

# NEW JERSEY DEPARTMENT OF ENVIRONMENTAL PROTECTION

**COMMISSIONER**  
BOB MARTIN

**CHIEF ADVISOR**  
RAY CANTOR

**DEPUTY COMMISSIONER**  
DAVID GLASS

**SPECIAL ASSISTANT TO THE COMMISSIONER**  
LOUIS VALENTE

**CHIEF OF STAFF**  
GOV'T LEGIS AFFAIRS  
MAGDALENA PADILLA

**SR POLICY ADVISORS**  
JOHN HUTCHISON  
JUDY JENGO

**DEPUTY ADVISOR**  
JANE ENGEL

**OFFICE OF ENV JUSTICE**  
RICHE OUTLAW

**OFFICE OF PERMIT COOR & ENV REVIEW**  
VACANT

**SPECIAL ASSISTANT TO THE COMMISSIONER FOR ENERGY AND THE ENVIRONMENT**  
BOB MARSHALL

**DEPUTY CHIEF OF STAFF & LEGISLATIVE LIAISON**  
JOHN GRAY

**BUDGET & FINANCIAL OPERATIONS**  
DIRECTOR  
ADRIENNE KREIPKE

**DEPUTY ADVISOR**  
RAYMOND PAPPERMAN

**LEGAL AFFAIRS**  
JANIS HOAGLAND

**INFO RES MGMT**  
PETER TENEBRUSO

**EMERGENCY MGT**  
ROBERT VAN FOSSEN

**COMMUNICATIONS DIRECTOR**  
ANGELENE TACCINI

**LOCAL GOVERNMENT ASST**  
CINDY RANDAZZO

**HUMAN RESOURCES**  
DIRECTOR  
ROBIN LIEBESKIND

**DISPUTE RESOLUTION**  
LINDA TAYLOR

**DIVISION OF SCIENCE, RESEARCH & ENV HEALTH**  
GARY BUCHANAN

**DEPUTY DIRECTOR COMMUNICATIONS**  
BOB BOSTOCK

**OFFICE OF RECORD ACCESS**  
MANAGER  
MATT COEFER

**OFFICE OF OCCUPATIONAL HEALTH & SAFETY**  
MANAGER  
AMAL SHAH

**ECONOMIC ANALYSIS**  
BEN WITHERELL

**PRESS OFFICE**  
BOB CONSIDINE

**GENERAL SERVICES & SYSTEMS COORDINATION**  
DIRECTOR  
JULIET DELVALLE

**CONSTITUENT RELATIONS**  
KERRY PFLUGH

**OFC OF EQUAL OPP & CONTRACT ASSISTANCE**  
DIRECTOR  
MELANIE ARMSTRONG

**NATURAL & HIST RESOURCES**  
ASST COMM  
RICHARD BOORNAZIAN

**LAND USE MANAGEMENT**  
ASST COMM  
VIRGINIA KOPKASH

**WATER RESOURCE MANAGEMENT**  
ASST COMM  
DANIEL KENNEDY

**AIR QUALITY, ENERGY, & SUSTAINABILITY**  
ASST COMM  
JOHN GIORDANO

**SITE REMEDIATION & WASTE MANAGEMENT PROGRAM**  
ASST COMM  
MARK PEDERSEN

**COMPLIANCE & ENFORCEMENT**  
ASST COMM  
RAY BUKOWSKI

**STATE PARK POLICE**  
DIRECTOR  
UNDER RECRUITMENT

**OFFICE OF COASTAL & LAND USE PLANNING**  
ELIZABETH SEMPLE

**DIV OF WATER SUPPLY & GEOSCIENCE**  
DIRECTOR  
VACANT

**DIV OF AIR QUALITY**  
DIRECTOR  
FRANK STEITZ

**DIV OF REMEDIATION MANAGEMENT**  
DIRECTOR  
KEN KLOO

**OFFICE OF STRATEGIC MGT**  
MARIA FRANCO-SPERA

**OFFICE OF HIST PRES**  
ADMINISTRATOR  
DANIEL SAUNDERS

**DIVISION OF LAND USE REGULATION**  
DIRECTOR  
DIANE DOW

**NEW JERSEY GEOLOGICAL SURVEY**  
STATE GEOLOGIST  
VACANT

**DIV OF ENERGY SECURITY & SUSTAINABILITY**  
DIRECTOR  
PAUL BALDAUF

**DIV OF ENF TECH & FINANCIAL SUPPORT**  
DIRECTOR  
ANTHONY FARRO

**AIR ENFORCEMENT**  
DIRECTOR  
RICHELLE WORMLEY

**DIV OF FISH & WILDLIFE**  
DIRECTOR  
DAVID CHANDA

**OFFICE OF POLICY IMPLEMENTATION & WATERSHED RESTORATION**  
VACANT

**DIV OF WATER QUALITY**  
DIRECTOR  
MICHELE PUTMAN

**SOLID & HAZARDOUS WASTE MANAGEMENT PROGRAM**  
DIRECTOR  
MARY JO AIELLO

**WATER & LAND USE ENF**  
DIRECTOR  
MARCEDIUS JAMESON

**DIV OF P&F STATE PARK SERVICE**  
DIRECTOR  
E. MARK TEXEL

**DIV OF WATER MONITORING & STANDARDS**  
DIRECTOR  
PATRICIA GARDNER

**DIV OF PESTICIDES, WASTE & UST ENFORCEMENT**  
DIRECTOR  
KNUTE JENSEN

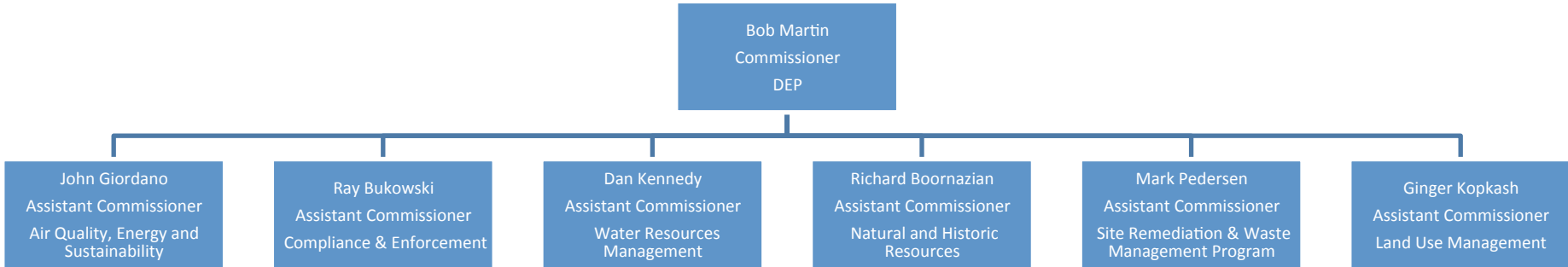
**DIV OF P&F STATE FORESTRY SERVICES**  
DIRECTOR  
LYNN FLEMING

**DIV OF OPS & COORDINATION**  
ACTING DIRECTOR  
COLLEEN KOKAS

**ENV SAFETY & QUALITY ASSURANCE**  
ASST DIR  
JOE AIELLO

**GREEN ACRES**  
INTERIM ADMINISTRATOR  
MARTHA SAPP

**OFFICE OF ENG & CONST**  
ADMINISTRATOR  
DAVID ROSENBLATT



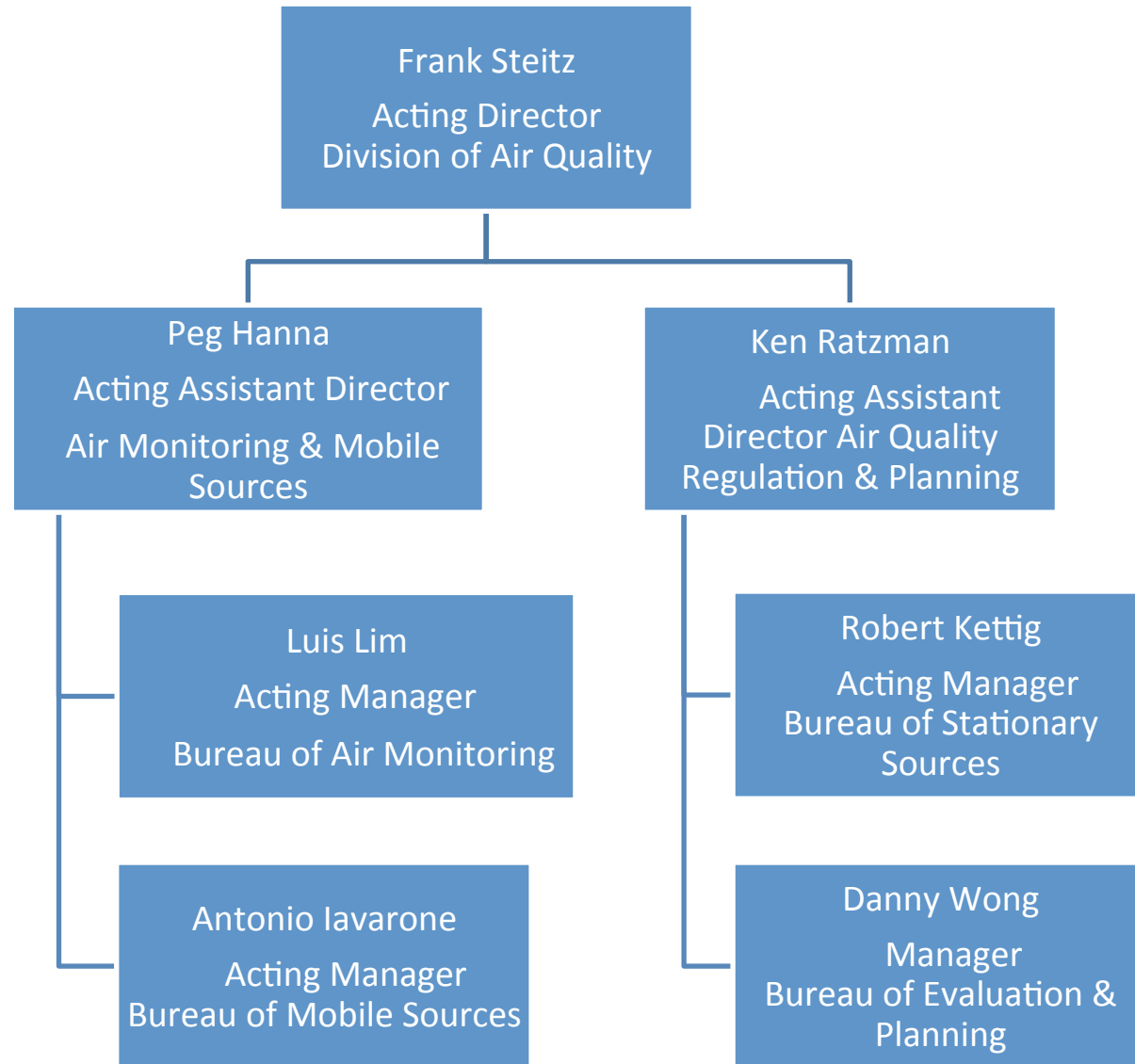
John Giordano  
Assistant Commissioner  
Air Quality, Energy and  
Sustainability

Paul Baldauf  
Director  
Division of Energy  
Security & Sustainability

Frank Steitz  
Acting Director  
Division of Air Quality

Bill O'Sullivan  
Office of Air & Energy  
Advisor

Ky Asral  
Manager Office  
of Operations &  
Coordination



Robert Kettig  
Acting Manager  
Bureau of Stationary  
Sources

```
graph TD; A["Robert Kettig  
Acting Manager  
Bureau of Stationary  
Sources"] --- B["Bachir Bouzid  
Section Chief  
Operating Permits"]; A --- C["Vacant  
Section Chief  
Preconstruction Permits"]
```

Bachir Bouzid  
Section Chief  
Operating Permits

Vacant  
Section Chief  
Preconstruction Permits

Danny Wong  
Manager  
Bureau of Evaluation &  
Planning

```
graph TD; A["Danny Wong  
Manager  
Bureau of Evaluation &  
Planning"] --- B["Sharon Davis  
Section Chief  
Air Quality Planning"]; A --- C["Joel Leon  
Section Chief  
Air Quality Evaluation"]
```

Sharon Davis  
Section Chief  
Air Quality Planning

Joel Leon  
Section Chief  
Air Quality Evaluation