

## FRIDAY BPW REAL ESTATE LISTINGS

Check out these for-sale properties in Benton Park West! Be sure to share this with friends, family, co-workers, or anyone interested in investing in our neighborhood. Thank you!

### SINGLE FAMILIES – PRIVATE LISTINGS



[3231 California Ave, 63118](#) 3 beds, 1 bath, 1,380 sq. ft. – Auction 02/28/2018



[3330 S. Compton Ave, 63118](#) 2 beds, 2 baths, 867 sq. ft. - \$139,900



[3331 Iowa Ave, 63118](#) 2 beds, 1 bath, 1,420 sq. ft. - \$69,900



[3433 Louisiana Ave, 63118](#) 1 bed, 1 bath, 796 sq. ft. - \$10,000



[3251 Michigan Ave, St. Louis, MO 63118](#) 4 beds, 2 baths, 1,408 sq. ft. 0 \$36,000



[3334 Michigan Ave, 63118](#) 3 beds, 2.5 baths, 1,784 sq. ft. - \$194,900



[3217 Potomac St, 63118](#) 2 beds, 1 bath, 874 sq. ft. - \$47,900 **NEW**



[3149 Ohio Ave, 63118](#) 2 beds, 1 bath, 907 sq. ft. - \$100,000



[3326 Oregon Ave, St. Louis, MO 63118](#) 2 beds, 1 bath, 3,254 sq. ft. - \$50,000



[2904 Texas Ave, 63118](#) 3 beds, 1 bath, 1,456 sq. ft. - \$115,000



[2909 Texas Ave, 63118](#) 3 beds, 3 baths, 1,828 sq. ft. - \$169,000



[3000 Texas Ave, 63118](#) 3 beds, 2 baths, 1,652 sq. ft. - \$117,000 **NEW**



[3148 Texas Ave, 63118](#) 3 beds, 2 baths, 1,824 sq. ft. - \$199,000



[3165 Texas Ave, 63118](#) 2 beds, 2 bath, 1,056 sq. ft. - \$50,000



[3215 Texas Ave, St. Louis, MO 63118](#) 2 beds, 2 baths, 1,994 sq. ft. - \$50,500



[3315 Texas Ave, St. Louis, MO 63118](#) 2 beds, ` bath, 950 sq. ft. - \$50,000



[3329 Texas Ave, 63118](#) 3 beds, 2 baths, 2,098 sq. ft. - \$185,000 **NEW**

**OPEN HOUSE: Sun, Feb 25 from 1-3 pm**



[3416 Virginia Ave, 63118](#) 2 beds, 1 bath, 816 sq. ft. - \$29,900

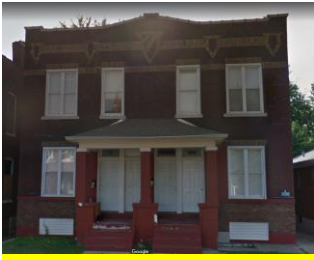


[2909 Wyoming St, 63118](#) 1 bed, 1 bath, 813 sq. ft. - \$34,000

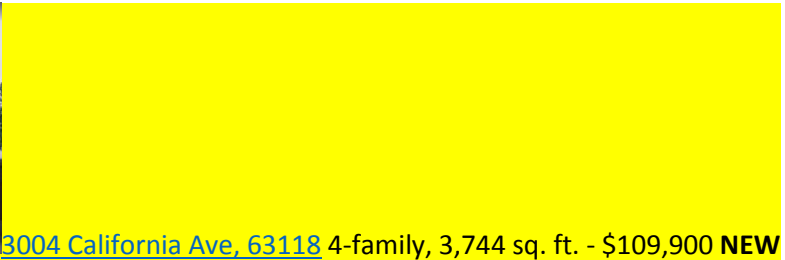
**MULTI-FAMILIES – PRIVATE LISTINGS**



[2704 Arsenal St, 63118](#) 3-family, 2,033 sq. ft. - \$159,000



[3004 California Ave, 63118](#) 4-family, 3,744 sq. ft. - \$109,900 **NEW**



[2911 Cherokee St, 63118](#) 4-family, 5,590 sq. ft. - \$294,900



[3133 Cherokee St, St. Louis, MO 63118](#) Mixed Use, 3,790 sq. ft. - \$115,000



[3424-3426 Cherokee St, 63118](#) Mixed Use, 10,040 sq. ft. - \$90,000



[2806-2808 Iowa Ave, St. Louis, MO 63118](#) 4-family, 3,600 sq. ft. - \$132,500



[3242 Nebraska Ave, 63118](#) 2-family, 2,808 sq. ft. - \$43,900



[3230 Oregon Ave, 63118](#) 2-family, 2,272 sq. ft. - \$46,000



[3233 Oregon Ave, 63118](#) 2-family, 2,430 sq. ft. - \$74,900



[3172 Pennsylvania Ave, 63118](#) 3-family, 1,800 sq. ft. - \$115,000



[2832 Texas Ave, 63118](#) 2-family, 1,938 sq. ft. - \$79,900



[2857 Texas Ave, St. Louis, MO 63118](#) 4-family, N/A sq. ft. - \$89,900



[3107 Wyoming St, St. Louis, MO 63118](#) 2-family, 2,090 sq. ft. - \$70,000

---

**SEVERAL CDA AND LRA PROPERTIES LISTED HERE ARE NOW OPTIONED. WE'RE TRYING TO GET A LIST FROM THE CITY. THANK YOU FOR YOUR PATIENCE AND UNDERSTANDING.**

#### **COMMUNITY DEVELOPMENT ADMINISTRATION (CDA) LISTINGS**

Visit the [CDA site](#) for information on purchasing. Those with **(NSP)** by the listing are a part of the Neighborhood Stabilization Program fund. Vacant lots not listed below.



[3417 Louisiana Ave](#) Single family, 816 sq. ft.



[3175 Oregon Ave](#) Half of 4-family conversion, 1,350 sq. ft. (OPTIONED)

## LAND REUTILIZATION AUTHORITY (LRA) LISTINGS

\*Most will be total gut rehabs; vacant lots not listed.



[2929 California Ave](#) Bed, bath, sq. ft. - \$1,500



[3135 California Ave](#) 4-family, 5370 sq. ft. - \$6,000 (OPTIONED)



[3302 California Ave](#) Mixed Use, 3354 sq. ft. – Appraisal Only



[2831 S. Jefferson Ave](#) Bed, bath, sq. ft. - \$1,500



[3324 Louisiana Ave](#) Single family, 2,028 sq. ft. - \$3,000



[3181 Minnesota Ave](#) 2-family, 1824 sq. ft. - \$2,500



[3209 Nebraska Ave](#) 4-family, 2,970 sq. ft. - \$6,000



[3229 Pennsylvania Ave](#) 2-family, 1320 sq. ft. - \$3,000



[2704 Utah Street](#) Mixed use, 3,500 sq. ft. – Appraisal Only



[2716 Utah Street](#) 2 Beds, 1 bath, 1,020 sq. ft. - \$1,500



[2746 Utah Street](#) 2-family, 1472 sq. ft. - \$1,500





[2750 Utah Street](#) Bed, bath, sq. ft. - \$3K



[3104 Wyoming Street](#) 2-family, 1,710 sq. ft. - \$3,000

On most Fridays, we'll post properties for-sale in our neighborhood. If you have a property you'd like featured, let us know.

Happy Hunting!

Benton Park West Neighborhood Association

[www.bentonparkwest.org](http://www.bentonparkwest.org)

**\*Listings are also posted on the BPWNA website and blog.**