

FRIDAY BPW REAL ESTATE LISTINGS

Check out these for-sale properties in Benton Park West! Be sure to share this with friends, family, co-workers, or anyone interested in investing in our neighborhood. Thank you!

FEATURED LISTING



LRA Property: [3214 Pennsylvania Ave](#) 4-family, 4,640 sq. ft. - \$6,000

SINGLE FAMILIES – PRIVATE LISTINGS



[3140 California Ave, St. Louis, MO 63118](#) 2 beds, 2.5 baths, 1,944 sq. ft. - \$167,500 **NEW**
Open House: Sunday, February 26 from 1-3 pm



[3238 California Ave, St. Louis, MO 63118](#) 2 beds, 1 bath, 1,472 sq. ft. - \$35,000



[3109 Cherokee St, St. Louis, MO 63118](#) 3 beds, 2 baths, 1,734 sq. ft. - \$110,000



[3258 S. Compton Ave, St. Louis, MO 63118](#) 3 beds, 2 baths, 1,100 sq. ft. - \$80,000



[3330 S. Compton Ave, St. Louis, MO 63118](#) 1 bed, 1 bath, 867 sq. ft. - \$45,000



[3425 S. Compton Ave, St. Louis, MO 63118](#) 3 beds, 1.5 baths, 1,598 sq. ft. - \$119,900



[3100 Block Iowa Ave, St. Louis, MO 63118](#) 3 beds, 3 baths, 1,774 sq. ft. - \$128,500



[3169 Iowa Ave, St. Louis, MO 63118](#) 3 beds, 1.5 baths, sq. ft. - \$134,900



[3147 S. Jefferson Ave, St. Louis, MO 63118](#) 4 beds, 3 baths, 3,158 sq. ft. - \$384,999



[3340 Michigan Ave, St. Louis, MO 63118](#) 2 beds, 1 bath, 835 sq. ft. - \$20,000



[3173 Nebraska Ave, St. Louis, MO 63118](#) 1 bed, 1 bath, 1,044 sq. ft. - \$90,000



[3317 Nebraska Ave, St. Louis, MO 63118](#) 1 bed, 1 bath, 714 sq. ft. - \$34,500



[3179 Ohio Ave, St. Louis, MO 63118](#) 2 beds, 2 baths, 1,652 sq. ft. - \$174,000



[3127 Oregon Ave, St. Louis, MO 63118](#) 3 beds, 2 bath, 2,158 sq. ft. - \$125,000



[3303 Potomac St, St. Louis, MO 63118](#) 3 beds, 2 baths, 990 sq. ft. - \$69,900



[TBD Texas Ave, St. Louis, MO 63118](#) 3 beds, 2 baths, 1,824 sq. ft. - \$75,000



[3340 Texas Ave, St. Louis, MO 63118](#) 2 beds, 3 baths, 2,034 sq. ft. - \$190,000



[2713 Utah St, St. Louis, MO 63118](#) 2 beds, 1 bath, 920 sq. ft. - \$29,900



[3011 Utah St, St. Louis, MO 63118](#) 2 beds, 1 bath, 1,100 sq. ft. - \$25,000



[2649 Wyoming St, St. Louis, MO 63118](#) 3 beds, 2.5 baths, 2,880 sq. ft. - \$250,000



[2825 Wyoming St, St. Louis, MO 63118](#) 3 beds, 2 baths, 1,424 sq. ft. - \$129,000



[3109 Wyoming St, St. Louis, MO 63118](#) 3 beds, 2 baths, 1,824 sq. ft. - \$74,900



[3110 Wyoming St, St. Louis, MO 63118](#) 1 bed, 1 bath, 820 sq. ft. - \$39,000

MULTI-FAMILIES – PRIVATE LISTINGS



[TBD, St. Louis, MO 63118](#) 4-family, 4,058 sq. ft. - \$139,900



[2844 California Ave, St. Louis, MO 63118](#) Mixed Use, 4,680 sq. ft. -\$259,000



[3001 California Ave, St. Louis, MO 63118](#) 2-family, 2,100 sq. ft. - \$59,000



[3133 Cherokee St, St. Louis, MO 63118](#) Mixed Use, 3,790 sq. ft. - \$135,000



[3404 Cherokee St, St. Louis, MO 63118](#) Multi-family, 2,822 sq. ft. - \$60,000



[3246 S Compton Ave, St. Louis, MO 63118](#) 4-family, 2,952 sq. ft. - \$33,000



[2824 Iowa Ave, St. Louis, MO 63118](#) 2-family, 2,066 sq. ft. - \$85,900



[2917 S. Jefferson Ave, St. Louis, MO 63118](#) Mixed Use, 4,557 sq. ft. - \$225,000



[3217 Michigan Ave, St. Louis, MO 63118](#) 2-family, 1,812 sq. ft. - \$39,900



[3306 Michigan Ave, St. Louis, MO 63118](#) 2-family, 1,532 sq. ft. - \$20,000



[3330 Michigan Ave, St. Louis, MO 63118](#) 2-family, 2,250 sq. ft. - \$74,000



[3230 Minnesota Ave, St. Louis, MO 63118](#) 4-family, N/A sq. ft. - \$160,000



[3246 Nebraska Ave, St. Louis, MO 63118](#) 4-family, 4,046 sq. ft. - \$139,000



[2800 Ohio Ave, St. Louis, MO 63118](#) Seven Properties Package - \$1,100,000



[3152 Oregon Ave, St. Louis, MO 63118](#) 3-family, 3,774 sq. ft. - \$134,900



[3226 Pennsylvania Ave, St. Louis, MO 63118](#) 2-family, N/A sq. ft. - \$39,900



[3217 Texas Ave, St. Louis, MO 63118](#) 4-family, 3,658 sq. ft. - \$18,000



[3118 Utah St, St. Louis, MO 63118](#) 2-family, 1,980 sq. ft. - \$58,000



[3218 Utah St, St. Louis, MO 63118](#) 2-family, 2,112 sq. ft. - \$74,900



[3338 Virginia Ave, St. Louis, MO 63118](#) 4 family, 3,536 sq. ft. \$ 127,750



[3341 Virginia Ave, St. Louis, MO 63118](#) 2-family, 2,014 sq. Ft. - \$89,750



[3108 Wyoming St, St. Louis, MO 63118](#) 2-family, 2,728 sq. ft. - \$60,000

COMMUNITY DEVELOPMENT ADMINISTRATION (CDA) LISTINGS

Visit the [CDA site](#) for information on purchasing. Those with **(NSP)** by the listing are a part of the Neighborhood Stabilization Program fund. Vacant lots not listed below.



[3417 Louisiana Ave](#) Single family, 816 sq. ft.



[3175 Oregon Ave](#) Half of 4-family conversion, 1,350 sq. ft.



[3147 Pennsylvania Ave](#) Mixed use, 1st floor 1,326 sq. ft. **(NSP)**



[3021 Texas Ave](#) Single family, 1,400 sq. ft. **(NSP)**

LAND REUTILIZATION AUTHORITY (LRA) LISTINGS

*Most will be total gut rehabs; vacant lots not listed.



[2929 California Ave](#) Bed, bath, sq. ft. - \$1,500



[3324 Louisiana Ave](#) Single family, 2,028 sq. ft. - \$3,000



[3135 California Ave](#) 4-family, 5370 sq. ft. - \$6,000



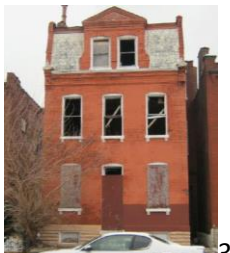
[3181 Minnesota Ave](#) 2-family, 1824 sq. ft. - \$2,500



[3302 California Ave](#) Mixed Use, 3354 sq. ft. - Appraisal Only



[3209 Nebraska Ave](#) 4-family, 2,970 sq. ft. - \$6,000



[3330 Iowa Ave](#) Bed, bath, square feet - \$1,500



[2839 Ohio Ave](#) 2-family, 4,614 sq. ft. - \$6,000



[2831 S. Jefferson Ave](#) Bed, bath, sq. ft. - \$1,500



[3214 Pennsylvania Ave](#) 4-family, 4,640 sq. ft. - \$6,000



[3229 Pennsylvania Ave](#) 2-family, 1320 sq. ft. - \$3,000



2908 Texas Ave Single family,
1,356 sq. ft. - \$6,000



2746 Utah Street 2-family,
1472 sq. ft. - \$1,500



2704 Utah Street Mixed use,
3,500 sq. ft. – Appraisal Only



2750 Utah Street Bed, bath,
sq. ft. - \$3K



2716 Utah Street 2 Beds, 1
bath, 1,020 sq. ft. - \$1,500



3104 Wyoming Street 2-
family, 1,710 sq. ft. - \$3,000

On most Fridays, we'll post properties for-sale in our neighborhood. If you have a property you'd like featured, let us know.

Happy Hunting!

Benton Park West Neighborhood Association
www.bentonparkwest.org

***Listings are also posted on the BPWNA website and blog.**