

FRIDAY BPW REAL ESTATE LISTINGS

Check out these for-sale properties in Benton Park West! Be sure to share this with friends, family, co-workers, or anyone interested in investing in our neighborhood. Thank you!

SINGLE FAMILIES – PRIVATE LISTINGS



[3221 California Ave, 63118](#) 5 beds, 3.5 baths, 3,720 sq. ft. - \$299,000



[3224 S Compton Ave, 63118](#) 2 beds, 1 bath, 960 sq. ft. - \$25,000 (Pending)



[3433 S. Compton Ave, 63118](#) 1 bed, 1 bath, 864 sq. ft. - \$65,000 **NEW**



[3015 Iowa Ave, 63118](#) 1 bed, 1 bath, sq. ft. - \$88,000



[3176 Nebraska Ave, 63118](#) 2 beds, 1.5 baths, 1,172 sq. ft. - \$75,000 (Contingent)



[3149 Ohio Ave, 63118](#) 2 beds, 1 bath, 907 sq. ft. - \$90,000 (Contingent)



[2904 Texas Ave, 63118](#) 3 beds, 1 bath, 1,456 sq. ft. - \$110,000



[2909 Texas Ave, 63118](#) 3 beds, 3 baths, 1,828 sq. ft. - \$169,000



[3011 Texas Ave, 63118](#) 3 beds, 2baths, 1,512 sq. ft. \$109,900



[3134 Texas Ave, 63118](#) 3 beds, 2.5 baths, 1,600 sq. ft. - \$219,000 (Contingent)



[3165 Texas Ave, 63118](#) 2 beds, 2 bath, 1,056 sq. ft. - \$25,000



[3315 Texas Ave, St. Louis, MO 63118](#) 2 beds, ` bath, 950 sq. ft. - \$50,000 (Pending)



[3424 Virginia Ave, 63118](#) 3 beds, 2.5 baths, 1,820 sq. ft. - \$199,900 (Contingent)



[3426 Virginia Ave, 63118](#) 3 beds, 2.5 baths, 1,820 sq. ft. - \$199,900 (Contingent)



[2641 Wyoming St, 63118](#) 3 beds, 2.5 baths, 2,591 sq. ft. - \$210,000 **NEW**

Open House: Sunday, April 22 at 1-3 pm



[2647 Wyoming St, 63118](#) 3 beds, 2.5 baths, 2,432 sq. ft. - \$249,900 (Contingent)

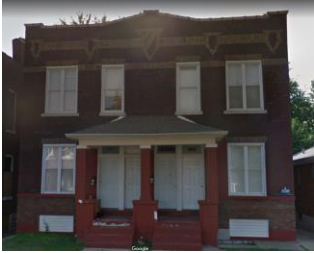
MULTI-FAMILIES – PRIVATE LISTINGS



[2755 Arsenal St, 63118](#) 2-family, N/A sq. ft. - \$62,000 **NEW** (Foreclosure)



[2704 Arsenal St, 63118](#) 3-family, 2,033 sq. ft. - \$159,000



[3004 California Ave, 63118](#) 4-family, 3,744 sq. ft. - \$109,900 (Pending)



[3424-3426 Cherokee St, 63118](#) Mixed Use, 10,040 sq. ft. - \$90,000 (Pending)



[2806-2808 Iowa Ave, St. Louis, MO 63118](#) 4-family, 3,600 sq. ft. - \$132,500



[3020 Iowa Ave, 63118](#) 4-family, 3,216 sq. ft. - \$29,900



[3343 Louisiana Ave, 63118](#) 2-family, 1,500 sq. ft. - \$29,900 (Pending)



[3161 Oregon Ave, 63118](#) 4-family, 2,706 sq. ft. - \$79,900



[3172 Pennsylvania Ave, 63118](#) 3-family, 1,800 sq. ft. - \$115,000



[3236 Pennsylvania Ave, 63118](#) 2-family, 2,156 sq. ft. - \$64,900 **NEW**



[2832 Texas Ave, 63118](#) 2-family, 1,938 sq. ft. - \$79,900



[3307 Texas Ave, 63118](#) 2-family, 2,204 sq. ft. - \$179,000



[2639 Wyoming St, 63118](#) 1,899 sq. ft. - \$74,900



[3107 Wyoming St, St. Louis, MO 63118](#) 2-family, 2,090 sq. ft. - \$70,000

SEVERAL CDA AND LRA PROPERTIES LISTED HERE ARE NOW OPTIONED. WE'RE TRYING TO GET A LIST FROM THE CITY. THANK YOU FOR YOUR PATIENCE AND UNDERSTANDING.

COMMUNITY DEVELOPMENT ADMINISTRATION (CDA) LISTINGS

Visit the [CDA site](#) for information on purchasing. Those with **(NSP)** by the listing are a part of the Neighborhood Stabilization Program fund. Vacant lots not listed below.



[3417 Louisiana Ave](#) Single family, 816 sq. ft.



[3175 Oregon Ave](#) Half of 4-family conversion, 1,350 sq. ft. (OPTIONED)

LAND REUTILIZATION AUTHORITY (LRA) LISTINGS

*Most will be total gut rehabs; vacant lots not listed.



[2929 California Ave](#) Bed, bath, sq. ft. - \$1,500



[3135 California Ave](#) 4-family, 5370 sq. ft. - \$6,000 (OPTIONED)



[2831 S. Jefferson Ave](#) Bed, bath, sq. ft. - \$1,500



[3324 Louisiana Ave](#) Single family, 2,028 sq. ft. - \$3,000



[3181 Minnesota Ave](#) 2-family, 1824 sq. ft. - \$2,500



[3209 Nebraska Ave](#) 4-family, 2,970 sq. ft. - \$6,000



[3229 Pennsylvania Ave](#) 2-family, 1320 sq. ft. - \$3,000



[3104 Wyoming Street](#) 2-family, 1,710 sq. ft. - \$3,000

On most Fridays, we'll post properties for-sale in our neighborhood. If you have a property you'd like featured, let us know.

Happy Hunting!

Benton Park West Neighborhood Association

www.bentonparkwest.org

***Listings are also posted on the BPWNA website and blog.**