

FRIDAY BPW REAL ESTATE LISTINGS

Check out these for-sale properties in Benton Park West! Be sure to share this with friends, family, co-workers, or anyone interested in investing in our neighborhood. Thank you!

FEATURED LISTING



LRA Property: [3214 Pennsylvania Ave](#) 4-family, 4,640 sq. ft. - \$6,000

SINGLE FAMILIES – PRIVATE LISTINGS



[2617 Arsenal St, St. Louis, MO 63118](#) 2 beds, 1.5 baths, 1,730 sq. ft. - \$130,900



[3009 California Ave, St. Louis, MO 63118](#) 2 beds, 1 bath, 774 sq. ft. - \$56,900



[3443 Louisiana Ave, St. Louis, MO 63118](#) 3 beds, 2 baths, 1,776 sq. ft. - \$75,000



[3340 Michigan Ave, St. Louis, MO 63118](#) 2 beds, 1 bath, 835 sq. ft. - \$20,000



[3333 Minnesota Ave, St. Louis, MO 63118](#) 4 beds, 2 baths, 1,700 sq. ft. - \$55,000



[3162 Nebraska Ave, St. Louis, MO 63118](#) 3 beds, 2 baths, 2,650 sq. ft. - \$173,900



[3167 Nebraska Ave, St. Louis, MO 63118](#) 1 bed, 1 bath, 1,056 sq. ft. - \$23,500



[3173 Nebraska Ave, St. Louis, MO 63118](#) 1 bed, 1 bath, 1,044 sq. ft. - \$90,000



[3129 Ohio Ave, St. Louis, MO 63118](#) 3 beds, 2.5 baths, 2,358 sq. ft. - \$189,000

Open House: Sun, July 2 from 1:00-3:00 pm



[3133 Oregon Ave, St. Louis, MO 63118](#) 3 beds, 1.5 baths, 1,800 sq. ft. - \$145,000



[2922 Texas Ave, St. Louis, MO 63118](#) 2 beds, 2.5 baths, 2,570 sq. ft. - \$189,900



[3215 Texas Ave, St. Louis, MO 63118](#) 2 beds, 2 baths, 1,994 sq. ft. - \$79,500



[3243 Texas Ave, St. Louis, MO 63118](#) 2 beds, 2 baths, 731 sq. ft. - \$89,000



[3329 Texas Ave, St. Louis, MO 63118](#) 4 beds, 2 baths, 2,098 sq. ft. - \$63,000



[2713 Utah St, St. Louis, MO 63118](#) 1 bed, 1 bath, 920 sq. ft. - \$24,900



[3011 Utah St, St. Louis, MO 63118](#) 2 beds, 1 bath, 1,100 sq. ft. - \$20,000



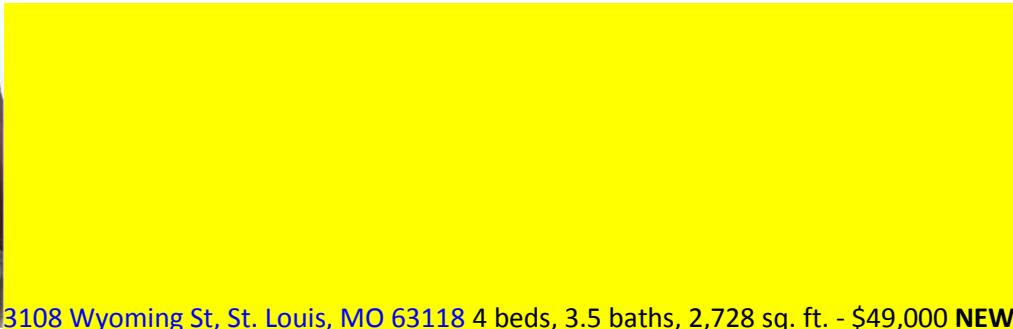
[2807 Wyoming St, St. Louis, MO 63118](#) 2 beds, 2 bath, 1,292 sq. ft. - \$119,900



[2839 Wyoming St, St. Louis, MO 63118](#) 2 beds, 1.5 baths, 1,152 sq. ft. - \$119,000



[3108 Wyoming St, St. Louis, MO 63118](#) 4 beds, 3.5 baths, 2,728 sq. ft. - \$49,000 **NEW**



[3109 Wyoming St, St. Louis, MO 63118](#) 3 beds, 2 baths, 1,824 sq. ft. - \$74,900

MULTI-FAMILIES – PRIVATE LISTINGS



[3001 California Ave, St. Louis, MO 63118](#) 2-family, 2,100 sq. ft. - \$39,900



[2917 Cherokee St, St. Louis, MO 63118](#) 2-family, N/A sq. ft. - \$53,000



[3133 Cherokee St, St. Louis, MO 63118](#) Mixed Use, 3,790 sq. ft. - \$120,000



[2824 Iowa Ave, St. Louis, MO 63118](#) 2-family 2,066 sq. ft. - \$79,900



[3306 Louisianan Ave, St. Louis, MO 63118](#) 4-family, 3,196 sq. ft. - \$99,500



[3230 Michigan Ave, St. Louis, MO 63118](#) 2-family, 2,310 sq. ft. - \$69,000



[3301 Minnesota Ave, St. Louis, MO 63118](#) Mixed Use, N/A sq. ft. - \$65,000



[2800 Ohio Ave, St. Louis, MO 63118](#) Seven Properties Package - \$949,000



[2857 Texas Ave, St. Louis, MO 63118](#) 4-family, N/A sq. ft. - \$92,500



[3118 Utah St, St. Louis, MO 63118](#) 2-family, 1,980 sq. ft. - \$58,000



[3437 Virginia Ave, St. Louis, MO 63118](#) 2-family, 2727 sq. ft. - \$90,000



[2900 Wyoming St, St. Louis, MO 63118](#) 4-family, 2,970 sq. ft. - \$110,000

COMMUNITY DEVELOPMENT ADMINISTRATION (CDA) LISTINGS

Visit the [CDA site](#) for information on purchasing. Those with **(NSP)** by the listing are a part of the Neighborhood Stabilization Program fund. Vacant lots not listed below.



[3417 Louisiana Ave](#) Single family, 816 sq. ft.



[3175 Oregon Ave](#) Half of 4-family conversion, 1,350 sq. ft.



[3147 Pennsylvania Ave](#) Mixed use, 1st floor 1,326 sq. ft. **(NSP)**



[3021 Texas Ave](#) Single family, 1,400 sq. ft. **(NSP)**

LAND REUTILIZATION AUTHORITY (LRA) LISTINGS

*Most will be total gut rehabs; vacant lots not listed.



[2929 California Ave](#) Bed, bath, sq. ft. - \$1,500



[3324 Louisiana Ave](#) Single family, 2,028 sq. ft. - \$3,000



[3135 California Ave](#) 4-family, 5370 sq. ft. - \$6,000



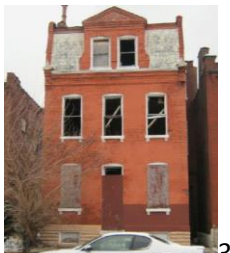
[3181 Minnesota Ave](#) 2-family, 1824 sq. ft. - \$2,500



[3302 California Ave](#) Mixed Use, 3354 sq. ft. - Appraisal Only



[3209 Nebraska Ave](#) 4-family, 2,970 sq. ft. - \$6,000



[3330 Iowa Ave](#) Bed, bath, square feet - \$1,500



[2839 Ohio Ave](#) 2-family, 4,614 sq. ft. - \$6,000



[2831 S. Jefferson Ave](#) Bed, bath, sq. ft. - \$1,500



[3214 Pennsylvania Ave](#) 4-family, 4,640 sq. ft. - \$6,000



[3229 Pennsylvania Ave](#) 2-family, 1320 sq. ft. - \$3,000



2908 Texas Ave Single family,
1,356 sq. ft. - \$6,000



2746 Utah Street 2-family,
1472 sq. ft. - \$1,500



2704 Utah Street Mixed use,
3,500 sq. ft. – Appraisal Only



2750 Utah Street Bed, bath,
sq. ft. - \$3K



2716 Utah Street 2 Beds, 1
bath, 1,020 sq. ft. - \$1,500



3104 Wyoming Street 2-
family, 1,710 sq. ft. - \$3,000

On most Fridays, we'll post properties for-sale in our neighborhood. If you have a property you'd like featured, let us know.

Happy Hunting!

Benton Park West Neighborhood Association
www.bentonparkwest.org

***Listings are also posted on the BPWNA website and blog.**