

## Operating a TRF Receiver

Welcome to the world of real radio! Your TRF receiver works on principles developed during the last century that took radio from the Stone Age into more modern times. Those same principles apply even today and your receiver should produce excellent results but you will need to operate the receiver. Note carefully the following tips about using it.

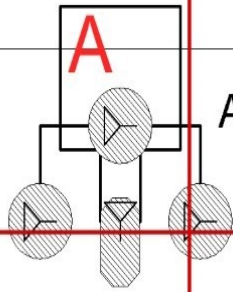
The controls are Volume, Main Tuning, Fine Tuning, Regeneration and, most important of all, the Attenuator.

- First try and get your receiver to go in and out of regeneration. This should be a soft rushing noise as the control is increased. Set the control just below the point of regeneration for AM and just above for SSB and CW. If you increase it too far the selectivity decreases and the gain of the receiver drops.
- Keep the Attenuator setting as low as possible and rely on the Volume control to give gain adjustment.
- Note: TRF receivers are **EASILY OVERLOADED**. You just need a short wire or whip antenna. Connecting your main station aerial will overload the poor thing. When in doubt turn the attenuator towards the minimum setting.
- Set the main tuning control (VC1) to the portion of the band you wish to listen to and then use Fine Tuning to tune around.
- Note: All controls interact. You will probably find it easier to have one hand on a tuning control, and the other on the Regeneration control most of the time. You will also have to adjust the Attenuator from time to time but all this is half the fun of such a simple receiver.

When you have mastered using this little receiver you will have a nice little device for monitoring the band and brushing up your CW. You can then call yourself a real amateur radio operator.

G3vtt 20/10/15

0



Antenna

B



10n

C

D

E



10u

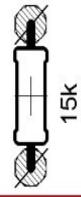
10n

75L08

100n

1

Fine Tune REGEN

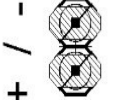


15k

Design: G3RJV  
PCB: M0XPD



100u



Power



3

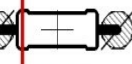
10n



1M



10n



10k

10p



2k



33p



270



4k7



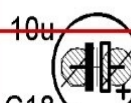
2N3819



10n



10u



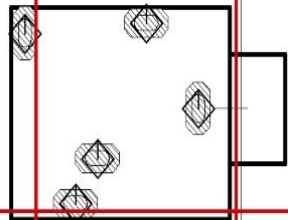
10u

22

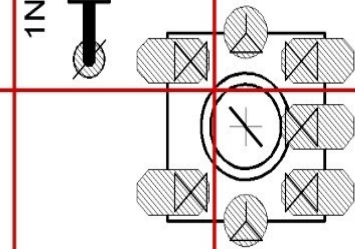


100u

PHONES



4



Atten



47k



330p



2N3904



100n



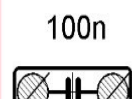
27k

R9

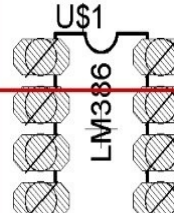
G9



10n



C11



US1

LM386

100n

1503\_09

10



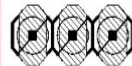
100u

5



TUNE

VOL



KANGA PRODUCTS