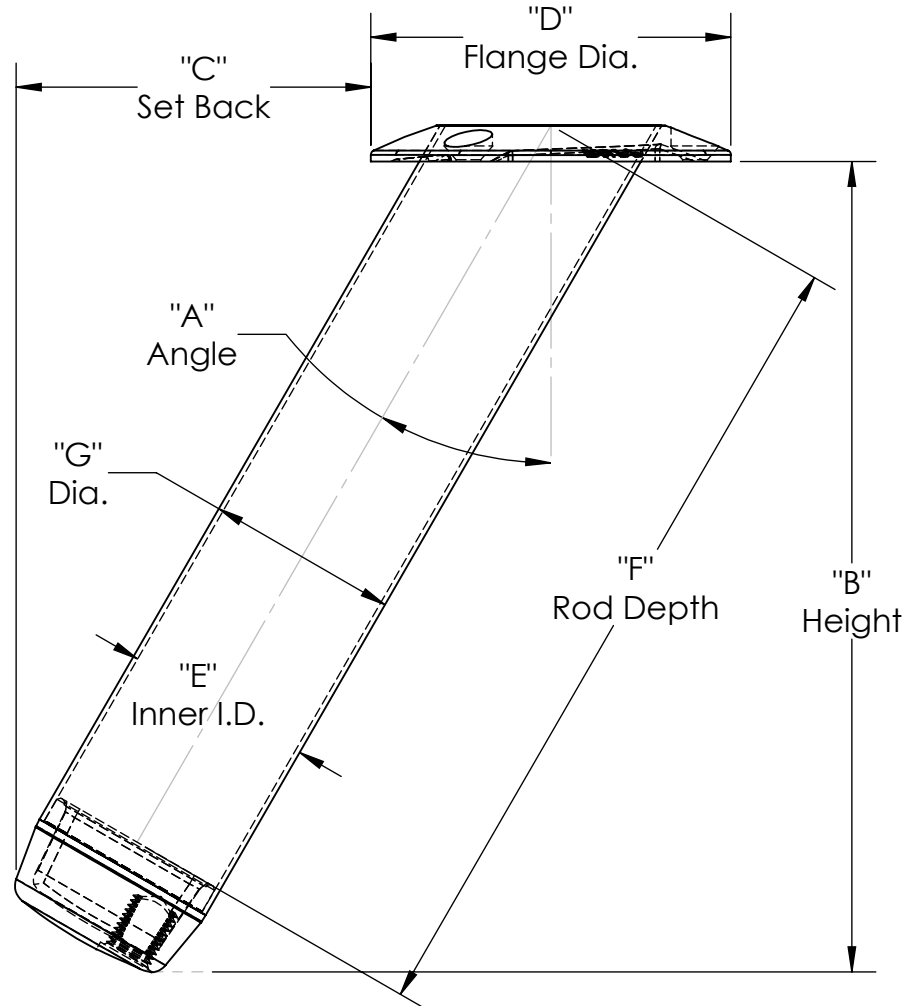


Part Num	Type	Type	"A" Angle	"B" Height	"C" Set Back	"D" Flange O.D.	"E" Liner I.D.	"F" Rod Depth	"G" Dia.
CA-0005	Chrome	STD	0°	9.50"	0"	3.75"	1.625"	8.75"	2.00"
CA-0004-15	Chrome	STD	15°	9.50"	1.50"	3.75"	1.625"	9.00"	2.00"
CA-0004	Chrome	STD	30°	8.75"	3.75"	3.75"	1.625"	8.625"	2.00"
CA-0008	Chrome	Large	30°	9.75"	4.37"	4.00"	1.875"	10.00"	2.25"
CA-0122	Chrome-Revolver	Large	30°	9.75"	4.37"	4.00"	1.875"	9.625"	2.25"
CA-0123	Chrome-Revolver	STD	30°	9.75"	3.75"	3.75"	1.625"	8.25"	2.00"
CA-0127	Chrome-Revolver	STD	0°	9.53"	0"	3.75"	1.625"	8.375"	2.00"
CA-0128	Chrome-Revolver	STD	15°	9.61"	1.50"	3.75"	1.625"	8.625"	2.00"
CA-0071	Stainless	SS	30°	9.00"	3.75"	4.00"	1.750"	9.75"	2.125"




Rupp Marine Inc
 Serious Sportfishing Hardware
 (772)286-5300 (866)477-2678

Rod Holder Table