

Trails of the Poestenkill Community Forest

■ Moose Trail (Yellow) 0.66 mi

Leaving from Legenbauer Rd. and crossing a stream, you'll find yourself on an old logging road with stone walls within view. The trail continues through the forest to a short wetland "look-out" trail on your left (**site of recent moose sightings**) just before you hop stones across a small creek and climb slightly to Sugar Rock Road,* where you'll find a lovely collection of old stone walls. Take a right to continue for a short distance on this historic road. *Sugar Rock Road is named for a very large rock that you can see just off Plank Rd. at a sharp turn.

■ Sap House Trail (Red) 0.81 mi

Sap House trail makes a "C" off Moose Trail and brings you by the site of the Old Catlin Sap House. You can see some of the remnants on the forest floor.

□ Hemlock Swamp Trail (White) 0.41 mi

Leaves from the turn around on Legenbauer Rd. and winds through a hemlock forest with small wetlands on either side. From Hemlock Swamp Trail you can access the Ridge Trail and Big Beaver Bog Trail.

■ Ridge Trail (Orange) 0.42 mi

Runs up to a ridge via switchbacks crossing Legenbauer Rd. A fun trail for a work out — combine with other trails to make a 5 k run.

■ Big Beaver Bog Trail (Blue) 0.49 mi

Starts from the Hemlock Swamp Trail and moves up a small hill to a lovely overlook of the wetland. **Great birding opportunities.** There is a short spur trail that gets you closer to the edge of the wetland. Continue along the ridge for a short distance and then down to the creek. **Use caution across the old beaver dam.** This trail will eventually bring you back to Sugar Rock Road and the Moose Trail.

■ Gravel Ridge Road (Orange/XX marks) 0.48 mi

The main corridor road into the southern section.

Poestenkill Community Forest Rules

- Open Dawn to Dusk (camping and night time use prohibited except by special arrangement)
- No Recreational ATV use
- Carry In - Carry Out
- Hunting by Permit Only (visit www.renpa.org/hunt)
- Use Caution during hunting season (always wear hunter orange).
- Please respect private property. Stay within the bounds of the Community Forest.
- Dogs must be kept under control.
- Park only in designated parking

Join us!

The Rensselaer Plateau Alliance is a not-for-profit 501(c)(3) organization that depends on volunteers and member support.

Learn more:
www.renselaerplateaualliance.org
518-712-9211
Rensselaer Plateau Alliance, Inc.
PO Box 790

Trails of the Poestenkill Community Forest

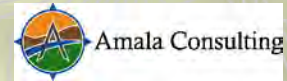
200 Legenbauer Rd
Averill Park, NY 12018



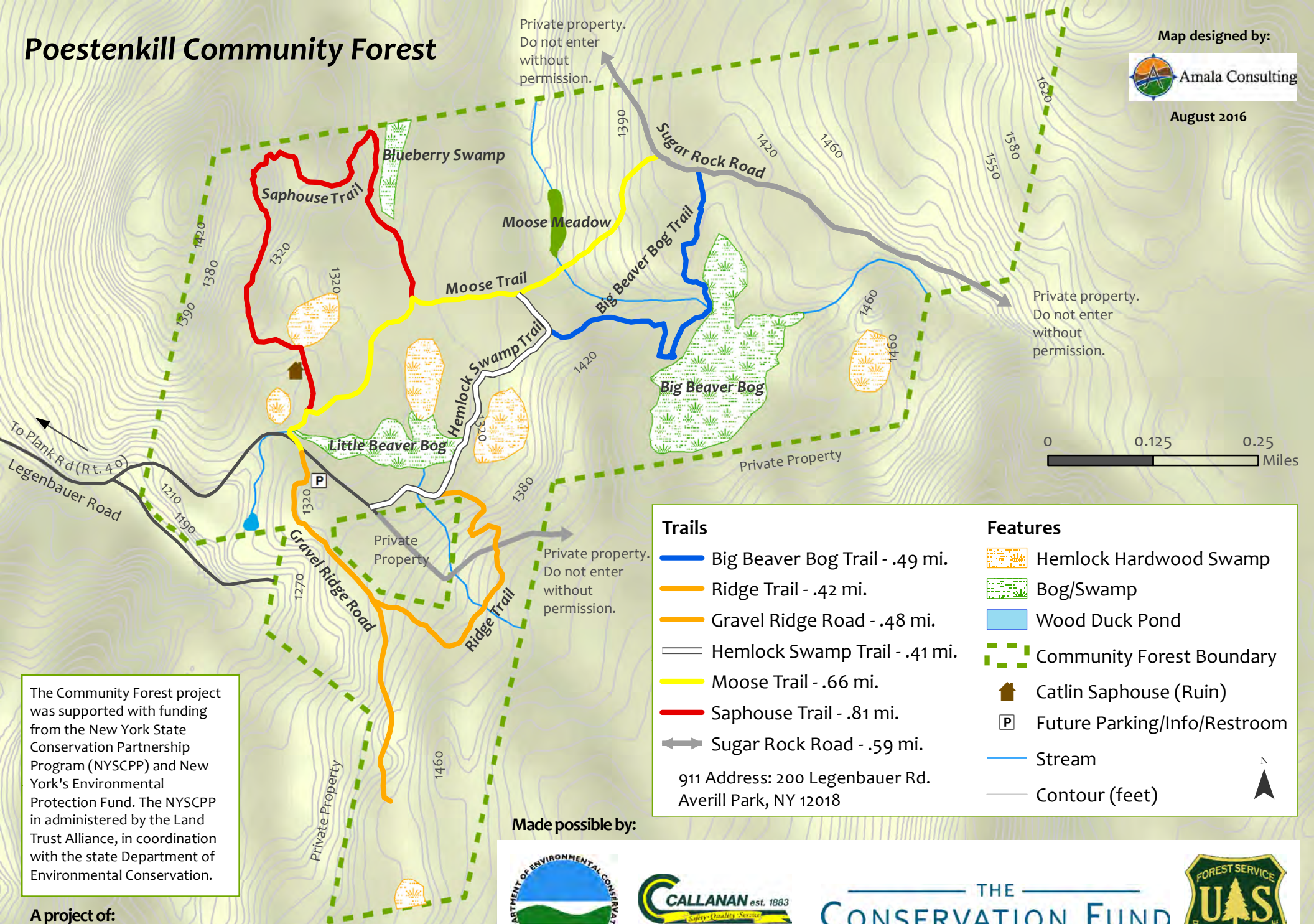
The Community Forest and the development of this map was supported with funding from the New York State Conservation Partnership Program (NYSCPP) and New York's Environmental Protection Fund. The NYSCPP is administered by the Land Trust Alliance, in coordination with the state Department of Environmental Conservation. Support also came from the U.S. Forest Service's Community Forest Program and from members of the Rensselaer Plateau Alliance.

Poestenkill Community Forest

Map designed by:



August 2016



Private property.
Do not enter
without
permission.

Private property.
Do not enter
without
permission.

Trails

- Big Beaver Bog Trail - .49 mi.
- Ridge Trail - .42 mi.
- Gravel Ridge Road - .48 mi.
- Hemlock Swamp Trail - .41 mi.
- Moose Trail - .66 mi.
- Saphouse Trail - .81 mi.
- Sugar Rock Road - .59 mi.

911 Address: 200 Legenbauer Rd.
Averill Park, NY 12018

Features

- Hemlock Hardwood Swamp
- Bog/Swamp
- Wood Duck Pond
- Community Forest Boundary
- Catlin Saphouse (Ruin)
- Future Parking/Info/Restroom
- Stream
- Contour (feet)

Made possible by:

The Community Forest project was supported with funding from the New York State Conservation Partnership Program (NYSCPP) and New York's Environmental Protection Fund. The NYSCPP is administered by the Land Trust Alliance, in coordination with the state Department of Environmental Conservation.

A project of:

Conservation Through Community

Community Forest managed by a committee of community members



www.renselaerplateau.org info@renselaerplateau.org