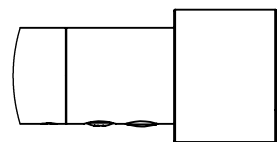
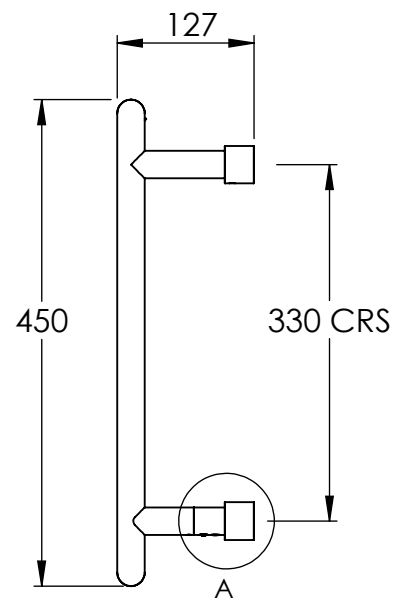
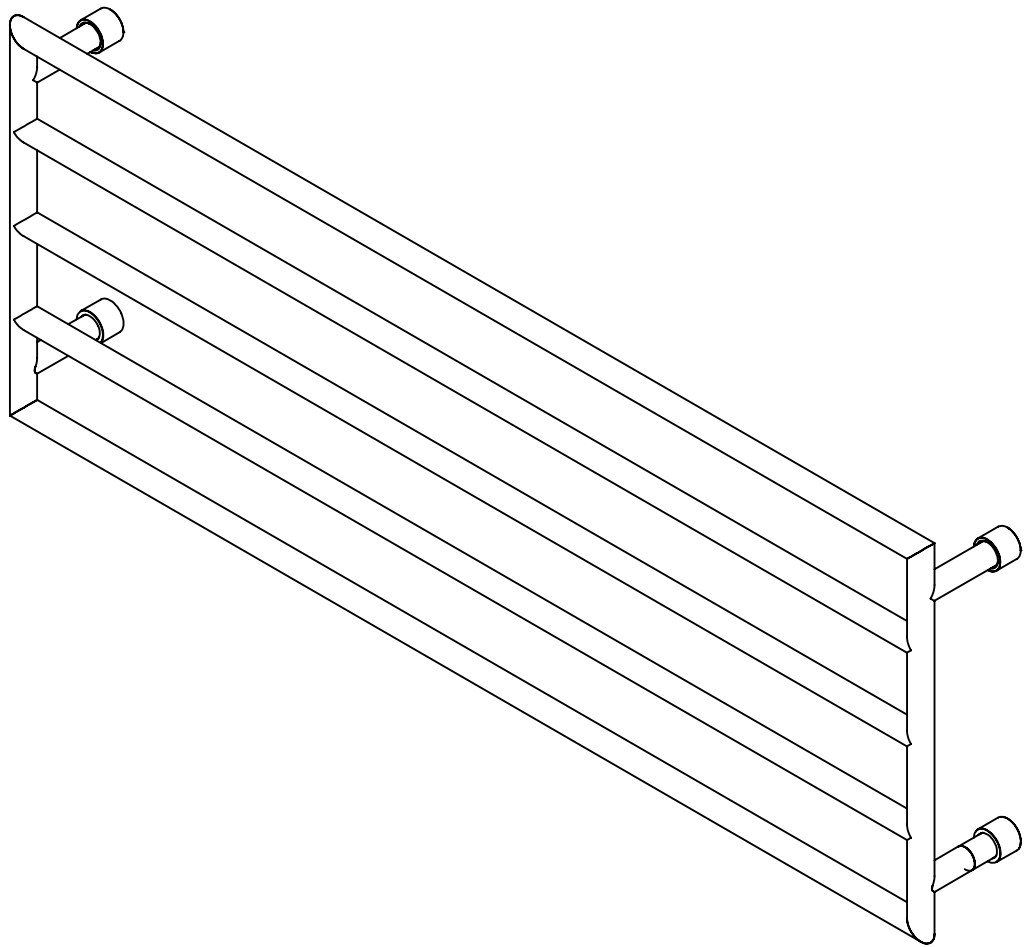
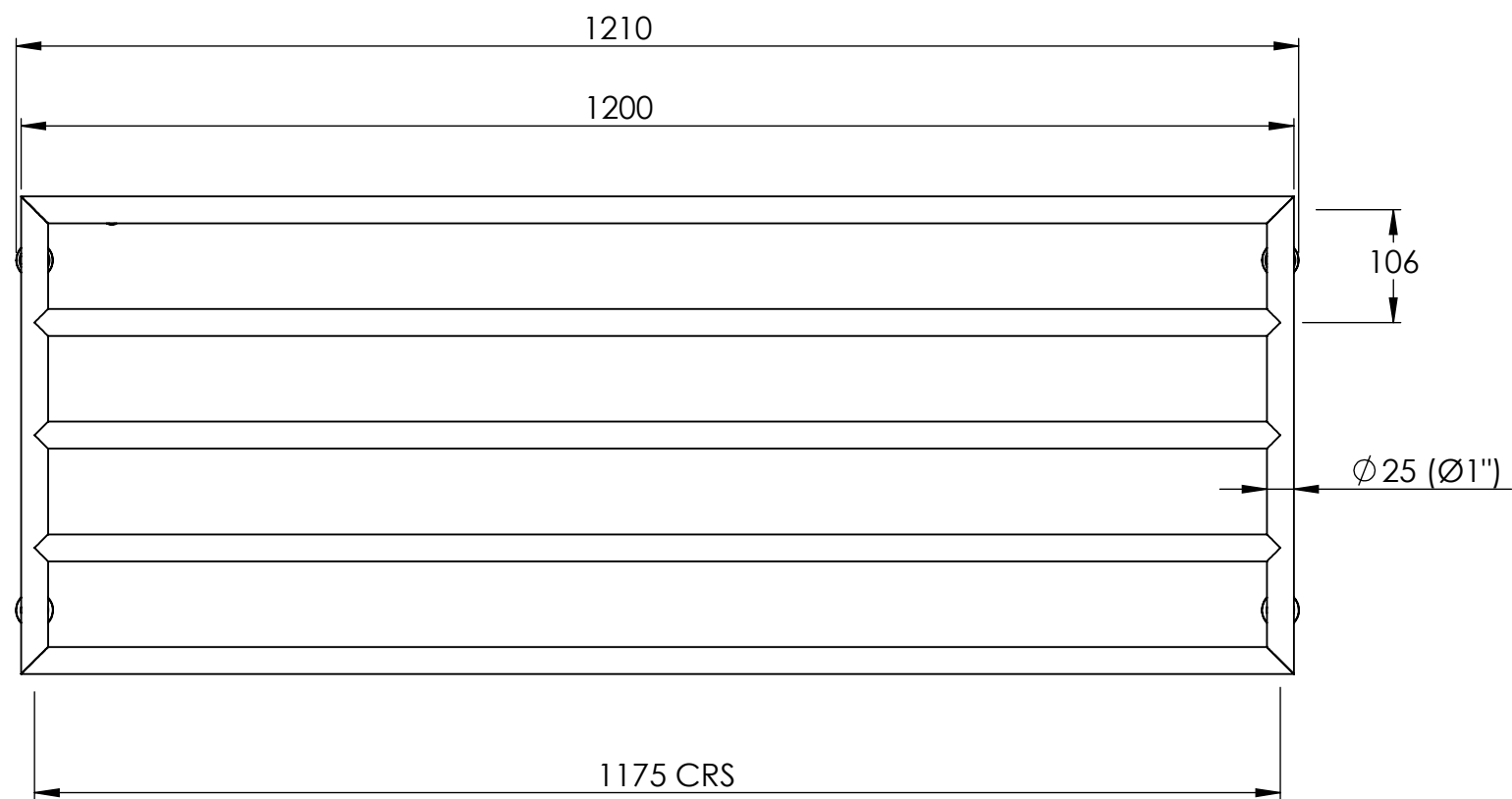





BARD & BRAZIER



DETAIL A
SCALE 1 : 2

PATENTED INTEGRATED VALVES
INSTALLED ON LOWER WALL RETURNS

DO NOT SCALE DRAWING ALL DIMENSIONS ARE IN MILLIMETERS AND MAY VARY $\pm 5\text{mm}$ AS THEY ARE HANDMADE, HAND SOLDERED AND POLISHED
WE THEREFORE RECOMMEND THAT ANY INSTALLATION WORK BE CARRIED OUT UPON RECEIPT OF RAIL.

BTU/HR AT DELTA 60: 1310 CONNECTIONS: 15mm COMPRESSION	TEST PRESSURE: 6 BAR MAX WORKING PRESSURE: 3 BAR MAX WORKING TEMPERATURE: 100°C HEAT OUTPUT DETERMINED IN ACCORDANCE WITH EN 442	
	TITLE: D-RAIL 5 BAR TOWEL WARMER 450 x 1200mm - HYDRONIC	
BARD & BRAZIER LIMITED MARSTON ROAD WOLVERHAMPTON WEST MIDLANDS WV2 4LX UK T: +44 (0) 121 270 2222 E: INFO@BARDBRAZIER.CO.UK WWW.BARDBRAZIER.CO.UK BARD & BRAZIER RAILS ARE MADE IN ENGLAND FROM HIGH QUALITY BRASS AND CAN BE USED ON OPEN OR CLOSED CIRCUITS	 BARD & BRAZIER	SCALE: 1:7 DATE: 16/04/2018 PRODUCT CODE: DRW45-120