

2017



AGROBS[®]

The Alpine Foothills
in a Bag!
www.agrobs.de

Contents

- 4+ Welcome to AGROBS – We introduce ourselves
- 18 **PRE ALPIN®** Wiesencobs® – The Original for all Horses
- 20 **PRE ALPIN®** Wiesenflakes – Newly Defined Structure – Roughage in Form of Flakes
- 22 **PRE ALPIN®** Protein Light Flakes – Low-Protein Roughage in Form of Flakes
- 24 **PRE ALPIN®** Senior – Basic Feed up to the Old Age
- 28 **PRE ALPIN®** Aspero – The Special Structure
- 30 Alpen Heu – The Basis of Every Diet
- 32 **PRE ALPIN®** Compact – The Alpine Foothills in Brick Form
- 36 AlpenGrün Müsli – Considerate of Naturalness
- 38 AlpenGrün Mash – And Everything is All Right
- 40 LeichtGenuss – Fibre-Light Feed to Keep Horses Occupied
- 44 HaferWiese - Struktur müsli – With Black and White Oats
- 46 Kraftpaket – The Strength of the Complete Plant for Energy and Performance
- 48 Maiscobs – From the Complete Plant
- 50 Grünhafer – Oats in a Different Way...
- 54 Luzerne+ – Structured Feed with the Special Plus
- 56 Luzernecobs – Traditional Horse Feed
- 58 **Horse Alpin®** – Working Horses Need Strength
- 60 **Horse Alpin®** Senior – Complete Provision for Aged Horses
- 62 Stroh – High-Quality Feeding Straw for all Animals
- 66 Saatgut – Biodiversity of the Alpine Foothills
- 68 Naturmineral – The Natural Supply with Minerals
- 70 Weidemineral Cobs – Well Supplied During Grazing Season
- 72 Senioremineral – All Round Well Supplied
- 76 Selen pur – Specifically for Balancing a Selenium Deficiency
- 77 Zink pur – Specific Zinc Supply
- 78 Spurenelemente Pur – Specifically for Balancing a Trace Element Deficiency
- 79 Bavaria Steinsalz – For a Balanced Supply with Electrolytes
- 80 WiesenBussi – The Healthy Treat
- 82 Feeding Advice – Let our team of experts advise you



Contents



AGROBS®

For generations we have dealt in crude fibre products. The foundation of our company is built on the experience of our ancestors concerning traditional farming. Especially our father, Jakob Berger, was inspired by the unique diversity of the grasses and herbs of the Bavarian Alpine foothills. He made this passion to his job – and passed it on.

In 1993, Jakob Berger founded the company AGROBS and, since then, was devoted intensively to development of natural and health-enhancing crude fibre products.

Since 2007, we, Simon and Florian Berger, are leading the company towards the future with our father's knowledge and in his interest.

In accordance with agronomists, veterinarians and regional farmers, we develop and optimise natural, ecologically valuable and species-appropriate crude fibre products continuously.

The large acceptance of the trade mark AGROBS as well as receiving the EQUITANA Innovation Prize 2013 are an honour for us and an incentive to continuing on our path of producing high-quality crude fibre products.

So that you can enjoy your animal for a long time.

After work...



Florian Berger with Galathea

...it is time to feed good things



Simon Berger with Rose



Dear horse friends,

a horse is much more than just a pet. It is a family member, brings friendship, respect, love. And responsibility.

Whoever decides to share his time with horses – whether as owner, caregiver, horse sharer, trainer or veterinarian – takes on a great challenge. For our four-legged friend, we want a healthy and happy life. In addition to husbandry and exercise, the species-appropriate and healthy nutrition plays a great role. Here our horse friends approach an enormous task: We have to replace a piece of nature.

In the wild, the horse travels up to 20 kilometres per day, always searching for feed. It eats permanently, feed rich in fibre and small amounts, up to 18 hours a day. This is how it used to be. This natural way of life, however, is not very realistic these days. Horses graze on small pastures, nutrition is oftentimes unbalanced, they eat too fast and chew too little. The meadows have lost their biodiversity – they are cultivated too intensively in many places. The steppe animal has developed to a domestic animal, or better pet, and a working animal. Its natural needs, however, have not changed, just as little as its teeth, its stomach or its intestine. We can give back to the horse what it has needed the past thousands of years.

The variety of herbs and grasses still exists. One just has to let nature be nature. Therefore, AGROBS intentionally goes without high performance grasses and relies on the biodiversity of the Bavarian Alpine foothills. Traditionally, the nutritional concept of AGROBS is oriented towards a nature-based and species-appropriate nutrition – and this successfully for over 30 years. We trust on nature. Because nature gives everything for a healthy and happy life. To us and our animals.

Florian Berger

OWNER & GENERAL MANAGER

Simon Berger

OWNER & GENERAL MANAGER



Our philosophy

nature-based

healthy and natural feed of high quality and in harmony with our ecological system

Bavarian & regional

meadow grasses and herbs from the Bavarian Alpine foothills

species-appropriate

basis feed, rich in crude fibre, supplemented with valuable and life-preserving minerals, trace elements and vitamins

aware of tradition

traditional farming and biodiversity instead of high performance and mass production

scientific

ancient wisdoms, knowledge passed on from generation to generation in connection with the scientific knowledge of our agronomists and the know-how of our veterinarians and farmers

human

With our values, we, Simon and Florian Berger, our family and our team stand for the AGROBS products and their quality.

What makes AGROBS special?

RESEARCH

- own development of products with an expertise team of: agronomists, farmers, veterinarians
- annually ascertained analyses – monitoring of the natural resources and documentation of following ingredients:

trace elements	sugar
energy	crude protein
minerals	fructan
amino acids	starch
crude fibre	crude fat
vitamins	+ many more

QUALITY MANAGEMENT

- GMP+ qualifies for production of single and mixed feed
- contract cultivation with over 300 farmers
- land monitoring through our employees
- biodiverse stand of plants
- ideal soil conditions
- general land upkeep

INNOVATIVE THINKING – for over 30 years:

- free of molasses
- rich in structure
- free of grain
- low in sugar
- low in starch
- without artificial additives
- rich in crude fibre

SPECIES-APPROPRIATE FEED for herbivores

- roughage
- hay substitute and hay supplement
- supplementary feed
- nature-based concepts for nutrition
- additional feed
- mineral feed
- trace elements
- treats

TRANSPARENCY AND REGIONALITY

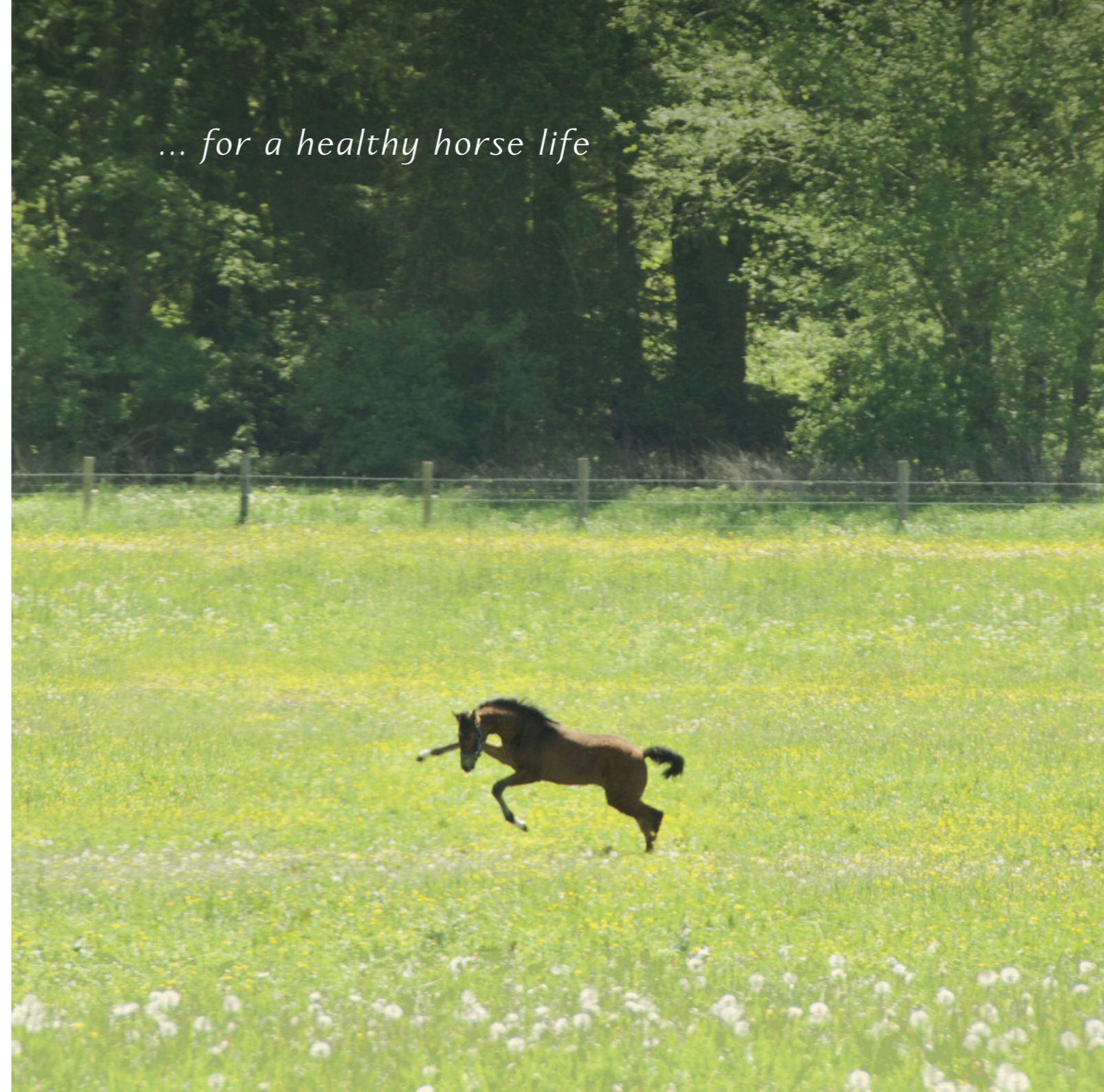
- regional cultivation and short production routes
- transparency of the products thanks to detailed ingredient information and recipes
- composition of the feed dependent on the needs and demands of your horse
- product lines, combinable with feed of other manufacturers

CONSULTATION

- client advice from our expertise team
- seminars and trainings
- consultation by telephone: +49(0)8171.41804860
- online advice: www.agrobs.de and info@agrobs.de

*We are there for you
and would be happy to advise you.
Your team at AGROBS*

... for a healthy horse life



Roughage – the horses' elixir of life

Roughage is the nutritional basis for our horses and should always be available in good quality and in sufficient amounts. In nature, horses are occupied with eating up to 18 hours. Thereby, the comparatively small stomach of the horses is continuously filled with feed. To make this work in modern horse husbandry, represents a great challenge for us. Husbandry and use of our horses has changed. Their digestive system, however, has stayed the same. The ideal provision is several small amounts of feed throughout the day, predominately with roughage and a small amount of concentrated or supplementary feed, if necessary.

What does that mean in practice?

Roughage should be provided daily in an amount of approximately 1.5 kg to 2 kg per 100 kg body weight. This declaration is always based on the ideal body weight. This means that a Warmblood weighing 600 kg requires 9 to 12 kg of roughage per day. Supplementation of mineral feed is necessary in most cases. The amount of mineral feed is dependent on the actual body weight and normally only changes during breeding, lactation and at senior age. Concentrated feed should always be supplied based on the actual body weight condition and the need of energy, and therefore should individually be adapted concerning the amount.

Mistakes in feeding take revenge after a long time, but last...

An incorrect nutrition generally takes revenge very late and is often not immediately associated with an illness. Too little roughage can have various consequences, e.g. dental problems, gastric ulcers, digestive disorders such as faecal water syndrome or colics. Even the risk of behavioural disorders is given. The best prevention against such clinical pictures: roughage in high quality and a sufficient amount. If this is not available, AGROBS offers a large product selection of hay substitutes or supplements. The complete **PRE ALPIN®** product line functions as high-quality and complete hay substitute.

A dark brown horse is captured in profile, running through a lush green field filled with small yellow and white flowers. The horse's mane and tail are flowing, suggesting movement. The background is a soft-focus line of green trees under a bright sky.

PRE ALPIN® brings back nature.

As steppe animal in the wild, the horse ingested grasses and herbs in nature that were rich in vital substances and nutrients. Everywhere. And depending on its needs.

But horses have become pets, live on pastures and in stalls and not in the wild anymore. Also, agriculture has changed a lot. Meadows and pastures are depleted, our biodiversity increasingly is lost, there is a lack of minerals and vital substances. Thereby, the possibility of a species-appropriate feed intake is lost for the horses.

For many years, AGROBS has been working against these tendencies with farmers from the Alpine foothills. With the product line **PRE ALPIN®**, a unique combination of over 60 different grasses and herbs from the Bavarian Alpine foothills.

PRE ALPIN® enables horses and ponies an ideal provision with basic supplies.

PRE ALPIN®

The Alpine foothills in a bag!

PRE ALPIN® WIESENCOBS®

The Original for all Horses – Also Available in Organic Quality

over 60 different grasses and herbs
guarantee high contents of
vital substances and crude fibre

extra large cobs for the
greatest possible amount
of structure

warm air-dried,
free of dust and mould

gentle pressing and
processing preserve many
native nutrients and
minerals as well as vitamins



Commercial Form:
20 kg paper sack

regular monitoring of the meadows
ensures the ideal harvesting time
for a high content of crude fibre and
an adequate amount of protein

free of molasses,
low in starch and fructan

PRE ALPIN® WIESENCOBS®

INGREDIENTS

- grasses and herbs

AREAS OF USE

- as basic feed (100% hay substitute)
- for enhancement of hay, silage, pasture
- as substitute for concentrated feed
- in case of undersupply with applicable crude fibre, e.g. due to tooth loss
- in case of respiratory problems due to dust and mould in the basic feed
- in case of age-related weight loss
- for increasing fluid intake
- for masking medication

FEEDING RECOMMENDATION

- as basic feed (100% hay substitute):
approximately 1.5 kg per 100 kg ideal body weight per day
- as concentrated feed:
1.2 kg substitute approximately 1 kg of grain
- for enhancement of the basic feed:
1 kg substitutes 1 kg of hay
- introduce new feed gradually
- per 1 kg soak with 1.5 to 3 litres of water
Especially in fast eaters, old horses or in case of dental problems, dampening respectively soaking of the feed is generally suggested.

ANALYTIC COMPONENTS

Crude protein	8,30 %
Crude oils and fats	1,90 %
Crude fibre	26,00 %
Crude ash	8,70 %
Calcium	0,71 %
Phosphorus	0,26 %
Magnesium	0,24 %
Chloride	0,27 %
Sodium	0,03 %
Potassium	1,78 %
Sulphur	0,17 %
Starch	<1,00 %
Sugar	8,40 %
Fructan	6,30 %
Zinc	29,90 mg/kg
Manganese	144 mg/kg
Copper	6,06 mg/kg
Selenium	<0,10 mg/kg
Lysine	0,34 %
Methionine	0,13 %
Cystine	0,08 %
Threonine	0,37 %
Digestible energy	8,00 DE MJ/kg
Metabolisable energy	6,80 ME MJ/kg
Dig. crude protein	6,60 %
Precaec. dig. crude protein	4,00 %

The analysed values are of native origin.

www.agrobs.de

PRE ALPIN® WIESENFLAKES

Newly Defined Structure – Roughage in Form of Flakes

over 60 different grasses and herbs guarantee high contents of vital substances and crude fibre

a high content of crude fibre enhances saliva production and eases digestion of the concentrated feed, feeding times are extended

warm air-dried

free of dust and mould

easy, fast, uncomplicated, ready for feeding in 5 min, even with cold water

Commercial Form: 20 kg paper sack

free of molasses, low in starch and fructan



PRE ALPIN® WIESENFLAKES

INGREDIENTS

- grasses and herbs

AREAS OF USE

- as basic feed (100% hay substitute)
- for enhancement of hay, silage, pasture
- as substitute for concentrated feed
- in case of undersupply with applicable crude fibre, e.g. due to tooth loss
- in case of respiratory problems due to dust and mould in the basic feed
- in case of age-related weight loss
- for increasing fluid intake
- extends feeding time
- for masking medication

FEEDING RECOMMENDATION

- as basic feed (100% hay substitute): approximately 1.5 kg per 100 kg ideal body weight per day
 - as concentrated feed: 1.2 kg substitute approximately 1 kg of grain
 - for enhancement of the basic feed: 1 kg substitutes approximately 1 kg of hay
 - introduce new feed gradually
- Especially in fast eaters, old horses or in case of dental problems, dampening respectively soaking of the feed is generally suggested.

ANALYTIC COMPONENTS

Crude protein	8,80 %
Crude oils and fats	2,50 %
Crude fibre	24,20 %
Crude ash	9,00 %
Calcium	0,66 %
Phosphorus	0,25 %
Magnesium	0,24 %
Chloride	0,26 %
Sodium	0,03 %
Potassium	1,61 %
Sulphur	0,16 %
Starch	<1,00 %
Sugar	9,30 %
Fructan	6,30 %
Zinc	28,30 mg/kg
Manganese	132 mg/kg
Copper	5,98 mg/kg
Selenium	<0,10 mg/kg
Lysine	0,34 %
Methionine	0,14 %
Cystine	0,09 %
Threonine	0,38 %
Digestible energy	8,50 DE MJ/kg
Metabolisable energy	7,40 ME MJ/kg
Dig. crude protein	7,00 %
Precaec. dig. crude protein	4,10 %

The analysed values are of native origin.

www.agrobs.de

PRE ALPIN® PROTEIN LIGHT FLAKES

Low-Protein Roughage in Form of Flakes

without herbs, appropriate for horses with allergies, warm air-dried

to balance protein-rich feed in form of pasture or haylage



specific low-protein blend of grasses

appropriate in case of liver and kidney problems

for horses that are dependent on low contents of protein (e.g. in case of summer itch)



Commercial Form: 15 kg paper sack

free of molasses, low in fructan

fast, easy, uncomplicated, ready for feeding in 5 min

PRE ALPIN® PROTEIN LIGHT FLAKES

INGREDIENTS

- grasses

AREAS OF USE

- as basic feed (100% hay substitute)
- for enhancement of hay, silage, pasture
- in spring and fall during pasture time when the grass is young and therefore contains a lot of protein but little crude fibre
- in case of respiratory problems due to dust, herbs and mould in the basic feed
- in case of protein hypersensitivity
- for a low-protein diet in case of liver or kidney problems and in horses with summer itch
- for horses that are allergic to herbs or that should not consume additional herbs due to a homoeopathic treatment

FEEDING RECOMMENDATION

- as basic feed (100% hay substitute): approximately 1.2 to 1.5 kg per 100 kg ideal body weight per day
- as concentrated feed: 1.2 kg substitute approximately 1 kg of grain
- for enhancement of the basic feed: 1 kg substitutes approximately 1 kg of hay
- introduce new feed gradually
Especially in fast eaters, old horses or in case of dental problems, dampening respectively soaking of the feed is generally suggested.

ANALYTIC COMPONENTS

Crude protein	5,90 %
Crude oils and fats	1,70 %
Crude fibre	27,90 %
Crude ash	4,30 %
Calcium	0,21 %
Phosphorus	0,23 %
Magnesium	0,08 %
Chloride	0,22 %
Sodium	<0,01 %
Potassium	1,23 %
Sulphur	0,11 %
Starch	6,30 %
Sugar	7,20 %
Fructan	6,50 %
Zinc	18,00 mg/kg
Manganese	29,80 mg/kg
Copper	<5,00 mg/kg
Selenium	<0,50 mg/kg
Lysine	0,22 %
Methionine	0,09 %
Cystine	0,10 %
Threonine	0,24 %
Digestible energy	8,20 DE MJ/kg
Metabolisable energy	7,20 ME MJ/kg
Dig. crude protein	4,60 %
Precaec. dig. crude protein	3,90 %

The analysed values are of native origin.
www.agrobs.de

PRE ALPIN® SENIOR

Basic Feed up to the Old Age



PRE ALPIN® SENIOR

INGREDIENTS

- grasses and herbs
- cold-pressed oil mixture (linseed oil, camelina oil)

AREAS OF USE

- as basic feed (100% hay substitute)
- for enhancement of hay, silage, pasture
- as substitute for concentrated feed
- in case of undersupply with applicable crude fibre, e.g. due to tooth loss
- in case of age-related weight loss
- for increasing fluid intake
- extends feeding time
- in case of chewing and dental problems
- for masking medication

FEEDING RECOMMENDATION

- as basic feed (100% hay substitute): approximately 1.5 kg per 100 kg ideal body weight per day
- as concentrated feed: 1.2 kg substitute approximately 1 kg of grain
- for enhancement of the basic feed: 1 kg substitutes approximately 1 kg of hay
- introduce new feed gradually
- if necessary, dampen **PRE ALPIN®** Senior, especially in old horses with low water intake.

ANALYTIC COMPONENTS

Crude protein	8,50 %
Crude oils and fats	2,70 %
Crude fibre	25,60 %
Crude ash	8,40 %
Calcium	0,63 %
Phosphorus	0,25 %
Magnesium	0,22 %
Chloride	0,28 %
Sodium	0,03 %
Potassium	1,66 %
Sulphur	0,15 %
Starch	<1,00 %
Sugar	8,20 %
Fructan	6,20 %
Zinc	26,20 mg/kg
Manganese	122,00 mg/kg
Copper	5,46 mg/kg
Selenium	<0,10 mg/kg
Lysine	0,35 %
Methionine	0,14 %
Cystine	0,08 %
Threonine	0,37 %
Digestible energy	8,20 DE MJ/kg
Metabolisable energy	7,00 ME MJ/kg
Dig. crude protein	6,80 %
Precaec. dig. crude protein	4,50 %

The analysed values are of native origin.

www.agrobs.de



AGROBS®

PRE ALPIN® ASPERO

The Special Structure

over 60 different grasses and herbs guarantee high contents of vital substances and crude fibre

coarse fibre structure, extends feeding time and enhances saliva production

appropriate for temperamental horses

warm air-dried

free of dust and mould



Commercial Form:
20 kg bale

free of molasses,
low in starch and fructan

supply with essential fatty acids
due to the use of cold-pressed
linseed oil and camelina oil

PRE ALPIN® ASPERO

INGREDIENTS

- grasses and herbs
- cold-pressed oil mixture (linseed oil, camelina oil)

AREAS OF USE

- as basic feed (100% hay substitute)
- for enhancement of hay, silage, pasture
- in case of respiratory problems due to poor feed quality
- as substitute and supplementation for concentrated feed
- mix in with the concentrated feed for extended feeding time

FEEDING RECOMMENDATION

- as basic feed (100% hay substitute): approximately 1.5 kg per 100 kg ideal body weight per day
- as concentrated feed: 1.2 kg substitute approximately 1 kg of grain
- for enhancement of the basic feed: 1 kg substitutes 1 kg of hay

ANALYTIC COMPONENTS

Crude protein	8,00 %
Crude oils and fats	3,40 %
Crude fibre	28,70 %
Crude ash	7,40 %

Calcium	0,50 %
Phosphorus	0,22 %
Magnesium	0,19 %
Chloride	0,31 %
Sodium	0,02 %
Potassium	1,37 %
Sulphur	0,14 %

Starch	1,10 %
Sugar	9,70 %
Fructan	6,10 %

Zinc	23,10 mg/kg
Manganese	104,00 mg/kg
Copper	4,31 mg/kg
Selenium	<0,10 mg/kg

Lysine	0,32 %
Methionine	0,13 %
Cystine	0,08 %
Threonine	0,34 %

Digestible energy	8,20 DE MJ/kg
Metabolisable energy	7,00 ME MJ/kg
Dig. crude protein	6,40 %
Precaec. dig. crude protein	4,00 %

The analysed values are of native origin.

www.agrobs.de

ALPENHEU

The Basis of Every Diet



ALPENHEU

INGREDIENTS

- grasses and herbs, warm air-dried and sun-dried

AREAS OF USE

- 100% hay basis feed
- for enhancement of the daily ration of hay
- also ideal for travelling due to the consistent hay quality

FEEDING RECOMMENDATION

- approximately 1.5 kg per 100 kg ideal body weight per day
- hard keepers and underweight horses can be fed Alpenheu ad libitum

ANALYTIC COMPONENTS

Crude protein	5,90 %
Crude oils and fats	2,20 %
Crude fibre	30,50 %
Crude ash	5,30 %
Calcium	0,45 %
Phosphorus	0,16 %
Magnesium	0,19 %
Chloride	0,23 %
Sodium	0,04 %
Potassium	1,52 %
Sulphur	0,12 %
Starch	<1,00 %
Sugar	8,50 %
Fructan	6,80 %
Zinc	18,30 mg/kg
Manganese	70,60 mg/kg
Copper	2,99 mg/kg
Selenium	<0,50 mg/kg
Lysine	0,27 %
Methionine	0,09 %
Cystine	0,07 %
Threonine	0,25 %
Digestible energy	7,90 DE MJ/kg
Metabolisable energy	6,80 ME MJ/kg
Dig. crude protein	4,50 %
Precaec. dig. crude protein	3,90 %

The analysed values are of native origin.

www.agrobs.de

PRE ALPIN® COMPACT

The Alpine Foothills in Brick Form



PRE ALPIN® COMPACT

INGREDIENTS

- grasses and herbs

AREAS OF USE

- as basic feed (100% hay substitute)
- for enhancement of hay, silage, pasture
- for travelling with small packaging size
- for healthy occupation

FEEDING RECOMMENDATION

- approximately 1.5 kg per 100 kg ideal body weight per day
- for enhancement of the basic feed: 1 slice substitutes approximately 1 kg of hay
- place in crib or small holed hay net to keep occupied

ANALYTIC COMPONENTS

Crude protein	7,00 %
Crude oils and fats	1,70 %
Crude fibre	30,20 %
Crude ash	6,20 %
Calcium	0,46 %
Phosphorus	0,21 %
Magnesium	0,18 %
Chloride	0,25 %
Sodium	0,02 %
Potassium	1,39 %
Sulphur	0,14 %
Starch	1,30 %
Sugar	7,90 %
Fructan	6,60 %
Zinc	21,50 mg/kg
Manganese	108 mg/kg
Copper	<5,00 mg/kg
Selenium	<0,10 mg/kg
Lysine	0,30 %
Methionine	0,11 %
Cystine	0,09 %
Threonine	0,30 %
Digestible energy	7,80 DE MJ/kg
Metabolisable energy	6,60 ME MJ/kg
Dig. crude protein	5,50 %
Precaec. dig. crude protein	4,40 %

The analysed values are of native origin.

www.agrobs.de



*The wisdom of nature
still speaks from the
animals' eyes.*

Arthur Schopenhauer, German philosopher



ALPENGRÜN MÜSLI

Considerate of Naturalness

PRE ALPIN® dried green fibres and root vegetables provide highly-digestible crude fibre

high-quality oil mixture of linseed oil and camelina oil as source of essential fatty acids

Commercial Form:
15 kg paper sack
4 kg bucket



rich in natural vital substances

sunflower seeds, linseed and black cumin enhance digestion

blossoms and leaves round off the mixture

appropriate for horses with a sensitive metabolism

free of grain and molasses, without artificial additives

ALPENGRÜN MÜSLI

INGREDIENTS

- PRE ALPIN® dried green fibres
- linseed
- sunflower seeds
- black cumin
- cold-pressed oil mixture (linseed oil, camelina oil)
- apple fibres, carrot, cut rosehip, parsnips, beetroots, marigold blossoms, raspberry and blackberry leaves, cornflower blossoms

AREAS OF USE

- as single crib feed
- as supplementation, rich in vital substances, to crib feed
- for horses with metabolic disorders or horses with a sensitive metabolism (ECS, EMS, PSSM, laminitis)
- for a low-starch and low-sugar diet

FEEDING RECOMMENDATION

- dependent on type of horse and performance: approximately 100 to 500 g per 100 kg ideal body weight
- for enhancement of the basic crib feed: 1 kg substitutes approximately 1 kg of grain
- if necessary, AlpenGrün Müsli can be dampened with water

ANALYTIC COMPONENTS

Crude protein	11,20 %
Crude oils and fats	6,50 %
Crude fibre	22,70 %
Crude ash	6,80 %
Calcium	0,55 %
Phosphorus	0,32 %
Magnesium	0,25 %
Chloride	0,24 %
Sodium	0,04 %
Potassium	1,40 %
Sulphur	0,18 %
Starch	2,80 %
Sugar	9,70 %
Fructan	6,00 %
Zinc	31,90 mg/kg
Manganese	95,50 mg/kg
Copper	7,88 mg/kg
Selenium	<0,10 mg/kg
Lysine	0,46 %
Methionine	0,19 %
Cystine	0,16 %
Threonine	0,44 %
Digestible energy	10,10 DE MJ/kg
Metabolisable energy	8,80 ME MJ/kg
Dig. crude protein	9,10 %
Precaec. dig. crude protein	7,00 %

The analysed values are of native origin.

www.agrobs.de



ALPENGRÜN MASH

And Everything is All Right

prebiotic Prenatura® fibres
enhance gastro-intestinal health

psyllium and linseed
provide important mucins

especially tasty with fruits
and vegetables, such as
carrot, beetroot, parsnip
and apple

fennel and caraway
support digestion

rosehips serve
as natural source
for vitamin C

very concentrated,
can also be mixed
with cold water

ideal calcium-
phosphorus-ratio of 2:1

free of grain and molasses,
free of wheat bran,
no artificial additives



Commercial Form:
15 kg paper sack
5 kg bucket



ALPENGRÜN MASH

INGREDIENTS

- Prenatura® fibres
- linseed granules
- **PRE ALPIN®** structured fibres
- apple fibres, beetroots, carrot, parsnips
- cold-pressed oil mixture (linseed oil, camelina oil)
- psyllium, rosehip shells (seedless)
- fennel, caraway

AREAS OF USE

- healthy additional feed
- for horses with a sensitive digestion
- in case of faecal water syndrome and diarrhoea
- for regeneration and as build-up feed
- for horses with a sensitive metabolism (ECS, EMS, PSSM, laminitis)
- for older horses

FEEDING RECOMMENDATION

- 80 to 100 g per 100 kg ideal body weight
- mix AlpenGrün Mash with warm water, stir well, soak approximately 5 to 10 min and feed lukewarm
- if necessary, AlpenGrün Mash can also be mixed with cold water, soaking time increases to approximately 15 to 20 min
- mixture ratio AlpenGrün Mash to water: 1:3 to 1:7
Example: 0.5 kg AlpenGrün Mash : 1.5 to 3.5 litres of water
- appropriate for daily use

ANALYTIC COMPONENTS

Crude protein	12,80 %
Crude oils and fats	4,80 %
Crude fibre	18,90 %
Crude ash	7,30 %
Calcium	0,53 %
Phosphorus	0,30 %
Magnesium	0,24 %
Chloride	0,22 %
Sodium	0,06 %
Potassium	1,37 %
Sulphur	0,17 %
Starch	2,50 %
Sugar	9,30 %
Fructan	4,70 %
Zinc	31,50 mg/kg
Manganese	89,9 mg/kg
Copper	8,58 mg/kg
Selenium	<0,10 mg/kg
Lysine	0,51 %
Methionine	0,21 %
Cystine	0,17 %
Threonine	0,51 %
Digestible energy	10,30 DE MJ/kg
Metabolisable energy	8,90 ME MJ/kg
Dig. crude protein	10,50 %
Precaec. dig. crude protein	8,30 %

The analysed values are of native origin.

www.agrobs.de

LEICHTGENUSS

Fibre-Light Feed To Keep Horses Occupied



LEICHTGENUSS

INGREDIENTS

- meadow grasses and herbs
- green oats, straw
- hibiscus blossoms, bush rose petals, corn flower blossoms, sun flower petals

AREAS OF USE

- natural feed for all horses, rich in fibre
- specifically for easy keepers and obese horses
- for horses with a metabolic disorder or sensitive metabolism (ECS, EMS, PSSM, laminitis)
- high-quality feed for now and then to keep horses occupied
- as feed for horses with stall rest

FEEDING RECOMMENDATION

- as feed to keep horses occupied: 50 to 300 g per 100 kg ideal body weight per day
- for enhancement, adapted to the amount of basic feed:
1 kg substitutes approximately 1 kg of hay
2 kg substitute approximately 1 kg of concentrated feed
- Leichtgenuss can substitute up to 1/3 of the complete basic ration, if necessary

ANALYTIC COMPONENTS

Crude protein	8,20 %
Crude oils and fats	2,20 %
Crude fibre	31,90 %
Crude ash	8,40 %
Calcium	0,44 %
Phosphorus	0,26 %
Magnesium	0,18 %
Chloride	0,35 %
Sodium	0,05 %
Potassium	1,97 %
Sulphur	0,16 %
Starch	1,10 %
Sugar	4,60 %
Fructan	4,80 %
Zinc	24,20 mg/kg
Manganese	135,00 mg/kg
Copper	5,37 mg/kg
Selenium	<0,10 mg/kg
Lysine	0,33 %
Methionine	0,12 %
Cystine	0,09 %
Threonine	0,33 %
Digestible energy	7,20 DE MJ/kg
Metabolisable energy	5,90 ME MJ/kg
Dig. crude protein	6,60 %
Precaec. dig. crude protein	4,70 %

The analysed values are of native origin.

www.agrobs.de



*Care and not a noble stall
makes a good horse.* Danish saying



HAFERWIESE - Strukturmüsli

Muesli, Rich in Structure, with Black and White Oats

PRE ALPIN® dried green fibres promote chewing activity and saliva production which enhances digestion

corn flowers petals and sunflower petals provide vital substances

alfalfa provides essential amino acids for muscle build-up

black oat is rich in secondary plant products with an antioxidant effect

Commercial Form:
15 kg paper sack
5 kg bucket



white oat provides energy from well-digestible starch

carrot and root vegetables make it tasty and provide fibre for a healthy digestion

HAFER WIESE - Strukturmüsli

INGREDIENTS

- **PRE ALPIN®** dried green fibres
- oats (black oats, white oats)
- oil mixture (linseed oil, camelina oil)
- alfalfa, linseed cake, sunflower seeds
- carrot dices, rosehip (cut), parsnip, beetroot, sunflower petals, corn flower petals

AREAS OF USE

- as single crib feed
- as build-up feed for sport horses and young horses
- for enhancement of the conventional crib feed, rich in vital substances
- extends feeding time due to the structure-rich recipe

FEEDING RECOMMENDATION

- as single crib feed: approximately 100 to 500 g per 100 kg ideal body weight
- as supplementation to the conventional crib feed
- HaferWiese – Strukturmüsli can be dampened with water, if necessary

ANALYTIC COMPONENTS

Crude protein	12,10 %
Crude oils and fats	6,20 %
Crude fibre	23,20 %
Crude ash	6,20 %
Calcium	0,45 %
Phosphorus	0,35 %
Magnesium	0,18 %
Chloride	0,20 %
Sodium	0,03 %
Potassium	1,54 %
Sulphur	0,16 %
Starch	12,10 %
Sugar	6,40 %
Fructan	2,60 %
Zinc	38,00 mg/kg
Manganese	88,00 mg/kg
Copper	19,20 mg/kg
Selenium	<0,30 mg/kg
Lysine	0,52 %
Digestible energy	10,05 DE MJ/kg
Metabolisable energy	8,60 ME MJ/kg
Dig. crude protein	9,90 %
Precaec. dig. crude protein	8,70 %

The analysed values are of native origin.

www.agrobs.de

KRAFTPAKET

The Strength of the Complete Plant for Energy and Performance

very high content of structure for a healthy digestion thanks to use of the complete plant

alfalfa cobs, rich in leaves, provide essential amino acids for muscle build-up

protein-rich meadow grasses and herbs contain many natural vital substances

maize cobs, made of the complete plant, provide highly digestible starch and, therefore, serve as ideal energy source for build-up of underweight horses

free of molasses and dust

Commercial Form:
20 kg paper sack



KRAFTPAKET

INGREDIENTS

- meadow grasses and herbs
- alfalfa
- complete maize plant

AREAS OF USE

- as build-up feed in times of increased need (growth, gestation, performance in tournaments and sports)
- as complete crib feed
- for enhancement of hay and silage
- for healthy build-up of underweight horses as well as in case of age-related weight loss

FEEDING RECOMMENDATION

- dependent on type of horse and performance: 300 to 500 g per 100 kg ideal body weight
 - for build-up: 1.2 kg substitute approximately 1 kg of grain
- Especially in fast eaters, old horses or in case of dental problems, dampening respectively soaking of the feed is generally suggested.

ANALYTIC COMPONENTS

Crude protein	10,70 %
Crude oils and fats	2,70 %
Crude fibre	25,30 %
Crude ash	8,00 %
Calcium	1,07 %
Phosphorus	0,27 %
Magnesium	0,23 %
Chloride	0,34 %
Sodium	0,03 %
Potassium	1,73 %
Sulphur	0,17 %
Starch	8,00 %
Sugar	5,20 %
Fructan	4,30 %
Zinc	26,00 mg/kg
Manganese	90,90 mg/kg
Copper	7,33 mg/kg
Selenium	<0,10 mg/kg
Vitamin E	54,90 mg/kg
β-Carotin	46,50 mg/kg
Lysine	0,48 %
Methionine	0,16 %
Cystine	0,12 %
Threonine	0,44 %
Digestible energy	8,60 DE MJ/kg
Metabolisable energy	7,30 ME MJ/kg
Dig. crude protein	9,40 %
Precaec. dig. crude protein	6,20 %

The analysed values are of native origin.

www.agrobs.de

MAISCOBS

From the Complete Plant

especially rich in crude fibre through use of the complete plant

provide energy for endurance performance

for nervous and very temperamental horses

for build-up of underweight horses and hard keepers



Commercial Form:
20 kg paper sack

high energy density with low protein content

appropriate for liver and kidney diets

MAISCOBS

INGREDIENTS

- complete maize plant

AREAS OF USE

- as build-up feed in times of increased need
- in underweight and/or old horses for build-up
- appropriate for liver and kidney diets
- in case of endurance performance (e.g. in endurance or military horses)

FEEDING RECOMMENDATION

- dependent on type of horse and performance: 100 to 300 g per 100 kg ideal body weight
- Especially in fast eaters, old horses or in case of dental problems, dampening respectively soaking of the feed is generally suggested.

ANALYTIC COMPONENTS

Crude protein	6,00 %
Crude oils and fats	2,30 %
Crude fibre	18,00 %
Crude ash	3,70 %
Calcium	0,24 %
Phosphorus	0,19 %
Magnesium	0,15 %
Chloride	0,17 %
Sodium	<0,01 %
Potassium	1,04 %
Sulphur	0,08 %
Starch	26,00 %
Sugar	7,40 %
Fructan	3,70 %
Zinc	16,90 mg/kg
Manganese	61,10 mg/kg
Copper	<5,00 mg/kg
Selenium	<0,10 mg/kg
Lysine	0,16 %
Methionine	0,11 %
Cystine	0,09 %
Threonine	0,24 %
Digestible energy	10,50 DE MJ/kg
Metabolisable energy	9,60 ME MJ/kg
Dig. crude protein	4,70 %
Precaec. dig. crude protein	4,00 %

The analysed values are of native origin.

www.agrobs.de

GRÜNHAFER

Oats in a Different Way

as grain substitute
or to extend feeding time

high content of crude fibre
with low starch and sugar
contents

especially tasty

warm air-dried

appropriate for
horses with a sensitive
metabolism

rich in natural vitamins
and trace elements

Commercial Form:
15 kg bale

free of molasses

naturally regulates
the acid-base balance



GRÜNHAFER

INGREDIENTS

- green oats, chaffed

AREAS OF USE

- as substitute for concentrated feed
- for enhancement of crib feed
- for horses with a sensitive metabolism
- for horses with a sensitive intestine
- for regulation of the acid-base balance

FEEDING RECOMMENDATION

- as supplementation to basic feed:
100 to 500 g per 100 kg ideal body weight
- as grain substitute:
1.2 kg substitute approximately 1 kg of grain

ANALYTIC COMPONENTS

Crude protein	10,20 %
Crude oils and fats	2,20 %
Crude fibre	29,20 %
Crude ash	9,50 %
Calcium	0,34 %
Phosphorus	0,35 %
Magnesium	0,20 %
Chloride	0,22 %
Sodium	0,10 %
Potassium	2,53 %
Sulphur	0,19 %
Starch	<1,00 %
Sugar	2,90 %
Fructan	3,40 %
Zinc	28,50 mg/kg
Manganese	186 mg/kg
Copper	6,57 mg/kg
Selenium	<0,10 mg/kg
Lysine	0,43 %
Methionine	0,15 %
Cystine	0,11 %
Threonine	0,39 %
Digestible energy	6,70 DE MJ/kg
Metabolisable energy	5,30 ME MJ/kg
Dig. crude protein	8,30 %
Precaec. dig. crude protein	5,80 %

The analysed values are of native origin.

www.agrobs.de



*Everything in Nature
contains all the powers of Nature.
Everything is made of
one hidden stuff.*

Ralph Waldo Emerson, American philosopher



LUZERNE+

Structured Feed with the Special Plus

Bavarian alfalfa, rich in essential amino acids

rich in crude fibre, warm air-dried, free of dust and hygienic

appropriate for horses with a sensitive digestion

green oat contains many natural vitamins and trace elements

Commercial Form: 15 kg bale



low in starch, fructan and sugar

appropriate for nervous and temperamental horses, also appropriate for build-up

LUZERNE+

INGREDIENTS

- alfalfa, green oats
- cold-pressed oil mixture (linseed oil, camelina oil)

AREAS OF USE

- for sport and breeding horses, horses during build-up
- for horses sensitive to starch and sugar
- in case of fast eaters for a slower feed intake
- for underweight horses or hard keepers, very tasty

FEEDING RECOMMENDATION

- as supplementation to basic feed: 100 to 500 g per 100 kg ideal body weight
- as grain substitute: 1.2 kg substitute approximately 1 kg of grain

ANALYTIC COMPONENTS

Crude protein	9,90 %
Crude oils and fats	2,70 %
Crude fibre	36,10 %
Crude ash	7,30 %
Calcium	0,79 %
Phosphorus	0,30 %
Magnesium	0,19 %
Chloride	0,12 %
Sodium	0,02 %
Potassium	2,25 %
Sulphur	0,12 %
Starch	4,10 %
Sugar	3,60 %
Fructan	3,40 %
Zinc	19,70 mg/kg
Manganese	40,10 mg/kg
Copper	5,70 mg/kg
Selenium	<0,10 mg/kg
Vitamin E	24,30 mg/kg
β-Carotin	25,50 mg/kg
Lysine	0,49 %
Methionine	0,14 %
Cystine	0,10 %
Threonine	0,40 %
Digestible energy	6,50 DE MJ/kg
Metabolisable energy	4,90 ME MJ/kg
Dig. crude protein	8,00 %
Precaec. dig. crude protein	6,90 %

The analysed values are of native origin.

www.agrobs.de

LUZERNECOBS

Traditional Horse Feed

contains many natural vitamins and minerals, such as β -carotene

high-quality supplier of protein and energy

rich in calcium for healthy bone development

complete plant, warm air-dried



Commercial Form:
20 kg paper sack

free of molasses,
low in starch and fructan

optimises the calcium-phosphorus-ratio in case of high grain contents in the ration

LUZERNECOBS

INGREDIENTS

- complete alfalfa plant from Bavarian cultivation

AREAS OF USE

- as supplementation to and for enhancement of the basic feed
- as substitute for concentrated feed respectively grain
- as supplier of protein and energy for breeding and sport horses as well as for growing horses
- as supplier of essential fatty acids

FEEDING RECOMMENDATION

- for enhancement of basic feed:
300 to 500 g per 100 kg ideal body weight
- as grain substitute: 1.2 kg substitute 1 kg of grain
- as feed for sport and breeding horses:
500 to 800 g per 100 kg ideal body weight
Especially in fast eaters, old horses or in case of dental problems, dampening respectively soaking of the feed is generally suggested.

ANALYTIC COMPONENTS

Crude protein	15,90 %
Crude oils and fats	3,40 %
Crude fibre	25,00 %
Crude ash	10,60 %
Calcium	1,63 %
Phosphorus	0,32 %
Magnesium	0,23 %
Chloride	0,39 %
Sodium	0,04 %
Potassium	2,30 %
Sulphur	0,21 %
Starch	2,50 %
Sugar	4,40 %
Fructan	3,90 %
Zinc	27,30 mg/kg
Manganese	79,60 mg/kg
Copper	8,38 mg/kg
Selenium	<0,10 mg/kg
Vitamin E	69,80 mg/kg
β -Carotin	90,00 mg/kg
Lysine	0,80 %
Methionine	0,23 %
Cystine	0,17 %
Threonine	0,70 %
Digestible energy	8,40 DE MJ/kg
Metabolisable energy	6,60 ME MJ/kg
Dig. crude protein	13,10 %
Precaec. dig. crude protein	10,20 %

The analysed values are of native origin.

www.agrobs.de

Horse Alpin®

Working Horses Need Strength

easy-digestible **PRE ALPIN®** dried green fibres in combination with broken down maize, barley and linseed

the contained linseed provides essential fatty acids and ensures a shiny coat

pellets with a diameter of 8 mm

with vitamins and minerals
free of oat and wheat

Commercial Form:
25 kg paper sack

free of molasses and no added binding agents

the coarse structure of the contents is maintained due to gentle pressing



INGREDIENTS

- **PRE ALPIN®** dried green fibres
- maize
- barley
- linseed
- AGROBS Naturmineral

AREAS OF USE

- as sole concentrated feed
- as supplement to other concentrated feed
- in case of intolerance towards molasses and other additives

FEEDING RECOMMENDATION

- 400 to 700 g per 100 kg ideal body weight
- when feeding 700 g per 100 kg ideal body weight, mineral feed must not be supplemented
- larger amounts should be divided into several small portions

Horse Alpin®

ANALYTIC COMPONENTS

Crude protein	10,50 %	Additives:	
Crude oils and fats	3,50 %	Vitamin A	750,00 I.E.
Crude fibre	17,50 %	Vitamin D3	75,00 I.E.
Crude ash	7,70 %	Vitamin E	67,50 mg/kg
		Vitamin B1	6,75 mg/kg
Calcium	0,65 %	Vitamin B2	7,50 mg/kg
Phosphorus	0,29 %	Vitamin B6	3,75 mg/kg
Magnesium	0,23 %	Vitamin B12	37,50 mcg
Sodium	0,01 %		
Potassium	1,31 %	Ca-pantothenate	9,00 mg/kg
		Nicotinic acid	18,00 mg/kg
Starch	17,10 %	Choline chloride	4,20 mg/kg
Sugar	6,40 %	Folic acid	2,10 mg/kg
Fructan	5,60 %	Biotin	150,00 mcg
		Iron	3,00 mg/kg
Lysine	0,39 %	Copper	7,50 mg/kg
Methionine	0,18 %	Manganese	10,50 mg/kg
Cystine	0,13 %	Zinc	60,00 mg/kg
Threonine	0,43 %	Selenium	0,15 mg/kg
		Cobalt	0,75 mg/kg
Dig. energy	10,10 DE MJ/kg	Iodine	0,15 mg/kg
Met. energy	8,90 ME MJ/kg		
Dig. crude protein	8,50 %	Technological additive:	
Precaec. dig. crude protein	5,50 %	Silica	60 mg/kg

www.agrobs.de

Horse Alpin® SENIOR

Complete Provision for Aged Horses

PRE ALPIN® dried green fibres ensure high contents of crude fibre and a high-quality hay substitute

linseed and linseed oil provide essential fatty acids and energy

single feed – covers the need of crude fibre and concentrated feed

with vitamins and minerals

non-pressed

appropriate in case of dental problems, such as tooth loss or abrasion of the chewing surface



Commercial Form:
15 kg paper sack

free of molasses and ethereal oils

thermally broken down maize and barley flakes supplement the blend with highly-digestible starch

INGREDIENTS

- PRE ALPIN® dried green fibres
- maize flakes
- barley flakes
- linseed, linseed oil, camelina oil
- AGROBS Naturmineral

AREAS OF USE

- as single feed for aged horses
- as supplement to the basic feed
- as substitution for the basic feed – ideal for picky horses

FEEDING RECOMMENDATION

- 1.5 to 2 kg per 100 kg ideal body weight per day
 - when feeding 1.5 kg per 100 kg ideal body weight, mineral feed must not be supplemented
- Especially in fast eaters, old horses or in case of dental problems, dampening respectively soaking of the feed is generally suggested.

Horse Alpin® SENIOR

ANALYTIC COMPONENTS

Crude protein	9,20 %	Additives:	
Crude oils and fats	3,30 %	Vitamin A	500,00 I.E.
Crude fibre	19,80 %	Vitamin D3	50,00 I.E.
Crude ash	7,80 %	Vitamin E	45,00 mg/kg
		Vitamin B1	4,50 mg/kg
Calcium	0,59 %	Vitamin B2	5,00 mg/kg
Phosphorus	0,26 %	Vitamin B6	2,50 mg/kg
Magnesium	0,21 %	Vitamin B12	25,00 mcg
Sodium	0,10 %		
Potassium	1,29 %	Ca-pantothenate	6,00 mg/kg
		Nicotinic acid	12,00 mg/kg
Starch	14,40 %	Choline chloride	2,80 mg/kg
Sugar	7,40 %	Folic acid	1,40 mg/kg
Fructan	6,80 %	Biotin	100,00 mcg
		Iron	2,00 mg/kg
Lysine	0,34 %	Copper	5,00 mg/kg
Methionine	0,14 %	Manganese	7,00 mg/kg
Cystine	0,11 %	Zinc	40,00 mg/kg
Threonine	0,36 %	Selenium	0,10 mg/kg
		Cobalt	0,50 mg/kg
Dig. energy	9,70 DE MJ/kg	Iodine	0,10 mg/kg
Met. energy	8,50 ME MJ/kg		
Dig. crude protein	7,40 %	Technological additive:	
Precaec. dig. crude protein	5,20 %	Silica	40 mg/kg

www.agrobs.de

STROH

Golden Times in the Crib

high-quality feeding straw
for all animals

best quality due to warm
air-drying and additional
dust extraction

appropriate as low-energy
supplement for obese
animals

appropriate for horses
sensitive to dust



Commercial Form:
4 kg bale
10 kg bale

in form of chaff

very low in protein – ideal for
balancing a feeding ration
with high energy contents

STROH

INGREDIENTS

- barley and wheat straw,
chaffed and warm air-dried

AREAS OF USE

- for enhancement of the basic feed
- as low-energy feed to keep horses occupied
- in case of straw-free bedding as guarantee for a sufficiently long chewing period in addition to hay, grass and concentrated feed

FEEDING RECOMMENDATION

- up to max. 500 g per 100 kg ideal body weight per day
- solely feeding straw is not recommended without supplementation of hay/pasture grass

ANALYTIC COMPONENTS

Crude protein	4,00 %
Crude oils and fats	1,60 %
Crude fibre	39,40 %
Crude ash	5,90 %
Calcium	0,37 %
Phosphorus	0,19 %
Magnesium	0,06 %
Chloride	0,12 %
Sodium	<0,01 %
Potassium	1,20 %
Starch	<1,00 %
Sugar	0,50 %
Fructan	2,60 %
Zinc	8,07 mg/kg
Manganese	24,70 mg/kg
Copper	2,78 mg/kg
Selenium	<0,10 mg/kg
Lysine	0,17 %
Methionine	0,06 %
Cystine	0,06 %
Threonine	0,18 %
Digestible energy	6,00 DE MJ/kg
Metabolisable energy	4,90 ME MJ/kg
Dig. crude protein	3,00 %
Precaec. dig. crude protein	1,80 %

The analysed values are of native origin.

www.agrobs.de

From seeding...



*...to the finished product –
everything from one source*

AGROBS®

SEEDS

Prosperity of the Bavarian Alpine Foothills for Your Pasture



Horse pastures have to meet high standards. On the one hand they serve as food source, on the other hand as habitat for the flight and walking animal horse.

In order to meet both important issues, AGROBS chooses special sorts of grasses and herbs for its seed blends.

Many pastures are grazed too intensively. This results in considerable trample damage, the foundation of feed

deteriorates. At last, undesired and persistent weeds spread out, such as dock, thistles or buttercup. Constant care is therefore essential in order to maintain a pasture.

This includes reseeding regularly, especially in stands that show blank spaces or are overgrazed.

AGROBS offers three selected seed blends for horse pastures.

PRE ALPIN® SAATGUT

Biodiversity of the Alpine Foothills

The prosperity of grasses and herbs in the Bavarian Alpine foothills is unique.

On this basis, AGROBS has developed a special seed blend for horse meadows. A balanced blend of valuable high and low grasses, refined with important and tasty herbs.

INGREDIENTS

timothy grass, red fescue, meadow fescue, common meadow grass, orchard grass, red fescue, tall oatgrass, bistort, perennial ryegrass, yellow oatgrass, caraway, dill, burnet, corn parsley, fennel, chicory, parsnips, yarrow, ribgrass, wild carrot

Care tips:
adapted moderate fertilisation
seeding levels:
for new seeding 30 kg / ha
for reseeding 10 kg / ha
seeding period: early spring or fall (October)
mow at initial growth height of 15 to 20 cm
sowing depth: approximately 1 cm
longevity: perennial (up to 6 years)

10 kg paper sack

PFERDEWEIDE SENSITIV

The Low-Fructan Reseeding for the Pasture

This blend contains selected grasses with reduced contents of fructan, such as red fescue and timothy which reduce the risk of arising laminitis to a minimum due to their low fructan contents.

INGREDIENTS

timothy grass, orchard grass, meadow fescue, common meadow grass, bistort, tall oatgrass, red fescue

Care tips:
adapted moderate fertilisation
seeding levels:
for new seeding 40 kg / ha
for reseeding 10 to 20 kg / ha
seeding period: early spring or fall (October)
mow at initial growth height of 15 to 20 cm
sowing depth: approximately 1 cm
longevity: perennial (up to 6 years)

10 kg paper sack

KRÄUTERMIX

Herb Seeds for the Pasture

The Kräutermix by AGROBS provides a selected blend of meadow grasses. The natural contents of minerals in the herbs and their aromatic, healing and active substances can enhance the animals' health in a natural way and make the feed tasty.

INGREDIENTS

garden burnet, caraway, ribgrass, wild carrot, chicory, fennel

Care tips:
adapted moderate fertilisation
seeding level: 1 to 2 kg / ha
seeding period: early spring or fall (October)
mow at initial growth height of 15 to 20 cm
sowing depth: approximately 1 cm
longevity: perennial (up to 6 years)

1 kg paper bag

NATURMINERAL

The Natural Supply with Minerals

based on our established
PRE ALPIN® dried green fibres

also appropriate for horses with
metabolic disorders due to its low
starch and sugar contents

reasonable combination
of organically and
inorganically bonded
trace elements

small amount needed



balanced
calcium-phosphorus-ratio

contains all essential minerals,
vitamins and trace elements

free of grain and
molasses



Commercial Form:
3 kg bucket
10 kg bucket
25 kg paper sack

NATURMINERAL

INGREDIENTS

- **PRE ALPIN®** dried green fibres
- dicalcium phosphate, in mineral form
- chalk from sea algae
- apple pomace
- linseed
- salt
- magnesium fumarate
- magnesium oxide
- oil mixture (linseed, sunflower, black cumin)
- algal flour
- yeast and yeast extracts
- apple syrup

AREAS OF USE

- for the daily basic supply with all important minerals, vitamins and trace elements
- appropriate for horses with a sensitive metabolism

FEEDING RECOMMENDATION

- 10 to 15 g per 100 kg body weight per day (horse with 600 kg = 60 to 90 g)

ANALYTIC COMPONENTS

Crude protein	7,40 %	Ca-pantothenate	600,00 mg/kg
Crude oils and fats	7,40 %	Nicotinic acid	1.200 mg/kg
Crude fibre	9,00 %	Choline chloride	280 mg/kg
Crude ash	45,00 %	Folic acid	140 mg/kg
Hydrochloric acid (indissoluble ash)	5,00 %	Biotin	10.000 mcg
		Iron**	200 mg/kg
		Copper****	450 mg/kg
Calcium	7,70 %	Manganese****	700 mg/kg
Phosphorus	2,50 %	Zinc****	4.000 mg/kg
Magnesium	1,70 %	Selenium*	10 mg/kg
Sodium	3,80 %	Cobalt**	50 mg/kg
		Iodine**	10 mg/kg
Starch	3,60 %	Technological additive:	
Sugar	3,40 %	Silica	4.000 mg/kg

Additives:

Vitamin A	50.000 I.E.
Vitamin D3	5.000 I.E.
Vitamin E	4.500 mg/kg
Vitamin B1	450 mg/kg
Vitamin B2	500 mg/kg
Vitamin B6	250 mg/kg
Vitamin B12	2.500 mcg

*organically bonded
**inorganically bonded

*A good supply
with minerals is
the essential subject
in horse nutrition.*

www.agrobs.de

WEIDEMINERAL-COBS

Well Supplied During Grazing Season

based on our established
PRE ALPIN® dried green fibres

without addition of
artificial vitamins

reasonable combination of
organically and inorganically
bonded trace elements

small dose needed, in the
practical form of a treat

contains all essential minerals
and trace elements

balanced
calcium-phosphorus-ratio



Commercial Form:
3 kg bucket
10 kg bucket
25 kg paper sack

free of grain and
molasses

also appropriate for horses with
metabolic disorders due to its
low starch and sugar contents

WEIDEMINERAL-COBS

INGREDIENTS

- **PRE ALPIN®** dried green fibres
- dicalcium phosphate, in mineral form
- chalk from sea algae
- apple pomace
- linseed
- salt
- Chlorella algae
- magnesium fumarate
- magnesium oxide
- hemp seed
- oil mixture (linseed, sunflower, black cumin)
- beetroot
- holy thistle
- yeast and yeast extracts
- apple syrup

AREAS OF USE

- for the daily basic supply with all important minerals and trace elements during the grazing season
- appropriate for horses with a sensitive metabolism

FEEDING RECOMMENDATION

- 10 to 15 g per 100 kg body weight per day
This is equivalent to 2 to 3 cobs per 100 kg body weight per day (1 cob = approximately 5 g).

ANALYTIC COMPONENTS

Crude protein	7,40 %
Crude oils and fats	7,40 %
Crude fibre	9,00 %
Crude ash	45,00 %
Hydrochloric acid, <i>indissoluble ash</i>	4,00 %
Calcium	7,70 %
Phosphorus	2,50 %
Magnesium	1,70 %
Sodium	3,80 %
Starch	3,60 %
Sugar	3,40 %
Additives:	
Iron**	200 mg/kg
Copper***	500 mg/kg
Manganese***	700 mg/kg
Zinc***	4.000 mg/kg
Selenium*	10 mg/kg
Cobalt**	50 mg/kg
Iodine**	10 mg/kg
Technological additive:	
Silica	4.000 mg

*organically bonded

**inorganically bonded

www.agrobs.de

SENIORMINERAL

The All Round Supply for Senior Horses

selenium and vitamin E,
in combination with amino acids,
support the muscle metabolism

linseed cake, yeast and selected oils
enhance digestion and lead
to a shiny coat

reasonable combination of
organically and inorganically
bonded trace elements

rich in essential amino acids
for muscle build-up and
maintenance



based on our established
PRE ALPIN® dried green fibres

appropriate for horses
with a sensitive metabolism
(e.g. Equine Cushing Syndrome,
Equine Metabolic Syndrome,
laminitis, PSSM)

free of molasses,
low in sugar



Commercial Form:
3 kg bucket
10 kg bucket
25 kg paper sack

SENIORMINERAL

INGREDIENTS

- **PRE ALPIN®** dried green fibres
- alfalfa fibre
- linseed cake
- yeast and yeast extracts
- oil mixture (linseed, sunflower, black cumin)
- carrot
- beetroot
- rosehip
- algal flour
- apple syrup

AREAS OF USE

- for the daily basic supply with all important minerals, vitamins, trace elements and amino acids
- for old and aging horses
- also appropriate for horses with increased need (e.g. during growth phase, in case of increased stress during training phases or increased performance rates)
- appropriate for horses with a sensitive metabolism

FEEDING RECOMMENDATION

- 10 to 15 g per 100 kg body weight per day (horse with 600 kg = 60 to 90 g)

ANALYTIC COMPONENTS

Crude protein	10,00 %
Crude oils and fats	4,50 %
Crude fibre	8,00 %
Crude ash	45,00 %
Hydrochloric acid (<i>indissoluble ash</i>)	2,20 %
Calcium	13,50 %
Phosphorus	6,00 %
Magnesium	1,50 %
Chloride	0,12 %
Sodium	0,30 %

Starch	0,90 %
Sugar	2,10 %

Lysine	2,80 %
Methionine	2,50 %
Cystine	0,10 %
Threonine	0,30 %

Additives:	
Vitamin A	100.000 I.E.
Vitamin D3	10.000 I.E.
Vitamin C	20.000 mg/kg
Vitamin E	15.000 mg/kg
Vitamin B1	900 mg/kg
Vitamin B2	600 mg/kg
Vitamin B6	600 mg/kg
Vitamin B12	3.000 mcg
Choline chloride	500 mg/kg

Folic acid	200 mg/kg
Biotin	15.000 mcg
Iron****	500 mg/kg
Copper****	1.000 mg/kg
Manganese****	1.500 mg/kg
Zinc***	6.000 mg/kg
Selenium****	15 mg/kg
Cobalt**	50 mg/kg
Iodine**	10 mg/kg

*organically bonded
**inorganically bonded

A good supply with minerals is the essential subject in horse nutrition. Our mineral feeds provide your horse with highly-disposable vital substances and promote health and wellbeing.

www.agrobs.de



SELEN PUR

Specifically for Balancing a Selenium Deficiency

highly effective combination of fast-acting sodium selenite and organically bonded selenium



with Vitamin E for ideal absorption

free of grain and molasses, appropriate for horses with a sensitive metabolism

the convenient pellet form and the tasty recipe with Prenatura® dried green fibres and linseed make feeding nice and easy

ZINK PUR

Specific Zinc Supply for Skin, Coat and Immune System

pure organically bonded zinc



especially appropriate as cure during coat changing in spring and fall

free of grain and molasses, appropriate for horses with a sensitive metabolism

the pellet form and the particularly tasty recipe make feeding nice and easy



Commercial Form:
700 g container

INGREDIENTS

- Prenatura® dried green fibres
- linseed

AREAS OF USE

- specifically for balancing a selenium deficiency
- for improving the muscle metabolism
- for the immune system

FEEDING RECOMMENDATION

5 g per 100 kg of body weight / day
Large horses: 30 g per day (600 kg body weight)
Small horses: 20 g per day (400 kg body weight)
(1 heaping measuring spoon = approximately 20 g)

FEEDING NOTE

Due to its higher content of selenium compared to other single feeds, this supplementary feed may only be dispensed in accordance with the Feeding Recommendation. Please contact your veterinarian in order to avoid an oversupply. Not suitable for permanent feeding.

ANALYTIC COMPONENTS

Crude protein	7,90 %
Crude oils and fats	1,50 %
Crude fibre	20,30 %
Crude ash	8,30 %
Selenium <i>organically bonded</i>	20 mg/kg
Sodium selenite <i>inorganically bonded</i>	20 mg/kg
Vitamin E	50.000 mg/kg

INGREDIENTS

- Prenatura® dried green fibres
- linseed

AREAS OF USE

- specifically for balancing a zinc deficiency
- for skin, coat and hoofs
- for the immune system

FEEDING RECOMMENDATION

5 g per 100 kg of body weight / day
Large horses: 30 g per day (600 kg body weight)
Small horses: 20 g per day (400 kg body weight)
(1 level measuring spoon = approximately 20g)

FEEDING NOTE

Due to its higher content of zinc in comparison to other single feeds, this supplementary feed may only be dispensed in accordance with the Feeding Recommendation.

ANALYTIC COMPONENTS

Crude protein	8,80 %
Crude oils and fats	1,70 %
Crude fibre	23,20 %
Crude ash	9,30 %

Zinc *organically bonded* 12.000 mg/kg



Commercial Form:
800 g container

SPURENELEMENTE PUR

Specific Supply with Trace Elements

ensures the supply with essential trace elements for many important metabolic functions

reasonable combination of organically and inorganically bonded trace elements

no added sugar, artificial flavouring and preservatives



nature-based and puristic composition based on warm air-dried meadow grasses and herbs as well as linseed

free of grain, also appropriate for horses with a sensitive metabolism



Commercial Form:
800 g container

INGREDIENTS

- Prenatura® dried green fibres
- linseed

AREAS OF USE

- specifically for balancing a trace element deficiency
- after illness in order to support convalescence
- for supplementation in case of an increased need (e.g., growth, increased performance, stress, chronic illnesses)

FEEDING RECOMMENDATION

5 g per 100 kg of body weight / day
Large horses: 30 g per day (600 kg body weight)
Small horses: 20 g per day (400 kg body weight)
(1 level measuring spoon = approximately 20 g)

FEEDING NOTE

Due to its higher content of trace elements in comparison to other single feeds, this supplementary feed may only be dispensed in accordance with the Feeding Recommendation. Let our feeding specialists advise you.

ANALYTIC COMPONENTS

Crude protein	12,60 %
Crude oils and fats	2,60 %
Crude fibre	20,10 %
Crude ash	14,60 %
Zinc, <i>organically bonded</i>	10.000 mg/kg
Manganese, <i>organisch gebunden</i>	1.500 mg/kg
Copper, <i>organically bonded</i>	1.200 mg/kg
Cobalt, <i>inorganically bonded</i>	50 mg/kg
Selenium <i>organically bonded</i>	10 mg/kg
Sodiumselenit <i>inorganically bonded</i>	10 mg/kg
Iodine, <i>inorganically bonded</i>	10 mg/kg

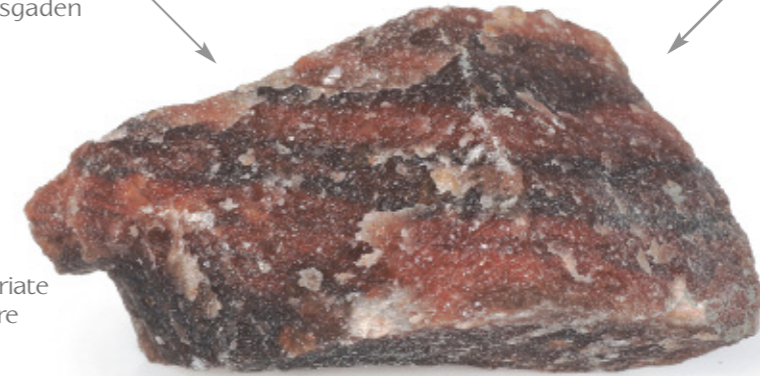
BAVARIA STEINSALZ

Natural Rock Salt from the Depths of the Bavarian Mountains

from the famous Bavarian salt mine Berchtesgaden

100 % natural

high weather resistance, appropriate for stall and pasture



contains many further native minerals in addition to sodium chloride

mined especially gently by hand

favourable life cycle assessment due to short transportation routes

Commercial Form: 5 to 5.5 kg cardboard box, 25 kg fabric sack

The regular intake of salt is essential for horses and, e.g. in form of licking stones, balances electrolyte deficits. Bavaria Steinsalz naturally prevents a deficit of electrolytes, sodium and chloride.

Bavaria Steinsalz comes from the depths of the Bavarian mountains as natural ancient salt. There it was stored for millions of years, protected from today's environmental influences. In the salt mine Berchtesgaden it is gently mined by hand for AGROBS.

In comparison to industrially processed salt, this untreated ancient salt is rich in natural minerals and provides the ecological and regional alternative to salt licking stones from foreign countries.

INGREDIENTS

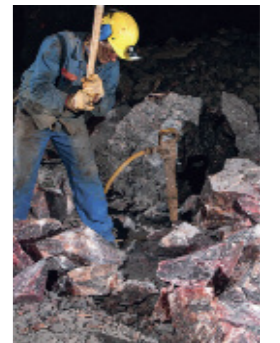
- 100 % natural rock salt
- ingredient: 35 % sodium

AREAS OF USE

- for an adequate supply with sodium chloride
- for balancing the electrolyte balance

FEEDING RECOMMENDATION

offer for free intake, however out of reach of foals respectively young horses in order to avoid an excessive intake





For best friends – a whole lifetime

AGROBS®

WiesenBussi

The healthy treat

grain-free, appropriate for horses with a sensitive metabolism



low in starch and sugar



easy to dispense



← the high-quality basis of grasses and herbs, refined with root vegetables and fruits, make WiesenBussi a nature-based and species-appropriate treat

← the healthy alternative, without flavour enhancers and artificial additives



Commercial Form:
1 kg bag
10 kg bucket
25 kg paper sack

INGREDIENTS

- PRE ALPIN® dried green fibres
- beet slices, parsnips, carrots
- apple fibres
- malt yeast aroma
- herbs (holy thistle, blueberry leaves, rosehip, sheperd's purse, stinging nettle)
- linseed oil, sunflower oil, both cold-pressed
- chalk from sea algae
- beetroot and honey

AREAS OF USE

- the healthy alternative to conventional treats
- ideal treat substitute also in obese ponies and horses in small amounts

ANALYTIC COMPONENTS

Crude protein	9,60 %
Crude oils and fats	3,20 %
Crude fibre	19,50 %
Crude ash	9,00 %
Calcium	2,20 %
Phosphorus	0,40 %
Sodium	0,08 %
Starch	3,70 %
Sugar	5,80 %



Feeding Advice

How do I feed my horse correctly?
Does the combination of feed meet my horse's needs?
Many questions arise concerning a healthy and species-appropriate horse nutrition.

Our expert team will gladly advise you:

*Online: www.agrobs.de > service > fuetterungsberatung
Consultation Hotline: +49 (0) 8171.418048-60*

You can reach us during the following hours:
Mon. 8 a.m. to 4 p.m. | Tue. - Wed. 8 - 12 | Thur. 1 p.m. to 4 p.m. | Fri. 8 - 12

IMPRINT:

AGROBS GmbH, Printed in Germany, 2017 All rights reserved.
Changes, errors, printing errors and sentence errors reserved.
Variation in colour and dimension meet the common tolerances.
Copies, also partially, are only permitted after approval of AGROBS GmbH.

photographs: title photo: Christiane Slawik | Claudia Rahlmeier | Claudia Becker | alka-mediengestaltung GmbH
Stefanie Gassner | Fotolia | Shutterstock | Panther-Media
editors: Florian Berger | Simon Berger | Theresa Bockhorni | Dr. Katharina Boes | Barbara Keßler | Katharina Bromberger
translations: Katharine Barske
conception: Theresa Bockhorni | Claudia Becker
art direction: Claudia Becker
print: Wiesendanger Medien GmbH | Dr.-Schalk-Str. 27 | 82418 Murnau



AGROBS[®]
For a healthy horse life

 **AGROBS**® DISTRIBUTION PARTNER

A detailed directory of our distributors can be found on www.agrobs.de

 **AGROBS**®

AGROBS GmbH · Angerbreite 27 · 82541 Degerndorf at Lake Starnberg
telefon +49(0)8171.418048-0 · fax +49(0)8171.418048-48 · email info@agrobs.de

www.agrobs.de