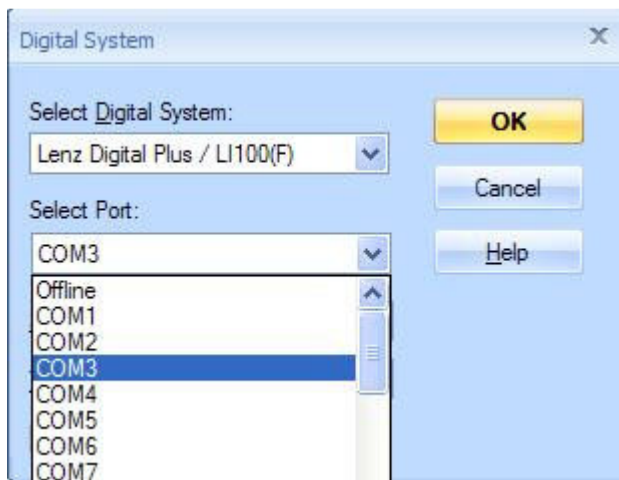


INTERFACE

- download driver: <http://www.ftdichip.com/Drivers/VCP.htm>
- unzip file to new folder.
- connect interface to DCC station. Green LED lights.
- connect PC via USB cable (printer cable). Another green LED lights. Windows detects the new hardware, navigate them to your Folder to install driver. That is repeated twice.

Train Controller setup:



select port which you use!!!

JRMI setup:

Manufacturer	Lenz
Connection	Lenz LI100
Baud	9600

- the XpressNet address is 29
- first address of s88 module is 65, outputs 1-8. The next is 66.

