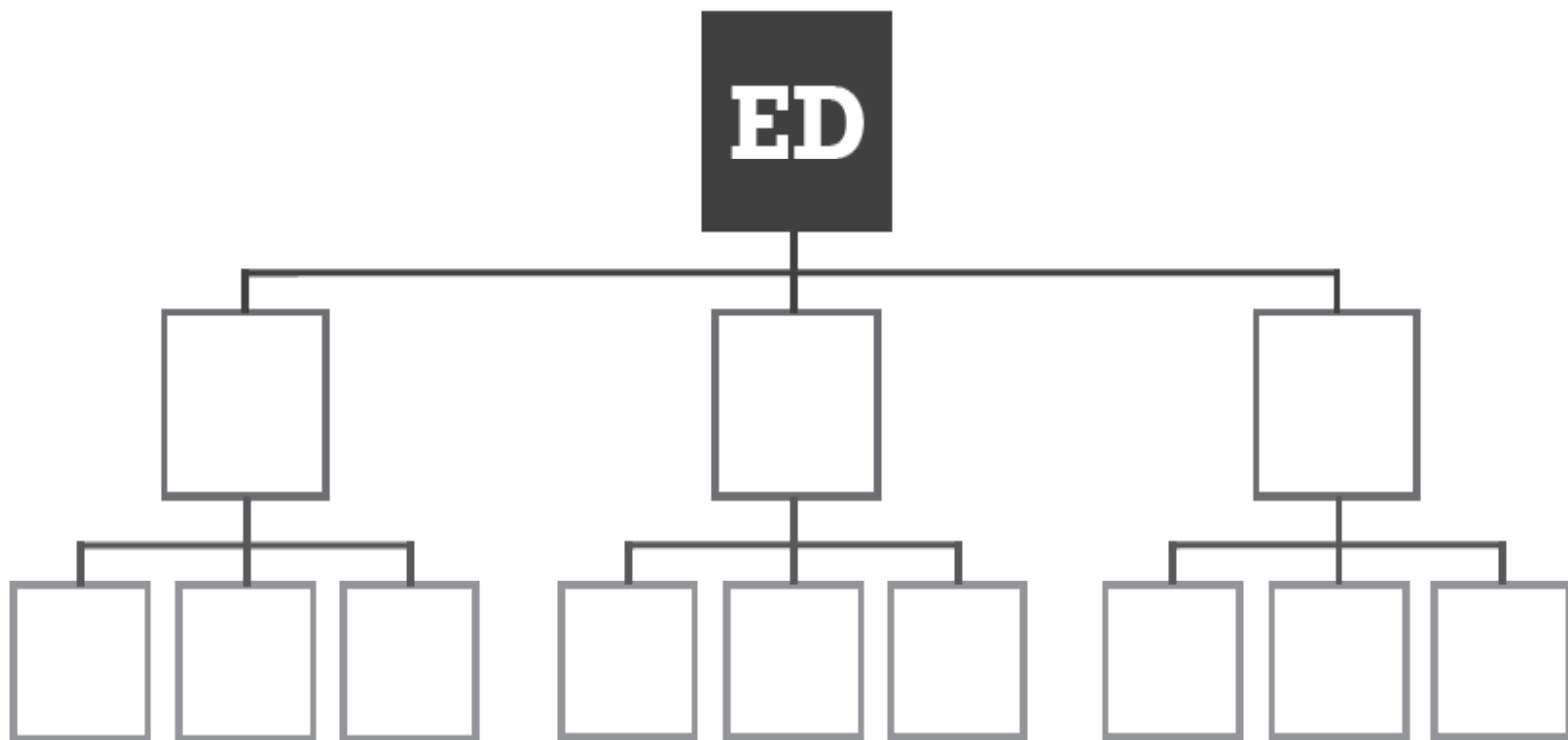


- » **COACH** & Develop Leaders
- » Create Satisfied Customers
- » Build Lifestyles of Freedom

My Executive Director Team

C3 to **C3** to do **PC** = **ED**



Keep Track of Your Progress!

When you recruit a sales team member,
fill in their position with their name.

Bring your worksheet to Orlando!

*PC = 5 Personal Sales Per Associate.
Total Organizational Sales = 65.