



# COVID-19 RECOVERY PROGRAM

Getting back to business.

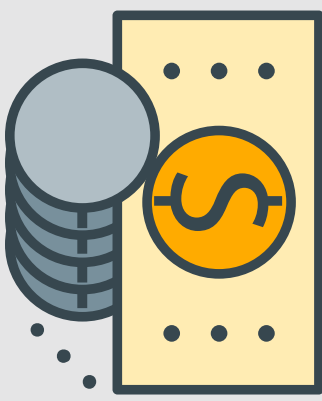


1

## BUSINESS ASSESSMENT

A regional economic development partner conducts a 90-minute virtual business assessment with your company. Data will inform questions such as:

- What does your company need to rebuild?
- Where does the business stabilize?
- How can the business grow and sustain?



2

## CASH FLOW CHECK

Depending on the status of your business, a high-level or in-depth cash flow analysis is conducted by the appropriate organization, such as NWIRC, SBDC, or Steel Valley Authority



3

## TACTICAL ACTION PLAN

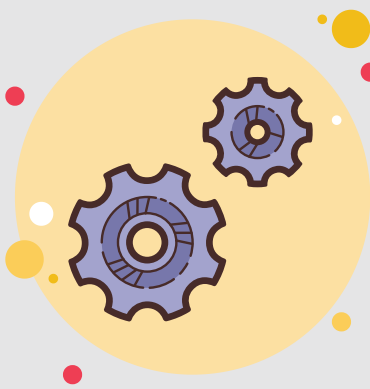
A 1/2 day planning session with your company, to develop immediate action steps, as well as project recommendations to the appropriate regional organizations for a 3, 6, or 12-month plan



4

## BRIEFING

30-minute virtual meeting with your company to review recommendations in the Tactical Action Plan



5

## IMPLEMENTATION

If your company moves forward with recommendations, referrals are made to the partner who can best assist and also scout available funding. Examples of these projects may include:

- customer diversification
- market resource
- sales planning
- automation
- process improvements
- training

To get started, contact your local economic development partner or CRP Program Coordinator, Susan Hileman ([shileman@nwirc.org](mailto:shileman@nwirc.org))