



# Food Security in Lower Income Countries: 2012 to 2022

Shahla Shapouri and Stacey Rosen

Economic Research Service, USDA






# Overview of Presentation

- The FSA Model
- Food Security Situation
- Food Security Outlook
- Conclusions





# FSA Model and Methodology





# Methodology

The ERS food security assessment (FSA) model estimates and projects food availability and access in **76** countries...





...in 4 world regions

- **Sub-Saharan Africa**
- **Asia**
- **Latin America and the Caribbean**
- **North Africa**





# Food Security Indicators

*Food gaps* and the *number of food-insecure people* are projected for **2012-2022.**





## Distribution gap

This gap measures the amount of food needed to increase consumption in food-deficit income groups to a level to meet the nutritional target (2,100 calories/person/day).





# Food gap analysis

This gap analysis is used as a basis to estimate the number of food-insecure people.







# Results and Implications



# The number of food-insecure people in 76 countries (million)

	Total	Region			
		Asia	LAC	NA	SSA
2011	814	395	46	0	373
2012 Projection	802	398	48	0	357
Change (%)	-1.5	+0.8	+4.3	0	-4.3



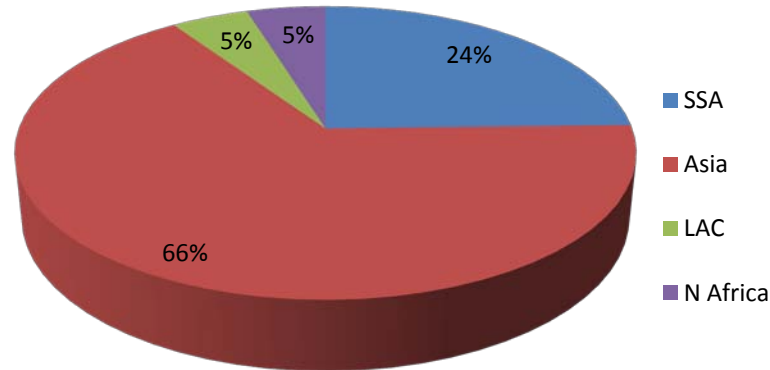
# Distribution gaps in 76 countries (million tons)

	Total	Region			
		Asia	LAC	NA	SSA
2011	16.2	4.5	1.05	0	10.7
2012 Projection	17.1	5.5	1.13	0	10.5
Change (%)	5.6	+22.4	+7.2	0	-1.8

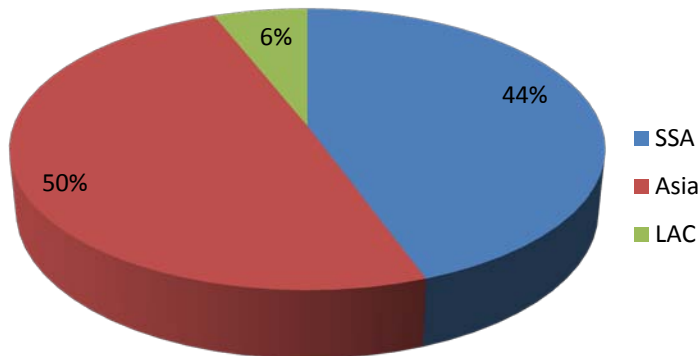


# Population (total and food-insecure) and food gap shares by region, 2012

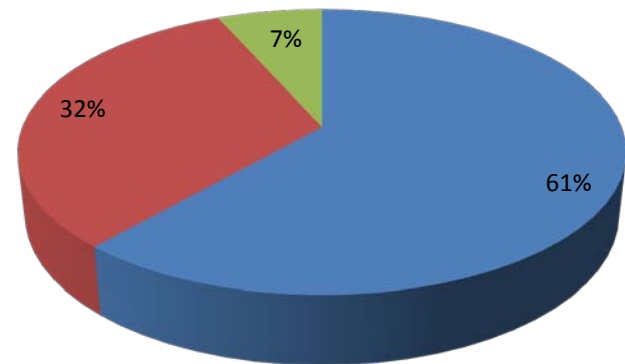
## Population share



## Food-insecure people share



## Food gap share





# Growth Rates of Key Variables

2000-10

Grain area      Grain yield      Population  
-----*percent per year*-----

Asia	2.39	2.19	1.22
LAC	2.14	1.57	1.47
SSA	1.09	1.07	2.52
N Africa	1.83	3.62	1.38





# Grain Production: Coefficient of variation 1990-2011

## Most vulnerable

Central Africa Republic  
Eritrea  
Lesotho  
Sierra Leone  
North Korea  
Yemen

*percent*

31.5  
62.5  
45.3  
42.6  
39.8  
22.0

## Higher performers or least vulnerable

Ghana  
Malawi  
Mozambique  
Sri Lanka  
Peru  
Tunisia

*percent*

25.4  
42.1  
45.9  
22.9  
32.7  
39.6





## Most progress during last decade

- ***Latin America***
  - Bolivia
  - Dominican Rep
  - Nicaragua
  - Peru
- ***Asia***
  - Cambodia
  - Laos
  - Tajikistan
- ***Sub-Saharan Africa***
  - Angola
  - Chad
  - Ethiopia
  - Malawi
  - Mozambique
  - Tanzania





# 2022 projections







# Food security outlook

- The number of food-insecure people is projected to ***increase by 4.6 percent*** to 839 million over the next decade.
- The share of population that is food insecure is projected to **fall from 24% to 21%**.
- The distribution gap is projected to remain relatively unchanged.



# The number of food-insecure people in 76 countries (million)

	Total	Region			
		Asia	LAC	NA	SSA
2012	802	398	48	0	357
2022	839	388	41	0	411
Change (%)	+4.6	-2.5	-14.6	0	+15.1



# Distribution gaps in 76 countries (million tons)

	Total	Region			
		Asia	LAC	NA	SSA
2012	17.1	5.5	1.13	0	10.5
2022	17.2	3.9	0.81	0	12.4
Change (%)	+0.7	-27.9	-28.0	0	+18.6





# Share of Population Food-Insecure

	1995	2000	2005	2010	<b>2012</b>	<b>2022</b>
	----- <i>percent</i> -----					
<b>Asia</b>	35	36	32	22	<b>18</b>	<b>15</b>
<b>LAC</b>	55	48	39	29	<b>30</b>	<b>22</b>
<b>SSA</b>	61	58	47	39	<b>42</b>	<b>38</b>
<b>TOTAL</b>	40	40	34	26	<b>24</b>	<b>21</b>



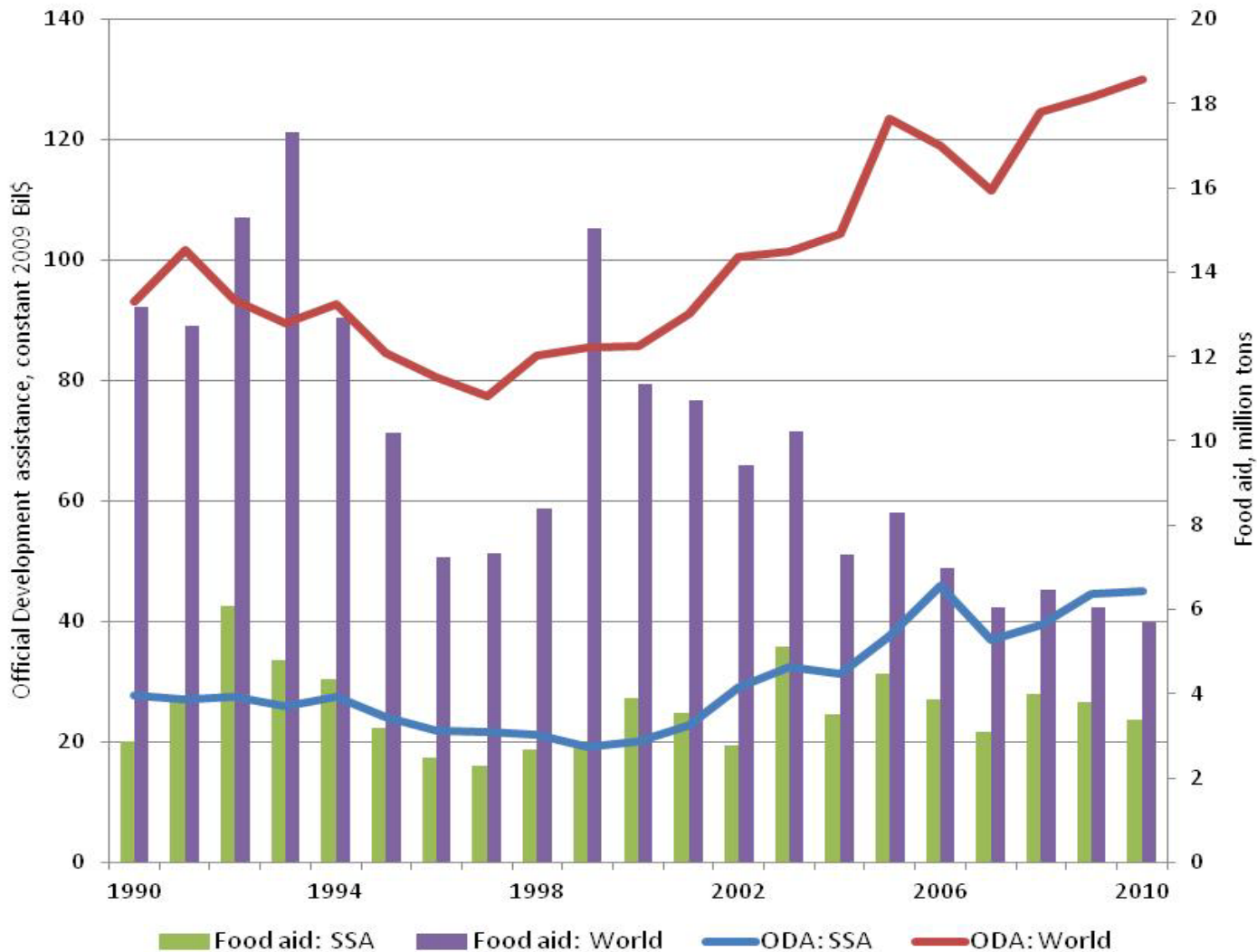


# Reasons to be optimistic

- Governments have adopted a variety of policies to boost food production and support consumers.
- Income growth is projected to be strong across regions.
- Terms of trade remain favorable for most countries.
- International support remains strong.



# Official Development Assistance and Food Aid





# Thank You...

For more information on our work,  
please visit our website:  
[http://www.ers.usda.gov/Briefing/  
GlobalFoodSecurity/](http://www.ers.usda.gov/Briefing/GlobalFoodSecurity/)

