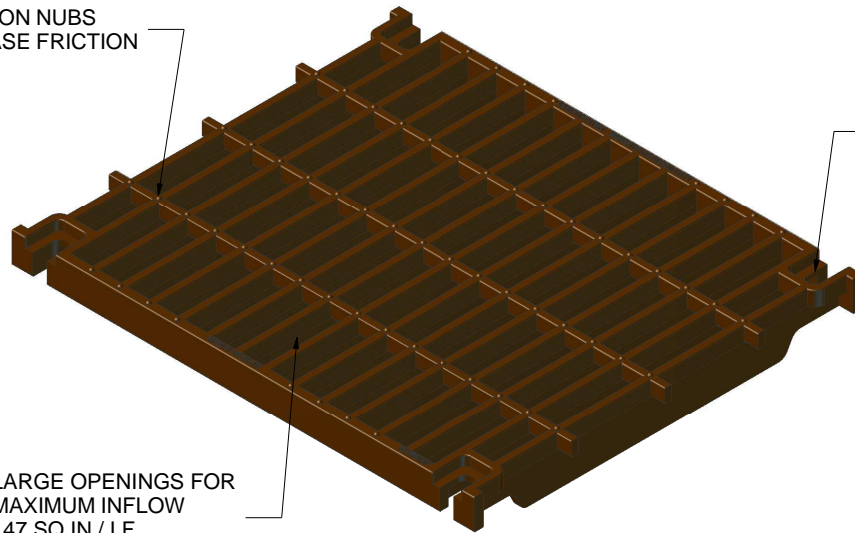


# 20" DUCTILE IRON SLOTTED GRATE

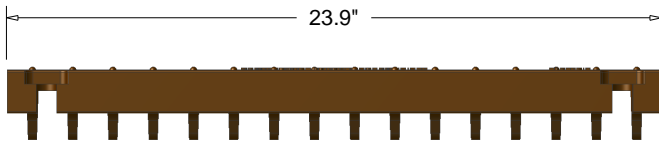
TRACTION NUBS  
INCREASE FRICTION

4 CORNER LOCKING  
FOR MAXIMUM LONGITUDINAL  
AND VERTICAL RESTRAINT

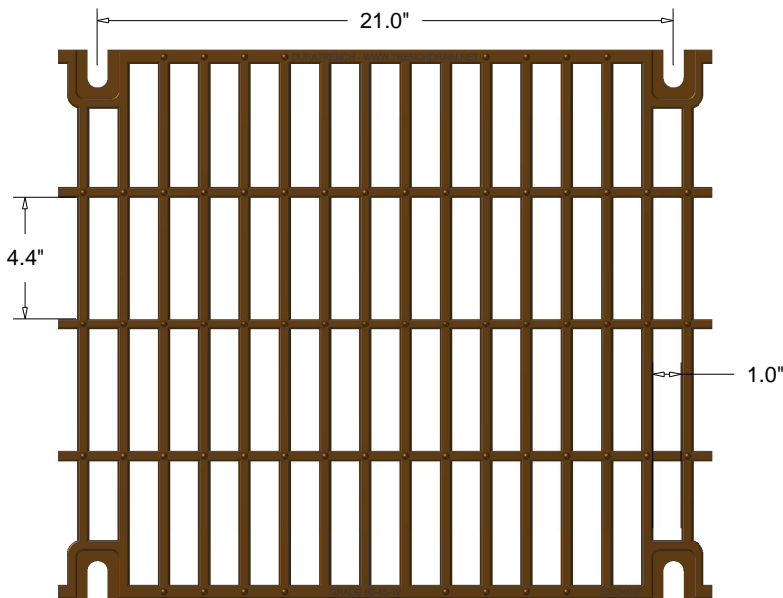
LARGE OPENINGS FOR  
MAXIMUM INFLOW  
147 SQ IN / LF  
OPEN AREA



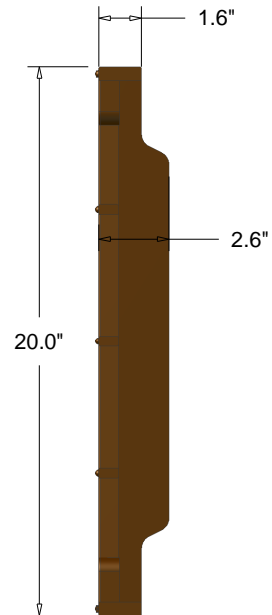
**ISOMETRIC VIEW**



**SIDE VIEW**



**TOP VIEW**



**END VIEW**

MATERIAL	DUCTILE IRON 65-45-12
COATING	UNCOATED
LOCKING	4 - 1/2" STAINLESS STEEL BOLT
LOAD RATING	EXCEEDS FAA AC150/5320-6E AIRCRAFT LOADING
ADA / HEEL GUARD	NO

STANDARD TOLERANCES  
 0 = +/-0.25  
 0.0 = +/-0.25  
 0.00 = +/- 0.13



574c Industrial Way N.  
 Dallas, GA 30132  
 PH: 770-505-6575  
[www.trenchdrain.net](http://www.trenchdrain.net)