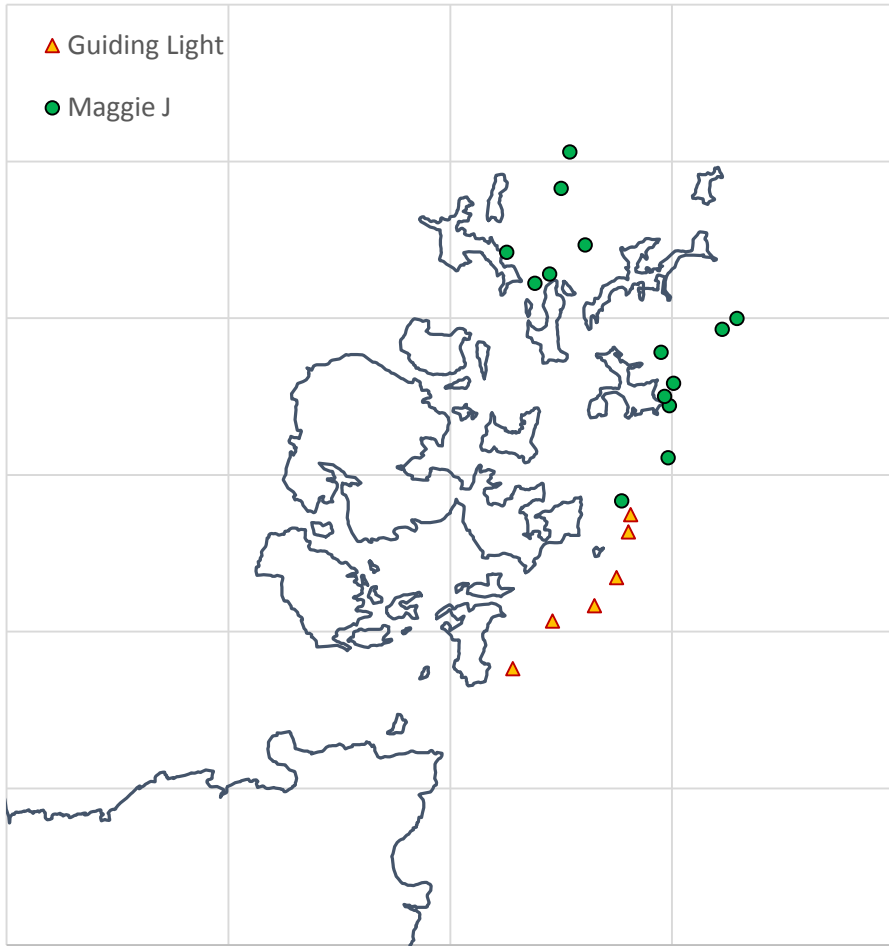


Scallop dredge surveys

2014

▲ Guiding Light

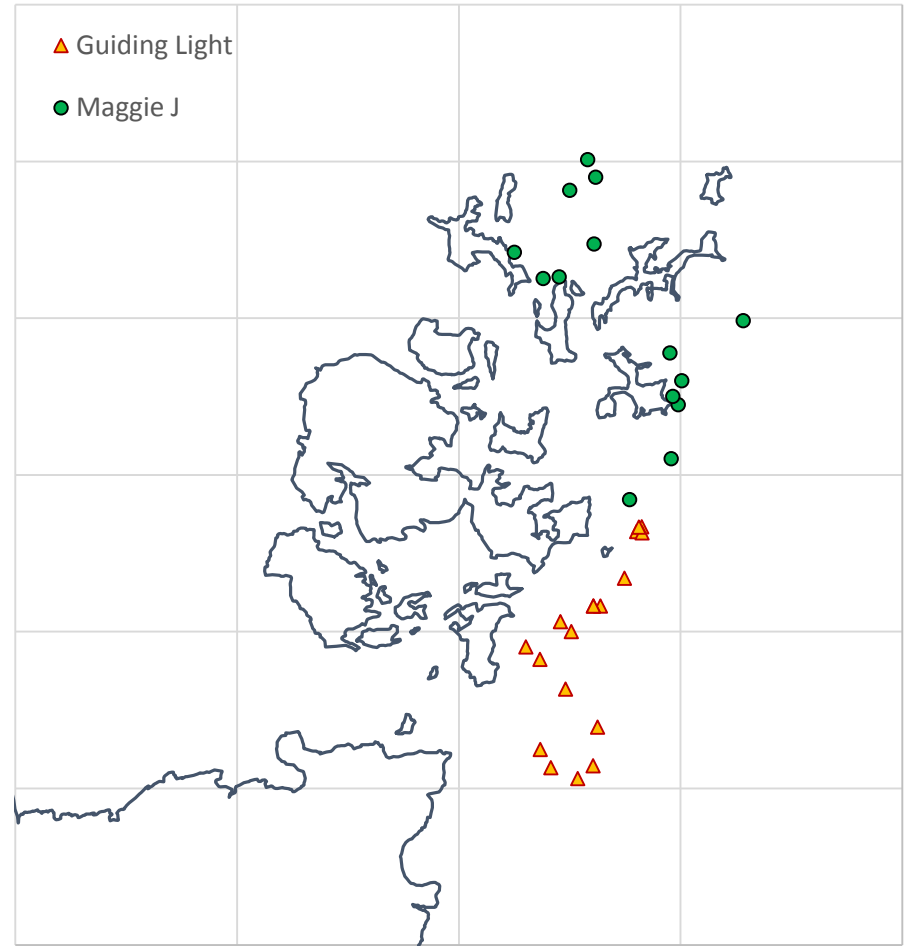
● Maggie J



2016

▲ Guiding Light

● Maggie J



Scallop survey effort

Year	Vessel	No. tows	Area swept (m ²)
2014	Guiding Light	6	21,168
	Maggie J	14	34,667
	Total:	20	55,835
2016	Guiding Light	18	63,505
	Maggie J	14	39,887
	Total	32	103,393

Scallop catch rates

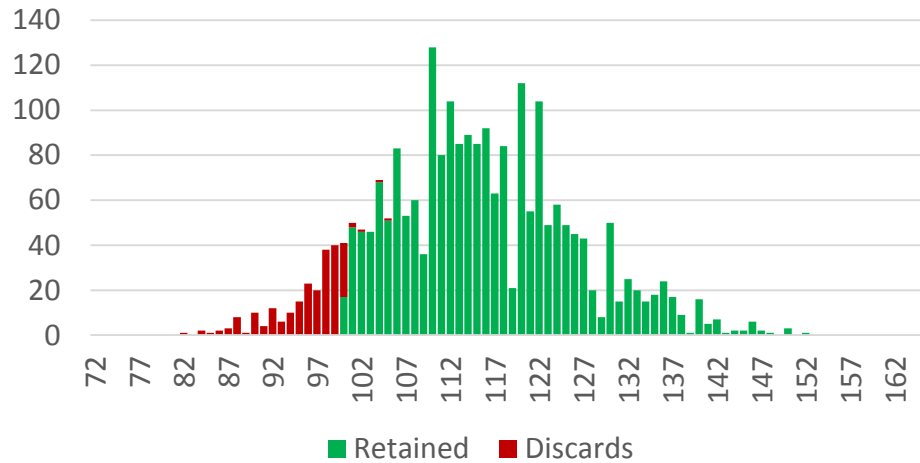
Year	Vessel	Retained (kg/100m ²)	Retained (N/100m ²)	Discarded (kg/100m ²)	Discarded (N/100m ²)
2014	Guiding Light	2.05	10.02	0.14	1.06
	Maggie J	1.39	5.77	0.14	1.00
	Total:	1.64	7.38	0.14	1.03
2016	Guiding Light	1.40	6.44	0.07	0.45
	Maggie J	0.54	2.53	0.04	0.38
	Total	1.07	4.92	0.06	0.42

Change in catch rates 2014-2016

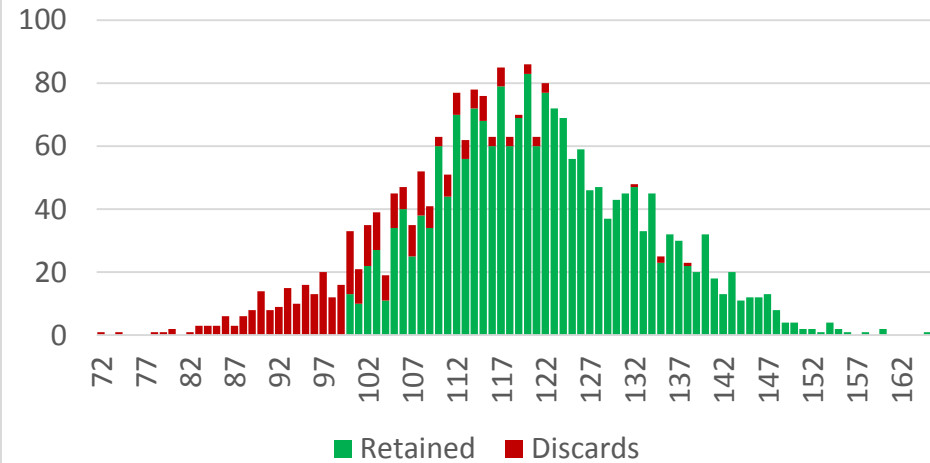
Vessel	Retained (kg/100m ²)	Retained (N/100m ²)	Discarded (kg/100m ²)	Discarded (N/100m ²)
Guiding Light	-32%	-36%	-48%	-58%
Maggie J	-61%	-56%	-70%	-62%
Total:	-35%	-33%	-57%	-59%

Size composition (shell length, mm)

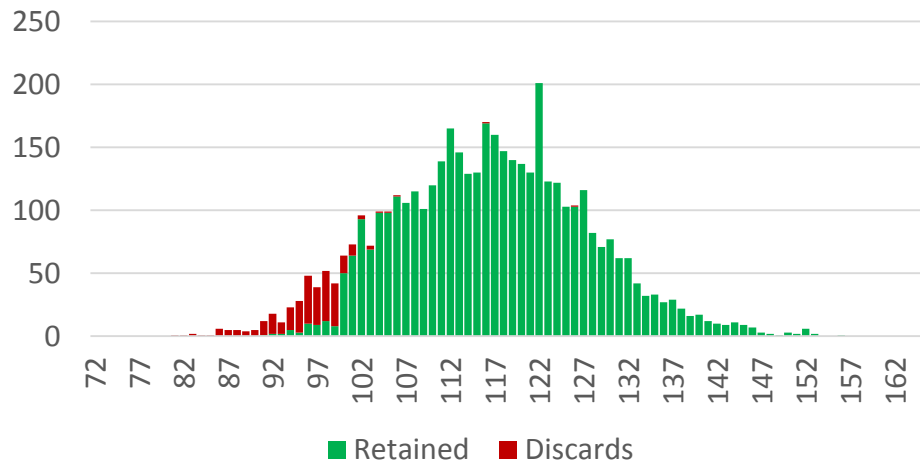
Guiding Light 2014



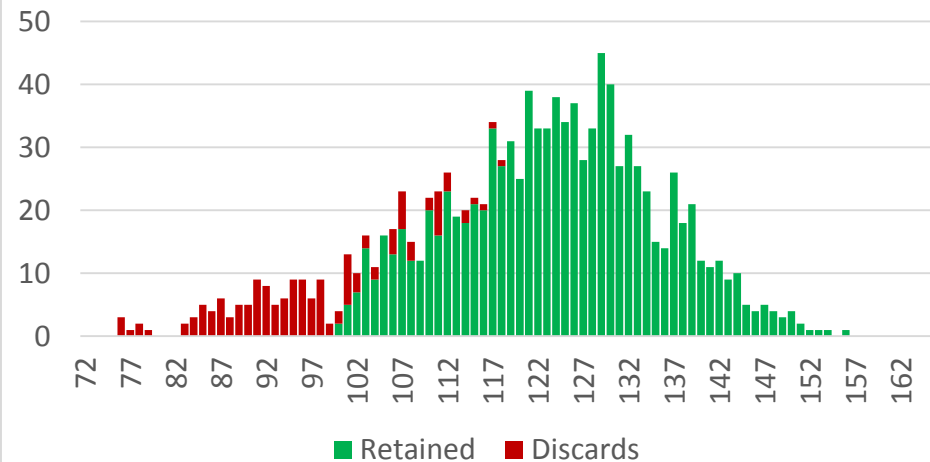
Maggie J 2014



Guiding Light 2016



Maggie J 2016



Conclusions...?

- Survey catch rates of commercial scallops have declined by a third or more on the dredged grounds to the east of Orkney
- Greater declines seen in survey catch rates of sub-legal scallops – more than a half
- Length composition of catches has not altered dramatically
- More detailed analysis needed to pick this apart in terms of location, mortality and recruitment processes