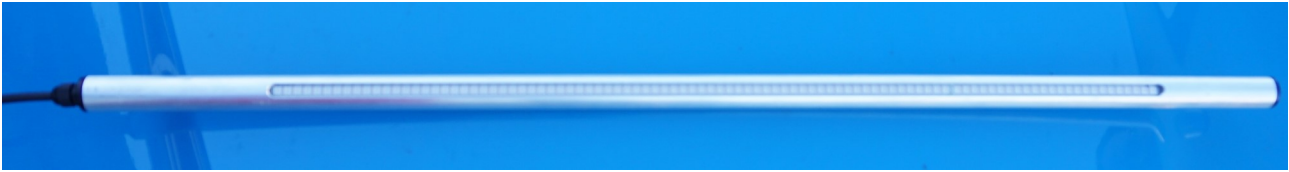


Star Steering



This novel system frees the helm from having to peer down at a compass. The display bar is mounted, ideally, at horizon level and maintains a 'fixed' point to steer for. This means the person steering can see the direction to steer while allowing continuous look-out.

Can be set to heading or direction or way-point (2K version).

Can be used directly with A5022 fluxgate compass.

FEATURES

- A 'Star to Steer By'
- Horizon-level Helming Aid
- Helps keep horizon look-out
- IP68
- NMEA-0183 for easy compass interface
- 2K version (A5605)
- 8-30V Supply
- Easily mounted
- 660mm display
- Auto-brightness
- Variable width adjustment
- Remote control version (-R)

ABSOLUTE MAXIMUM RATINGS

PARAMETER	DESCRIPTION	NOTES	CONDITIONS	VALUE	UNIT
Q _{STOR}	Storage Temp Range			-20 to +100	°C
Q _{OPER}	Operating Temp Range			-20 to +65	°C
	Shock Resistance		Single impact	±200	G
	Climate Test		+71°C, 95% Humidity -20°C, 85% Humidity	6	Hours
V _{CC}	Supply Voltage			30	Vdc
P _{MAX}	Operating Pressure Range			-2 to +2	Bar

MECHANICAL

DESCRIPTION	NOTES	CONDITIONS	TYPICAL VALUE	UNIT
Dimensions			See Drawing	
Sensor Mounting			Horizontal	
Cable Length			4	m
Weather Resistance			Sealed to IP68	

ORDER INFORMATION

PART	DESCRIPTION
A5600	0183 SteeringStar

ELECTRICAL CHARACTERISTICS AT 20°C

PARAMETER	DESCRIPTION	NOTES	MIN	TYP	MAX	UNIT
V _{CC}	Supply Voltage		8	12	30	Vdc
I _{CC}	Current consumption		25	50	200	mA

DATA

The input to the display is a standard NMEA-0183 sentence which can be configured to be one of several standard forms: Eg:
 \$HCHDG,hhh.h,,,,*ss<CR><LF>
 or \$HCHDT,hhh.h,T<CR><LF>
 where hhh.h represents the heading. Serial output is RS422, 4800 Baud, 8 data bits, 1 stop bit. Other commands are listed in the Manual.

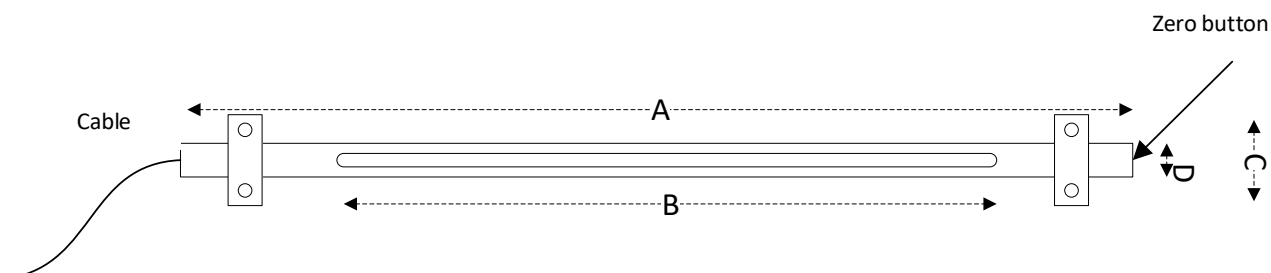
CONNECTIONS

Terminal	Type	Function
1	Power	+8 to +30V
2	Signal	NMEA IN+
3	Signal	NMEA IN-
4	Power and Signal	GROUND 0V

SETUP

The A5600 is installed in the boat and then the boat is swung from side to side. The gain adjustment is set so that the 'star' appears stationary when viewed from the helm position. The ideal position is between 2 and 5m away.

MOUNTING



A	910mm	Total length of tube
B	668mm	Length of display
C	50mm	Width of mounting blocks supplied
D	25mm	Diameter of tube