



**Big Brothers Big Sisters**  
of Metropolitan Detroit



**2015**

**ANNUAL REPORT**

**Big Brothers Big Sisters of Metropolitan Detroit**

*To the world you may be one person, but to one person you may be the world.*

*Dr. Seuss*

**Big Brothers Big Sisters is the largest evidence-based organization**

**837**

**YOUTH SERVED**

378 in community settings

459 in schools

Youth matched with professionally supported mentors

**BIG**

**FUTURES**

More social acceptance

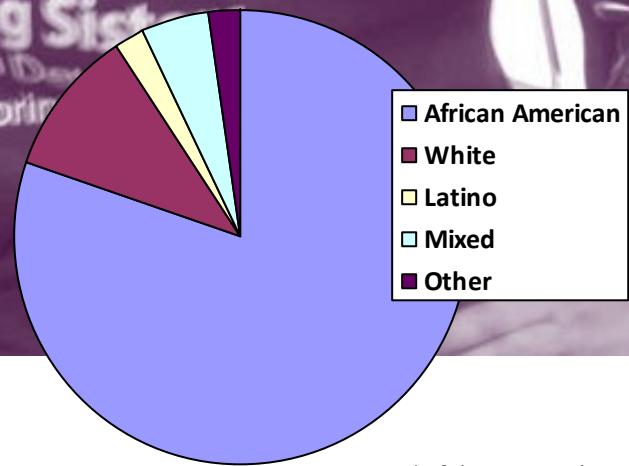
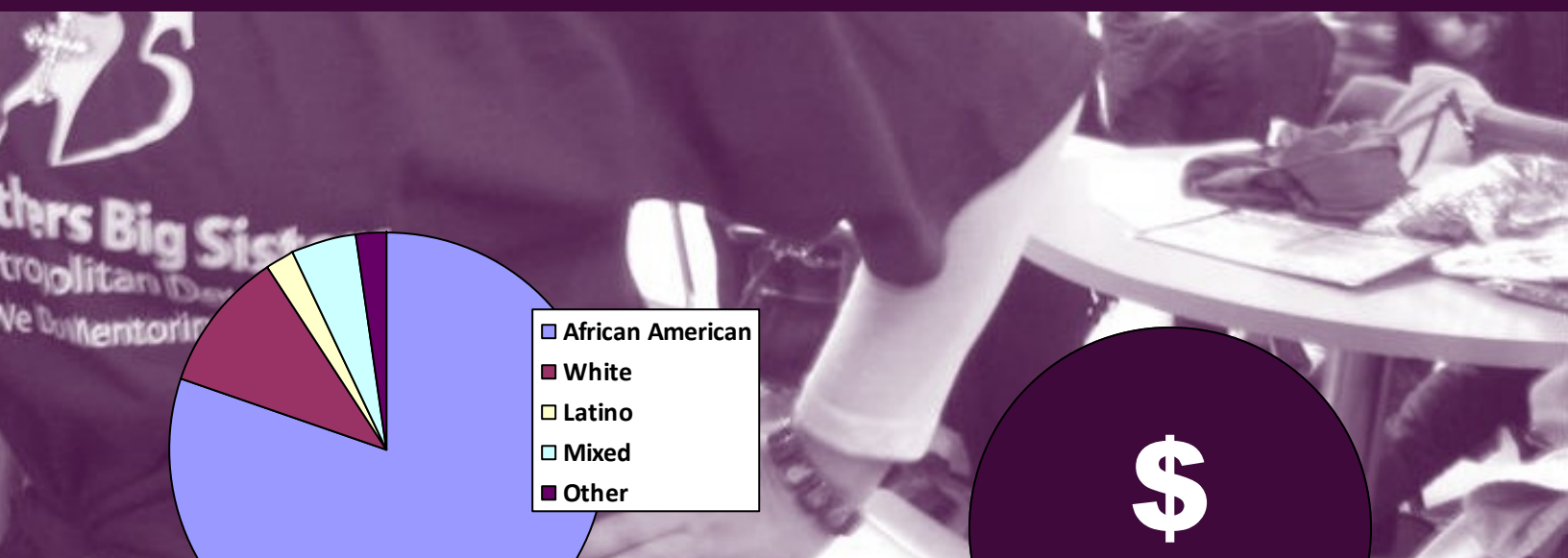
Educational success

Reduction in risky behavior

Improved youth outcomes



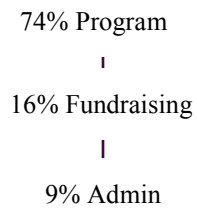
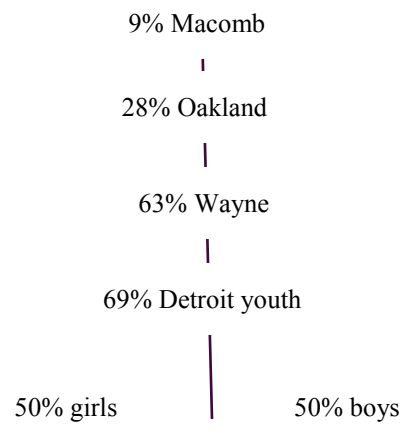
one-to-one mentoring organization in metropolitan Detroit.



\*of those reporting race



**SUSTAINABILITY**



Revenue  
\$1,507,818

Expenses  
1,355,702

\*2015 Audit and I990 available. Please call 313-309-0500.

Who did we serve?\*

How did we do it?\*



## OUR VISION

To see all children achieve success in life.

## OUR MISSION

To provide children facing adversity with strong and enduring, professionally supported one-to-one mentoring relationships that will change their lives for the better, forever.

## OUR 2015 BOARD OF DIRECTORS

**Tish King, Chair**

Michael Bly, Tobin Williams, Richard Hampson, LaShanda Thomas, Joel Gurman, Terry McElroy, Mark Albrecht, Jeffrey Collins, Jenna Lamb, Patrick Botsworth, Kendra Bittell, Rose Glenn, Steven Shekell, Dale Kirk, James Young, Richard Chaney, Michele Samuels, Allen Coleman, Richard Chaney

## OUR PRESIDENT AND CEO

Jeannine Gant

**Big Brothers Big Sisters of Metropolitan Detroit**

**7700 Second Ave, Ste 602**

**Detroit, MI 48202**

**313-309-0500**

**[www.bbbsdetroit.org](http://www.bbbsdetroit.org)**

### 2015 CORPORATE AND FOUNDATION FUNDERS

Office of Juvenile Justice and Delinquency Prevention  
Big Brothers Big Sisters of America  
United Way of Southeastern Michigan  
The Skillman Foundation  
Bank of America Foundation  
AAA Michigan  
Blue Cross Blue Shield of Michigan  
Blue Care Network  
Bank of America  
Strategic Staffing Solutions  
Delphi Automotive  
General Motors Foundation  
YMCA of Metropolitan Detroit  
Comerica Bank  
Citizens Bank  
PNC Bank  
DTE Foundation  
Comcast  
Fiat Chrysler Automotive  
Ally Financial  
Helen L. Kay Charitable Trust  
United Jewish Fund  
Ralph and Winifred Polk Foundation  
Jacob Best Foundation

Ernst and Young  
UHY Advisors  
UAW  
Quicken Loans  
The Thompson Foundation  
Greektown Casino  
Henry Ford Health System  
Health Alliance Plan  
BASF  
Carmeuse Foundation

### 2015 REVENUE SOURCE %

Corporate donations:	5%
Federal:	13%
BBBSA:	14%
Foundations:	17%
Individuals:	3%
United Way:	10%
Events:	32%
Grants (non federal):	5%
Misc, i.e. fee for service	2%



**Big Brothers Big Sisters**  
of Metropolitan Detroit