

# FINAL FORMS I

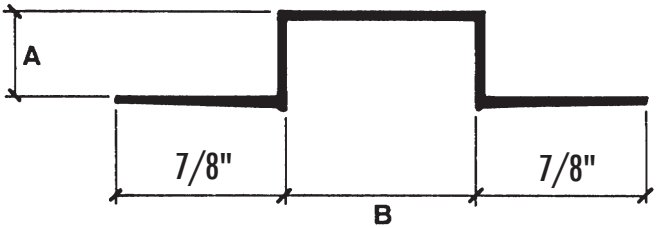
EXTRUDED TRIMS AND SHAPES IN PREFINISHED ALUMINUM

BUY ONLINE >

**GORDON**  
INTERIOR SPECIALTIES DIVISION

## SERIES 500 WALL REVEALS

PART NUMBER	A	B
518-1/2	7/16"	1/8"
514-1/2	7/16"	1/4"
538-1/2	7/16"	3/8"
512-1/2*	7/16"	1/2"
558-1/2	7/16"	5/8"
534-1/2*	7/16"	3/4"
510-1/2	7/16"	1"
515-1/2*	7/16"	1-1/2"
5134-1/2	7/16"	1-3/4"
520-1/2	7/16"	2"
525-1/2	7/16"	2-1/2"
530-1/2	7/16"	3"
540-1/2	7/16"	4"
514-5/8	5/8"	1/4"
538-5/8	5/8"	3/8"
512-5/8*	5/8"	1/2"
558-5/8	5/8"	5/8"
534-5/8*	5/8"	3/4"
510-5/8	5/8"	1"
5125-5/8	5/8"	1-1/4"
515-5/8*	5/8"	1-1/2"
520-5/8	5/8"	2"
525-5/8	5/8"	2-1/2"
530-5/8	5/8"	3"

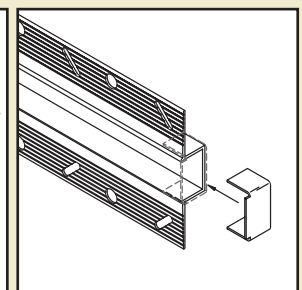
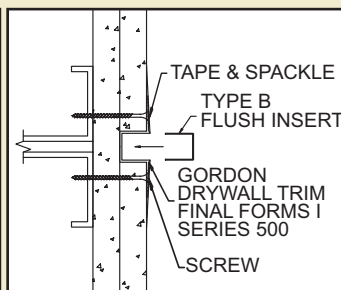
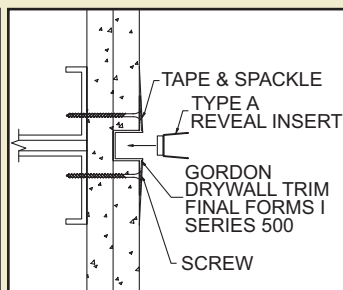
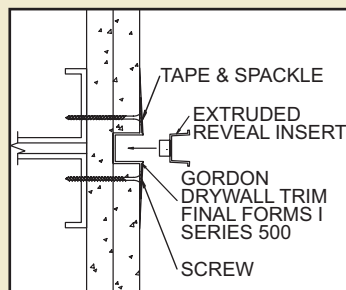


PART NUMBER	A	B
540-5/8	5/8"	4"
580-5/8	5/8"	8"
510-3/4	3/4"	1"
534-100	1"	3/4"
510-100	1"	1"
5125-100	1"	1-1/4"
520-100	1"	2"
535-100	1"	3-1/2"
515-125	1-1/4"	1-1/2"
520-125	1-1/4"	2"
525-125	1-1/4"	2-1/2"
530-125	1-1/4"	3"
560-125	1-1/4"	6"
510-150	1"	1-1/2"
520-200	2"	2"

\*Extruded Aluminum Insert Available

All trim have flanges which are tapered, grooved, and pre-punched for screw attachment to accept a bonding agent.

### INSERTS



Type A & B inserts must be 1/2" wide or larger

# FINAL FORMS I



## SERIES 500

For use with metal stud walls and GPDW to form wall reveals.

Intersections are available for typical 4-way, 3-way, and 2-way conditions. Custom intersections are also available.

Factory curving available.

