

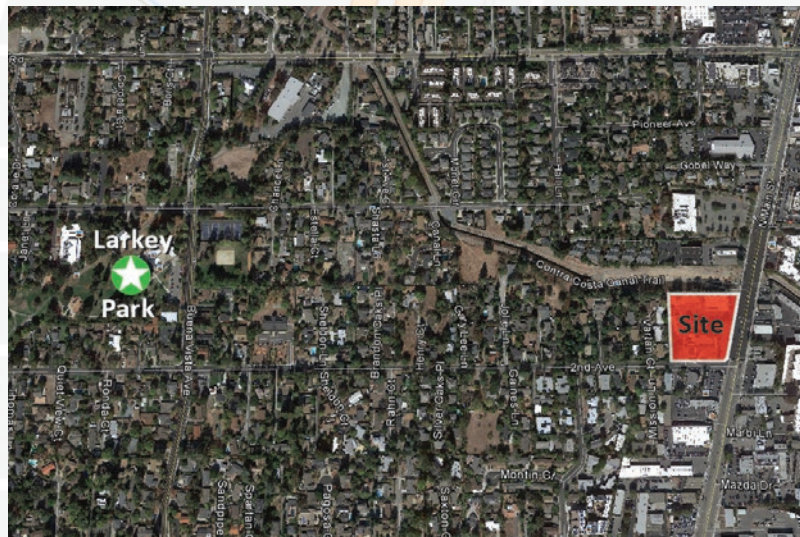


ATTENTION NEIGHBORS

On March 7th, Hall Equities Group applied for a permit to construct an In-N-Out drive-thru and Starbucks drive-thru at the corner of North Main Street and Second Avenue.

This development will negatively impact our quality of life!

- Increased traffic on already congested streets & off ramps.
- High volumes of idling cars morning and night from two busy drive-through windows.
- Pollution, Noise and Congestion!
- More unhealthy food choices in an area already saturated with fast food.



If this is unacceptable to you...

Take Action!

Sign our petition at:

tinyurl.com/No-In-N-Out

Sign Up To Act!

Send an email to us to get information, updates, notices of meetings to attend and actions you can take to oppose this.

LarkeyParkNeighborsUnited@gmail.com

Make certain that officials know your concerns.

Please send letters and emails to:

City of Walnut Creek Contacts:

General mailbox for all Council members:
mayor@walnut-creek.org

Senior Planner and City Project Manager of In-N-Out Development:
Chip Griffin: griffin@walnut-creek.org

Dont Forget to sign our online petition at:
tinyurl.com/No-In-N-Out