

LED Downlight DL4d, 6d, 8d

Benefits:

- Perfect solution for commercial, retail & residential illumination
- Simple housing design, easy to install and replace
- Lifetime of up to 25,000 hrs.
- Overall cooling design, low light attenuation
- Up to 80% energy saving
- Lower maintenance cost
- UV & IR free light
- CRI>80 + CRI>90 optional
- PC Cover + Body
- IP40



Application:

- Hallways, Offices
- Stores, Shopping Centers
- Restaurants, Bars
- Hotels, Residential



General Characteristics:

Item	Watt (W)	Luminous Flux (lm)	CRI (Ra)	CCT (K)	MOD (mm)	MOL (mm)	Voltage (V)	Hole Size (mm)	Beam Angle
DL 4d	15W	1200lm	80	2700K/3000K/ 4000K/5000K/6500K	150mm	81mm	120/220V	125mm	70
DL 6d	20W	1500lm	80	2700K/3000K/ 4000K/5000K/6500K	190mm	91mm	120/220V	160mm	70
DL 8d	25W	1800lm	80	2700K/3000K/ 4000K/5000K/6500K	230mm	101mm	120/220V	200mm	70

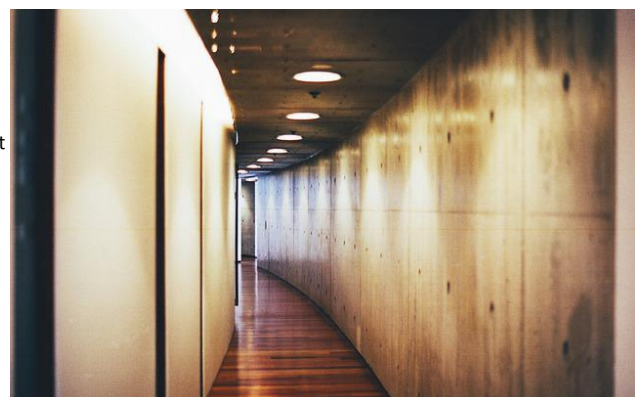
Cautions:

- Please read the contents on the box and label carefully before installation
- Check if the specification e.g. voltage, current etc meet the requirements
- Power must be cut off before installation, replacement and cleaning
- Don't touch the bulb/luminaire while it is on or immediately after turning it off. Please wait 15 min. for bulb to cool down.

Remarks:

- Power consumption tolerance: +/- 10%.
- Luminous flux tolerance: +/-10%
- PF: 0.5, PF: 0.9 also available

*Photos, descriptions and details of the product are subject to change without previous notice.



LED Downlight

Benefits:

- Perfect solution for commercial retail & residential illumination
- Simple housing design, easy to install and replace
- Lifetime of up to 30,000 hrs.
- Overall cooling design, low light attenuation
- Up to 80% energy saving
- Lower maintenance cost
- UV & IR free light
- CRI>80
- IP40

Application:

- Hallways, Offices
- Stores, Shopping Centers
- Restaurants, Bars
- Hotels, Residential



Model SD1506: 8W, 12W, 15W, 20W, 25W



Model SD1508: 30W



Model SD1507: 25W, 30W

General Characteristics:

Item	Watt	Luminous Flux (lm)	Voltage (V)	CCT (K)	MOD D (mm)	MOL H (mm)	Hole Size (mm)	PF	Beam Angle
D1506-8W	8W	500	120/220V	3000-6500K	95	58	80	0.9	100
D1506-12W	12W	900	120/220V	3000-6500K	113	59	95	0.9	100
D1506-15W	15W	1200	120/220V	3000-6500K	140	60	120	0.9	100
D1506-20W	20W	1500	120/220V	3000-6500K	170	60	150	0.9	100
D1506-25W	25W	1850	120/220V	3000-6500K	170	60	200	0.9	100
D1507-25W	25W	2000	120/220V	3000-6500K	205	48	175	0.9	100
D1507-30W	30W	2400	120/220V	3000-6500K	230	48	200	0.9	100
D1508-30W	30W	2300	120/220V	3000-6500K	230	230	200*200	0.9	100

Cautions:

- Please read the contents on the box and label carefully before installation
- Check if the specification e.g. voltage, current etc meet the requirements
- Power must be cut off before installation, replacement and cleaning
- Don't touch the bulb/luminaire while it is on or immediately after turning it off.
- Please wait 15 min. for bulb to cool down.

Remarks:

- Power consumption tolerance: +/- 10%
- Luminous flux tolerance: +/-10%
- 100-277v also available upon request



LED Slim Downlight

Round Version

Benefits:

- Perfect solution for commercial, retail & residential illumination
- Simple housing design, easy to install and replace
- Lifetime of up to 25,000 hrs.
- Overall cooling design, low light attenuation
- Up to 80% energy saving
- Lower maintenance cost
- UV & IR free light
- CRI>80 + CRI>90 optional
- PC Cover + Body
- IP40



Three Connections For Option

Application:

- Hallways, Offices
- Stores, Shopping Centers
- Restaurants, Bars
- Hotels, Residential

Input terminal
Output no-terminal type

Input and output matching cable

Output with DC socket



General Characteristics:

Item	Watt (W)	Luminous Flux (lm)	CRI (Ra)	CCT (K)	D (mm)	H (mm)	Voltage (V)	Hole Size (mm)	Beam Angle
DL-MR-4	6W	450lm	80	2700K-6500K	128mm	25mm	120/220V	115mm	120°
DL-MR-5	9W	600lm	80	2700K-6500K	146mm	25mm	120/220V	130mm	120°
DL-MR-6	12W	900lm	80	2700K-6500K	170mm	25mm	120/220V	155mm	120°
DL-MR-8	18W	1500lm	80	2700K-6500K	224mm	25mm	120/220V	210mm	120°
DL-MR-10	24W	1900lm	80	2700K-6500K	298mm	25mm	120/220V	280mm	120°

Cautions:

- Please read the contents on the box and label carefully before installation
- Check if the specification e.g. voltage, current etc meet the requirements
- Power must be cut off before installation, replacement and cleaning
- Don't touch the bulb/luminaire while it is on or immediately after turning it off. Please wait 15 min. for bulb to cool down.

Remarks:

- Power consumption tolerance: +/- 10%.
- Luminous flux tolerance: +/-10%
- PF: 0.5, PF: 0.9 also available

LED Slim Downlight

Square Version

Benefits:

- Perfect solution for commercial, retail & residential illumination
- Simple housing design, easy to install and replace
- Lifetime of up to 25,000 hrs.
- Overall cooling design, low light attenuation
- Up to 80% energy saving
- Lower maintenance cost
- UV & IR free light
- CRI>80 + CRI>90 optional
- PC Cover + Body
- IP40



Three Connections For Option

Input terminal
Output no-terminal type

Input and output matching cable

Output with DC socket



Application:

- Hallways, Offices
- Stores, Shopping Centers
- Restaurants, Bars
- Hotels, Residential

General Characteristics:

Item	Watt (W)	Luminous Flux (lm)	CRI (Ra)	CCT (K)	W (mm)	H (mm)	Voltage (V)	Hole Size (mm)	Beam Angle
DL-MS-4	6W	450lm	80	2700K-6500K	128mm	25mm	120/220V	115mm	120°
DL-MS-5	9W	680lm	80	2700K-6500K	147mm	25mm	120/220V	130mm	120°
DL-MS-6	12W	900lm	80	2700K-6500K	170mm	25mm	120/220V	155mm	120°
DL-MS-8	18W	1500lm	80	2700K-6500K	202mm	25mm	120/220V	185mm	120°

Cautions:

- Please read the contents on the box and label carefully before installation
- Check if the specification e.g. voltage, current etc meet the requirements
- Power must be cut off before installation, replacement and cleaning
- Don't touch the bulb/luminaire while it is on or immediately after turning it off. Please wait 15 min. for bulb to cool down.

Remarks:

- Power consumption tolerance: +/- 10%.
- Luminous flux tolerance: +/-10%
- PF: 0.5, PF: 0.9 also available

*Photos, descriptions and details of the product are subject to change without previous notice.

LED Surface Mount Downlight

Round Version

Benefits:

- Perfect solution for commercial, retail & residential illumination
- Simple housing design, easy to install and replace
- Lifetime of up to 25,000 hrs.
- Overall cooling design, low light attenuation
- Up to 80% energy saving
- Lower maintenance cost
- UV & IR free light
- CRI>80 + CRI>90 optional
- PC Cover + Body
- IP40



Application:

- Hallways, Offices
- Stores, Shopping Centers
- Restaurants, Bars
- Hotels, Residential

General Characteristics:

Item	Watt (W)	Luminous Flux (lm)	CRI (Ra)	CCT (K)	D (mm)	H (mm)	Voltage (V)	Beam Angle
DL-MSR-4	6W	450lm	80	2700K-6500K	169mm	36mm	120/220V	120°
DL-MSR-5	9W	600lm	80	2700K-6500K	187mm	36mm	120/220V	120°
DL-MSR-6	12W	900lm	80	2700K-6500K	211mm	36mm	120/220V	120°
DL-MSR-8	18W	1500lm	80	2700K-6500K	265mm	36mm	120/220V	120°

Cautions:

- Please read the contents on the box and label carefully before installation
- Check if the specification e.g. voltage, current etc meet the requirements
- Power must be cut off before installation, replacement and cleaning
- Don't touch the bulb/luminaire while it is on or immediately after turning it off. Please wait 15 min. for bulb to cool down.

Remarks:

- Power consumption tolerance: +/- 10%.
- Luminous flux tolerance: +/-10%
- PF: 0.5, PF: 0.9 also available

*Photos, descriptions and details of the product are subject to change without previous notice.

LED Surface Mount Downlight

Square Version

Benefits:

- Perfect solution for commercial, retail & residential illumination
- Simple housing design, easy to install and replace
- Lifetime of up to 25,000 hrs.
- Overall cooling design, low light attenuation
- Up to 80% energy saving
- Lower maintenance cost
- UV & IR free light
- CRI>80 + CRI>90 optional
- PC Cover + Body
- IP40



Application:

- Hallways, Offices
- Stores, Shopping Centers
- Restaurants, Bars
- Hotels, Residential

General Characteristics:

Item	Watt (W)	Luminous Flux (lm)	CRI (Ra)	CCT (K)	W (mm)	H (mm)	Voltage (V)	Beam Angle
DL-MSS-4	6W	450lm	80	2700K-6500K	169mm	36mm	120/220V	120°
DL-MSS-5	9W	600lm	80	2700K-6500K	188mm	36mm	120/220V	120°
DL-MSS-6	12W	900lm	80	2700K-6500K	211mm	36mm	120/220V	120°
DL-MSS-8	18W	1500lm	80	2700K-6500K	243mm	36mm	120/220V	120°

Cautions:

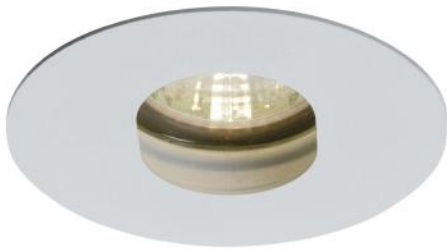
- Please read the contents on the box and label carefully before installation
- Check if the specification e.g. voltage, current etc meet the requirements
- Power must be cut off before installation, replacement and cleaning
- Don't touch the bulb/luminaire while it is on or immediately after turning it off. Please wait 15 min. for bulb to cool down.

Remarks:

- Power consumption tolerance: +/- 10%.
- Luminous flux tolerance: +/-10%
- PF: 0.5, PF: 0.9 also available

LED Downlight

- For GU10 + GU5.3 bulbs
- Metal trim in white or silver, tempered clear glass
- Lamp adjustable/tiltable 15° for DL251 & 12° for DL206 + DL207
- Without bulb, but also available upon request
- IP20



DL206
D.86 H.90mm



DL207
L.86 W. 86 H.90mm



DL251
L.90 W.90 H.115mm

