

LED Linear Opal & Reflector Light

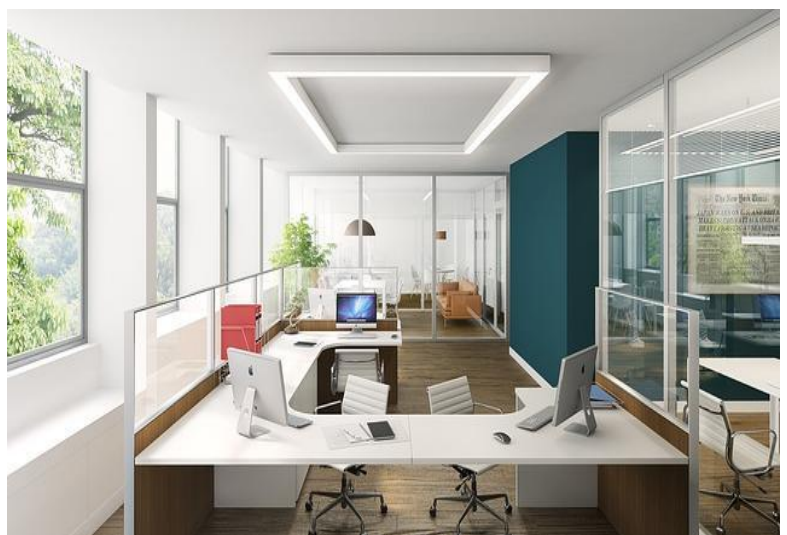
Features:

- Elegant linear light, combining optical & mechanical design to achieve a soft & uniform light
- Simple to install and replace, continuous row installation also available
- Up to 80% energy saving
- Lower maintenance cost
- UV & IR free light
- CRI>80 OR CRI>90
- 100lm/W, 120lm/W or 140lm/W
- 24W, 40W, 48W
- Length of 1124mm or 1404mm
- 3000K, 4000K, 5700K
- White, grey or black color



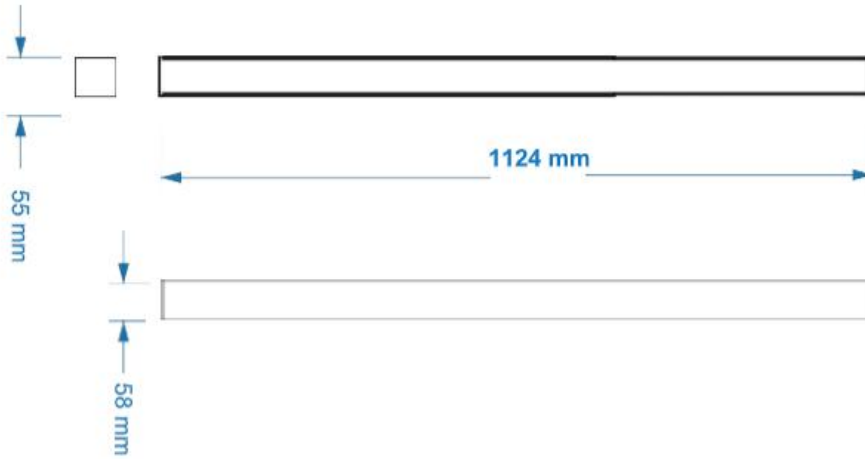
General Characteristics:

- ◇ LED Efficiency: 100lm/W – 120lm/W – 140lm/W
- ◇ CCT: 3000K, 4000K, 5700K
- ◇ CRI: >80 OR >90
- ◇ Voltage: 100-240V 50-60Hz
- ◇ Power supply efficiency: >88%
- ◇ PF:>0.95
- ◇ Protection class: II
- ◇ IP: 20
- ◇ Working temperature: -20 +40°C
- ◇ Storing temperature: -40 +60°C
- ◇ Working humidity: 15% - 90% RH

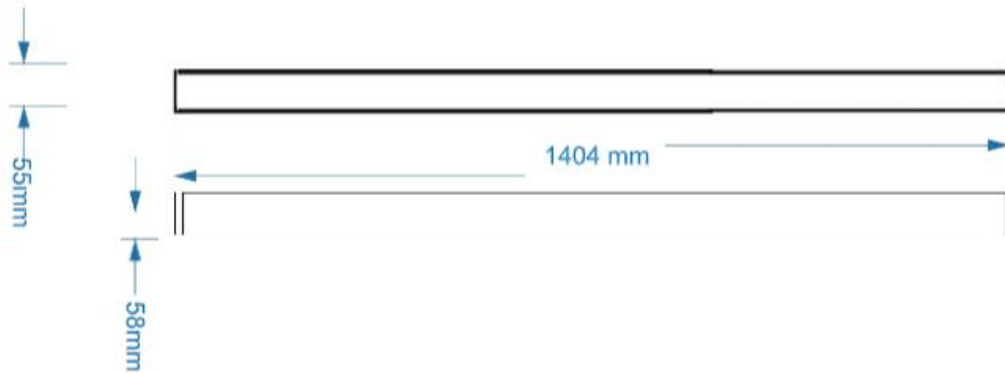


Dimensions:

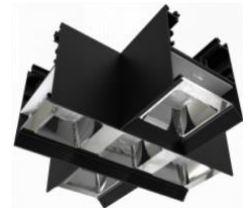
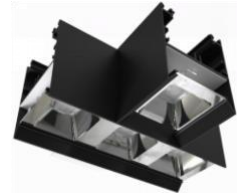
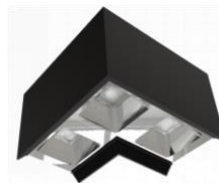
1124*55*58mm



1404*55*58mm



Continuous row installation & connectors



SUSPENSION & SURFACE-MOUNT

REFLECTOR



REFLECTOR + BLIND COVER



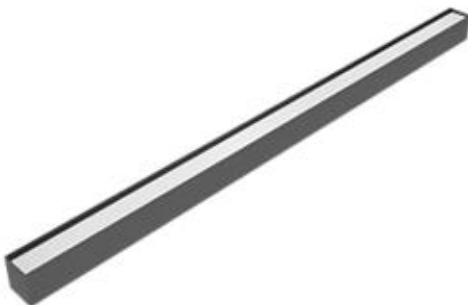
REFLECTOR + PC COVER



REFLECTOR + UGR COVER



LINEAR OPAL DIFUSER



LINEAR + UGR COVER



RECESSED MOUNT

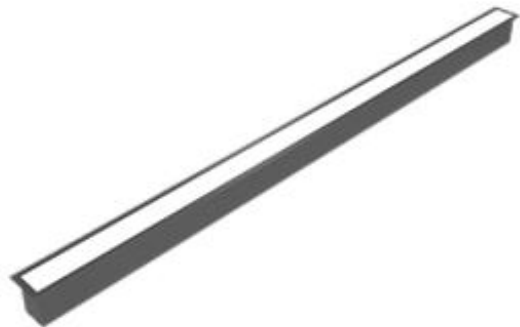
REFLECTOR



LINEAR



LINEAR + UGR COVER



Cautions:

- Please read the contents on the box and label carefully before installation
- Check if the specification e.g. voltage, current etc meet the requirements
- Power must be cut off before installation, replacement and cleaning
- Don't touch the luminaire while it is on or immediately after turning it off. Please wait 15 min. to cool down

Remarks:

- Power consumption tolerance: +/- 10%
- Luminous flux & cd tolerance: +/-10%

*Photos, descriptions and details of the product are subject to change without previous notice.