

LED Linear Opal & Reflector Light

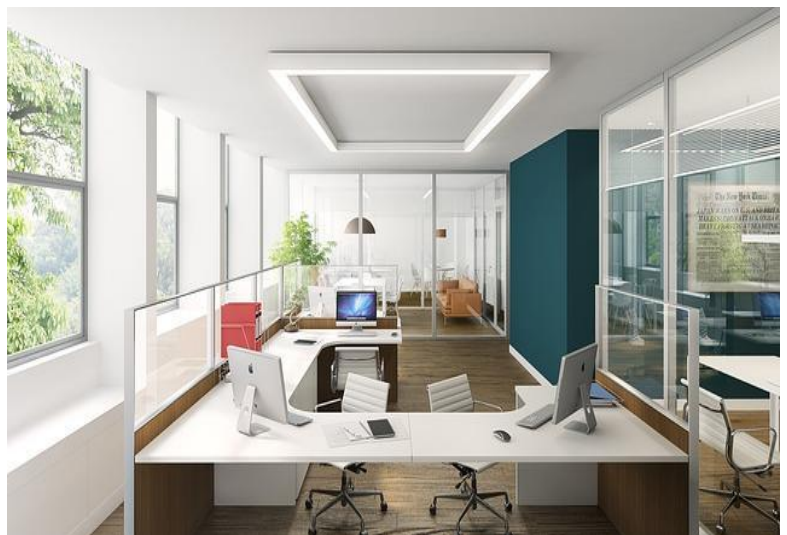
Features:

- Elegant linear light, combining optical & mechanical design to achieve a soft & uniform light
- Simple to install and replace, continuous row installation also available
- Up to 80% energy saving
- Lower maintenance cost
- UV & IR free light
- CRI>80 OR CRI>90
- 100lm/W, 120lm/W or 140lm/W
- 24W, 40W, 48W
- Length of 1124mm or 1404mm
- 3000K, 4000K, 5700K
- White, grey or black color



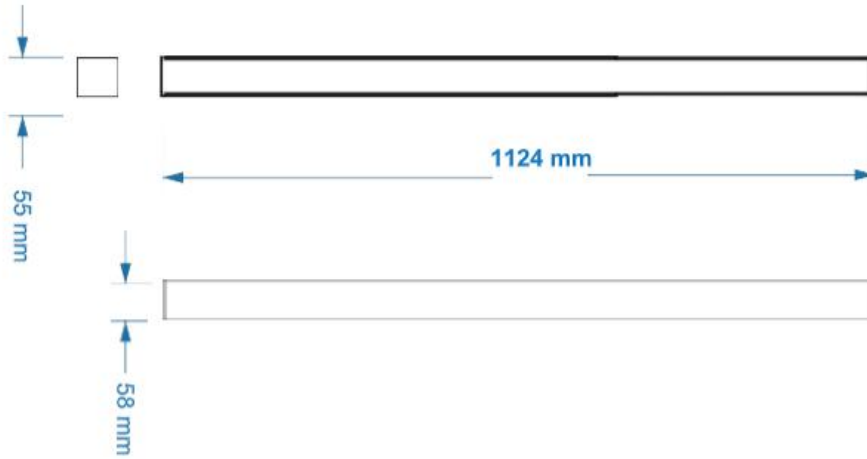
General Characteristics:

- ◇ LED Efficiency: 100lm/W – 120lm/W – 140lm/W
- ◇ CCT: 3000K, 4000K, 5700K
- ◇ CRI: >80 OR >90
- ◇ Voltage: 100-240V 50-60Hz
- ◇ Power supply efficiency: >88%
- ◇ PF:>0.95
- ◇ Protection class: II
- ◇ IP: 20
- ◇ Working temperature: -20 +40°C
- ◇ Storing temperature: -40 +60°C
- ◇ Working humidity: 15% - 90% RH

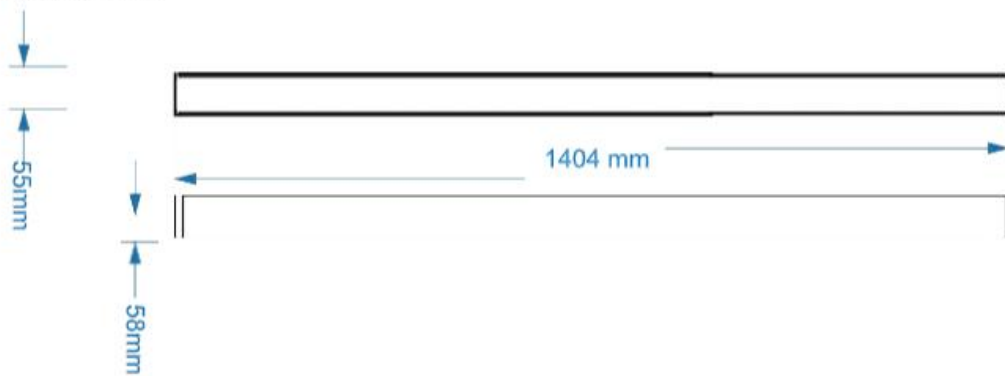


Dimensions:

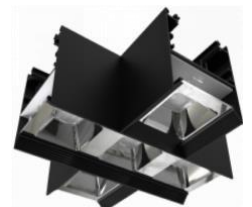
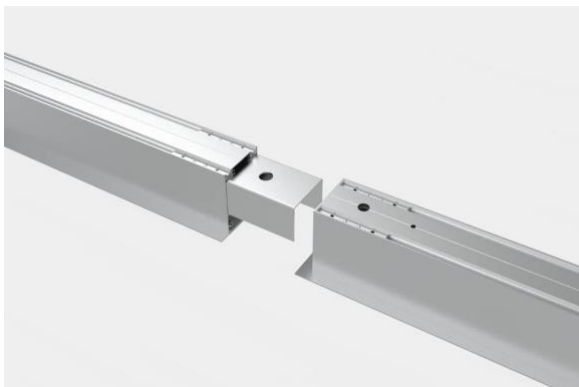
1124*55*58mm



1404*55*58mm

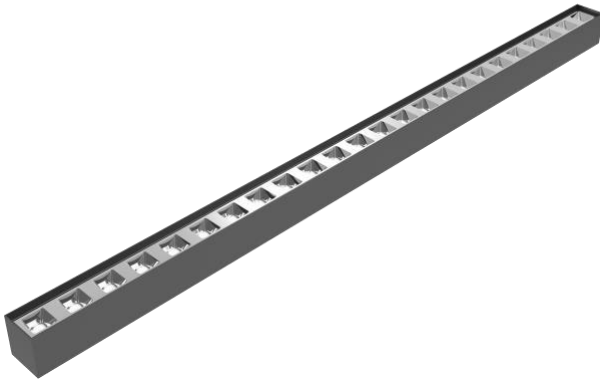


Continuous row installation & connectors

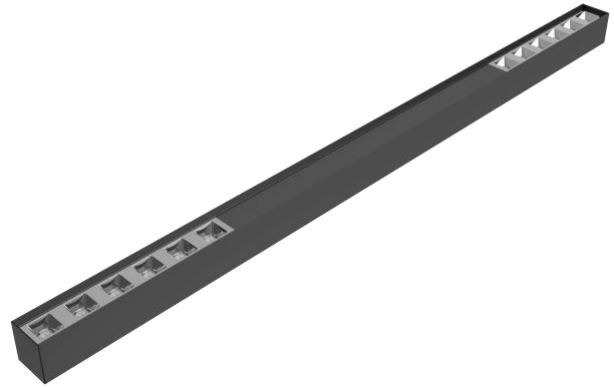


SUSPENSION & SURFACE-MOUNT

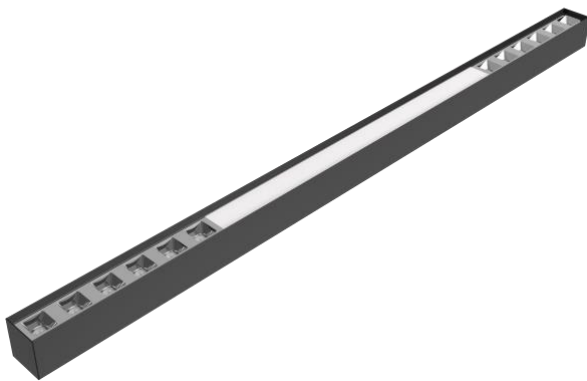
REFLECTOR



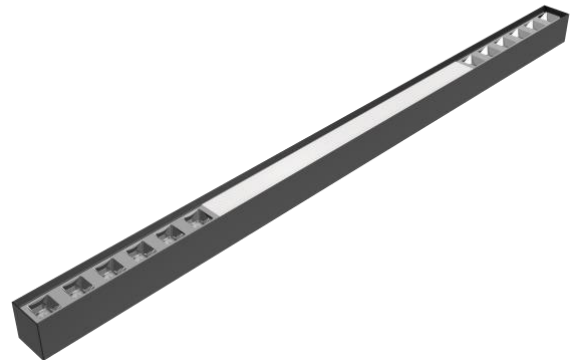
REFLECTOR + BLIND COVER



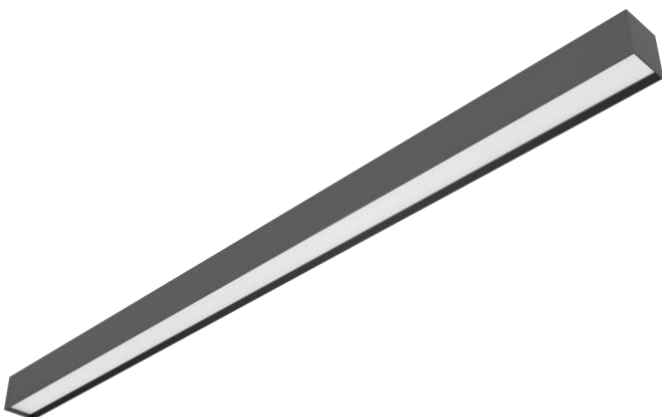
REFLECTOR + PC OPAL COVER



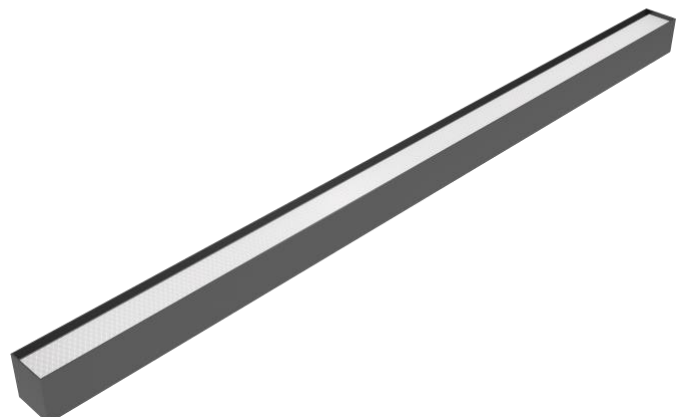
REFLECTOR + UGR COVER



OPAL DIFFUSER



UGR COVER

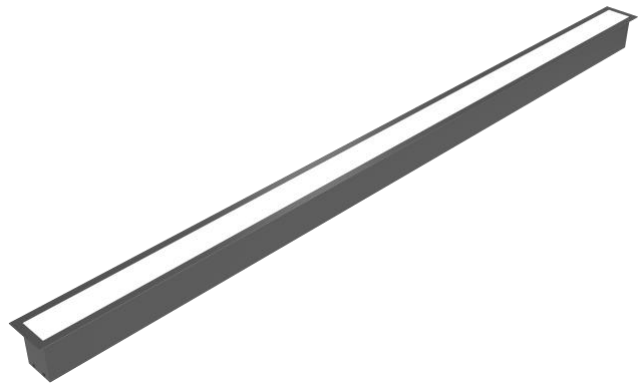


RECESSED MOUNT

REFLECTOR



OPAL DIFFUSER



UGR COVER



Cautions:

- Please read the contents on the box and label carefully before installation
- Check if the specification e.g. voltage, current etc meet the requirements
- Power must be cut off before installation, replacement and cleaning
- Don't touch the luminaire while it is on or immediately after turning it off. Please wait 15 min. to cool down

Remarks:

- Power consumption tolerance: +/- 10%
- Luminous flux & cd tolerance: +/-10%

*Photos, descriptions and details of the product are subject to change without previous notice.

LED Linear Lens Light 30, 40 & 50

Features:

- Compact reflector & housing
- Optional lenses:
30 – 30°, 45°, 90°
40 – 24°, 38°, 70°, 90°
- UGR<19 or UGR<16
- Easy connection without light leaking
- For suspension, recessed & surface mounting
- Integrated driver
- RA90 optional
- Silver, black or white color available
- Up to 120lm/W
- Up to 80% energy saving
- Lower maintenance cost
- UV & IR free light
- Simple to install & replace

L30



L40



L50

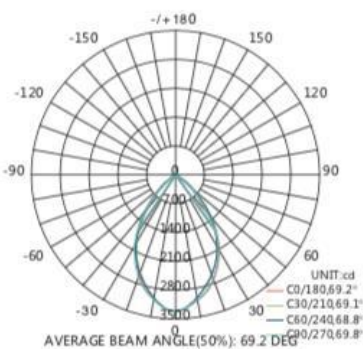


General Characteristics:

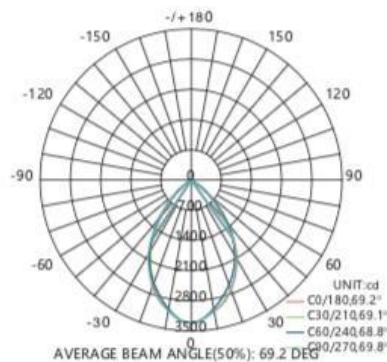
PRODUCT CODE	POWER (W)	VOLTAGE	Lumen Output	CCT (K)	CRI	PRODUCT DIMENSION	UGR
TLL30-36	36W	110-240V/50-60Hz	3200	3000K-6000K	80	34*62*1220mm	<19
TLL30-45	45W	110-240V/50-60Hz	4050	3000K-6000K	80	34*62*1480mm	<19
TLL40-30	30W	110-240V/50-60Hz	3400	3000K-6000K	80	40*60*1140mm	<16
TLL40-36	36W	110-240V/50-60Hz	4100	3000K-6000K	80	40*60*1520mm	<16
TLL50-30	30W	110-240V/50-60Hz	3600	3000K-6000K	80	55*58*1124mm	<19
TLL50-36	36W	110-240V/50-60Hz	4300	3000K-6000K	80	55*58*1404mm	<19

Photometric Data:

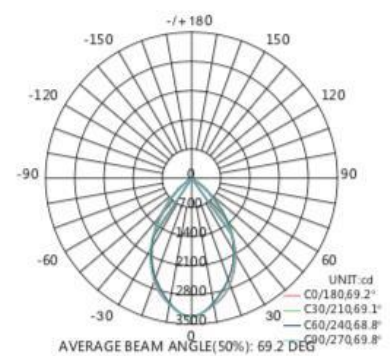
Linear 30



Linear 40



Linear 50



Connector Accessories



L Connector



T Connector



X Connector



180° Joining Connector

Cautions:

- Please read the contents on the box and label carefully before installation
- Check if the specification e.g. voltage, current etc meet the requirements
- Power must be cut off before installation, replacement and cleaning
- Don't touch the luminaire while it is on or immediately after turning it off. Please wait 15 min. to cool down

Remarks:

- Power consumption tolerance: +/- 10%
- Luminous flux & cd tolerance: +/-10%

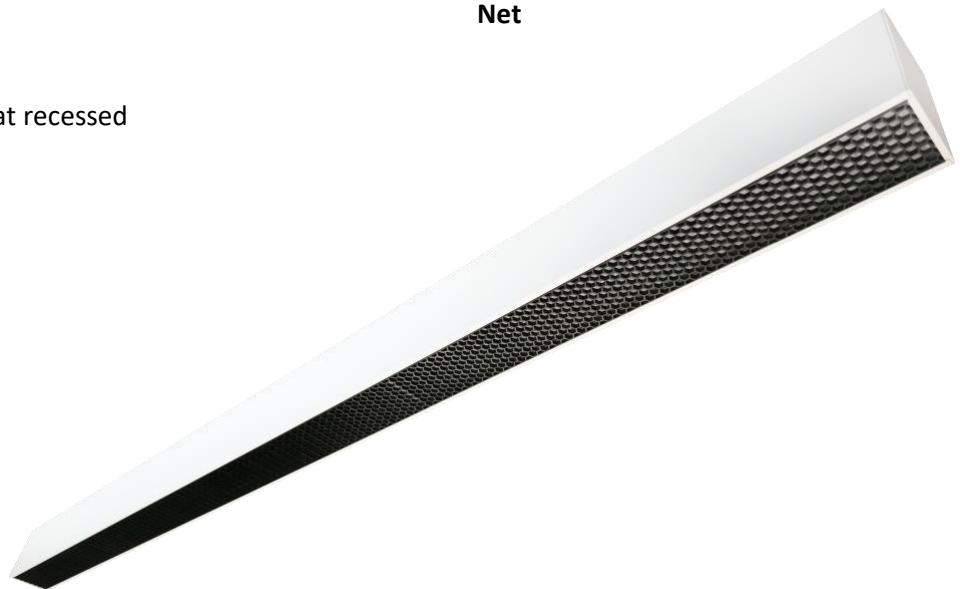
*Photos, descriptions and details of the product are subject to change without previous notice.

LED Linear 20 Net & Wall Washer

Features:

- Net used with UGR<19
- Optional lenses for Net 30°, 60°, 90°
- Wall washer version with UGR<22 to highlight walls, pictures, stores, etc.
- Easy connection without light leaking
- Integrated driver
- RA90 optional
- CCT adjustable for wall washer version
- Silver, black or white color available
- Up to 100lm/W
- UV & IR free light
- Mounting:
 - Net – Suspension, surface mount, flat recessed
 - Wall washer - Suspension

Net



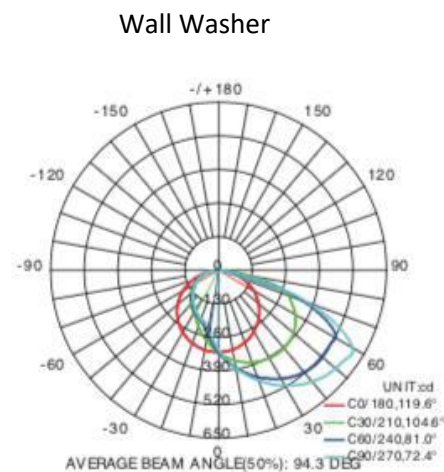
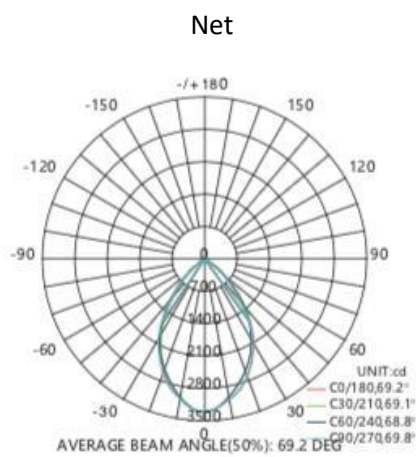
Wall Washer



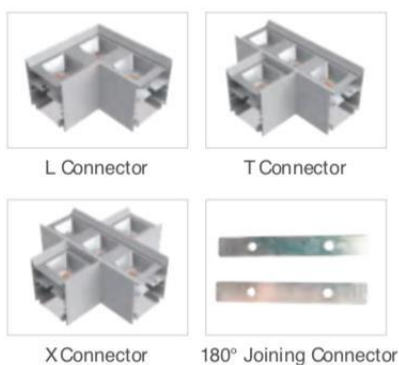
General Characteristics:

PRODUCT CODE	POWER (W)	VOLTAGE	Lumen Output	CCT (K)	CRI	PRODUCT DIMENSION	UGR
TLN20-36	36W	110-240V/50-60Hz	3200	3000K-6000K	80	52*68*1180mm	<19
TLN20-45	45W	110-240V/50-60Hz	4050	3000K-6000K	80	52*68*1460mm	<19
TLWW20-24	24W	110-240V/50-60Hz	1500	3000K-6000K	80	50*80*1140mm	<22
TLWW20-48	48W	110-240V/50-60Hz	2900	3000K-6000K	80	50*80*1450mm	<22

Photometric Data:



Connector Accessories for NET version



Cautions:

- Please read the contents on the box and label carefully before installation
- Check if the specification e.g. voltage, current etc meet the requirements
- Power must be cut off before installation, replacement and cleaning
- Don't touch the luminaire while it is on or immediately after turning it off. Please wait 15 min. to cool down

Remarks:

- Power consumption tolerance: +/- 10%
- Luminous flux & cd tolerance: +/-10%

*Photos, descriptions and details of the product are subject to change without previous notice.