



MANOS DEL URUGUAY

FREE PATTERN



Coluin Cardigan

by Helen Metcalfe



Pattern uses **Manos Fino** shown in FI405 Peacock Plume

Other suggested Fino colours to choose from:



FI9999 Violets



FI9237 Bramble



FI6881 Jewel



MANOS DEL URUGUAY

SIZE

XS (S, M, L, XL, **2X**, 3X)

Designed to fit with 0-5cm ease at bust.

Bust circumference: 76 (**86**, 96.5, **106.5**, 117, **127**, 137) cm

Length to underarm: 30cm

Cross back: 33 (**35**, 38, **41**, 43, **45**, 48) cm

Armhole depth: 19 (**20**, 21.5, **23**, 24, **25.5**, 26.5) cm

Full length: 50.5 (**51.5**, 53, **54.5**, 55.5, **57**, 58) cm

Shoulder: 8 (**8.5**, 9, **9.5**, 10, **10.5**, 11) cm

Sleeve length: 40cm

MATERIALS

Manos Del Uruguay Silk Blend Fino (70% merino wool, 30% silk), 450m/492yds per 100g)

Shown in FI405 Peacock Plume

2 (3, 3, 3, 4, 4, 5) x 100g skeins

3.5mm (US 4) 100cm circular needle, or size needed to obtain gauge

6 stitch markers

Cable needle

5 buttons, 20mm

Tapestry needle

2 stitch holders

TENSION

28 sts and 35 rows in 10cm square measured over 2x2 rib

40 st cable panel in 12cm

ABBREVIATIONS

beg: beginning

C4F: slip next 2 sts onto CN, hold at front, k2 from LH needle, k2 from CN

C4B: slip next 2 sts onto CN, hold at back, k2 from LH needle, k2 from CN

cont: continue

dec: decrease

fol: following

inc: increase

k: knit

k2tog: knit 2 together. 1 st dec'd

k-wise: knitwise

m1: make 1. 1 st inc'd

p: purl

patt: pattern

pm: place marker

p-wise: purlwise

p2tog: purl 2 together. 1 st dec'd

rem: remaining

rep: repeat

RS: right side

st(s): stitch(es)

ssp: slip 1 knitwise, slip 1 purlwise, knit 2 slipped sts together. 1 st dec'd

ssp: slip 1 knitwise, slip next knitwise, purl 2 slipped sts together. 1 st dec'd

T4F: slip next 2 sts onto CN, hold at front, p2 from LH needle, k2 from CN

T4B: slip next 2 sts onto CN, hold at back, k2 from LH needle, p2 from CN

WS: wrong side

yo2: double yarnover: bring yarn to front of work, wrap it around right-hand needle and back to the front again, work the next st wyif. 2 sts inc'd

NOTES

This cardigan is knitted flat from the bottom up in one piece to the armholes, then split and worked separately. A circular needle is recommended to accommodate the large number of sts for body. It features set in sleeves with a cable pattern that can be worked from the chart or written instructions, whichever you prefer.

SPECIAL INSTRUCTIONS

When completing the sleeve increases, m1 k-wise or p-wise depending on what's needed to continue the 2x2 rib pattern.

Make 1 k-wise: Work to the place where the increase is to be made. Insert the left needle from front to back into the horizontal strand between the two stitches.

Knit the stitch through the back loop.

Make 1 p-wise: On the purl side, insert the needle from front to back and then purl the stitch through the back loop.

As the shaping at the top of the sleeves/armhole shaping in the body of the pattern progresses the cable pattern will be interrupted – keep working in cable patt for as long as possible and work plain ribbing where you cannot complete a cable.

HINTS AND TIPS

You might find it easier to keep track of the cable pattern if you place markers between each 40 st cable rep, as instructed in the pattern. Slip all markers as you come to them.

While designed to be worn with no ease, the 2x2 rib sections give a little bit of stretch, so I'd suggest choosing a smaller size if you're between two.

INSTRUCTIONS

Cable stitch pattern (worked over 40 sts)

Row 1 (RS): C4F, [k2, p2] twice, C4B, [k2, p2] twice, k2, C4B, p2, C4B, k2, p2.

Row 2 (WS): K2, p6, [k2, p6, k2, p2] twice, k2, p6.

Row 3: K2, T4F, [p2, k2] twice, C4F, p2, k2, p2, T4B, k2, p2, k2, C4F, p2.

Row 4: *K2, p6, [k2, p2] three times; rep from * once more.

Row 5: *[K2, p2] three times, C4B, k2, p2; rep from * once more.

Row 6: As Row 4.

Row 7: C4F, [k2, p2] twice, k2, C4F, [p2, k2] twice, C4B, p2, k2, C4F, p2.

Row 8: As Row 2.

Row 9: K2, T4F, p2, k2, p2, C4B, [k2, p2] twice, T4B, k2, p2, C4B, k2, p2.

Row 10: As Row 4.

Row 11: K2, p2, C4F, k2, p2, k2, C4F, p2, k2, C4B, [p2, k2] twice, C4F, p2.

Row 12: K2, p6, k2, p2, [k2, p6] three times, k2, p2.

Row 13: K2, p2, k2, T4F, p2, C4B, k2, p2, T4B, [k2, p2] twice, C4B, k2, p2.

Row 14: As Row 4.

Row 15: *[K2, p2] three times, k2, C4F, p2; rep from * once more.

Row 16: As Row 4.

Row 17: K2, p2, C4F, k2, p2, C4B, k2, p2, k2, C4B, p2, k2, p2, C4B, k2, p2.

Row 18: As Row 12.

Row 19: K2, p2, k2, T4F, p2, k2, C4F, p2, T4B, [k2, p2] twice, k2, C4F, p2.

Row 20: As Row 4.

374, 400, 434) sts.

Rib Row 1 (RS): P0 (1, 0, 2, 3, 0, 1), *k2, p2; rep from * to last 0 (1, 0, 2, 3, 0, 1) sts, k to end.

Rep Row 1 a further 9 times.

Continue in pattern as follows:

Row 1 (RS): P0 (1, 0, 2, 3, 0, 1), [k2, p2] twice, pm, work Row 1 of cable patt from chart or written instructions 1 (1, 1, 2, 2, 2) time(s), pm, [k2, p2] 7 (6, 10, 9, 4, 8, 7) times, pm, work Row 1 of cable patt 2 (3, 3, 4, 4, 4, 5) time(s), pm, [k2, p2] 7 (6, 10, 9, 4, 8, 7) times, pm, work Row 1 of cable patt 1 (1, 1, 1, 2, 2, 2) time(s), pm, [k2, p2] twice, k0 (1, 0, 2, 3, 0, 1).

Last row sets the position of rib and cable patt sections.

Cont in patt until Body measures 30cm from cast-on edge.

Right front

Neckline and armhole shaping

Next row (RS, dec): P0 (1, 0, 2, 3, 0, 1), k1 (0, 1, 0, 0, 1, 0), ssk, work a further 50 (57, 64, 69, 81, 89, 95) sts in patt, turn.

Place rem 179 (206, 229, 259, 288, 308, 336) sts on hold.

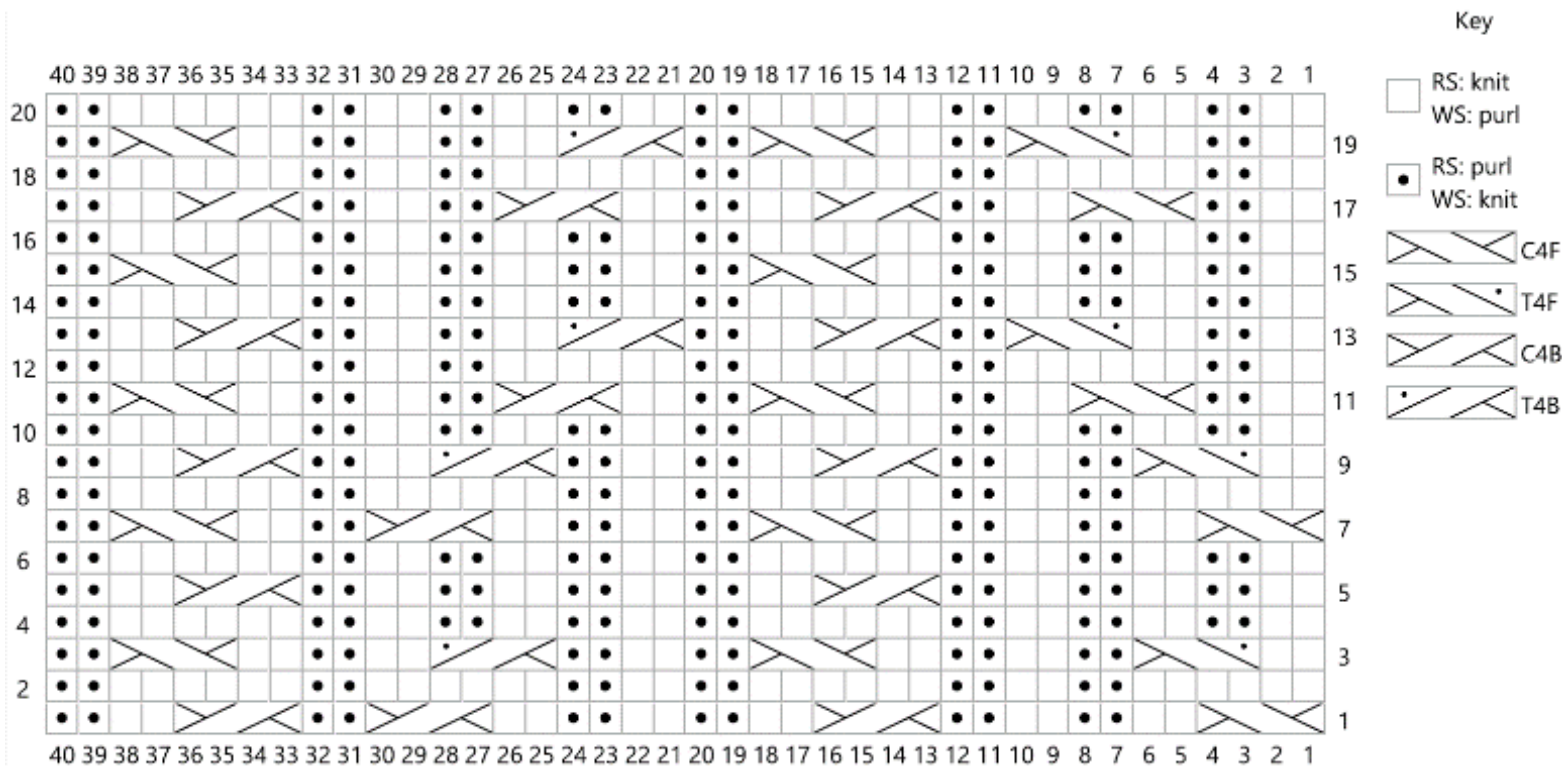
52 (59, 66, 72, 85, 91, 97) sts rem for right front.

Next row (WS): Work in patt to end.

Next row (RS dec): P0 (1, 0, 2, 3, 0, 1), k1 (0, 1, 0, 0, 1, 0), ssk, work in patt to end. 1 st dec'd

Rep RS dec row, at the same time cast off at the beg of the foll 1 (1, 2, 3, 4, 4, 5) WS row(s) as follows:

***Cast off 2 (2, 3, 4, 5, 5, 6) sts, 1 time.



Body

Using 3.5mm circular needles, cast on 232 (266, 296, 332,

Cast off 0 (0, 2, 3, 4, 4, 5) sts, 0 (0, 1, 1, 1, 1, 1) time.
 Cast off 0 (0, 0, 2, 3, 3, 4) sts, 0 (0, 0, 1, 1, 1, 1) time.
 Cast off 0 (0, 0, 0, 2, 2, 3) sts, 0 (0, 0, 0, 1, 1, 1) time.
 Cast off 0 (0, 0, 0, 0, 0, 2) sts, 0 (0, 0, 0, 0, 0, 1) time. 49
 (56, 59, 60, 67, 73, 72) sts***

Next row (RS, dec): P0 (1, 0, 2, 3, 0, 1), k1 (0, 1, 0, 0, 1, 0),
 ssk, patt to last 3 sts, k2tog, k1. 2 sts dec'd

Next row (WS): Work in patt to end.

Rep these two rows a further 1 (5, 4, 2, 1, 5, 1) times. 45
 (44, 49, 54, 63, 61, 68) sts

Cont to dec 1 st from neck edge only every RS row until 23
 (24, 26, 27, 28, 30, 31) sts rem.

Cont in patt without shaping until right front measures 49
 (50, 51.5, 53, 54, 55.5, 56.5) cm from cast-on edge, ending
 after a RS row.

Shoulder shaping

Next row (WS): Cast off 7 (8, 8, 9, 9, 10, 10) sts, work in
 patt to end. 16 (16, 18, 18, 19, 20, 21) sts

Next row: Work in patt to end.

Next row (WS): Cast off 8 (8, 9, 9, 9, 10, 10) sts, work in
 patt to end. 8 (8, 9, 9, 10, 10, 11) sts

Next row: Work in patt to end.

Cast off.

Back

With RS facing, return first 120 (140, 154, 176, 190, 204,
 224) sts to needle and rejoin yarn, leaving rem 59 (66, 75,
 83, 98, 104, 112) sts on hold.

Armhole

Cast off 6 (6, 8, 10, 12, 12, 14) sts, work in patt to end. 114
 (134, 146, 166, 178, 192, 210) sts

Next row & all foll WS rows unless otherwise stated:
 Work in patt to end.

At beg of next 2 rows cast off 2 (2, 3, 4, 5, 5, 6) sts. 110
 (130, 140, 158, 168, 182, 198) sts

At beg of next 0 (0, 2, 2, 2, 2, 2) rows cast off 0 (0, 2, 3, 4,
 4, 5) sts. 110 (130, 136, 152, 160, 174, 188) sts

At beg of next 0 (0, 0, 2, 2, 2, 2) rows cast off 0 (0, 0, 0, 2,
 3, 3, 4) sts. 110 (130, 136, 148, 154, 168, 180) sts

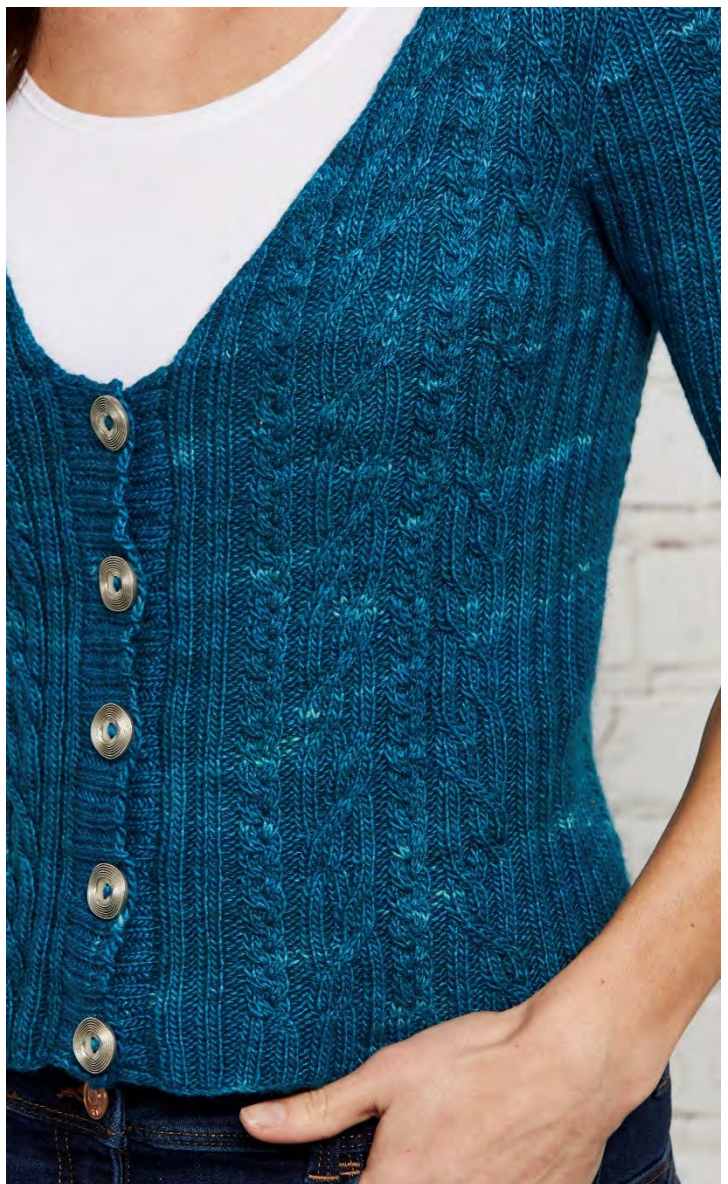
At beg of next 0 (0, 0, 0, 2, 2, 2) rows cast off 0 (0, 0, 0, 2,
 2, 3) sts. 110 (130, 136, 148, 150, 164, 174) sts

At beg of next 0 (0, 0, 0, 0, 0, 2) rows cast off 0 (0, 0, 0, 0,
 0, 2) sts. 110 (130, 136, 148, 150, 164, 170) sts

Next row (RS, dec): K1, ssk, work in patt to last 3 sts,
 k2tog, k1. 2 sts dec'd

Maintaining patt, rep this dec row every RS row 1 (5, 4, 2,
 1, 5, 1) more times. 106 (118, 126, 142, 146, 152, 166) sts

Cont in patt without shaping until back measures 49 (50,
 51.5, 53, 54, 55.5, 56.5) cm from cast-on edge, ending
 after a WS row.



Shoulder shaping

Maintaining patt throughout, at beg of next 2 rows cast off 7
 (8, 8, 9, 9, 10, 10) sts. 92 (102, 110, 124, 128, 132, 146) sts

At beg of next 2 rows cast off 8 (8, 9, 9, 9, 10, 10) sts. 76 (86,
 92, 106, 110, 112, 126) sts

At beg of next 2 rows cast off 8 (8, 9, 9, 10, 10, 11) sts 60
 (70, 74, 88, 90, 92, 104) sts

Cast off rem sts.

Left front

Next row: With RS facing, return rem 59 (66, 75, 83, 98, 104,
 112) sts to needle and rejoin yarn.

Next row (RS): Cast off 6 (6, 8, 10, 12, 12, 14) sts, work in
 patt to last 3 sts, k2tog, k1. 52 (59, 66, 72, 85, 91, 97) sts

Next row & all foll WS rows unless otherwise stated: Work
 in patt to end.

Cont in patt to dec 1 st at neck edge on RS row as before
 and also cast off at the beg of the foll 1 (1, 2, 3, 4, 4, 5) RS



rows as for right front from *** to ***. 49 (56, 59, 60, 67, 73, 72) sts

Next row (RS, dec): K1, ssk, patt to last 3 sts, k2tog, k1. 2 sts dec'd

Next row: Work in patt to end.

Rep these two rows a further 1 (5, 4, 2, 1, 5, 1) times. 45 (44, 49, 54, 63, 61, 68) sts

Cont to dec 1 st from neck edge only on every RS row until 23 (24, 26, 27, 28, 30, 31) sts rem.

Cont in patt without shaping until left front measures 49 (50, 51.5, 53, 54, 55.5, 56.5) cm ending with a WS row.

Shoulder shaping

Next row (RS): Cast off 7 (8, 8, 9, 9, 10, 10) sts, work in patt to end. 16 (16, 18, 18, 19, 20, 21) sts

Next row: Work in patt to end.

Next row: Cast off 8 (8, 9, 9, 9, 10, 10) sts, work in patt to end. 8 (8, 9, 9, 10, 10, 11) sts

Next row: Work in patt to end.
Cast off.

Sleeves (work both the same)

Cast on 60 (64, 68, 72, 76, 80, 84) sts.

Rib Row 1 (RS): P2 (0, 2, 0, 2, 0, 2), *k2, p2; rep from * to last 2 (0, 2, 0, 2, 0, 2) sts, k2 (0, 2, 0, 2, 0, 2).

Rep last row a further 8 (6, 4, 8, 4, 6, 4) times.

Next row (WS): Work 10 (12, 14, 16, 18, 20, 22) sts in patt, pm, work 40 sts in patt, pm, work in patt to end.

Sizes XS, S, M, L & XL only

Next row (RS, inc): Work 2 sts in patt, m1, work in patt to marker, work cable patt from chart or written instructions, work in patt to last 2 sts, m1, work in patt to end. 2 sts inc'd
Work 5 (5, 5, 3, 3, -, -) rows straight in patt.

Rep last 6 (6, 6, 4, 4, -, -) rows, 12 (12, 12, 14, 17, -, -) more times. 86 (90, 94, 102, 112, -, -) sts

Sizes 2X & 3X only

Next row (RS, inc): Work 2 sts in patt, m1, work in patt to marker, work cable patt from chart or written instructions, work in patt to last 2 sts, m1, work in patt to end. 2 sts inc'd
Work 1 row straight in patt.

Rep RS inc row. 2 sts inc'd

Work 3 rows straight in patt.

Rep these 6 rows, - (-, -, -, -, 10, 11) more times. - (-, -, -, -, 124, 132) sts

Rep RS inc row. - (-, -, -, -, 126, 134) sts

All sizes

Cont even in patt until sleeve measures 40cm from cast-on edge, ending after a WS row.

Cast off 3 (3, 4, 5, 6, 6, 7) sts at beg of next 2 rows. 80 (84, 86, 92, 100, 114, 120) sts

Next row (RS, dec): K1, ssk, patt to last 3 sts, k2tog, k1. 2 sts dec'd

Rep this RS dec row every RS row, 20 (22, 24, 26, 27, 27, 27) more times and at the same time work a WS armhole dec row every 14 (22, 0, 0, 26, 8, 4) rows, 3 (2, 0, 0, 2, 7, 10) times as follows:

Next WS dec row: P1, ssp, patt to last 3 sts, p2tog, p1. 2 sts dec'd

32 (34, 36, 38, 40, 44, 44) sts

Cast off 3 sts at beg of next 2 rows. 26 (28, 30, 32, 34, 38, 38) sts

Cast off 4 sts at beg of next 2 rows. 18 (20, 22, 24, 26, 30, 30) sts

Cast off rem sts.

Left buttonband

With RS facing and starting at start of left front neckline shaping, pick up and knit 84 sts down left front.

Row 1 (WS): *K2, p2; rep from * to end.

Row 2 (RS, dec): K1, ssk, work in patt as set to end. 1 st dec'd

Work 6 more rows in rib as set, dec 1 st in the same way on every RS row. 80 sts

Cast off.

Right buttonhole band

With RS facing and starting at lower edge of right front, pick up and knit 84 sts up right front.

Row 1 (WS): *P2, k2; rep from * to end.

Row 2 (RS, dec): Work in patt to last 3 sts, k2tog, k1. 1 st dec'd

Row 3: Work in rib as set.

Row 4: As Row 2. 82 sts

Row 5: P2, k2, p2, k1, *k2tog, yo2, ssk, k1 [p2, k2] twice, p2, k1; rep from * 3 more times, k2tog, yo2, ssk, k1, p2, k2, p2.

Row 6 (RS, dec): Patt to last 3 sts, ensuring you k2 into each yo2 from previous row, k2tog, k1. 81 sts

Row 7: Work in rib as set.

Row 8: As Row 2. 80 sts

Cast off.

Finishing

Sew shoulder seams. Line up the centre of the sleeve head with the shoulder seam, joining the seams using mattress stitch. Sew sleeve seam. Rep for other sleeve. Attach buttons along left buttonband to line up with buttonholes. Weave in all ends and block to measurements shown in schematic.

