

Chromatogram Report

Analysis Info

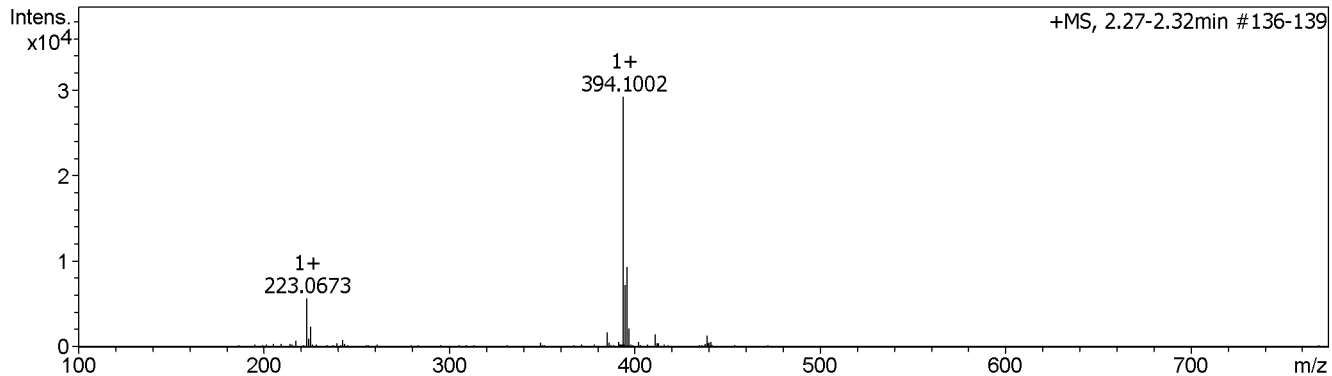
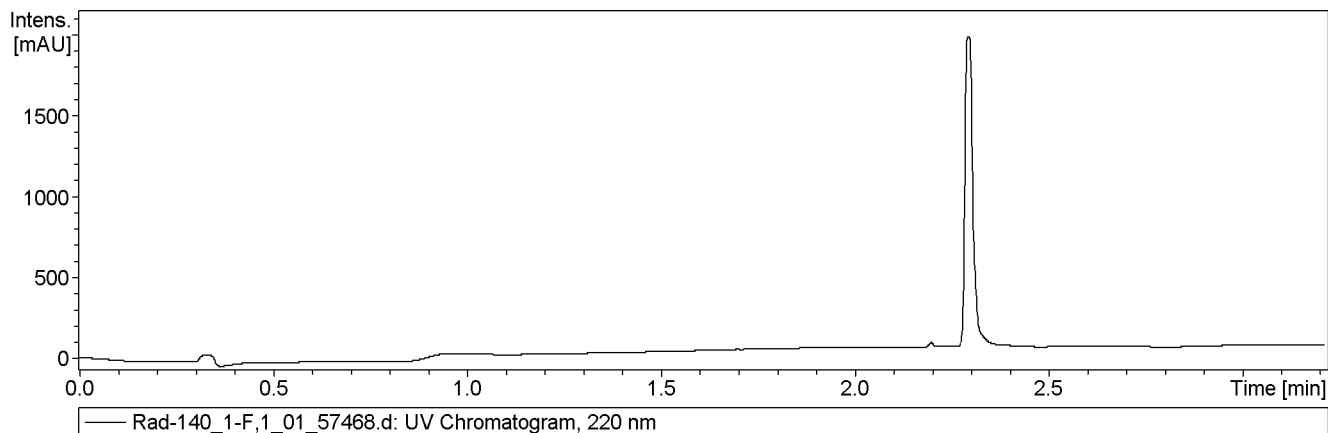
Analysis Name D:\Data\test\Rad-140_1-F,1_01_57468.d
MS Method peptide-with_ms.m
Sample Name Rad-140
Comment

Acquisition Date Oct/31/2017 2:40:58 PM

Operator Microtof
Instrument UPLC No.1

Acquisition Parameter

Source Type	ESI	Ion Polarity	Positive	Set Nebulizer	3.0 Bar
Focus	Active			Set Dry Heater	180 °C
Scan Begin	100 m/z	Set Capillary	4500 V	Set Dry Gas	2.0 l/min
Scan End	3000 m/z	Set End Plate Offset	-500 V	Set Divert Valve	Waste



#	RT [min]	Area	Int. Type	I	S/N	Chromatogram	Max. m/z	Area Frac. %
n.a.	2.30	n.a.	Average spectrum	n.a.	n.a.	n.a.	394.1002	n.a.