

Chromatogram Report

Analysis Info

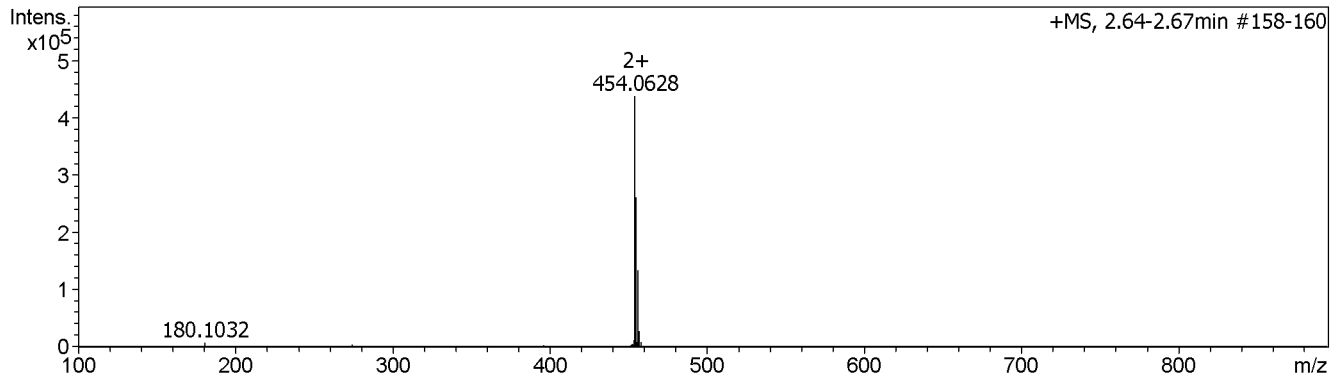
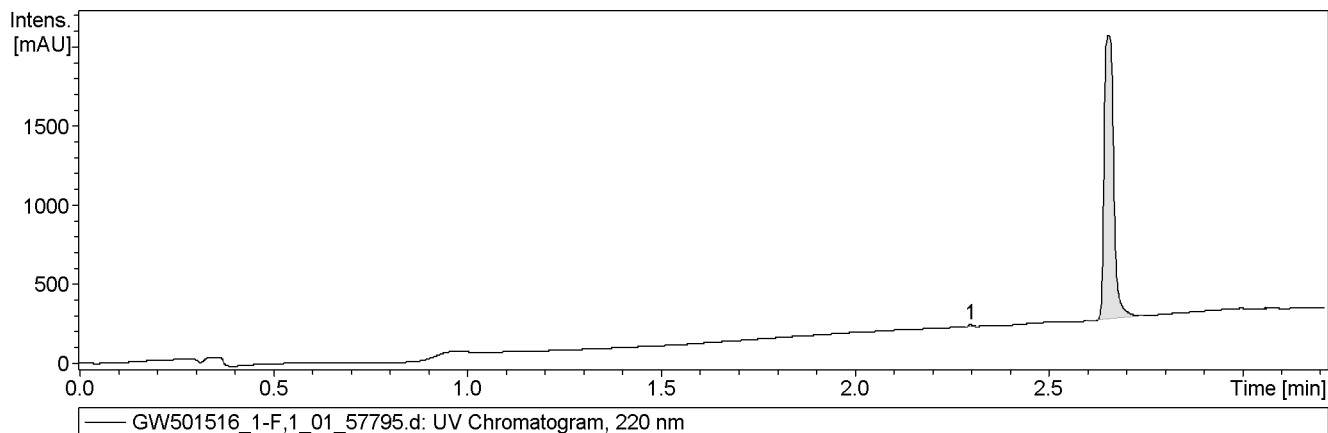
Analysis Name D:\Data\test\GW501516_1-F,1_01_57795.d
 MS Method peptide-with_ms.m
 Sample Name GW501516
 Comment

Acquisition Date Dec/20/2017 2:48:54 PM

Operator Microtof
 Instrument UPLC No.1

Acquisition Parameter

Source Type	ESI	Ion Polarity	Positive	Set Nebulizer	3.0 Bar
Focus	Active			Set Dry Heater	180 °C
Scan Begin	100 m/z	Set Capillary	4500 V	Set Dry Gas	2.0 l/min
Scan End	3000 m/z	Set End Plate Offset	-500 V	Set Divert Valve	Waste



#	RT [min]	Area	Int. Type	I	S/N	Chromatogram	Max. m/z	Area Frac. %
1	2.30	9.8445	Manual	243	126.2	UV Chromatogram, 220 nm	0.0000	0.34
2	2.65	2917.7354	Chromatogram	2077	2438.7	UV Chromatogram, 220 nm	0.0000	99.66
n.a.	2.66	n.a.	Average spectrum	n.a.	n.a.	n.a.	454.0628	n.a.
n.a.	2.70	n.a.	Average spectrum	n.a.	n.a.	n.a.	454.0628	n.a.