

CAROLINA



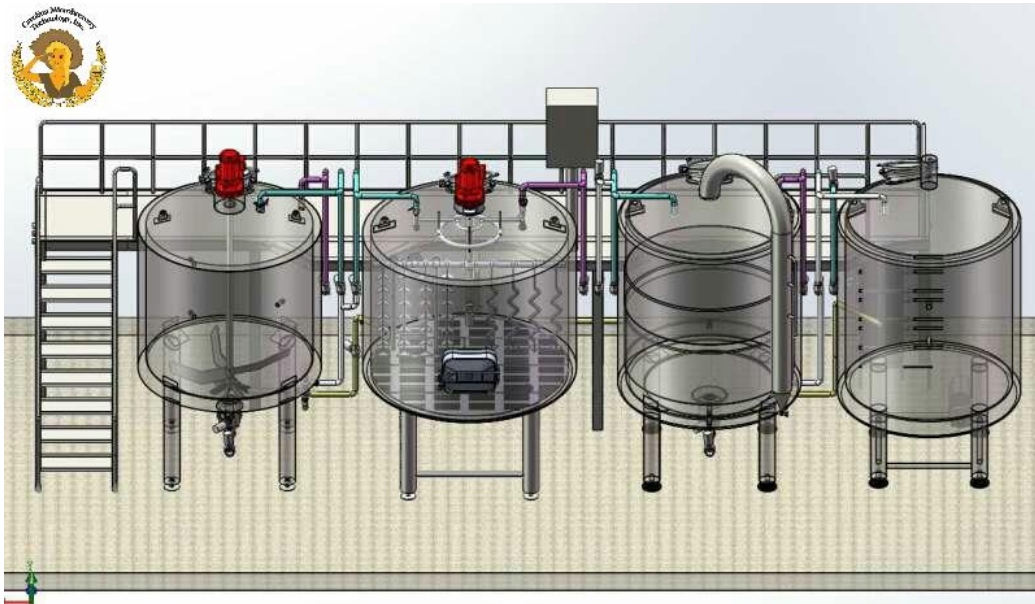
Brewtech LLC



FEATURES:

- Mash tun vessel
- Lauter tun vessel
- Brew kettle vessel
- Whirlpool tank vessel
- UL listed motor with mash rake
- UL listed VFD pumps
- Heat exchanger with wort aeration assembly.
- Stainless steel brewhouse work platform & stairs
- CIP assembly
- RTD sensor ports
- Sparge ring with sprayers
- Wort sight glass/grant
- Complete sanitary SS hard piping
- Necessary tri-clamp fittings and 1.5" butterfly valves (DIN fitting optional)
- Steam jacketed/gas fired/electric heating available
- Grist case/hopper (Optional)
- External wort grant(Optional)
- Hop back(Optional)
- Brew kettle condensate collector(Optional)

CAROLINA BREWTECH LLC



Terms:

- * Production started after 30% of total amount received as deposit.
- * Balance should be paid before shipping.

Shipping:

- * FOB Ningbo port
- * Around 20days to west coast of US 30days to east coast.



CAROLINA BREWTECH LLC

Warranty:

*3 Years warranty for non-man caused damages of stainless steel vessels

*1 Year warranty for all electronic parts and components.



CAROLINA BREWTECH LLC

Production:

*All the equipment is designed and produced from our self-owned factory in Ningbo, China. Our technical team is led by brewers, engineers and technicians with decades of professional experience in the industry.

