



Aquatic Macroinvertebrate

IDENTIFICATION

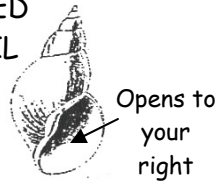
GROUP ONE-Sensitive to Pollutants

CADDISFLY LARVA



Abundance indicates good water quality

GILLED SNAIL

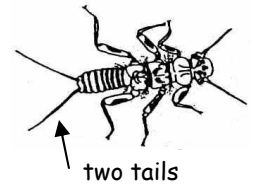


Opens to your right

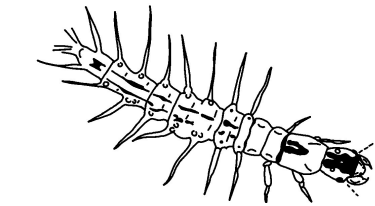


WATER PENNY BEETLE LARVA

STONEFLY NYMPH



two tails

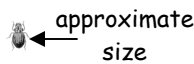


DOBSONFLY LARVA (HELLGRAMMITE)



RIFFLE BEETLE

enlarged



approximate size



three tails

MAYFLY NYMPH



three tails

GROUP TWO-Somewhat Sensitive to Pollutants

Capable of surviving in a wide range of water conditions

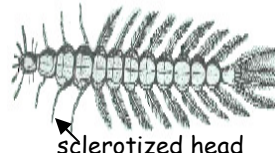
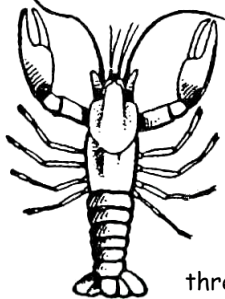


SOWBUG



CLAM

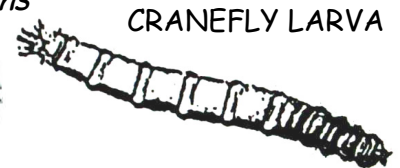
CRAYFISH



sclerotized head



BEETLE LARVA



CRANEFLY LARVA



DRAGONFLY NYMPH

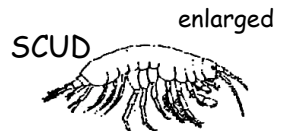
internal gills



three external gills



DAMSELFLY NYMPH



enlarged

SCUD



approximate size

GROUP THREE-Very Tolerant to Pollutants

Abundance indicates poor water quality



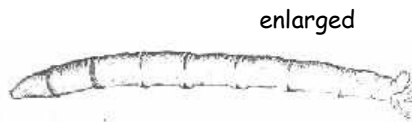
LEECH



BLACKFLY LARVA

enlarged

bulbous end



enlarged



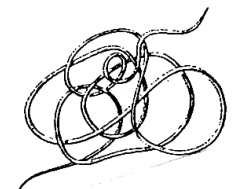
approximate size

MIDGE LARVA

Opens on your left side



POUCH SNAIL



AQUATIC WORM