

TRADELENS

Jornada IIE
Madrid, 27 de mayo de
2019

Santiago Bollain
sbollainp@es.ibm.com



EL COMERCIO INTERNACIONAL ES INEFICIENTE, COMPLEJO, INSEGURO Y COSTOSO

Data trapped in organizational silos

Information is held in paper and various digital formats across dozens of service providers along the supply chain, requiring complex, cumbersome, and costly peer-to-peer messaging. The result is inconsistent information across organizational boundaries, latency in obtaining shipment visibility, and blind spots that hinder the efficient flow of goods.

Manual, time-consuming, paper-based processes

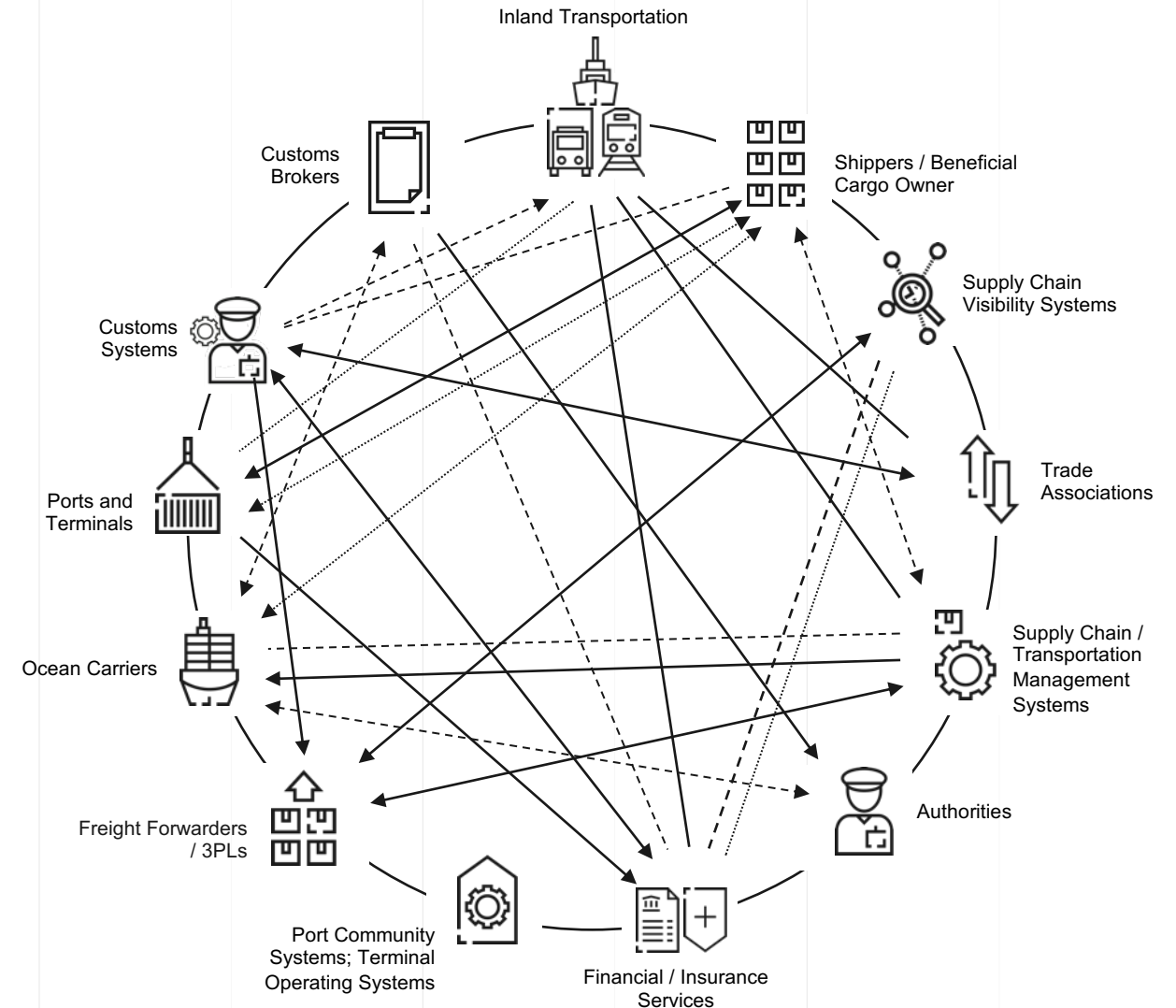
The collection and processing of up-to-date data, as well as inefficient trade document exchange, requires manual checks and frequent follow-ups and results in errors, delays and high compliance costs. Late filings are common due to missing information.

Clearance takes too long and is often subject to fraud

Risk assessments by customs authorities lack sufficient and trusted information resulting in high inspection rates, added prevention measures against fraud and forgery, and delayed customs clearance.

High costs and poor customer service

These challenges have significant downstream repercussions. The inability to forecast and plan effectively, address supply chain disruptions in real-time, and share trusted information across the supply chain leads to excessive safety stock inventory, high administrative costs, operational challenges, and ultimately poor customer service.



PLATAFORMA TRADELENS

Digitalizando la cadena de suministro global

Connects the ecosystem

Brings together all parties in the supply chain - including traders, freight forwarders, inland transportation, ports and terminals, ocean carriers, customs and other government authorities, and others - onto a Blockchain-based platform with a secure permission and identity framework

Drives true information sharing

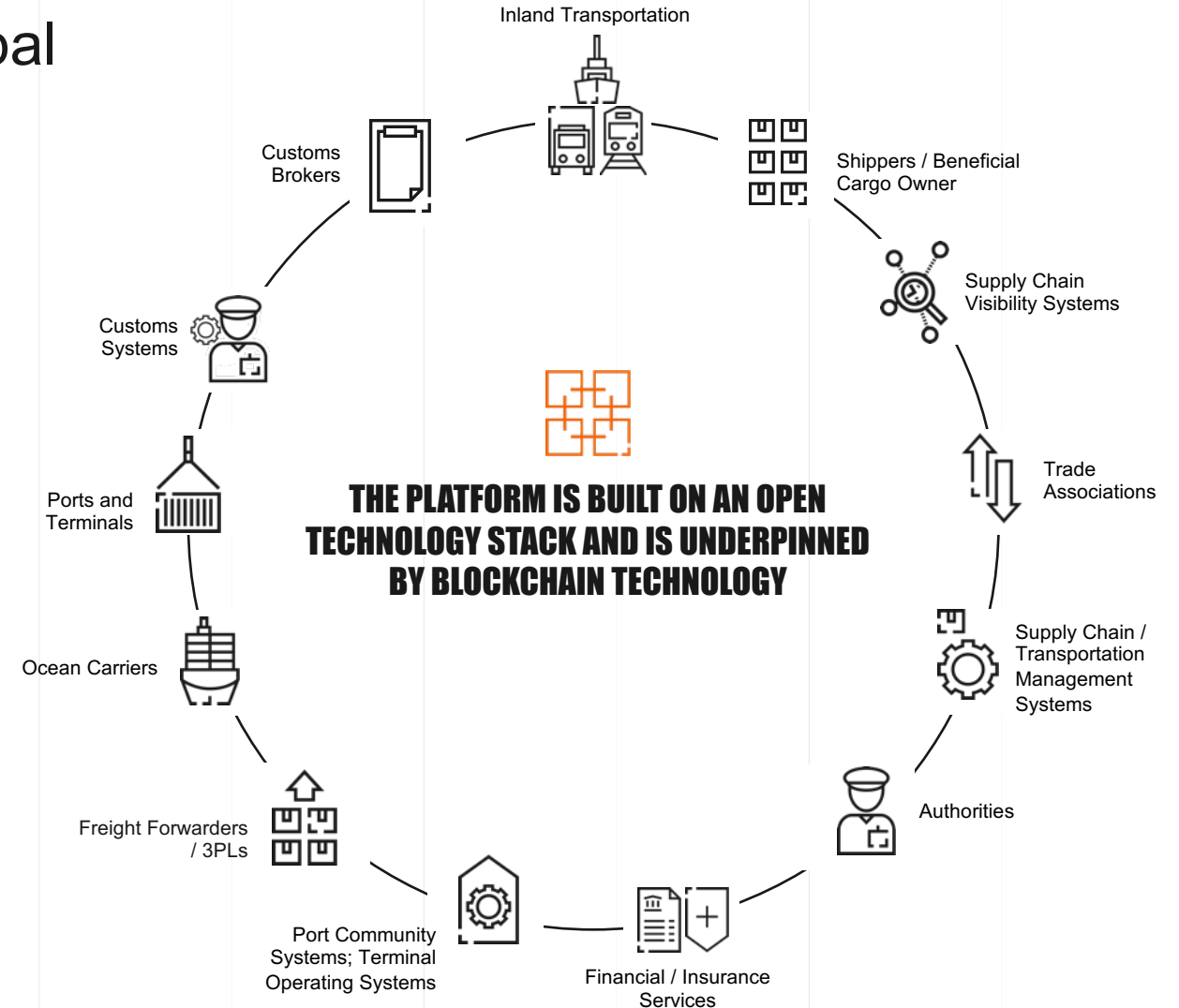
Provides for the seamless, secure sharing of real-time, actionable supply chain information across all parties to a trade - encompassing shipping milestones, cargo details, trade documents, the structured data embedded in trade documents, customs filings, sensor readings, and more

Fosters collaboration and trust

Enables the digitization and automation of the cross-organization business processes integral to global trade, including import and export clearance, with Blockchain ensuring secure, auditable, and non-repudiable transactions

Spurs innovation

Lays the foundation for ongoing improvement and innovation through an open, non-proprietary API, the use of standards and promotion of interoperability, and the launch of an Applications Marketplace that parties can use to build and deploy TradeLens-powered applications for themselves, their partners, and their customers



Digitalización del comercio global



¿Qué?

Flujo seguro de la documentación necesaria para mejorar el comercio internacional



¿Cómo?

Visibilidad de un registro compartido



¿Beneficios?

Incrementa la velocidad y la transparencia de las transacciones con información en tiempo real al estado de los contenedores

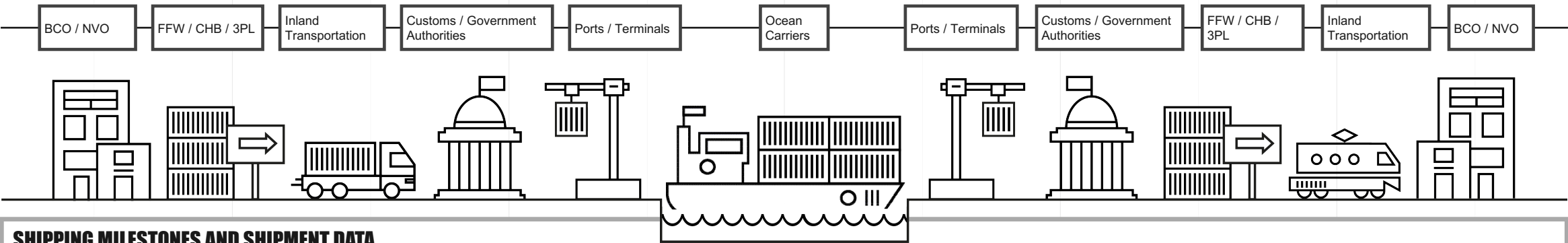
Reduce coste y aumenta la eficiencia del comercio al eliminar el papel.

En enero de 2018, IBM y Maersk anuncian un acuerdo para mejorar el comercio internacional y digitalizar las cadenas de suministro

Objetivos y premisas

- Desarrollar una plataforma de estándares abiertos sobre tecnología basada en blockchain
- Mayor transparencia en el transporte de bienes a nivel global
- Beneficio para todos los participantes
- Estandarización de las Comunicaciones, mejora de transparencia y reducción de ineficiencias.



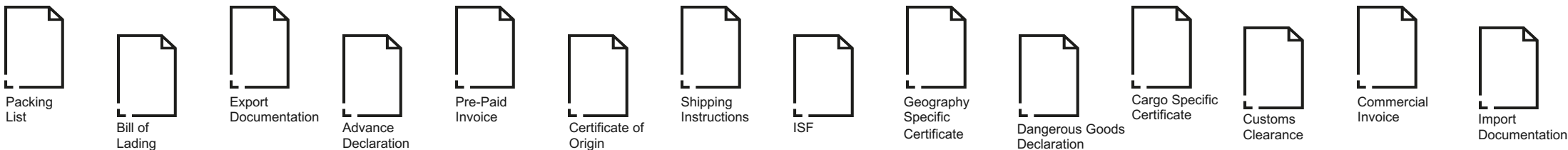


SHIPPING MILESTONES AND SHIPMENT DATA



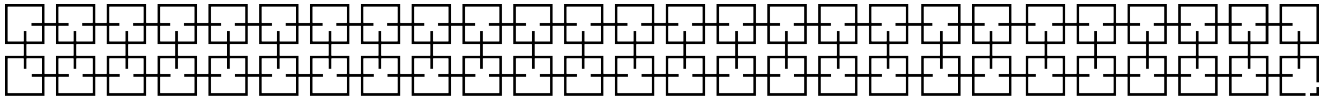
Not exhaustive list of milestones managed by platform

STRUCTURED AND UNSTRUCTURED DOCUMENTS



Not exhaustive list of documents managed by platform

TRADELENS BLOCKCHAIN BUSINESS NETWORK



CURRENT NETWORK STATUS – AS OF APRIL 2019

Shipping Events

+ 500M per year + 10M per week

- **Live:** The Network Member is connected to the Platform and providing data
- ◎ **In Process:** The Network Member engaged and/or integration is in process
Some members engaged under Early Adopter Program and/or trial agreements

Ports and Terminals

Terminal Location	Operator	Status	Terminal Location	Operator	Status	Terminal Location	Operator	Status
Algeciras, Spain	Port of Algeciras	◎	Hong Kong	Modern Terminals	●	Onne, Nigeria	APM Terminals	●
Algeciras, Spain	APM Terminals	●	Houston, TX USA	Port of Houston	●	Philadelphia, PA USA	Packer Terminals	●
Apapa, Nigeria	APM Terminals	●	Hull, UK	MCP	●	Pipavav, India	APM Terminals	●
Auckland, New Zealand	PortConnect	●	Immingham, UK	MCP	●	Pecem, Brazil	APM Terminals	●
Avonmouth, UK	MCP	●	Itajai, Brazil	APM Terminals	●	Pyeongtaek, South Korea	KL-NET	●
Bahrain	APM Terminals	●	Incheon, South Korea	KL-NET	●	Poti, Georgia	APM Terminals	●
Barcelona, Spain	Port of Barcelona	◎	Izmir, Turkey	APM Terminals	●	Pohang, South Korea	KL-NET	●
Bilbao, Spain	Port of Bilbao	●	Kwangyang, South Korea	KL-NET	●	Pusan, South Korea	KL-NET	●
Brisbane, Australia	Patrick Terminals	●	Lazaro, Mexico	APM Terminals	●	Santos, Brazil	APM Terminals	◎
Buenos Aires, Argentina	APM Terminals	●	Liverpool, UK	MCP	●	Sydney, Australia	Patrick Terminals	●
Busan, South Korea	Port of Busan	◎	Los Angeles, CA, USA	APM Terminals	●	Singapore, Singapore	PSA	●
Callao, Peru	APM Terminals	●	Maasvlakte II, Netherlands	APM Terminals	●	Tangier, Morocco	APM Terminals	●
Cotonou, Benin	APM Terminals	●	Manila, Philippines	ICTSI	◎	Tauranga, NZ	PortConnect	●
Elizabeth, NJ, USA	APM Terminals	◎	Melbourne, Australia	Patrick Terminals	●	Teesport, UK	MCP	●
Felixstowe, UK	MCP	●	Montreal, Canada	MGTP	●	Ulsan, South Korea	KL-NET	●
Fremantle, Australia	Patrick Terminals	●	Mobile, AL USA	APM Terminals	●	Valparaiso, Chile	TSP	●
Gothenburg, Sweden	APM Terminals	●	Mumbai, Brazil	APM Terminals	◎	Valencia, Spain	Port of Valencia	●
Grangemouth, UK	MCP	●	Napier, NZ	Napier Port Authority	●	Visakhapatnam, India	JM Baxi	◎
Gunsan, South Korea	KL-NET	●	Newcastle, UK	MCP	●	Xiamen, China	Port of Xiamen	◎
Halifax, Canada	Halterm Canada	●						

Ocean Carriers

Ocean Carrier / Short Sea	Status
Maersk Line	●
Safmarine	●
Sealand	●
Hamburg-Sud	◎
Pacific International Lines	◎
KMTC	◎
Seaboard	◎
Namsung	◎
Boluda Lines	◎

Government Authorities

Authority	Status
Australia Home Affairs	◎
Bahrain Customs	◎
Canada Customs	◎
Dutch Customs	◎
Ghana / GCNET	◎
Saudi Arabia Customs	◎
Peru Customs	◎
Singapore Customs	◎
Turkey Customs	◎

Inland Transportation

Transportation Provider	Status
Ancotrans	●
CN Rail	◎
IMCC	●

EVENTOS EN TRADELENS

SHIPMENT PLANNING

ORIGIN INTERMODAL

EXPORT COMPLIANCE

ORIGIN PORT

OCEAN TRANSPORT

IMPORT COMPLIANCE

DESTINATION PORT

DESTINATION INTERMODAL

Event	Source	Event	Source	Event	Source	Event	Source	Event	Source	Event	Source	Event	Source	Event	Source
Start Consignment Tracking	Carrier, 3PL	Packing List Available	Shipper, 3PL	Export Documentation Submitted	Customs broker	Planned Gate In	Carrier	Planned Vessel Departure	Carrier	Advance Declaration Submitted	Carrier	Estimated Discharge from Vessel	Terminal	Estimated Loading on Truck	Terminal, 3PL, Trucker
Consignment Reference Added	Shipper, 3PL	Planned Gate Out	Carrier	Export Documentation Approved	Customs	Estimated Gate In	Terminal, 3PL, Trucker	Estimated Vessel Departure	3PL, Carrier	Advance Declaration Approved	Customs	Actual Discharge from Vessel	Terminal	Actual Load on Truck	Terminal, 3PL, Trucker
Party Added to Consignment	Carrier, 3PL	Actual Gate Out	Terminal, Trucker	Customs Release	Customs	Actual Gate In	3PL, Trucker, Terminal	Actual Vessel Departure	Terminal, Carrier	Import Documentation Submitted	3PL	Full Container Not Selected for Inspection	Customs	Planned Gate Out	Carrier
Start Transport Equipment Tracking	Carrier	Estimated Loaded on Truck	Carrier, Shipper, 3PL	Dangerous Goods Declaration Submitted	Shipper	Estimated Discharge from Truck	3PL, Trucker, Terminal	Planned Vessel Arrival	Carrier	Import Documentation Approved	Customs	Full Container Passed Inspection	Customs	Estimated Gate Out	Terminal, Trucker, 3PL
New Transport Equipment Added to Consignment	Carrier	Actual Load on Truck	Carrier, Trucker, 3PL	Dangerous Goods Request Approved	Carrier	Actual Discharge from Truck	3PL, Trucker, Terminal	Estimated Vessel Arrival	Carrier, 3PL	Customs Release	Customs	Full Container Selected for Scan	Customs	Actual Gate Out	Terminal, Trucker, 3PL
Transport Equipment Number Updated	Carrier	Planned Gate In	Carrier	VGM Submitted	Shipper, 3PL	Estimated Rail / Barge Arrival	3PL, Rail, Barge	Actual Vessel Arrival	Carrier, Terminal	Carrier Release	Carrier	Estimated Loading on Truck	Terminal	Estimated Gate In	Terminal, 3PL, Trucker
Shipper Updated	Shipper, 3PL	Estimated Gate In	3PL, Trucker, Terminal	Geography Specific Certificate Submitted	3PL	Actual Rail / Barge Arrival	Rail, Barge, Terminal	Estimated Loading on Vessel	Terminal, Carrier	Certificate of Origin Available	3PL	Actual Load on Truck	Terminal, Trucker, 3PL	Actual Gate In	Terminal, 3PL, Trucker
Consignee Updated	Shipper, 3PL	Actual Gate In	3PL, Trucker, Terminal	Geography Specific Certificate Approved	Customs	Estimated Discharge from Rail / Barge	Rail, Barge, Terminal	Actual Load on Vessel	Terminal, Carrier	Cargo Specific Certificate Submitted	3PL	Estimated Gate Out	Terminal, Trucker, 3PL	Estimated Discharge from Truck	3PL, Trucker, Terminal
Cargo Type Updated	Shipper, 3PL	Estimated Discharge from Truck	3PL, Trucker, Terminal			Actual Discharge from Rail / Barge	Rail, Barge, Terminal	Bill of Lading Available	Carrier	Cargo Specific Certificate Approved	Customs	Actual Gate Out	Terminal, Trucker, 3PL	Actual Discharge from Truck	3PL, Trucker, Terminal
Shipping Instructions Submitted	Shipper, 3PL	Estimated Stuffing Start	3PL, Shipper			Estimated Loading on Vessel	Terminal	Estimated Discharge from Vessel	Terminal, Carrier			Estimated Loading on Rail / Barge	Terminal, Rail, Barge, 3PL	Actual Load on Rail / Barge	Rail, Barge
		Actual Stuffing Started	3PL, Shipper			Do Not Load	Carrier, Terminal, Customs	Actual Discharged from Vessel	Terminal, Carrier			Actual Load on Rail / Barge	Terminal, Rail, Barge	Estimated Rail / Barge Departure	3PL, Rail, Barge
		Estimated Container Stuffed	3PL, Shipper					Shift-Cell	Terminal			Estimated Rail / Barge Departure	Terminal, Rail, Barge, 3PL	Actual Rail / Barge Departure	Rail, Barge
		Actual Container Stuffed	3PL, Shipper					Shift-Pier	Terminal			Actual Rail / Barge Departure	Terminal, Rail, Barge	Estimated Rail / Barge Arrival	3PL, Rail, Barge
		Full Transport Equipment Sealed	Shipper									Terminal Release	Terminal	Actual Rail / Barge Arrival	3PL, Rail, Barge
		Estimated Loading on Rail / Barge	3PL, Rail			Actual Load on Vessel	Terminal, Carrier					Carrier Release	Carrier	Estimated Discharge from Rail / Barge	Rail, Barge
		Actual Load on Rail / Barge	Rail, Barge											Actual Discharge from Rail / Barge	Rail, Barge
		Planned Rail / Barge Departure	3PL, Rail, Barge											Seal(s) Removed	Shipper, 3PL
		Actual Rail / Barge Departure	Rail, Barge											Container Stripped	Shipper, 3PL
		Estimated Discharge from Rail / Barge	Rail, Barge											End Shipment Tracking	Shipper, 3PL
		Actual Discharge from Rail / Barge	Rail, Barge												

Full API Event documentation:
<https://platform-sandbox.tradelens.com/documentation/swagger/>

DOCUMENTOS EN TRADELENS

- ◉ Trade documents are associated with shipments, containers and consignments in a distributed and shared repository. Eliminates endless file, folder and email searching for information.
- ◉ Version control, each time a document is edited/uploaded, a new version of the document is created and added to the repository. Eliminates multiple copies and inconsistency of latest version.
- ◉ Tradelens uses Blockchain to guarantee the immutability and traceability of documents. Eliminates lost documents and assists with dispute resolution.
- ◉ Self-service documents on demand. Network participants defined to a consignment can immediately access document information, never having to wait for the document to be sent again.
- ◉ Unified permissions model based on international standards. Participants defined to the consignment will have access rights based on default permissions.

DOCUMENTS SUPPORTED AT GA

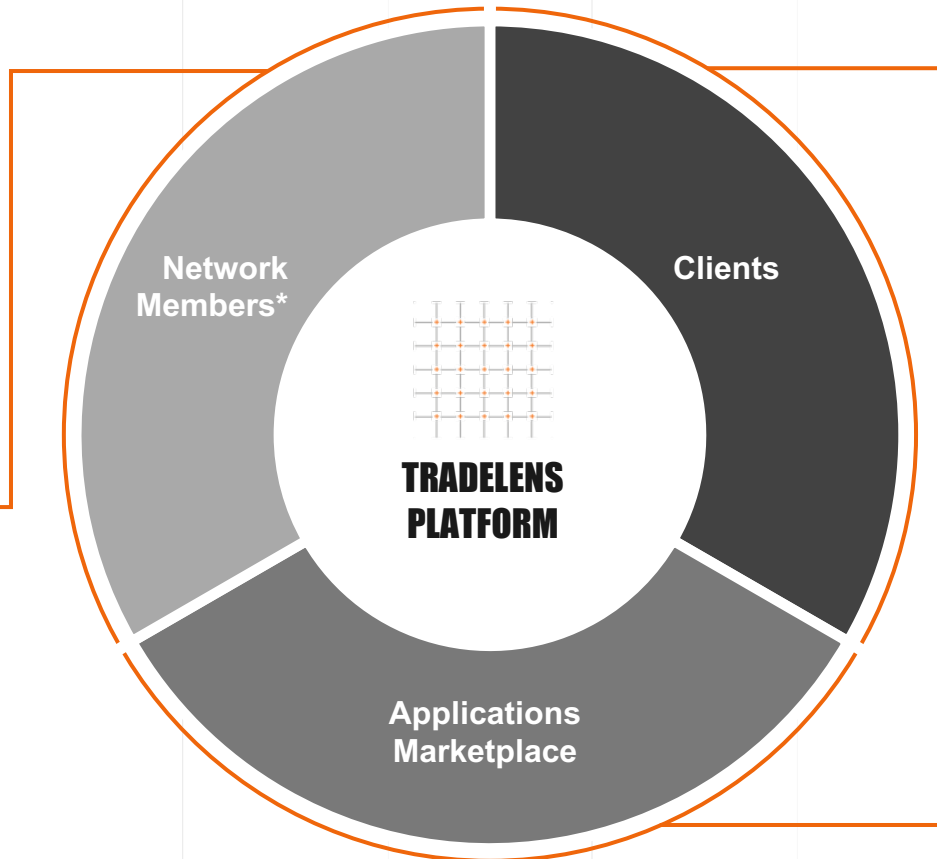
Sea Waybill
Commercial Invoice
Packing List
Booking Request
Booking Confirmation
Shipping Instructions
Export Declaration
Bill of Lading
Pro-Forma Invoice
Arrival Notice
Import Declaration
Health Certificate
Phytosanitary Certificate
Veterinary Certificate
Fumigation Certificate
Inspection Certificate
Certificate of Analysis
Certificate of Origin
Dangerous Goods Declaration

Documents in orange are supported as structured data; others to be added according to continuous delivery priorities and client requirements

EL ECOSISTEMA DE TRADELENS

Provide and gain access to end-to-end supply chain information

- ◉ Ocean carriers
- ◉ Ports and terminals
- ◉ Government authorities
- ◉ Inland transportation
- ◉ Freight forwarders / 3PLs
- ◉ 3rd party data providers



Primary consumers and beneficiaries of the platform

- ◉ Shippers (BCOs, retailers, manufacturers, etc.)
- ◉ Freight forwarders, customs brokers, 3PLs
- ◉ Financial institutions

Offer value added services to the ecosystem through a platform marketplace

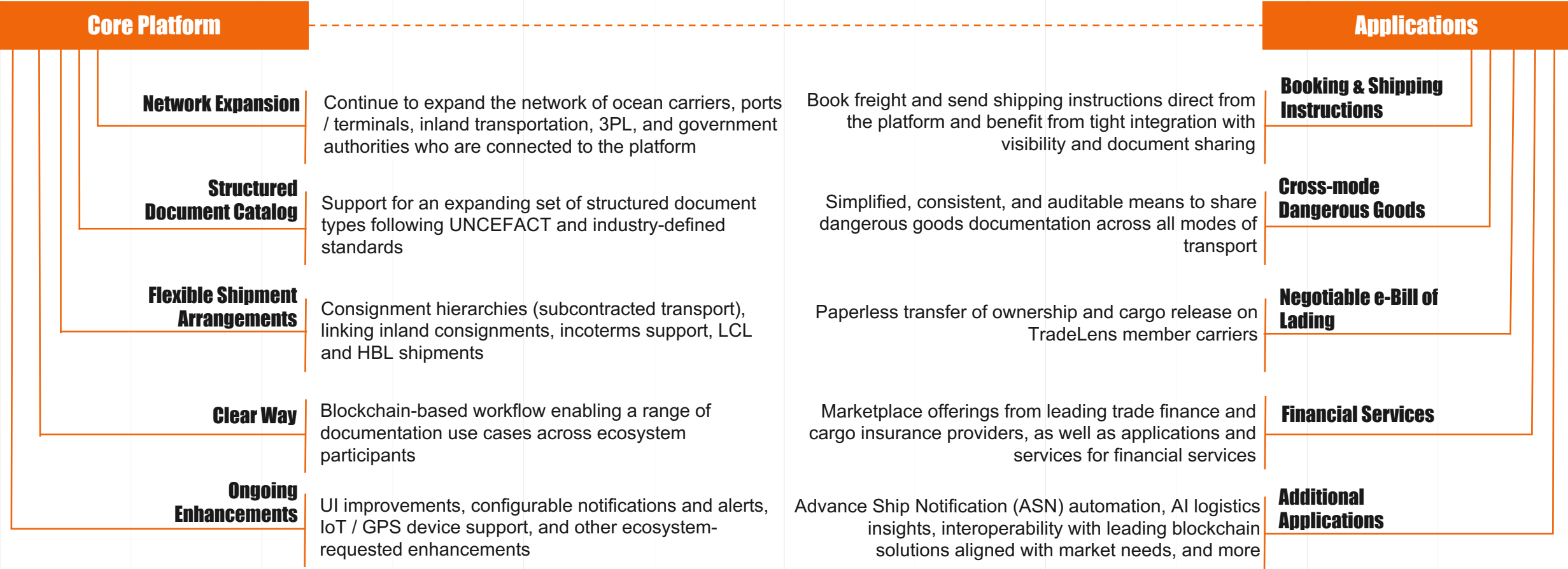
- ◉ TradeLens offerings
- ◉ Offerings from Network Members and Clients
- ◉ Offerings from third parties

* Others in transport and logistics ecosystem who are not Network Members also provide data to the platform, as requested by TradeLens Clients

TRADELENS FUTURE

1 – 2 YEAR OUTLOOK (SUBJECT TO CHANGE)

The TradeLens platform is developed using an Agile methodology and will continue to expand and improve over time. Our roadmaps are subject to change based on market feedback, input from participants, and validated learning.



IBM's statements regarding its plans, directions, and intent are subject to change or withdrawal without notice at IBM's sole discretion. Information regarding potential future products is intended to outline our general product direction and it should not be relied on in making a purchasing decision. The information mentioned regarding potential future products is not a commitment, promise, or legal obligation to deliver any material, code or functionality. Information about potential future products may not be incorporated into any contract. The development, release, and timing of any future features or functionality described for our products remains at our sole discretion.

Beneficios de Tradelens

Reducción de tiempo de Localización de contenedores /bienes

Información en tiempo real

Mejora el Control de inventario

Mejora en la transparencia de la información en toda la cadena integrando toda la información de origen a destino

Protección del valor de marca y o producto

Reducción del fraude

Mejora la flexibilidad ante cambios regulatorios

Reducción de disputas

MUCHAS GRACIAS

Santiago Bollaín
sbollainp@es.ibm.com

