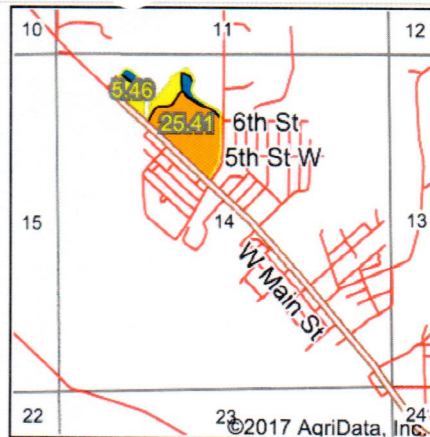
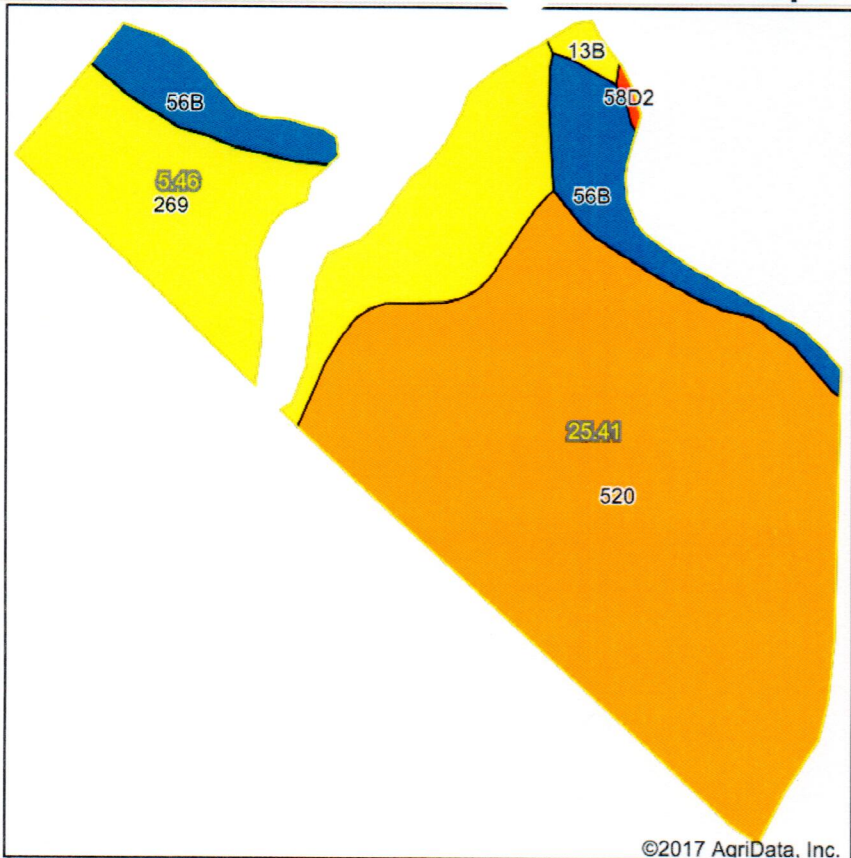


# Soils Map - South Table



State: **Iowa**  
 County: **Wapello**  
 Location: **11-72N-14W**  
 Township: **Center**  
 Acres: **30.87**  
 Date: **9/13/2017**



Soils data provided by USDA and NRCS.

©2017 AgriData, Inc.

© AgriData, Inc. 2017 www.AgriDataInc.com

Area Symbol: IA179, Soil Area Version: 24

Code	Soil Description	Acres	Percent of field	CSR2 Legend	Non-Irr Class *c	CSR2**	CSR
520	Coppock silt loam, 0 to 2 percent slopes, occasionally flooded	19.81	64.2%		IIw	79	65
269	Humeston silt loam, 0 to 2 percent slopes, occasionally flooded	7.65	24.8%		IIIw	70	58
56B	Cantril loam, 2 to 5 percent slopes	3.11	10.1%		Ile	81	65
13B	Humeston-Vesser-Colo complex, 2 to 5 percent slopes	0.23	0.7%		IIIw	68	60
58D2	Douds loam, 9 to 14 percent slopes, moderately eroded	0.07	0.2%		IVe	44	28
<b>Weighted Average</b>						<b>76.8</b>	<b>63.1</b>

\*\*IA has updated the CSR values for each county to CSR2.

\*c: Using Capabilities Class Dominant Condition Aggregation Method

Soils data provided by USDA and NRCS.