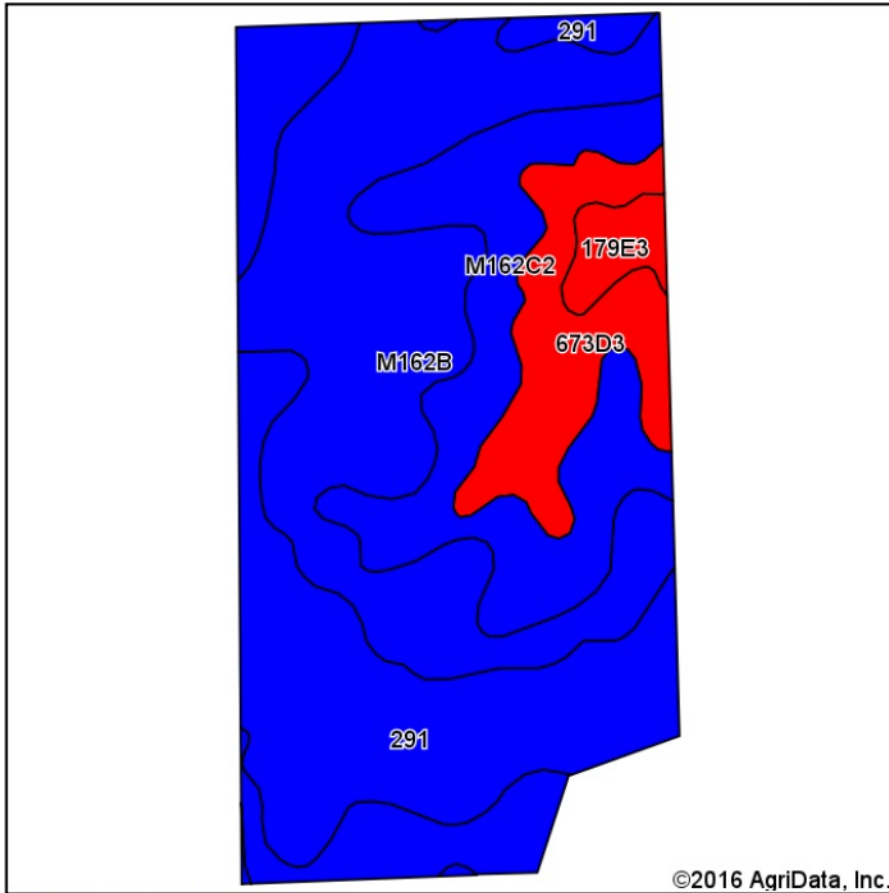
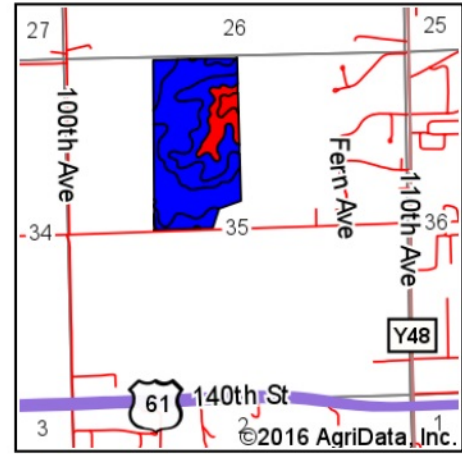


Soils Map



Soils data provided by USDA and NRCS.



State: Iowa
 County: Scott
 Location: 35-78N-2E
 Township: Blue Grass
 Acres: 77.07
 Date: 1/11/2017



Area Symbol: IA163, Soil Area Version: 24

| Code | Soil Description | Acres | Percent of field | CSR2 Legend | Non-Irr Class *c | CSR2** | CSR |
|-------------------------|--|-------|------------------|-------------|------------------|-------------|-----------|
| M162B | Downs silt loam, till plain, 2 to 5 percent slopes | 31.19 | 40.5% | | Ile | 90 | |
| 291 | Atterberry silt loam, 0 to 2 percent slopes | 18.51 | 24.0% | | Iw | 90 | 95 |
| M162C2 | Downs silt loam, till plain, 5 to 9 percent slopes, eroded | 17.69 | 23.0% | | IIle | 82 | |
| 673D3 | Timula silt loam, 9 to 14 percent slopes, severely eroded | 7.91 | 10.3% | | IVe | 20 | 50 |
| 179E3 | Gara clay loam, 14 to 18 percent slopes, severely eroded | 1.77 | 2.3% | | VIe | 28 | 30 |
| Weighted Average | | | | | | 79.6 | *- |

Area Symbol: IA163, Soil Area Version: 24

**IA has updated the CSR values for each county to CSR2.

*- CSR weighted average cannot be calculated on the current soils data, use prior data version for csr values.

*c: Using Capabilities Class Dominant Condition Aggregation Method

Soils data provided by USDA and NRCS.