



# Tram Service Changes

## Industrial action – Thursday 10 September

Due to planned industrial action on Thursday 10 September, services are expected to be significantly disrupted from 9am up to 3pm. Between 10am and 2pm, trams will not operate.

### Alternative travel options:



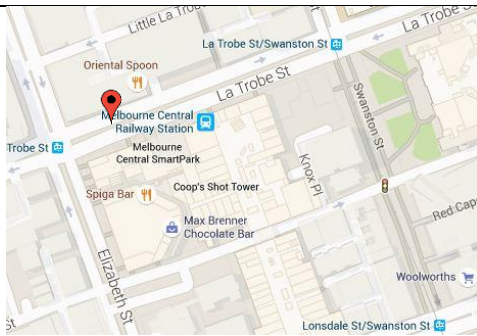
**East Coburg –  
Melbourne Central Station  
connecting with trains**



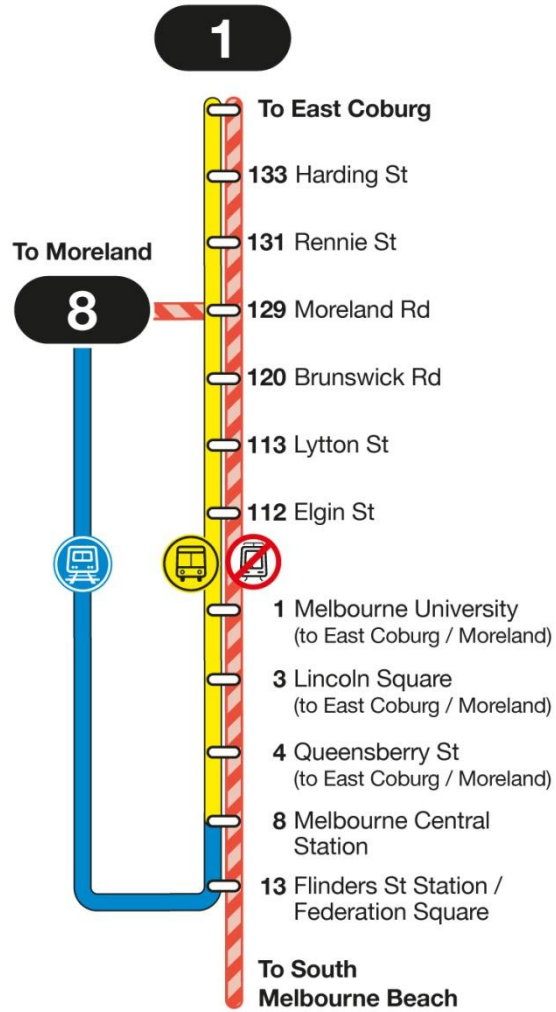
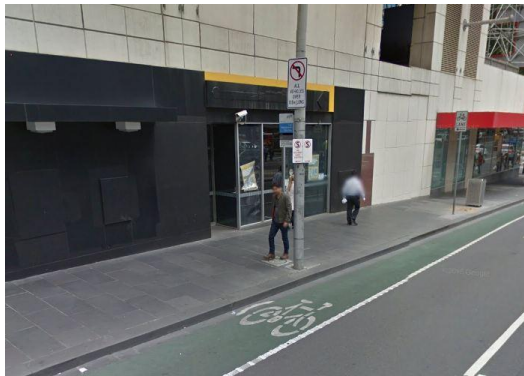
**Every 6-12 minutes**



**Key bus stop location:  
Melbourne Central Station**



**La Trobe St near  
Melbourne Central Station**



*At accessible platform stops and some safety zone stops, tram replacement buses will stop as close as possible to the normal stop at nearby tram/bus stops or near the footpath*

Time of the last and first trip from terminus to terminus. Trams will operate after this time, but the length of their trip will vary to ensure trams are in the depots by 10am.

Route	Destination	Last tram - am	First tram - pm
1	to East Coburg	8:25-9:17	2:56-3:51
	to South Melbourne	7:35-8:30	2:19-3:12

To plan your journey refer to web [yarratrams.com.au](http://yarratrams.com.au)  
twitter @yarratrams  
phone 1800 800 007 (6am-midnight daily)



Route 1&8 North Bus CB