

Identity Management

A flexible authentication mechanism combined with AD, LDAP, POP3, or RADIUS to ensure granting the right level of network access to users and devices.

WhiteList Auto-Learning

This feature enables the admin to obtain or learn WhiteList from various sources in different environments.

Auto-Block/Alerts

The system denies or limits network access based on the configured security policies. A real time warning dialog details the reason of a block.

Flexible Deployment & Dashboard Management

The solution is deployed out-of-brand and according to your networking needs without requiring big change to the existing network configuration. The MAC-based enforcement management is strengthened by using a verification of IP or Host Name or User ID to comprise multi-verification combinations.

Customization

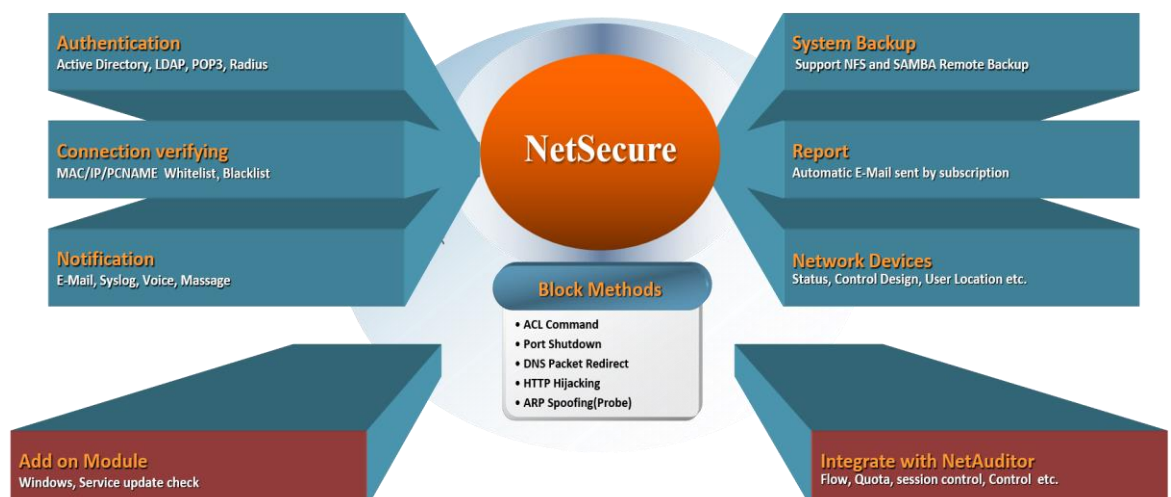
The captive portal page allows users to upload images and create a custom layout .



Internet brings us convenience, information and entertainment, but on the other hand, also leaves us vulnerable to information exposure. With the continued presence of Internet worms, viruses, malware and other threats, how we can make use of the network resources without compromising the security becomes a big challenge.

Most of the existing solutions are focused on facing the challenge of network prevention and/or protection against outside attacks such as virus, worms, Trojan and so on, and take countermeasures accordingly, through a firewall, IDS antivirus, antispam, IDP, or UTM system, to control and block the internet in/out traffic that poses a threat to the security. Nevertheless, an intranet threat could cause even more damages than the Internet.

Eye on the intranet issues, EQIT has developed NetSecure to help manage the Intranet access via IP-MAC based control, user authentication or other methods. Without a redesign of the company's existing infrastructure, NetSecure provides a full control over your IP/MAC access points in your network and enforces centrally defined policies in real-time with the ability to block or quarantine suspicious or rogue devices from communicating through the network by various effective blocking technologies. Audit logs, access/incident reports are available to serve the purposes of monitoring and auditing.



Advanced Verification Rule (Extended Module)

Additional verification processes, such as Windows Services, Client Port, Windows Update, Symantec DLP, TrendMicro OfficeScan, Host Name verification or Flow Quota, can be adopted to enhance the security.

A full Intranet access control by leveraging layer 3 switches

Guest System

It allows visitors to access the network, but compliant with the company's security policy.

Role-Based Privilege Management

An independent interface is especially designed for each to perform its own duties.

Reliability & Security

With the brand new and secure kernel module, data transmitted with the protection of SSL and digital signature.

UI available in both English and Chinese

Multiple Enforcement

Mechanisms: Port Shutdown, HTTP Hijacking, DNS Spoofing, ARP Spoofing and so on...

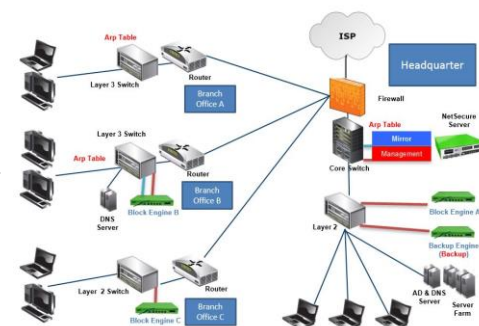
Extended Modules

- **Block Engine (Stand alone):** An optional module for a distributed block scheme. Multiple block mechanisms available such as Port Shutdown, Redirect(DNS & TCP), ARP Spoofing...
- **N+1 Structure:** An unique module, a good fit for a large/distributed network structure, needs only an extra appliance to complete the system backup. It greatly reduces the cost paid for the system backup and restore.
- **High Availability(HA):** A separated appliance or license can be purchased for purposes of disaster recovery and redundancy.

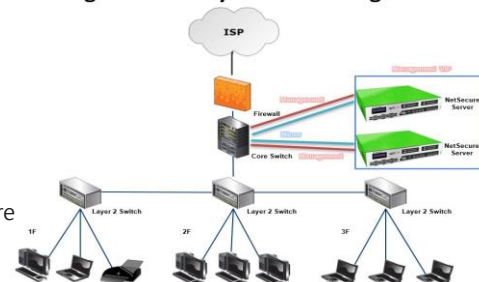
Benefits

- **Improve Information Security and Reduce Risks of Data Breaches**
 - By controlling of IP/MAC use and network access, NetSecure enforces intranet security management.
- **Improve productivity by reducing network downtime**
 - Forrester Research reports that 15% of overall downtime in enterprises is due to network issues, mainly caused by IP conflicts.
 - NetSecure effectively prevents unauthorized IP/MAC from accessing the network, reduces network downtime and maximizes network efficiency.
- **Regulatory Compliance**
 - NetSecure detects and documents every device that attempts to access the network and provides a solid documentation of the data security, privacy and integrity as well as of control process for purposes of compliance and auditing.

Distributed Structure Diagram



High Availability Structure Diagram



	Netsecure 3000IP	Netsecure 2000IP	Netsecure Block Engine
Specs	Xeon E5 CPU x 2	Xeon E5 CPU x 2	Xeon E3 CPU x 1
	32 GB RAM	16 GB RAM	8 GB RAM
	SAS 1 TB HD	SAS 1 TB HD	SATA 500 GB HD
	8 Port 100/1000 TX	8 Port 100/1000 TX	8 Port 100/1000 TX
	2U	2U	1U
	460W ATX (Power Redundant Supported)	460W ATX (Power Redundant Supported)	200W ATX
Price	USD\$ 58,000(tax excluded)	USD\$ 50,000(tax excluded)	USD\$ 44,000(tax excluded)

