

October 2019 Bluffton Branch Library

Browse all library system events at BeaufortCountyLibrary.org/calendar

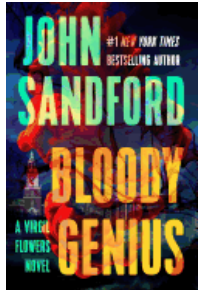
*T.E. : Ticketed Event
R.R. : Registration Required



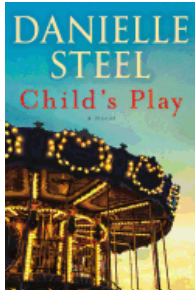
Sunday	Monday	Tuesday	Wednesday	Thursday	Friday	Saturday
		1 Storytime (3-5) 11 am	2 Library Closed Staff Work Day	3 Genealogy 101 10 am Storytime (0-3) 11 am Espression Creative Writing Group 4 pm	4	5
6	7 LEGO Robotics (8-12) 5:15 pm, *R.R.	8 Storytime (3-5) 11 am Literati Inc. 1 pm LEGO Robotics (8-12) 2:30 pm, *R.R. TAG Halloween Party (Teen) 5 pm	9 Anime Club (Teen) 4:30 pm	10 Storytime (0-3) 11 am Lit Wits 11 am Espression Creative Writing Group 4 pm	11 Little Hands Art Camp (18 mo. - 5) 10:30 am	12 Read to a Dog 11 am *R.R.
13	14	15 Storytime (3-5) 11 am Harry Potter Party (8-18) 4:30 pm, *T.E.	16 Bluffton Book Club 1 pm Anime Club (Teen) 4:30 pm	17 Storytime (0-3) 11 am Bring a Pumpkin to Paint (all ages) 3:30 pm Espression Creative Writing Group 4 pm	18 Half Day Matinee 2:30 pm	19
20	21 LEGO Club (5+) 5:30 pm	22 Storytime (3-5) 11 am Literary Alliance Book Club (Teen) 5 pm	23 STEAM Team (5-12) 3:30 pm, *T.E. Anime Club (Teen) 4:30 pm	24 Genealogy 101 10 am Storytime (0-3) 11 am Espression Creative Writing Group 4 pm	25	26
27	28 Make Your own Trick-or-Treat Bag (all ages) 3:30 pm	29 Storytime (3-5) 11 am Kids Bookclub (5+) 2:30 pm	30	31 Trick-or-Treat at the Library! (all ages) All Day Storytime (0-3) 11 am Espression Creative Writing Group 4 pm 		

Bluffton Branch 843.255.6501 | library@bcgov.net | 120 Palmetto Way, Bluffton, SC 29910 | BeaufortCountyLibrary.org
Mondays - Thursdays 9:00am-7:00pm | Fridays 9:00am - 5:00pm | Saturdays 10:00am-5:00pm

New Books October 2019



Publishes 10/1



Publishes 10/8



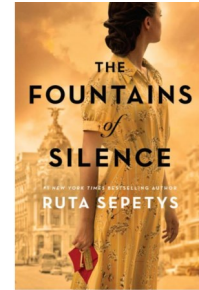
Publishes 10/15



Publishes 10/1



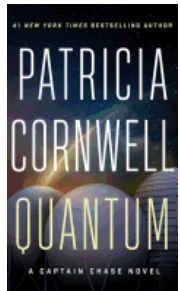
Publishes 10/1



Publishes 10/1



Publishes 10/15



Publishes 10/1



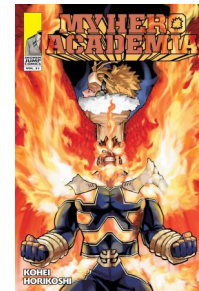
Publishes 10/7



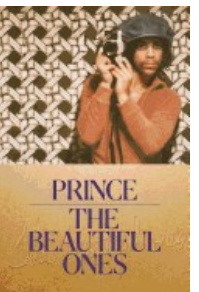
Publishes 10/15



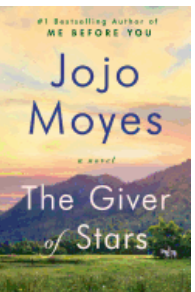
Publishes 10/15



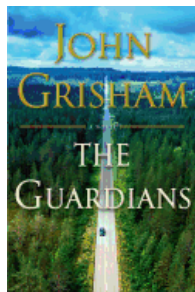
Publishes 10/1



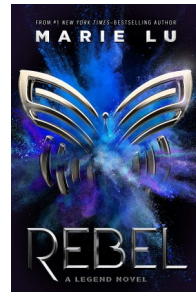
Publishes 10/29



Publishes 10/8



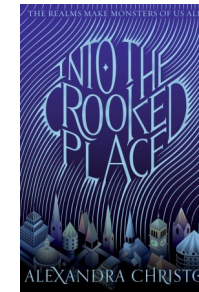
Publishes 10/15



Publishes 10/1



Publishes 10/1



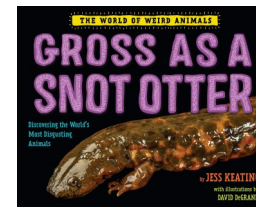
Publishes 10/18



Publishes 10/1



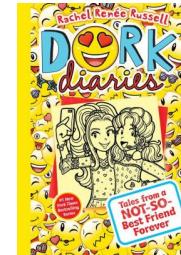
Publishes 10/22



Publishes 10/29



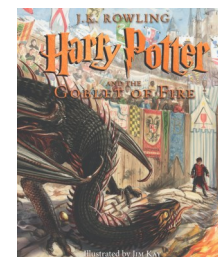
Publishes 10/1



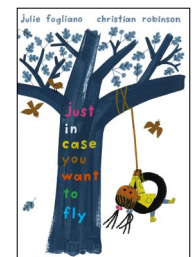
Publishes 10/22



Publishes 10/22



Publishes 10/8



Publishes 10/8

The publishing date and the book's arrival date at our library may differ.

For assistance, please contact your nearest Beaufort County Librarian at 843-255-6430 or BeaufortCountyLibrary.org/contact-us.