

PROMOTE PREVENT

PROMOTE PREVENT COMMISSION REPORT: A plan to promote mental, emotional, and behavioral health and to prevent issues like addiction, mental illness, and violence

Charge of Legislative Commission on Behavioral Health Promotion and Upstream Prevention

- ❖ Investigate evidence-based practices, programs and systems to prevent behavioral health disorders and promote behavioral health across the Commonwealth

Behavioral health issues lead to significant human suffering and financial costs:

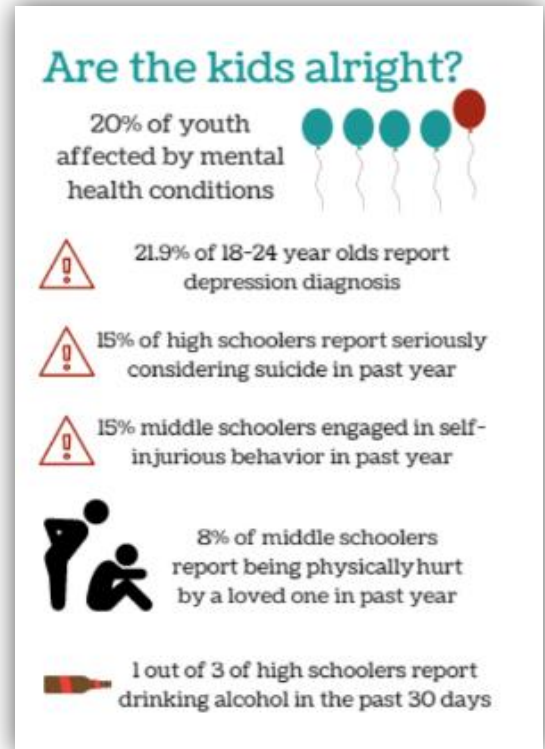
- 16,000+ fatal opiate overdoses since 2000
- 50% of students age 14 and older with a mental illness drop out of high school
- 40% of people with psychiatric conditions actually have two or more conditions
- 33% of Massachusetts prison inmates receive ongoing mental health services
- MA spends an estimated \$6-7 billion on behavioral health treatment services & prescriptions
- MassHealth spent \$1,414,123,546 on behavioral health services in FY2015

Prevention works but dollars flood downstream to after problems appear

- Decades of research and local practice prove the power of prevention and promotion
- Evidence-based initiatives can save individuals and families from tragedy, reduce the consequences and costs of issues, and promote positive social, emotional, & behavioral health
- Despite the evidence, key state agencies are spending less than 1% on prevention
- DMH & DPH spent less than \$15 million of their \$899 million budgets on prevention in FY2018

Steps for building prevention infrastructure

1. **PROMOTE** locally-led proven prevention and promotion in schools, homes, communities, and primary healthcare
2. **ADVANCE** local data driven decision-making to address community-level problems, risks, and protective factors
3. **FUND** promotion and prevention through public-private partnerships, marijuana dollars, & an opiate assessment
4. **EDUCATE & SUPPORT** educators, police, pediatricians, parents, and other caregivers in prevention & promotion



Learn More & Read the Full Report at PromotePrevent.com

PROMOTE PREVENT

PROMOTE PREVENT PRINCIPLES

- ✓ Act early and invest upstream
- ✓ Apply an integrated behavioral health approach
- ✓ Implement what works and apply the science of prevention
- ✓ Invest across the continuum: PROMOTION-PREVENTION-TREATMENT-RECOVERY
- ✓ Build the infrastructure for locally-led prevention and promotion
- ✓ Partner Interdisciplinary public and private stakeholders in prevention efforts

PROMOTE PREVENT COMMISSION SUMMARY OF RECOMMENDATIONS

- ❖ **INFUSE PREVENTION, PROMOTION, & RESULTS FIRST SCIENCE INTO STATE GOVERNMENT**
 - Employ data driven decision-making in the Legislature and State Agencies
 - Establish a permanent PromotePrevent Commission
 - Adopt standardized concepts for evidence-based decision making
- ❖ **INNOVATE TO FUND PROMOTION AND PREVENTION**
 - Establish public-private partnerships at the state and local-level
 - Direct revenues from the sale of cannabis to fund community-based prevention
 - Establish a Behavioral Health Promotion, Prevention, and Early Intervention Trust Fund (BeHaPPE Trust Fund)
 - Assess opiate manufactures and wholesalers to fund prevention and promotion
- ❖ **BUILDING PREVENTION INFRASTRUCTURE**
 - Strengthen and invest in community-level coalitions
 - Fund technical assistance for community prevention leaders
 - Support local youth commissions
 - Advance and encourage data collection on local behavioral health issues
- ❖ **INVESTING IN WHAT WORKS: EVIDENCE-BASED PREVENTION AND PROMOTION PROGRAMMING & SYSTEMS**
 - Invest in evidence-based programming, promote family economic stability, and reauthorize the Prevention and Wellness Trust Fund
- ❖ **PREVENTION WORKFORCE: SUPPORTING CAREGIVERS & INTEGRATING BEHAVIORAL HEALTH**
 - Advance behavioral health promotion and prevention education and support for law enforcement, healthcare staff, caregivers, and educators
 - Expand access to early intervention behavioral health services
- ❖ **PROMOTING BEHAVIORAL HEALTH IN SCHOOLS**
 - Advance social-emotional learning for new educators
 - Incorporate mental health promotion education into school health curriculums
 - Protect elementary students' access to opportunities for recess and free-play