

# STUDENT PATH

Any signs or symptoms of sickness? If so - do not come to class today.



Students enter through class door (A, B or C). Waiting rooms closed. Mask must be worn to enter.

All belongings must be secured in dance bag. This includes shoes, socks, extra mask and water.



Dancers will use hand sanitizer before entering studio.

Staff and dancers will remain 6 feet apart.

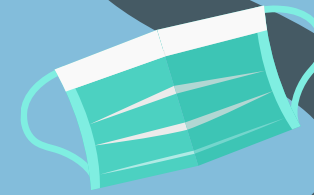


Class will end 5 minutes early for cleaning and dismissal.

Student will exit the studio door. Parent will be out of car and at door for pick up.



# TEACHER PATH



Teacher greets dancers at studio door entrance for attendance. Confirms masks are on and belongings are in bag.

Teacher manages a no-touch classroom with students 6 feet apart.



We may be separated but we are thrilled to be dancing together again!



Teacher monitors how students are doing with masks. Outdoor mask breaks are permitted. Students remain 6 feet apart.



Hand-Sanitizer may be used during class after water breaks or touching floor/barres.



Teacher walks students out to be picked up by parents waiting. Studio is then wiped down before next group is let in.

