



A National Juried Exhibition  
Produced by Gail Morrison and Betsy Kellas

# Exhibition Catalog

Designed by Penelope Anstruther  
for the



Marin Society of Artists  
January 10–February 2, 2019

# NASRIN AFROUZ

Seattle, WA



## ***Waterfall***

Mixed Media on Canvas

30" x 30" x 1"

\$5000

2016

*Waterfall* is a piece from my series of paintings *Power of Nature*.

Water, covering about seventy percent of Earth's surface, is composed largely of hydrogen, oxygen, sodium, chlorine and magnesium. There are also small or trace quantities of other elements on Earth's surface, including calcium, nickel, aluminum and gold.

# PENELOPE ANSTRUTHER

Oakland, CA

[Penelopeanstruther.com](http://Penelopeanstruther.com)



## ***Mark Mapping III***

Trace Monotype on Paper with Collage

20" x 15"

\$400

2017

*Mark Mapping III* is a piece from a series of trace monotypes on paper made using milkpaint and my own rust ink solution. Rust is created from the reaction of two main elements, iron (Fe 26) and oxygen (O8), resulting in a ferric oxide (usually written  $\text{Fe}_2\text{O}_3$ ). It is a reaction that I am obsessed with and encourage the formation of in my studio. The marks are created by tracing the found objects used to create the rust ink.

# STEPHEN BABCOCK

Ventura, CA

53works.com



## *Revealing Venus*

Acrylic & Iron Oxide Transfer on Copper Leafed Birch Ply

12" x 12" x 1"

\$450

2018

Copper was associated with the goddess Aphrodite/Venus in mythology and alchemy, owing to its lustrous beauty. The elemental alchemy symbol for copper is also the planetary symbol for Venus. It is associated with the matters of love & lust and symbolizes characteristics like charisma, feminine beauty, artistic creativity, affection, caring, and balance. This is my interoperation in art form.



# ALICE BARTHOLOMEW

Fairfax, CA



## *Three Stages of Water*

Photography

14" x 10"

\$80

2015

Water was believed by the ancient Greeks to be one of four elements from which all matter was created. Today's periodic table of elements shows 115 (and counting) and we know that water contains two of them: hydrogen and oxygen. Water (H<sub>2</sub>O) exists in three states: liquid, solid and gas.

# KATHLEEN BECKERLEY

San Geronimo, CA

[Beckerleytravel.com/art](http://Beckerleytravel.com/art)



## *Hidden Elements*

Mixed Media

9" x 12" x 1"

\$250

2018

Hiding in the fall leaves many elements unseen. Look and you will find – carbon, nitrogen, oxygen, hydrogen, phosphorus and sulfur and more!

# HENRY BELL

San Carlos, CA



## *Bad Medicine Cabinet*

Neon, Steel, Enamel, Household Goods, Glass, Tint

26" x 16" x 16"

\$3000

2017

Neon is well known for its ability to illuminate in bright and colorful ways. Less discussed is its tendency to dominate whatever it illuminates, casting a light that obscures the reality or objectivity of what is perceived. The bad medicine cabinet capitalizes on this quality to serve as a mirror to fears of external perception, lighting the face in red and making its reflection grotesque and sordid. Inside the cabinet are tools of gendered preventability.

# JOHN BENET

San Rafael, CA



*Snow-Cap Diner, Route 66*

Photography

16" x 20"

\$750

2012

Several gaseous elements are used to produce different colors in "neon" lighting. Neon emits red, argon emits light blue, and krypton emits yellow.

# LILLIAN BLOUIN

Newport Beach, CA

Lillianannablouin.com



## *Silicon Si 14*

Oil on Panel

16" x 16"

\$1024

2016

Part of the *Million Little Pieces Series*, this painting depicts the incredibly useful element of Silicon. Silicon chip technology has revolutionized our way of life. Thanks to the innovation of the smart phone our society has become an interconnected web of communication, not unlike bees within a hive.

# LILLIAN BLOUIN

Newport Beach, CA

Lillianannablouin.com



## *Calcium Ca20*

Oil on Panel

18" x 18"

\$1296

2015

Part of the *Million Little Pieces Series*, this piece is a metaphorical interpretation of Calcium, an element found in both bones and milk.

# LILLIAN BLOUIN

Newport Beach, CA

Lillianannablouin.com



## *Uranium U92*

Oil on Panel

12"x 12"

\$864

2016

Part of the *Million Little Pieces Series*, this painting depicts the controversial element of Uranium. In the wake of Hiroshima and Nagasaki the world was forever faced with the possibility of total annihilation. Faced with this knowledge, hope for the future can be easily beaten down and tread underfoot. But hope does not die that easily. Sadako Sasaki, a survivor of Hiroshima, is remembered for folding 1,000 paper cranes before succumbing to illness caused by radiation. Today the paper crane has become a symbol of hope for all who wish for a peaceful world.

# JANET BOGARDUS

Novato, CA

Janetbogardus.net



## *Full Fathom 5 - #2*

Acrylic on Paper on Board

24" x 30"

\$800

2017

The title comes from a song in Shakespeare's play, *The Tempest*. It laments the main character's loss of her father, who is said to lie five fathoms beneath the sea, where his drowned body has turned into something "rich and strange." This series of paintings shows underwater scenes, in which remnants of buildings or ships can be seen obscurely, through the element of water, which performs alchemy on them, turning human constructs into something rich and strange.



# JIM BREMER

East Longmeadow, MA



## *Beverly Hills Birdhouse 1*

Bead Embroidery with Found Objects

9.5" x 4.5" x 1.5"

\$1000

2017

Made from repurposed brass, nickel, and copper objects including watch parts, buttons, pins and assorted beads in a hand-sewn collage.

# THERESA BRICKER

Los Gatos, CA

[Uncommonegress.com](http://Uncommonegress.com)



## *Take 'Em If You Need 'Em: Lithium*

Crocheted Yarn, Nails and Acrylic on Cradled Panel

10" x 10"

\$250

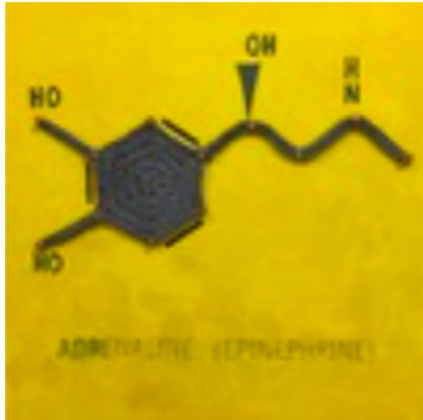
2018

Part of the *Balancing Act* series, highlighting how chemical prescriptions, behavioral therapies as well as art and crochet are methods to obtaining better mental and physical health. This piece focuses on the chemical element Lithium, used in the treatment of Bipolar disorder.

# THERESA BRICKER

Los Gatos, CA

Uncommonegress.com



## *Take 'Em If You Need 'Em: Adrenaline (Epinephrine)*

Crocheted Yarn, Nails and Acrylic on Cradled Panel

10" x 10"

\$250

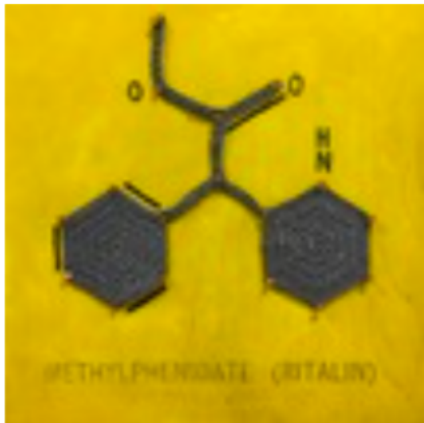
2018

Part of the *Balancing Act* series, highlighting how chemical prescriptions, behavioral therapies as well as art and crochet are methods to obtaining better mental and physical health. This piece focuses on the chemical compound Adrenaline (also known as Epinephrine), used in the treatment of ADHD.

# THERESA BRICKER

Los Gatos, CA

Uncommonegress.com



## *Take 'Em If You Need 'Em: Methylphenidate (Ritalin)*

Crocheted yarn, Nails and Acrylic on Cradled Panel

10" x 10"

\$250

2018

Part of the *Balancing Act* series, highlighting how chemical prescriptions, behavioural therapies as well as art and crochet are methods to obtaining better mental and physical health. This piece focuses on the chemical compound Methylphenidate (also known as Ritalin), used in the treatment of ADHD.

# JEREMY CALNAN

Sebastopol CA

Jeremycalnan.com



## *Ode to Pt*

Dry and Wet Pigments with Acrylic Mediums

24" x 36" x 1.5"

\$1400

2017

I often use metallic colors in my work and am never sure of what is going to happen before a pigment-laden brush is laid to canvas. This is what happened: an ode to Platinum (Pt78) on the Periodic Table of Elements! A precious metal used over time by artisans of many genres--artifacts from Ancient Egypt and the Inca--platinotypes by Stieglitz, Cunningham and Mapplethorpe--whose beautiful works remain intact defying the effects of time. A Noble Metal Reigns! Platinum!

# PATRICIA CROWLEY

Kentfield, CA



## *The Wave*

Oil on Canvas

13" x 21"

\$350

2018

The image involves water, which is hydrogen and oxygen.

# STEVE DELLICARPINI

Santa Clara, CA

Stevedelli.com



## *Core83-3*

Bronze, Elemental Bismuth

11" x 4" x 4"

\$1600

2018

2076CE: exploration of our solar system has expanded. We have shifted our colonization efforts away from Mars towards Earth's closest neighbor, Venus. Owing to the intense surface heat, the planet's crust contains an abundance of crystalline bismuth. Many of the core samples taken from the landing site of Magellan II on the northern continent of Ishtar Terra (see Core83-3), contain rich deposits. This bismuth will prove an invaluable resource in refueling our spacecraft for deeper manned exploration of the solar system.

# ANTHONY DIAZ

San Leandro, CA

Diazideas.com



## *Cobalt Chalcanthite*

Iron on Transfer, Wood Panel, Acrylic, Varnish

20" x 20" x 1.75"

\$550

2018

Chalcanthite – a water-soluble sulfate mineral found in copper deposit zones where late stages of oxidation occurred. It can dye materials blue when dissolved in water and has a sweet metallic taste, although consumption can cause dangerous copper poisoning.



# JOEANN EDMONDS-MATTHEW

Mill Valley. CA

Joeannsphotos.com



## *ARGON GAS 18*

Photography

19" x 25"

\$480

2017

This image is from inside a headlight of a vintage car from Malaga, Spain. I knew when I took this it would be used in an unexpected way. A very noble gas is how argon is described. Printed on metal.

# JOEANN EDMONDS-MATTHEW

Mill Valley. CA

Joeannsphotos.com



## *TITANIUM TILES BILBAO*

Photography

19" x 25"

\$520

2016

Tiles on the Guggenheim Museum in Bilbao, Spain are made of titanium (Ti22). Light weight, strong, reflective and weather resistant, perfect for the skin of this Frank Gehry designed museum. Printed on metal.

# GARY ELEINKO

Detroit, MI

Garyeleinko.com



## ***S16***

Sulfur, Collage, Epoxy, Oil on Wood

8" x 6" x 1.5"

\$300

2016

A painted construction with oil on wood, a chunk of sulfur, sixteen matchsticks with painted blue ends (recalling sulfur matches of old), an image of Io, the sulfuric moon of Jupiter, and image of the sulfur flats in Ethiopia.

# SUSAN ELSE

Santa Cruz, CA

Susanelse.com



## *Mercury: Cold Message*

Textile Sculpture with Wire, Spandex, and Mylar Surface

24" x 13" x 13"

\$1200

2013

The element mercury is paradoxical: it is a metal that is liquid at room temperature. For thousands of years, people saw mercury as a magical substance, when in fact it is poisonous. We got it wrong. Its use drove generations of hatters mad, and we all know about its toxic levels in fish. Mercury was also the messenger god of the Roman pantheon: the deity of mobility and transmutation, as well as communication, boundaries, and trickery.

# DANIEL GARDNER

Loveland, CO

Gardnerceramics.com



## *Jar*

Soda Fired Stoneware

11" x 10" x 10"

\$425

2018

The rich colors washing over *Jar* have a great deal to do with manganese. The clay from which *Jar* is formed contains small amounts of the element, and the painted decoration is a mixture of copper and manganese. Near its firing's peak temperature, I injected a sodium solution into the burner flames. Sodium volatilized in the flame and collected on the piece. The fired result is a wine-colored soda-manganese glaze, while the copper-manganese slip takes on a metallic bronze surface.

# DANIEL GARDNER

Loveland, CO

Gardnerceramics.com



## *Jar*

Soda Fired Stoneware

13" x 10.5" x 10.5"

\$425

2018

*Jar* displays various effects of sodium on ceramic materials. Near its firing's peak temperature, I injected a sodium solution into the burner flames. Sodium volatilized in the flame and collected on the piece, and melted into a glassy glaze. In some areas, this bleached the otherwise dark clay body. The painted elements on the piece were composed primarily of copper and cobalt. The soda glaze flowed through these marks, creating rivulets of cobalt blue from the otherwise dark bronze slip.

# RITA GARDNER

Richmond, CA

Ritamgardner.com



## *Contrails 2: Yes to NO*

Digital Photo

14" x 11"

\$295

2018

This image is of Blue Angels jets swooping downward towards San Francisco Bay. The title refers to nitrogen (N) and oxygen (O) – both of which are of course present.

# LE'EMA GRAHAM

San Rafael CA

[Paintingpriestess.com](http://Paintingpriestess.com)



## *Alchemical Dreamer*

Painting

24" x 16" x 0.625"

\$300

2018

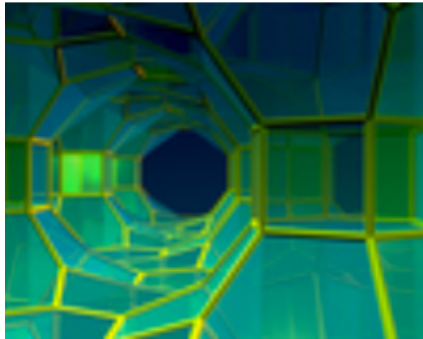
After my mother's death I needed to sleep a lot to transform the heavy lead of my grief. The alchemy of dreaming is a healing balm. I am inspired by Klimt's paintings of sleeping women and his use of gold. Pthalo, turquoise, and blue were layered over gold to create a dreamscape. Gold leaf drapes part the veil of time as the dreamer enters a portal of wonder in her nude surrender to sleep. The symbols in her coppery golden hair are alchemical dreams as she floats in a cosmic space beyond the veil.



# KELLY HARVEY

Aberdeen, WA

[Facebook.com/kjhinc/](https://www.facebook.com/kjhinc/)



## *Inside Out*

Digital Print

16" x 20" x 2"

\$180

2018

*Inside Out* is a view of a crystalline structure at the molecular level, showing bonds to silica only. This view is oriented from inside the open channel looking out.

# PETER HASSEN

Sonoma, CA

Peterhassen.com



## *Cloud Icon 14*

Mixed Media

24" x 24"

\$1800

2012

The background for this piece is made of a hexagon field (a "hive"), which holds both chemical elements from the periodic table (the building blocks of life) and a host of religious and "pagan" (non-abrahamic) icons. This charged field of science and religion is presided over by the classic formula for infinity with traditional gold corona halo. Gold corona's have been superimposed on natural/neutral skies for millennia, but here I'm highlighting a scientific symbol.

# WILLIAM HILL

Oakland, CA



## *Still Running Water (Double Strand)*

Transparent sealant

1.2' x 5" x 5"

2018

Just as the "single strand" piece in this series, *Double Strand* is an abstract representation of running water. Piece #2 represents how life may seem on target at times but miss its mark. Displayed is the aesthetic of running water but with a twist. Lights were added representing the idea of hope even in the midst of failure. Though water is not a single element in the periodic table water is made up of the elements hydrogen and oxygen, which are in the chart.

# WILLIAM HILL

Oakland, CA



## *Still Running Water (Single Strand)*

Transparent Sealant

1.5' x 8" x 6"

2017

Though water itself isn't in the Periodic Table it is made up of the elements hydrogen and oxygen, which together form water. This piece is the first of a 3-piece series and captures one of my favourite moments in time. The flow of running water is a mesmerizing occurrence. From flowing streams to running rivers to running faucets there is something about the continuous visual flow and sound of water. Water is connected to all aspects of life human and other.

# WILLIAM HILL

Oakland, CA



## *Still Running Water (Triple Strand)*

Transparent Sealant

2018

Continuing the idea of missing the mark *Triple Strand* also displays a unique and abstract idea of being on target but still missing the mark. The streams of water are flowing gracefully into each of the containers but since the containers aren't right side up the liquid entering them cannot be captured properly. Though water is not a single element in the periodic table it is made up of a covalent bond of hydrogen and oxygen, which are both elements.

# ANDREW IRVINE

San Jose, CA

Andrewirvineart.com



## *Frozen Fire*

Ceramic

19" x 13" x 1"

\$500

2016

This piece is a product of my expertise in chemistry applied toward my passion for ceramic art. With education and professional training in chemistry, my artistic journey is enhanced by having a deeper understanding of ceramic materials, glazes and the firing process on a technical and scientific level. Inspired by my background in chemistry, I'm constantly exploring the intersection between science and art. My work shows their complementary interdisciplinary nature. I am driven to create works that integrate science and the arts in a 21st century synthesis of creativity and innovation. My goal as a hybrid scientist-artist is to push the boundaries of ceramic art by exploring new materials and novel ways to use traditional materials in my ceramic glazes. I often use unique glaze colorants like uranium, neodymium, praseodymium, holmium erbium, silver, gold and bismuth. My processing involves an ion-exchange reaction using tin and iron chlorides sprayed on hot work.

# ANDREW IRVINE

San Jose, CA

Andrewirvineart.com



## *MirrorMirror*

Ceramic

19" x 13" x 1"

\$500

2016

This piece is an experiment with silver, copper, bismuth glaze. I used minimal amounts of iron chloride spraying and instead induced the metallic crystal nano-layers using alcohol reduction but spraying verse traditional atmospheric reduction. The results were more subtle iridescence with copper hue varying from green to yellow with a tinge of copper red. The iridescence is enhanced by the presence of bismuth and silver salts in the glaze, which also are reduced as inclusions in the metallic crystal nano-layers. The colors are a mix of refractive iridescence and the colorants themselves.

# JACOB JIMERSON

League City TX



## *The Wasteland*

Ceramics

6.5" x 8" x 5"

\$250

2018

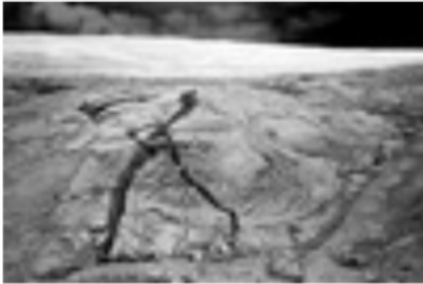
In *The Wasteland*, I manipulate iron and copper to create the green and red glazes cascading down the work. Additionally, iron created the gold hue of the flashing slip, and copper wire melted into the metallic patches on and around the piece. The abundant use of these elements references their abundance in our society. Electricity depends on copper wiring and iron is used in everything from railways to chic stainless steel appliances. By manipulating these elements, I show the mutability of a society rooted in them, and deconstruct ideas of beauty and technological powers which spring from them.



# RUSSELL JOHNSON

Sonoma CA

Russelljohnson.com



## *Lavaman*

Digital Archival Photograph

12" x 18"

\$320

2001

The earth throws off its elements dramatically in the form of lava, which is comprised of silicon, oxygen, aluminum, iron, magnesium, calcium, sodium, potassium, phosphorus and titanium. Photographed at Hawaii Volcanoes National Park.

# DIANE KELL

Santa Fe, NM

Kellgallery.com



## *What Is Water?*

Acrylic

36" x 36" x 1.5"

\$1200

2018

A representation of water in three states, as a solid (upper left), liquid (lower left) and vapor (upper and lower right). Ice floes, oceans, lakes, streams, clouds are all made of water. Water is essential to life on earth. It is not surprising, then, that early Greek philosophers identified water, along with earth, fire and air, as one of four elements that form all matter. We now know that water is not an element; each water molecule contains one oxygen and two hydrogen atoms, H<sub>2</sub>O. Water transforms from liquid to vapor and back again in a cycle of precipitation, evaporation/transpiration, and condensation. In the atmosphere water vapor condenses around tiny airborne particles to form clouds. Philosophers in ancient times pondered the makeup of clouds. I am simply enthralled by their beauty. I am always scanning the skies for unusual, or unusually beautiful, cloud formations. I paint them so others can enjoy them, too.

# BETSY KELLAS

Richmond, CA



## *The Elements of Surprise*

Mixed-Media Collage

6" x 6"

NFS

In the foreground an alchemist works with his *soror mystica* (female assistant) while two children in modern dress lurk cautiously in the background. As if behind a curtain, the children look out with guarded curiosity. Outside and above, the night sky illuminates the cave-like interior of the alchemical laboratory.

I chose this piece for the ELEMENTS exhibition as an homage to alchemy, the historical antecedent of modern chemistry.

# NINI LION

Mill Valley, CA

Ninilion.com



## *Aesturial II*

Pastel, Inks, and Metallics

30" x 24"

\$2000

2016

*Aesturial II* is an abstract, mixed-media painting that incorporates the element gold (Au79), the element silver (Ag47), and the element aluminium (Al13). The gold, silver, and aluminium draw the viewer to other planes and images, offering alternate focal points as the light shifts during the day or night, heightening the combination of pure color, form, line, shape, and texture in an abstract, based on life drawing.

# CURT LUND

St Paul, MN



## *Copper*

Artist's Book

6" x 14" x 4"

\$975

2013

My work combines photography, bookmaking, and collected everyday objects to create a non-traditional portrait of my mother.

Copper is an essential mineral for the human body and a key component in our internal chemistry. It is also the subject of much superstition, used as a tool in many alternative or new-age practices. In early 2013, my mother was diagnosed with cancer. In seeking to learn more about the disease, I was surprised to find much controversy over copper – an element which some believe promotes healing and may benefit certain cancer treatments, while others believe it may actually contribute to the advent of cancer and other degenerative diseases.

*Copper* spans a specific span of time, a reflection on the finite measure of a lifespan. The photo flipbook, featuring my photographs of each penny at "life-size" as well as in extreme detail, allows the reader to time-travel and measure this lifespan at whatever pace they choose. The book culminates with three blank pages that represent the three-year prognosis – the predicted end to an ultimately unfinished collection, but

also space for coins yet to be minted, years yet to be lived. The work includes a collection of pennies spanning my mother's lifetime through the production of the book in 2013 (she passed away in 2016); a natural sample of copper under a copper-leafed shadowbox; and a digitally printed, perfect-bound photo flipbook with life-size and extreme-close-up views of each penny. By flipping through the flipbook the viewer can travel through time forward or backward. The extreme close-up photographs of each penny provides an interesting opportunity to observe the fine details – as well as the evidence of wear and tear, nicks, imperfections, oxidation, and other signs of age – present on an everyday object that we typically disregard or notice only in passing.

# OOLA MAR

Nicasio, CA

Oolamar.com



## *Pine Cone with Snow Melt*

Pinecone, Borax (Boron), Wire and Pipe Cleaners

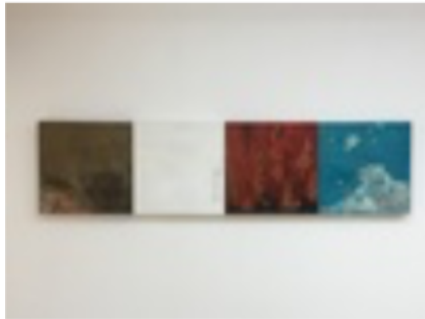
4.25" x 12.5" x 5.00"

\$100

I found this beautiful pinecone in Lake Tahoe area during the spring thaw. Working with a Borax (boron) crystal process inspired this piece.

# KATHLEEN MCLEAN

Berkeley, CA



## *Iron, Oxygen, Carbon, Sodium (Earth, Air, Fire, Water)*

Photos, Ink, Acrylic, Earth, Salt, Ash, Misc. on Canvas

12" x 48" x 1.5"

\$1000

2018

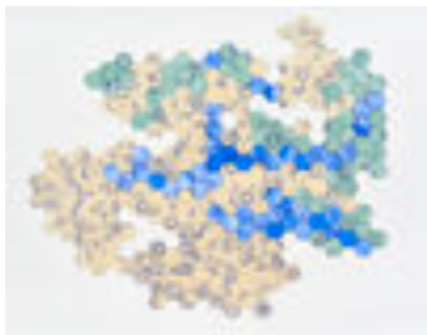
In today's digital, relativist, anti-science era, matter still "matters." Starting with ancient notions of the composition of the world—earth, air, fire, and water—I explore the different ways of capturing and manifesting these elements of composition. I combined photos of earth with dirt, clay, rust, and copper fibres, along with a small shovel head as an "earth container." For air, I whipped acrylic paint into small air-filled bubbles and combined them with photos and a test tube. Ash mixed with acrylic, fire photos, and a small light bulb explore the notion of this carbon producing phenomenon. And photos of the sea are tiled together with salt-laden acrylic to represent water. None of these are elements in their pure form, but they are tangible, visual, symbolic representations of the stuff of the universe.



# CHRISTINE MEURIS

Berkeley, CA

Christinemeuris.com



## *Kekulé's Dream*

Rice Paper, Acrylic Ink, Ball Point Pen, Mull and Thread

24" x 33"

\$600

2018

August Kekulé, a 19th Century German chemist is said to have had a dream. At the time Kekulé was trying visually represent the benzene molecule. In the dream, atoms "gambled before [his] eyes" and began swirling around to form a ring. Upon awakening, Kekulé knew that the key to representing the molecule was to link the six carbon atoms in a hexagon with an atom at each joint. I did not know this myth when I made this piece. I was between projects and trying to generate ideas by playing with materials: rice paper, a Spirograph and the wandering designs possible with hexagons. When this call came out, I realized that I had created a piece using two symbols closely associated with chemistry and the periodic table: the hexagon and the hypotrochoid – or Spirograph – which has been used to represent electron orbits around a nucleus. Therefore this piece, as it turns out, is about the entire periodic table and all of its gamboling atoms.

# JEFFERY MILLER

Parker, CO



## *Rust Never Sleeps*

Dover, Fe Oxide, Rust Red; Cone 6

8" x 5" x 5"

\$522

2018

The piece is a scientific impression of the timeless dance of oxygen with her partner iron. The clay form represents oxygen with her two electron shells topped by a nuclear head. She is off-balance due to a lack of two electrons in the outer shell. To complete herself, she finds partners to seduce who have two electrons to share. Her favorite partner is iron, a willing partner, who freely shares two electrons in a never-ending dance of oxidation. While iron ages and rusts with time, oxygen's attraction is so strong that the dance never ends...rust never sleeps. The oxygen clay form and iron glaze chemistry were chosen due to the importance of these two elements in the artist's academic life. For the artist and creative mind, oxidation-related changes in the valence states of iron atoms alters their visible light absorption to change color perception by the human retina/brain...red, green, rust, metallic, etc.

# SYLVIA MORI

El Cerrito, CA



## *Copper*

Glass Mosaic

26,5" x 20"

\$1000

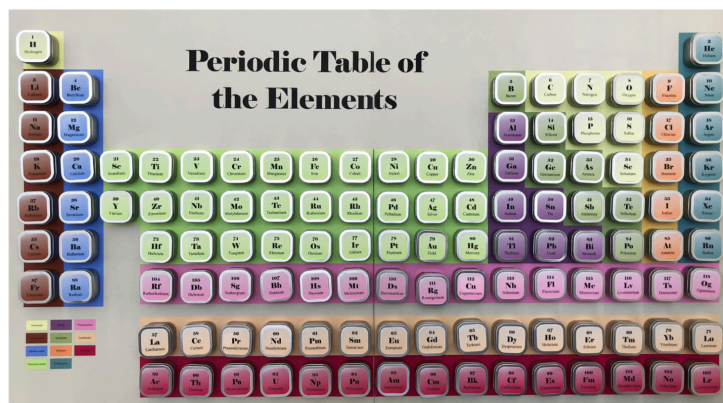
2018

This glass mosaic is a poster showing the flags of the ten top producer countries of copper (Cu<sub>29</sub>). Among them, Chile (5.33 million megatons) is in the first place followed by Peru (2.39 million megatons) and China (1.86 million megatons).

# GAIL MORRISON

Richmond, CA

Gail@gailmorrison.com



## *Periodic Table of the Elements*

Steel, Paper & Miscellaneous Materials

47"x72"

\$15,000

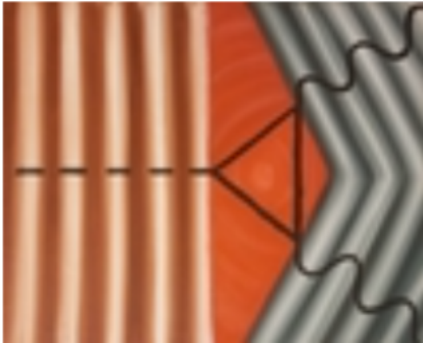
2018-2019

In this collaborative, 3Dm interactive Periodic Table of the Elements, each element has a box and a volunteer to put something in the box, an expression of personal relationship to the element. To date, approximately two-thirds of the elements have been spoken for. Contents include samples of the element or its ore, photos, poems, scientific information and stories, the meaning of the name, the meaning of the element in the person's life, mysterious little sculptures, tenuous threads leading to myth, poetry and song. If you would like more information, please contact the artist at [gail@gailmorrison.com](mailto:gail@gailmorrison.com).

# JOSHUA MURILLO

Napa, CA

Facebook.com/joshuarianmurillo/



## *Higgs Decay*

Oil on Canvas

20" x 16"

\$480

2017

Feynman Diagrams are used by Particle Physicists to visualize and calculate properties of sub-atomic particle interactions. The diagrams are simply constructed with black lines, and time flows from the bottom of the image to the top. This painting is part of a series called *pARTicales & waves* that builds off these diagrams to present nature's fundamental interactions, and the dual Wave-Particle quality of the sub-atomic particles that constitute the Elements.

*Higgs Decay* depicts the Di-Photon decay channel of the Higgs Boson (sensationally called the "God Particle"). The Higgs Boson (dotted line) decays into a Top Quark loop, which produces two Photons (wavy lines). The detection of the Higgs Boson was announced in 2012 by CERN, this two-photon decay channel was the path that was used by both Atlas and CMS detectors at the Large Hadron Collider (LHC) to find the Higgs Boson.

# LORRAINE PRINZING

Greenbrae, CA



## *Nebula*

Watercolor on Canvas

20" x 26"

\$600

2018

Nebula, a giant cloud of dust and gas in space: mostly hydrogen (H1), and helium (He2).

Royal Society of Chemistry [www.rsc.org](http://www.rsc.org)

[www.spaceplace.nasa.gov](http://www.spaceplace.nasa.gov)

# MELODY RANSOL

Loveland, CO

Melodyquilts.com



## *Call of the Elements*

Mixed Media

18" x 14"

\$200

2018

Greek philosophers believed all things were made of four elements: earth, air, fire or water. Democritus envisioned the atom more than two millennia before scientific evidence reinstated his idea. Humans have long sought to identify the most basic units of our physical world. At least 23 elements were known by 1800; the discovery of radioactivity a century later confirmed there was something smaller than an atom. The call of the elements carries over time and across cultures.

# MELODY RANSOL

Loveland, CO

Melodyquilts.com



## *Marie Curie*

Mixed Media

18" x 14"

\$200

2018

Marie Curie, the first person awarded the Nobel Prize twice, discovered two elements and coined the term "radioactivity." She and husband Pierre elected not to patent their radium isolation process to ensure its availability to the science community. Living modestly, Marie overcame numerous obstacles impeding women in her era, generously donated her time and money, and remained an outspoken advocate for the sciences. Marie Curie is arguably the most prominent woman in the history of science.



# STEVEN RASMUSSEN

Salt Lake City UT



## *Copper Tetraptych*

Photography

12" x 40"

\$1000

2018

This suite of four photographs shows the many colors, textures and patinas of copper as it ages. The presence and beauty of quality materials doesn't diminish with age: in fact, some might argue that, like copper, life gets better with age.

# DONNA ROPP ROBINSON

Los Angeles, CA

Donnaropp-robinson.com



## *Basalt & Barium. Blocks & Bowls.*

Ceramic – Stoneware, Porcelain, Melted Glass

1" x 4" x 4"

\$250

2018

Collection of small sculptural elements, arranged & displayed to reference anthropological & archaeological findings. I approach the surface design with the application of glaze by "drawing" or "dipping" to create a contrast with the raw clay. Elements – barium carbonate, copper carbonate, zinc, silica and more are weighed, mixed & melted to create these glazes.

# MEG REILLY

San Rafael, CA

Megreillyart.com



## *My Father Preferred Burnt Toast*

Carbonized Mixed Media

12" x 13" x 11"

\$200

2018

Dietary Carbon – A Theory

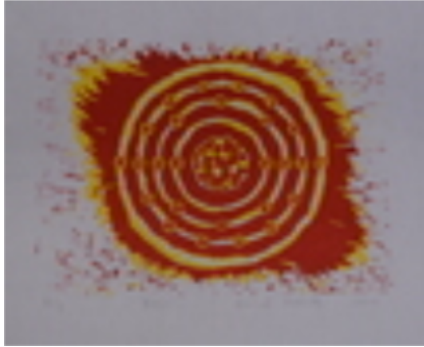
My father ate burnt toast. Dad explained his theory of burnt toast – while eating the theory. It goes like this:

The body is 18% carbon, & all we eat converts in part to carbon. Dad's favorite food was grain-based complex carbs in the form of BREAD.

The body breaks down complex carbs to glucose (carbon, hydrogen & oxygen), but slowly. Dad decided to augment the process by burning his favorite food. "Burnt toast is an elegant delivery system for carbon!" he exclaimed – nearly every time he ate it.

# RACHEL ROBERTS

Sharon, TN



## *Iron*

Two Block Woodcut

10" x 12"

\$75

2018

This work is a presentation of the twenty-sixth element's atomic structure. Atoms themselves are almost like mini-universes within our greater cosmos. Although iron is not red in its purest form, the color was chosen because of the artist's experience of taking ferrous sulfate, a compound that is prescribed to treat patient's with a blood iron deficiency.

# ILEANA SOTO

San Leandro, CA

ileanasoto.com



## *Livermorium*

Fiber Art

38.5" x 47"

\$2550

2017

Although its appearance was fleeting, element Lv116, livermorium, was confirmed in 2009, and 2012. The joint cooperation between America (Lawrence Livermore National Laboratory) and Russia (Joint Institute for Nuclear Research, Dubna) reminds us that discovery is global and interdependent, and positively benefits humankind. (Quilted by Angie Woolman).

# TANZANIGHT

Miami, FL

Tanzanightvisualartist.com



## ***Mars, Bloodstone, Petrified Conifers***

Acrylic, Watercolor, and Sumi Ink on Rives BFK

33" x 42.5"

\$1500

2018

This work on paper references the planet Mars (the color of the planet is imparted from its surface of oxidized iron [Fe] dust), the mineral jasper (silicon dioxide,  $\text{SiO}_2$ ), and petrified conifers (also composed mainly of silicon dioxide,  $\text{SiO}_2$ ). It alludes to the phenomenon of petrological activity, plant remains, fossils, and the formation of plants into carbon reserves over time. I used botanical specimens for part of the acrylic paint application method, relating to fossilized impressions, but also a direct use of carbon (C) and water ( $\text{H}_2\text{O}$ ) in creating the work.

# GEORGE TOMBERLIN

Pt. Richmond, CA



## *Plumbum Ouroboros*

Mixed Media

10" x 8" x 1"

2018

This piece juxtaposes a piece of lead (Pb82), *Plumbum* in Latin), unearthed in an abandoned basement, with an ancient image of the Ouroboros, from the *Chrysopoeia of Cleopatra the Alchemist* dating to third century in Alexandria. Together they evoke the cyclical alchemical processes used to transmute a "base" metal like lead into a "noble" metal like gold. For me, the piece symbolizes the eternal unity and cyclical renewal of all things, as summarized in the Greek inscription in the center of the Ouroboros: "The All is One".

If it seems like a stretch to link alchemy and modern chemistry, one might consider the words of Theodore Gray from his book, *The Elements: A Visual Exploration of Every Known Atom in the Universe*:  
"The alchemists weren't wrong in trying to transmute base elements into gold, they just didn't have the right technology -- a nuclear reactor -- to pull it off."

# ADAM THACHER

Bakersfield, CA

[Sanjoaquinpunchedtin.com](http://Sanjoaquinpunchedtin.com)



## *Federal Classic*

Tin, Mirror, Solder

15" x 12.25" x 1"

\$150

2018

The frame of this piece is made from tin. Tin (Sn50 ) is a pure element. It is a stable metal – so much so that it can be used to hold and cook food. In Spanish Colonial and folk art traditions of the 1800s, tinsmiths repurposed actual tin cans. Now, tin-coated, milled steel sheets are available to artists. To make the pieces, large sheets of blank tin are cut and folded into shape by hand. Hammers and custom punches are then used to create the unique designs in the tin, and all the pieces are soldered together. This piece is hand antiqued to oxidize the tin slightly because new tin sheets are shiny, bright, and silver colored.



# DEBORAH WEIR

Rolling Hills Estates, CA

DeborahWeir.net



## *After Schwitters*

Mixed Media Collage

19" x 19" x 1"

\$1500

2017

*After Schwitters* is a mixed media collage with windows cut through. It utilizes an array of metals in golds, silvers, coppers and bronzes along with papers and snippets of fabrics and even a tea bag. The windows have metal bars, which provide shadows on the wall behind.

# EMIL YANOS

San Francisco, CA

Emilyanosdesign.com



## *Planter*

Ceramic

6.5" x 8" x 8"

\$200

2017

The black markings on the piece *Planter* are random gifts of the kiln. The glaze used is called Shino. The color traditionally ranges from white to orange. The high amount of soda ash in the glaze reacts to the environment creating crystals on the piece. These crystals control the carbon trapping capabilities of the glaze. The result is called "Carbon Trap Shino".

# EMIL YANOS

San Francisco, CA

[Emilyanosdesign.com](http://Emilyanosdesign.com)



## *Botticelli Rebirth*

Ceramic

7" x 13.5" x 14"

\$895

2014

*Botticelli Rebirth* takes the form of an octopus. Like the element iridium, the octopus changes its color either to blend into its environment or to stand out in its environment.

# DAVE YOAS

El Sobrante, CA



## *Madame X*

Upcycled Metal, Tin Collage

23.5" x 11" x 1.75"

\$1200

2018

Tin (Sn50) – tin cans, tin toys, tin whistles, tin plates. These are resources that I use to make my metal collages, which is unfortunate, as tin cans are actually made from steel. Tin bonds readily to iron and is used for coating steel to prevent corrosion. Tin-plated steel containers are widely used for food preservation, and thus, many of my art supplies. I call myself a Tin Artist, but in truth, I use steel that is tin-coated. Does that make me a Tin-Coated Artist?

# GREGORY VERNISKY

San Francisco, CA



## *Chasing a Dream in Wood and Lead*

Wood, Lead, Steel, Paint

35" x 25" x 16"

\$400

2017

Lead is heavy, substantial, useful, and deadly – ballast in a ship, bullet in a rifle, paint – dense, opaque and poisonous. What can be further from hopes and dreams? But in this sculpture, a chunk of lead not only prevents a man from reaching his dreams, but also presents a moment of daring thrust and hope. Lead – a gray, unromantic, and otherwise maligned element you can't live without.