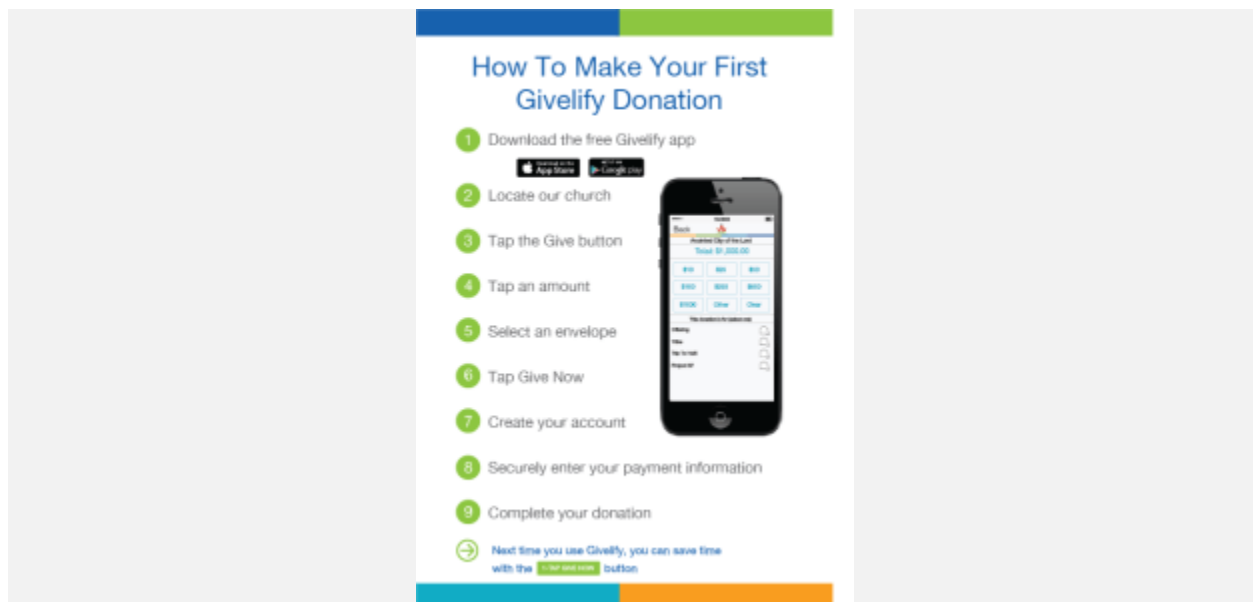


# Making Your First Givelify Donation

First, download the free Givelify mobile donation app from the [App Store](#) or [Google Play](#).

Then open the app and follow these step-by-step instructions to make your very first Givelify mobile donation:

## Finding Your Church or Nonprofit



*Download Printable Version (PDF)*

To locate the church or nonprofit you wish to donate to, you have two options:

- If you are within a 2-mile radius, you can use the **Nearby** tab and find the organization on the [GPS map](#). We are **Mt Calvary Baptist Church, 17 Fairburn Road, Atlanta, Ga**
  - *Note: To use the **Nearby** feature, your device must have location services turned on. Also, make sure that the Givelify app has permission to access your location.*
- To search for the organization:
  1. Tap the **Search** tab at the top of your screen.
  2. Select whether the organization is a church or nonprofit.
  3. Enter the organization's name, city, and state into the spaces provided.
  4. **Mt Calvary Baptist Church, Atlanta, GA**

5. Tap **Search**.
6. Find the organization in the list of results and tap **Give To**.

## Making Your First Donation

Once you find your church or nonprofit's app profile, tap the green **Give** button. Then follow these steps:

1. Select the amount you would like to donate, or tap **Other** to enter a different amount.
2. Select a donation envelope.
3. Tap **Give Now**.

## Create Your Giving Account

To complete your first donation, you will need to create an account. Follow these steps:

1. On the popup, tap Sign Up.
2. Choose **Sign-in with Facebook** or **Sign Me Up by E-Mail**.

Signing up by e-mail:

1. Enter your name, e-mail address, and password into the spaces provided.
2. Tap the green **Sign Me Up** button.
3. An e-mail will be sent to the address you provided with an activation link. To activate your account, click the link in the e-mail.
  1. *Note: You **can** complete your first donation before clicking the activation link.*
4. In the app, tap **Continue**.

## Completing Your First Donation

Now that you have created an account, you will be able to complete your donation. Follow these steps:

1. Tap the green **Give Now** button.
2. When prompted with a reminder about your activation e-mail, tap **Cancel**.
3. Securely enter your payment information in the spaces provided.
4. Complete your donation.

## Future Donations Will Be a Breeze

Now that you have completed your first church or nonprofit donation using Givelify, future giving will be a piece of cake. You will be able to give in just three taps, with no prompts to create an account or enter payment information.

To make the process even more simple, save the organizations you give to the most as **Favorites** or your **Home Church** using the star and heart icons on their profile.