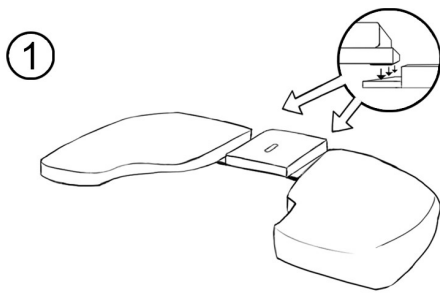
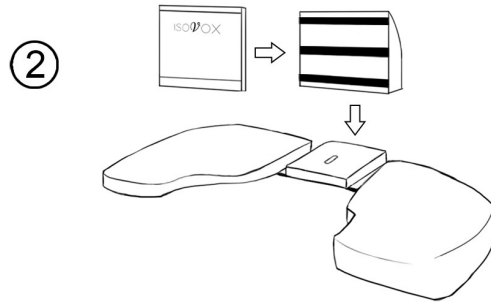


INSTRUCTIONS

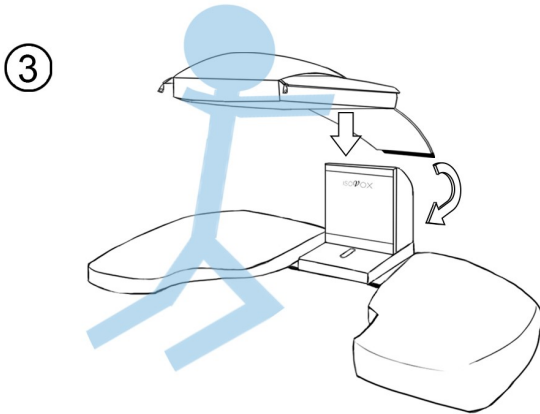
See the ISOVOX 2 Setup Video before first time assembly:
www.isovoxbooth.com/setup



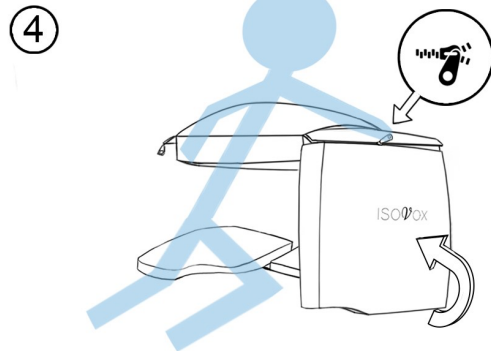
1 Attach the Velcro Stripes to the Velcro-Sides on the base-plate.



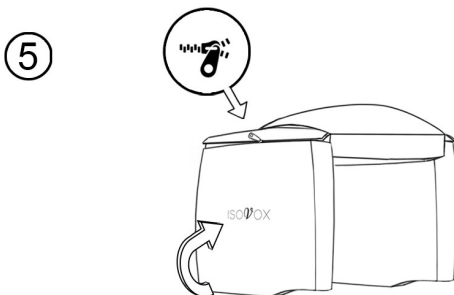
2 Attach the front to the Sound Reducer and place in line with the base-plate.



3 Carefully place & hold the roof and let it rest on top of the sound reducer.



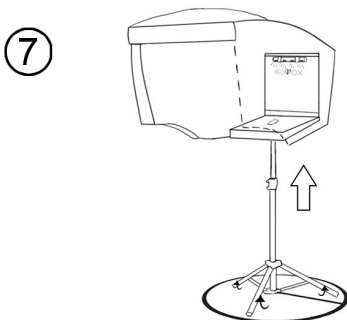
4 Flip the side up and zip it together with the roof.



5 Repeat step 4 on this side.

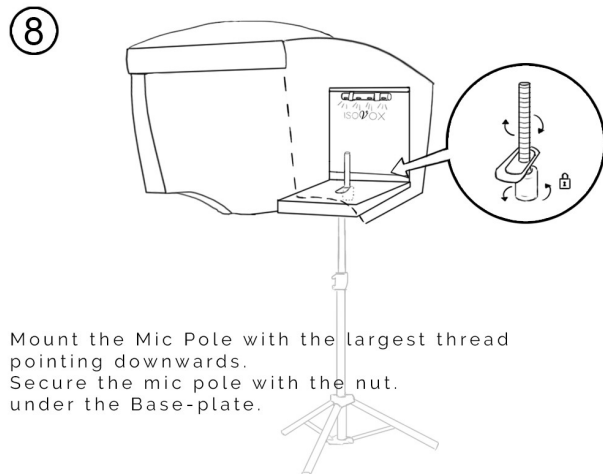


6 Also, attach the velcro side of the back flap on to the velcro stripe under the baseplate.



7 Lift the ISOVOX 2 and mount it on a PA-Speaker stand.
The Stand must meet a 50 kg Centric Load minimum for safe use.
 Use safety hatch to lock the position.

Extend to widest position for Your safety.



8 Mount the Mic Pole with the largest thread pointing downwards.
 Secure the mic pole with the nut under the Base-plate.

!
CAUTION

See back-page for important information about your ISOVOX 2.