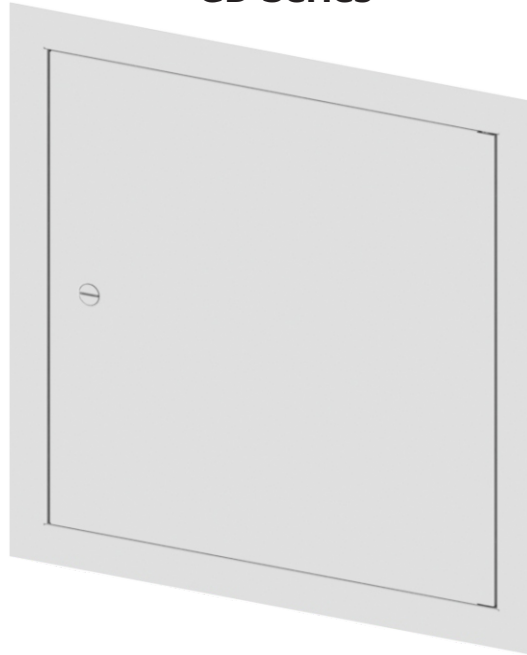


**GD Series**



**Gasketed Access Doors**

**Gasketed Access Doors** are ideally suited for new installations or for remodeling, in masonry, tile, wood or other wall and ceiling surfaces. Access door is fully gasketed and is commonly used in clean rooms, laboratories, operating rooms , etc.

**Door and Frame** are fabricated from 18 gage, galvanized steel with a white prime coat finish.

**Frame** is four piece construction, 1" wide and provides perfect concealment of the rough wall opening. Wall frame is provided with 1/4" mounting holes for fastening within the furred spaces allowing faster installation and fixing maximum clearance.

**Concealed Pivoting Rod Hinge** prevents distortion and closes door squarely.

**Latch** is screwdriver operated.

**Finish** is a white prime coat.

**Guide Specification**

Provide Elmdor<sup>®</sup> GD Series, Gasketed Access Doors. Access door and frame shall be fabricated from 18 gage, galvanized steel with a white prime coat finish. The door shall have rounded safety corners and a concealed pivoting rod hinge. Frame shall be one piece construction with no mitres or welds on the face. Latch shall be screwdriver operated.



**MODEL NUMBER AND OPTIONS SELECTION**

**BASE MODEL NUMBER**

- GD Gasketed Access Door  
(18 Gage Steel)

**Suffix Options**

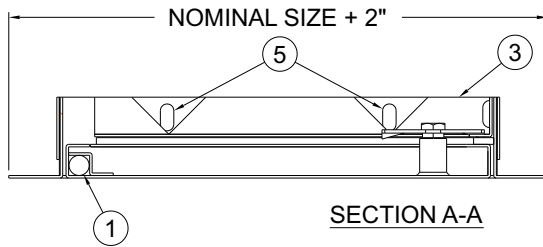
- AKL Allen Key Latch
- CL Cylinder Lock (one per door)
- SS Stainless Steel Construction  
(Type 304 No. 4 Satin Finish)

**STANDARD AVAILABLE SIZES**

Special sizes available upon request.

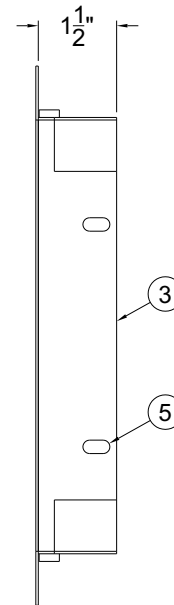
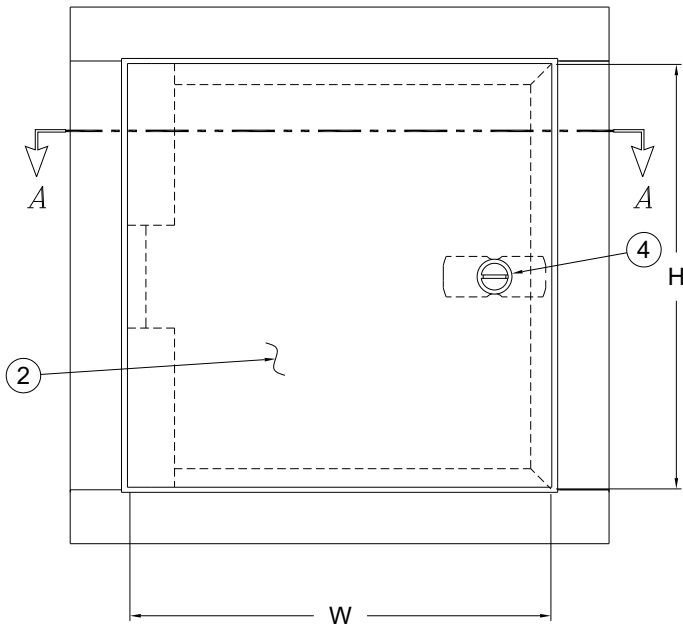
**NOMINAL DOOR SIZE (W X H)**

INCHES	WALL OPENING	LATCHES	LBS.
GD 8" x 8"	8-1/2" x 8-1/2"	1	3.5
GD 12" x 12"	12-1/2" x 12-1/2"	1	6
GD 16" x 16"	16-1/2" x 16-1/2"	2	9
GD 18" x 18"	18-1/2" x 18-1/2"	2	10.5
GD 24" x 24"	24-1/2" x 24-1/2"	2	16
GD 24" x 36"	24-1/2" x 36-1/2"	2	22



**NOTES:**

1. CONCEALED PIVOTING ROD HINGE
2. DOOR
3. FRAME
4. SCREWDRIVER OPERATED LATCH
5. MOUNTING HOLES



Dimensions are subject to manufacturer's tolerance of plus or minus 1/4". Elmdor/Stoneman assumes no responsibility for use of void or suspended data. Please visit [www.elmdorstoneman.com](http://www.elmdorstoneman.com) for most current specifications. © Copyright 2009 Elmdor/Stoneman, City of Industry, CA, A Division of Acorn Engineering Company.

**SELECTION SUMMARY & APPROVAL FOR MANUFACTURING**

Model Number & Options _____	Quantity _____
Company _____	Date _____
Contact _____	Title _____
Approval for Manufacturing/Signature _____	

**GD**

Rev: 04/15/16