



TUESDAY RACING SERIES

May 7, 2019 – September 17, 2019

SEASON OPENER

May 4, 2019

MEMORIAL CUP

July 20, 2019

ASTORIA REGATTA

August 10 & 11, 2019

CLOSING DAY RACE

September, 22, 2019

Astoria Yacht Club
Astoria, Oregon, USA

NOTICE OF RACE

The notation '[DP]' in a rule in the Notice of Race means that the penalty for a breach of that rule may, at the discretion of the protest committee, be less than disqualification.

1. RULES

1.1 Races will be governed by the rules as defined in *The Racing Rules of Sailing*.

1.2 The following prescriptions of *US Sailing* will not apply: Rule 63.2 and Rule 63.4.

1.3 Racing Rule 40 will be changed as follows: Replace the entire Rule with, "Competitors shall wear personal flotation devices, except briefly while changing or adjusting clothing or personal equipment. This rule applies at all times while afloat. Wet suits and dry suits are not personal flotation devices. Flag Y need not be displayed." [DP]

1.4 Boats shall have and monitor a working VHF marine radio capable of transmitting and receiving on channels 13, 16, and 68 at all times while afloat. [DP]

2. ELIGIBILITY AND ENTRY

2.1 All races are open to all boats of a one-design, level or PHRF class. At least three boats are required to constitute a one-design class or level fleet class, and they must so advise the race committee of their intent prior to the end of the competitor meeting for the applicable regatta or series. PHRF handicap ratings will be assigned by the organizing authority to all registered boats using US Sailing data as a base rating guideline. Boats being entered in any non-stock configuration that would alter their base rating may be required to provide evidence of their non-stock configuration prior to racing if they do not want to accept the base rating assigned for that boat.

2.2 Eligible boats shall enter by completing the Astoria Yacht Club Registration Form (Attachment A) and pay the applicable fee prior to competing. The entry form and race entry fee must be received by the race committee prior to the end of the competitor meeting for the applicable regatta.

2.3 Each boat shall provide the race committee with emergency contact information for each person aboard. A completed Race Crew Manifest Form (Attachment B) shall be provided to the race committee each day prior to the signal boat leaving its moorage. [DP]



3. FEES

3.1 Entry fees are as follows:

Event	AYC Members	Non-Members
Tuesday Racing Series*	\$125	\$175
Tuesday Racing Single Race	\$15	\$20
Season Opener	\$10*	\$10*
Memorial Cup	\$30	\$40
Astoria Regatta	\$50	\$60
Closing Day Race	\$30*	\$40*

* No fee for Season Opener and Closing Day Race when paying for the entire Series

3.2 An Astoria Yacht Club member that has paid the entry fee for the entire season, and whose boat participates in 16 or more Tuesday Racing Series races, shall receive the following credit towards the season fee for the 2020 season: 16 races - \$20; 17 races - \$21; 18 races - \$22; 19 races - \$23; 20 races - \$25. Any nonmember who participates in more than 5 Tuesday Racing Series races shall receive one \$20 credit towards any Tuesday Racing Series or weekend regatta fee for the 2020 season.

3.3 Entry fees do not include berthing or post-racing refreshments.

4. SCHEDULE

4.1 Date and time of registration, dates of racing, and the scheduled time of the warning signal for the first race each day are in Attachment C.

4.2 Competitor meetings for the Tuesday Racing Series will be held on the first Tuesday of each month, and prior to each pursuit race, at 1730 at the Astoria Yacht Club, or as otherwise specified by the race committee on the Astoria Yacht Club web site (<https://www.astoriayachtclub.com/>).

4.3 Competitor meetings for each weekend regatta will be held prior to racing on the first day of the regatta at the time and place specified by the race committee on the Astoria Yacht Club web site.

4.4 Additional competitor meetings may be called at such times and places specified by the race committee on the Astoria Yacht Club web site.

4.5 The person in charge for each boat shall attend a competitor meeting prior to the boat's first race in the Tuesday Racing Series and for each weekend regatta. [DP]

5. MEASUREMENT

5.1 A boat shall comply with RRS 78.1 at registration and thereafter. [DP]

5.2 Inspection and measurement checks may be performed by the technical committee on any boat at any time prior to or following racing with respect to compliance with rating or safety rules.

6. SAILING INSTRUCTIONS

Sailing Instructions will be available after 1830 on Tuesday, April 16, 2019 at the Astoria Yacht Club race office and the Astoria Yacht Club website.

7. VENUE

Attachments D & E show the location of the racing areas on the Columbia River in the vicinity of Astoria, Oregon.

8. PENALTY SYSTEM

The following prescription of *US Sailing* will apply: Appendix V1.

9. SCORING

9.1 One (1) race is required to be completed to constitute a series.



- 9.2** To be included in the final series standings for the Tuesday Racing Series, a boat must be registered for the entire series and must complete one more than one half of all Tuesday Racing Series races held during the series. A boat's series score will be the total of her race scores excluding enough of her worst scores to just satisfy the completion requirement of the previous sentence for the final series standing.
- 9.3** With respect to any series other than the Tuesday Racing Series, scores will be computed as follows:
- 9.3.1** When fewer than 5 races have been completed, a boat's series score will be the total of her race scores (no excluded scores).
- 9.3.2** When from 5 to 9 races have been completed, a boat's series score will be the total of her race scores excluding her worst score (one excluded score).
- 9.3.3** When 10 or more races have been completed, a boat's series score will be the total of her race scores excluding her two worst scores (two excluded scores).
- 9.4** Tuesday Racing Series races conducted as pursuit races will be part of the Tuesday Racing Series, and will also be scored separately as their own series.
- 9.5** A boat that is raced short or single handed, or without flying sails, may have its PHRF rating adjusted for an individual race or the entire Tuesday Racing Series, or for an entire weekend regatta. The boat shall notify the race committee in writing of a request for rating adjustment at the competitor meeting prior to the affected race or races. For a Tuesday series race for which there is no scheduled competitor meeting, the skipper shall notify the race signal boat crew in writing prior to the race signal boat leaving the dock, or if there will be no race signal boat for that race, the race committee must be notified by email no later than one hour prior to the scheduled starting time at aycracecommittee97103@gmail.com. [DP] The adjustment for all boats will be as follows:
- Short-handed crew - PHRF rating plus 6 seconds
(For boats less than 32' LOA, two crew members; for boats 32' LOA or greater, three crew members)
 - Single handed crew - PHRF rating plus 12 seconds
 - No flying sails - PHRF rating plus 18 seconds

10. PRIZES

Prizes may be given at the discretion of Astoria Yacht Club.

11. DISCLAIMER OF LIABILITY

13.1 Competitors participate at their own risk. See Racing Rule 4 Decision to Race. The organizing authority will not accept any liability for material damage or personal injury or death sustained in conjunction with or prior to, during, or after racing. Competitors accept full responsibility for their actions during any activity related to organizing authority, including on-shore activities before, during, and after racing.

13.2 Competitors are expected to abide by Port of Astoria rules with respect to Port facilities. [DP]

12. INSURANCE

12.1 Each participating boat shall be insured with valid third-party liability insurance with a minimum cover of \$300,000 per incident or the equivalent.

12.2 Boat shall be prepared to supply proof of insurance upon request.

13. FURTHER INFORMATION

The Port of Astoria maintains ramp launching facilities at the East Basin Marina and crane launching facilities at the Port of Astoria boat yard. For information regarding Port of Astoria facilities and availability of transient moorage, see: <http://portofastoria.com/>.

Further information is available online at <http://www.astoriayachtclub.com/>. Any questions concerning these instructions, scoring, or any other racing issues shall be submitted in writing to the race committee at aycracecommittee97103@gmail.com. Written inquiries and responses will be posted online at <http://www.astoriayachtclub.com/>.

ATTACHMENT A



Race Entry Form

Please complete the entire form

Check one: Tuesday Series – All Races Tuesday Series – One Race
 Season Opener Memorial Cup Astoria Regatta Closing Day Race
 Other: _____

Boat Name: _____ Captain: _____
Sail Number: _____ Boat Type: _____ Length: _____
_____ PHRF Rating: _____

Racing Designation: (Check one) PHRF Level Class One-Design Cruising
Boats racing under PHRF Handicap shall have a current PHRF-NW rating certificate

Mailing Address: _____
Home Phone: _____ Cell Phone: _____ Email: _____
_____ Yacht Club Affiliation: _____
U.S. Sailing Membership Number: _____

In consideration of acceptance of my participation in this event, I acknowledge and agree that my boat has a liability insurance policy currently in effect covering bodily injury and property damage with a per occurrence limit of liability of not less than \$300,000 and said policy does not exclude yacht racing activities.

Each competing boat shall be responsible for providing to the race committee a crew manifest with emergency contact information for each crew member (Attachment B). Crew manifest information shall be provided to the race committee for each racing day prior to the race signal boat leaving its moorage, in the manner prescribed by the race committee.

Date: _____ Entry Fee Enclosed: \$ _____

Signature of Skipper: _____

Please mail or deliver this completed and signed form with the applicable entry fee to the race committee prior to the entry deadline indicated in the Notice of Race.





2019 SCHEDULE OF RACES

Event	Registration	Dates of Racing	Time of Warning Signal
Tuesday Racing Series	1730, May 7	May 7, 14, 21 & 28 June 4, 11, 18 & 25 July 2, 9, 16, 23 & 30 Aug 6, 13, 20 & 27 Sep 3, 10 & 17	1830
Pursuit Races	1730, July 2	7/2, 7/9, 8/6 & 8/13	1830
Season Opener	1000, May 4	May 4	1200
Memorial Cup	1000, July 20	July 20	1200
Astoria Regatta	1000, Aug. 10	August 10 & 11	1200
Closing Day Race	1000, Sept. 22	September 22	1200

NOTE 1: Pre-season competitor meetings for all skippers, crews, and anyone interested in the club's racing activities are scheduled for March and April at the Astoria Yacht Club. The first meeting will be held Tuesday, March 19 to discuss the club's upcoming racing season and race documents. The second meeting will be held Tuesday, April 16 to review maritime and racing rules. Each meeting will begin at 1830 hours.

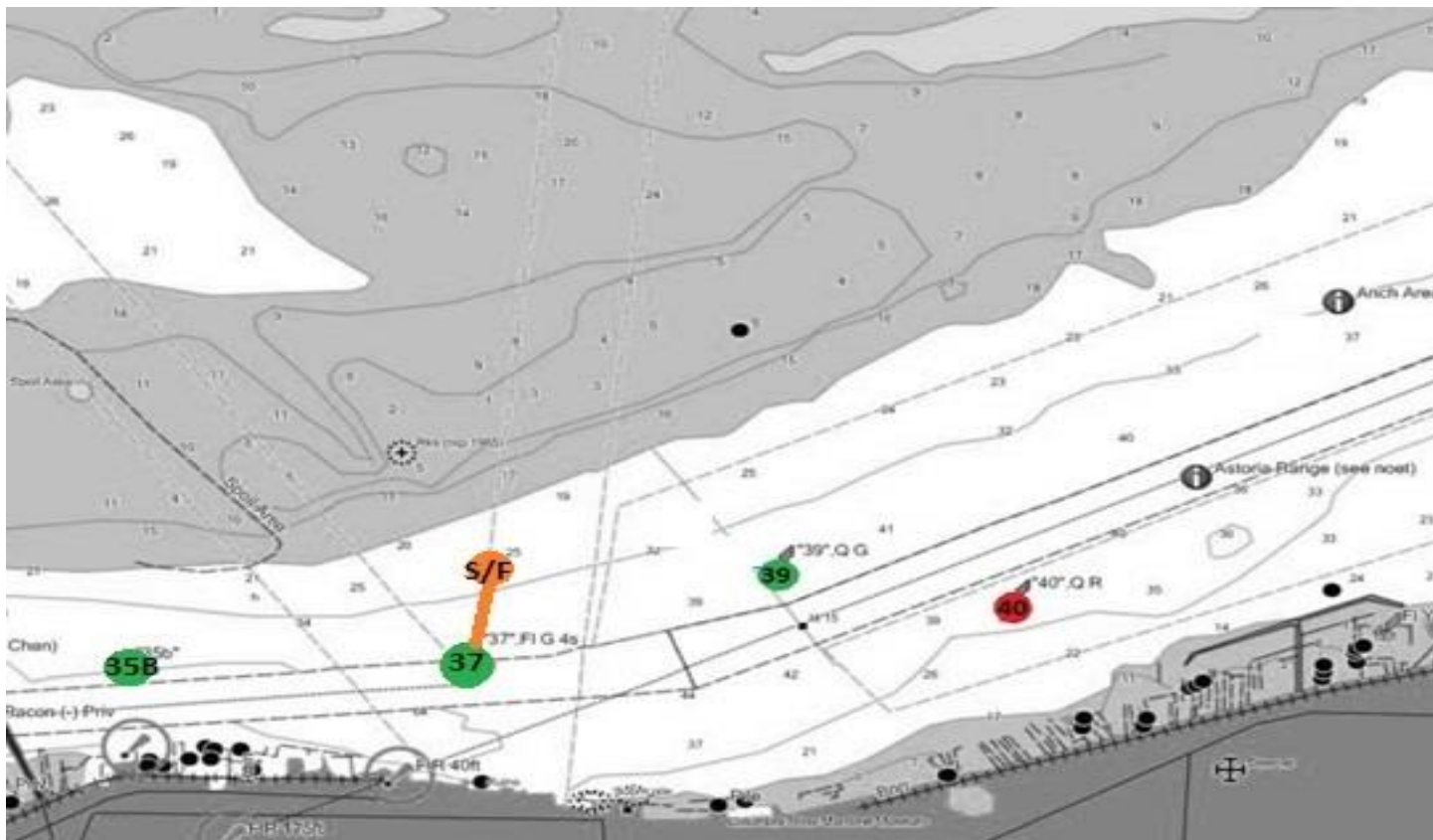
NOTE 2: For races that begin or end east of the Astoria-Megler Bridge, the race committee may start or finish races near the Columbia River Maritime Museum wharf to enhance the opportunity for community viewing of racing activities. Procedures for starting and finishing in that area will be announced at the competitor meetings prior to such races.

NOTE 3: Astoria Yacht Club plans to schedule various race skills training events during the racing season, including sessions for practicing safety and MOB recovery skills, night sailing, and sailing across the Columbia River bar. Dates, times and requirements for participation in such events will be posted on the Astoria Yacht Club web site.



ATTACHMENT E

Astoria Racing Area – East of Megler Bridge



- | | |
|---|---|
| 1) S/F - 35B - 40 - S/F (2.8 NM) | 2) S/F - 35B - 39 - 35B - S/F (3.1 NM) |
| 3) S/F - 35B - 40 - 39 - S/F (2.9 NM) | 4) S/F - 35B - 40 - 35B - 40 - S/F (5.5 NM) |
| 5) S/F - 35B - 39 - 35B - 39 - S/F (4.2 NM) | 6) S/F - 35B - 40 - 35B - S/F (? NM)* |
| 7) S/F - 35B - 39 - 35B - 39 - S/F (? NM)* | |

S/F = Start-Finish Line

* Need to verify actual distance

Numbers refer to navigation buoy numbers.
See NOAA "Columbia River" Chart #18521.