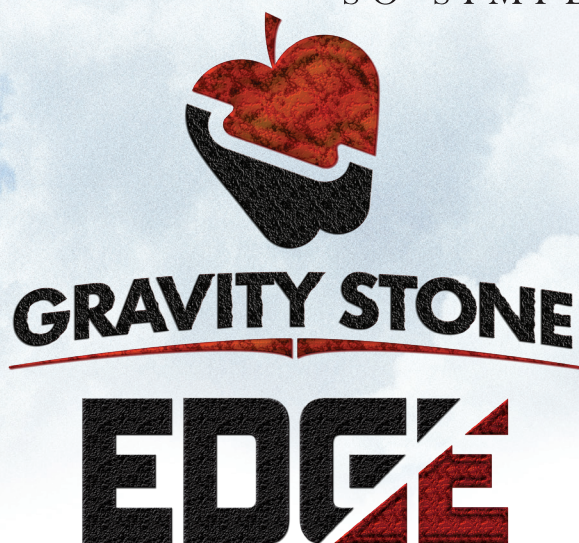


SO SIMPLE, IT'S ADVANCED.



An earth retention system that provides solutions to a variety of site needs and project requirements.

The 6-2-1 Advantage

- Six Structural Solutions.
- Two Reinforcement Systems.
- One Product.

"Since 1992, GravityStone® has been the most innovative and flexible SRW system in the industry. GravityStone® EDGE simply, expands this advantage."

- Jim Hammer, President of WestBlock Systems.

■ IMPROVING SRW SOLUTIONS:

- 33% more product and 15% less weight than traditional one square foot SRW's
- GravityStone® EDGE is more economic and flexible than other SRW or machine-laid products.

■ BELOW GRADE:

- Fills: Geogrid reinforced (MSE)
- Cuts: Cellular reinforced (Modular)
- Poor Soils: Slide Stop
- Sustainable Sites: Green Walls

■ ABOVE GRADE:

- Barriers/Parapets
- Columns
- Planters

■ AESTHETICS:

- Optional Textures and Geometry

■ ALIGNMENT:

- Reversible Alignment Plug (RAP)
- Concrete Alignment Nub (CAN)



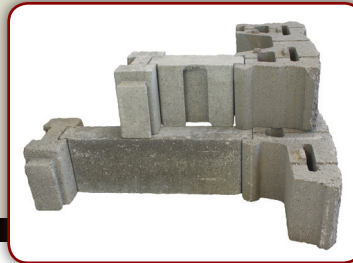
WESTBLOCK SYSTEMS®

An Engineered Earth Retainage Product

1.33 SF. RADIUS FACE WITH ASHLAR PATTERN: 2 STONES THAT APPEAR AS 3

GRAVITYSTONE® EDGE UNITS A & B

GRAVITYSTONE® EDGE UNITS A & B WITH MODULAR



GRAVITYSTONE® EDGE A & B:

- Dimensions: 24" x 8" x 10.5"
- (1.33 sq. ft. of face area)
- Average Weight: 88 lbs.

SIX SOLUTIONS:

1 & 2: GravityStone® EDGE, combined with Geogrid reinforcement for use in "Fills" or connected to the patented Modular components, forms narrow cellular reinforced walls for use within "Cuts".

3 & 4: By interconnecting the two systems, GravityStone® Hybrid designs are created. Built vertically or laterally, GravityStone® Hybrid maximizes the advantages of each system within one wall.

5: On sites containing poor soils and requiring a narrow wall, Slide Stop® provides the resistance to counteract low strength soil.

6: Above-grade: Double-sided, free-standing walls, columns, barriers, or parapets are easily assembled with the Modular components.

TWO SYSTEMS:

MSE: "Fill" sites are typically are best served by EDGE combined with Geogrid reinforcement. Expanding the depth of EDGE with the Modular components, or using the positive connection system increases the connection strength for taller or high stress walls.

Modular Stack N' Fill: Assemble the components and place the aggregate, it's that easy. Modular's small footprint typically requires 30% less depth than MSE allowing a fit on tight sites, eliminating excavation, and providing all weather construction.

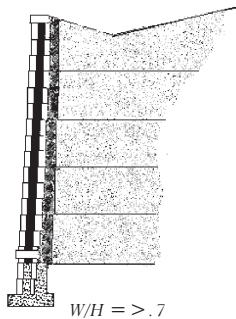
ONE ANSWER:

GravityStone® is the industry leader in structural design flexibly for Segmental Retaining Wall products. 6 design solutions, 2 reinforcement systems, and 1 excellent product.

FILL SITES

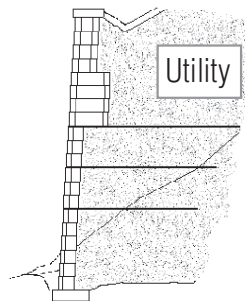
CUT SITES

MSE

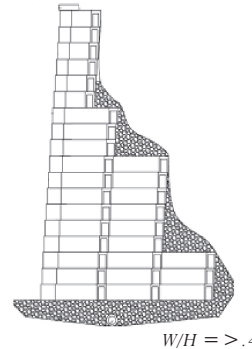


Hybrid

Back Wall Easement

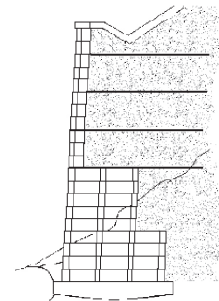


Modular

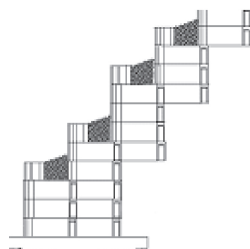


Hybrid

Steep Slope

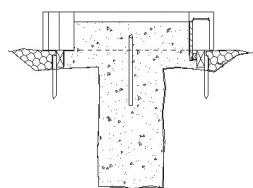


Naturally Planted Green Walls



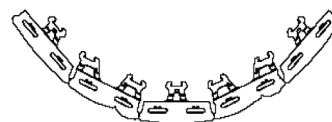
Slide Stop

Poor Soils, Limited Space



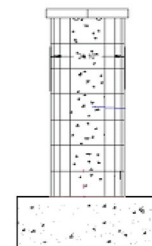
Radius

Minimum 50"



Above Grade

Barriers, Columns & Planters



GENERAL INFORMATION

Product manufactured to ASTM 1372 Specifications

Minimum Compressive Strength: 3,000 p.s.i.

Minimum Water Absorption: 13 lbs./ Ft 3

Dimensional Tolerance: (+/-) 1/8"

Product# 97-24-00

Actual unit dimensions, weight, color and availability may vary or change without notice, contact the manufacturer for details.

GravityStone is a licensed product of Westblock Systems, Inc. GravityStone and Westblock Systems are registered trademarks of Westblock Systems, Inc. U.S. Patent Nos. D611,165; D611,166; D611,167; D611,168; D610,712; D615,668, and 7,503,729.

