



## 1930 CORNELIA STREET, OFFICE

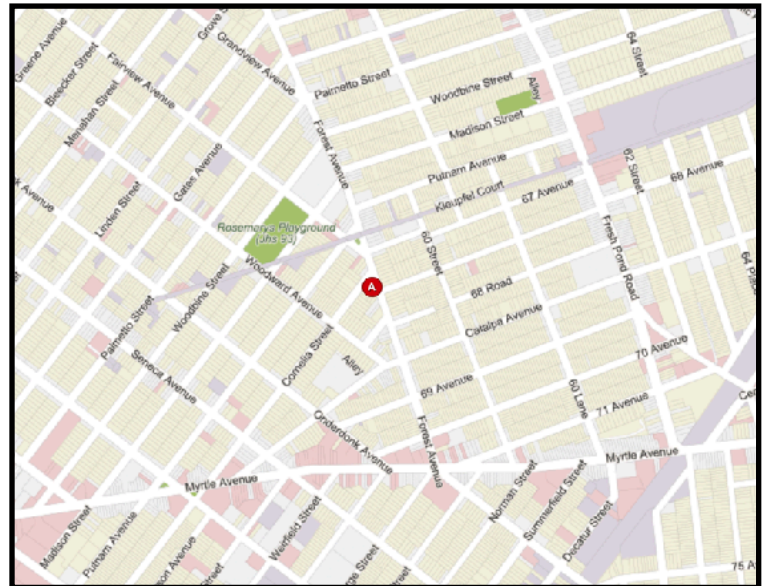
LOCATED BETWEEN FOREST AVENUE AND  
WOODWARD AVENUE

- 450 SF corner retail office on Forest Avenue
- Total of 23 FT of frontage on Forest Avenue
- Spacious, private restroom
- Heavy foot traffic + excellent exposure
- Beautiful hardwood floors
- Recessed lighting
- Tenant-controlled heat and A/C
- Bell/buzzer entry system
- Security cameras on interior and exterior of space
- Roll gate + gated exterior
- Phone and cable system in place
- Plenty of windows for natural light and visibility
- Outdoor space available for use on both Forest Avenue and Cornelia Street
- Just a short walk to the M train (Forest Avenue)
- 13-minute walk to the L train (Halsey St)
- Steps to multiple bus lines
- Previously a property management office
- All uses considered
- Immediate possession

LICENSED SALESPERSON  
STEVE DAVID

PHONE : 347.578.1450  
E- MAIL : [STEVE@EVRGREALTY.COM](mailto:STEVE@EVRGREALTY.COM)

**\$1,750/MONTH**



**CORNER TURNKEY RETAIL OFFICE ON FOREST AVENUE**

