



USER GUIDELINE

Thank you for choosing MOON light!

*For using this product safely and conveniently and keeping it well-preserved, please read this manual carefully before using. Please save this manual for future reference.

*Due to the improvement of the product, the product you bought may not be exactly in accordance with the introduction of this manual. We apologize for that.

SPECIFICATION

*1 pc (30 chips) Rectangular ring COB high brightness red LED

*CNC Aluminium heat sink casing

*Light sensitive auto ON/OFF

*Auto safe mode

*Mode memory function

*Rechargeable lithium polymer battery (3.7V 300 mAh)

*7 modes: Mode1 / Mode2 / Mode3 /

FL1 / FL2 / FL3 / DAY FLASH (DOUBLE BLAST)

*Quick release universal bracket RB-22

(fits all round bars and AERO style bars)

*Low battery, charging and fully charged indicator

*Automatic fully charged cut-off system

*Side visibility

*Water resistant (IPX 4)

CONTENTS INCLUDED



Contents:

*ARCTURUS-AUTO

*RB-22 (Universal bracket)

*2 O-rings for mounting

RS-G (fits 20-35 mm diameters)

RS-H (fits 35-52 mm diameters)

*BK-21 (Belt clip)

*USB-WP (Water resistant USB cable)

Optional accessories:

*RB-19 (Rear rack mount bracket)

*RB-21 (Saddle rail bracket)

*RB-23 (Helmet bracket)

LIGHT OPERATION

Automatic status

* Standby - flashing orange

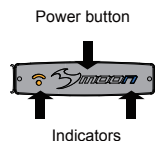
* Working - steady orange

Low battery status

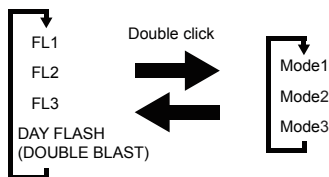
* Steady blue

Auto safe mode

* Flashing blue

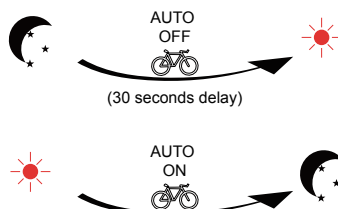


1. Double click the power button to toggle between the steady and flashing modes. (With mode memory, the light will resume previous mode upon next usage.)

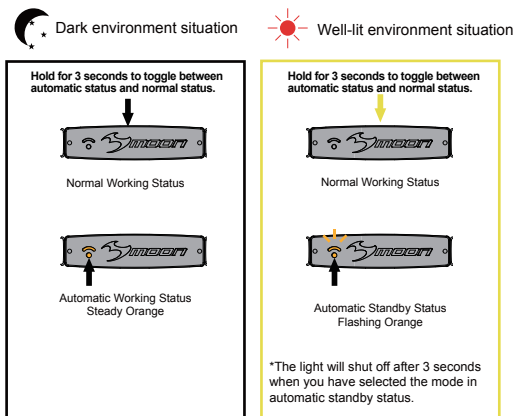


2. Press and hold the power button about 1 second to switch off. (With mode memory, the light will resume previous mode upon next usage.)

LIGHT SENSITIVE AUTO ON/OFF OPERATION



1. Turn on the light.
2. Press and hold the power button about 3 seconds to toggle between automatic status and normal status.
3. Select the mode you want to use by press the power button.



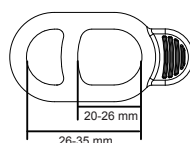
4. Press the power button about 1 second to switch off.



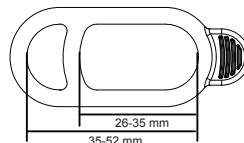
Remember to switch off the light when you do not use it.

HOW TO MOUNT THE LIGHT

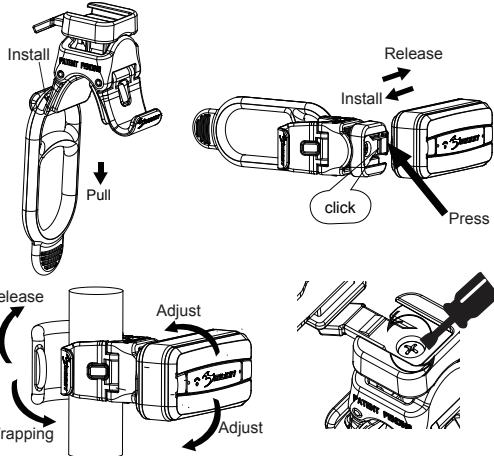
1. Choose the strap to fit in the bar.
2. Make sure the strap is clicked in place of the hook.
3. Hold the light on the handlebar/seat post.
4. Wrapping rubber strap around bar and stretching strap around hook to secure.
5. Slide the light forward onto bracket until it clicks into place.
6. Press down release lever to remove.



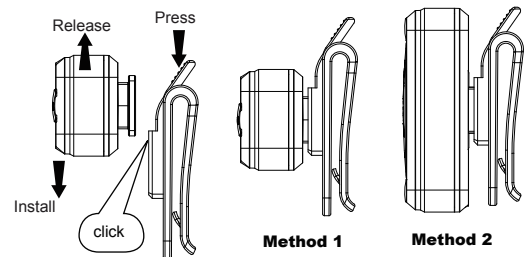
RS-G
20-35 mm



RS-H
35-52 mm

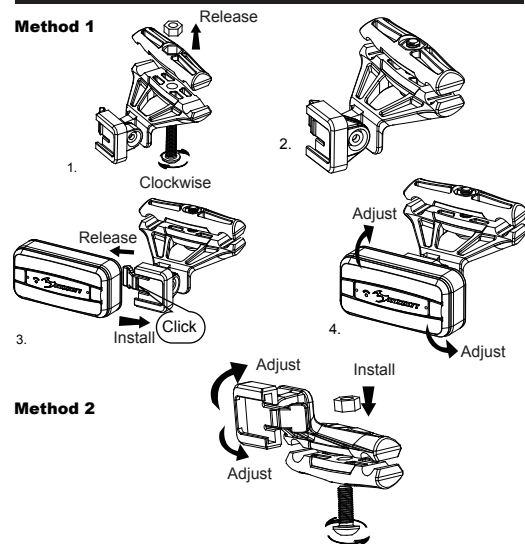


7. Adjust the vertical beam angle when mounted on the seatpost, loosen the screw knob and band the light up or down for your preferred angle, then tighten the screw knob to secure the light in place.



1. Slide tail light forward onto belt clip until it clicks into place.
2. Press down release lever to remove.

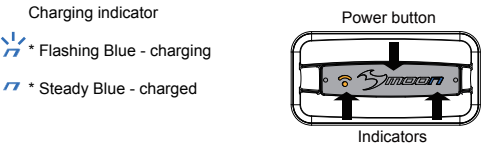
HOW TO MOUNT THE LIGHT



1. Loosen the screws in the saddle bracket with the Allen key.
2. Clamp the bracket onto the saddle rail.
3. Align the screw holes, using the Allen key to tighten the bracket.
4. Slide light forward onto bracket until it clicks into place.
5. Press down release lever to remove.
6. Twist the light body to adjust the vertical angle.

HOW TO CHARGE BATTERY

Attention: If you do not use the battery for a long time, be sure to fully recharge every 3 months. Please store the battery in a cool and dry place. Recharge battery after each long usage.



CAUTION

- *Do not charge over 5V the battery will result in damage.
- *Light sensor mode must be off before charging.
- *Keep away from flammable objects while charging as this may lead to fire or battery explosion.
- *Do not smoke while charging as the battery may release hydrogen gas. Always charge your battery in a well-ventilated space.
- *Never connect or disconnect the plug or cord with wet hands whilst charging. Do not connect or disconnect the plug or cord when they are wet, it may lead to electric shock.

1. Find the charging place at the back of the light.
2. Lift the rubber cover and you'll see the charging port.
3. Plug the USB cable to your computer USB port.
4. Plug the charger cable to the light charger port.
5. The charging indicator shows slow flashing blue when the light is charging, after fully charged it changes to steady.

6. It is normal that the battery may get high temperatures during charging (up to 104°F/40°C), as the chemical in battery is in reaction. If the battery is not drained completely before charging, it may also get warm.

7. Several factors can influence the battery's durability: type of cell strain, the maintenance routine, the temperature and number of charges etc. Normally speaking, the higher the battery capacity, the longer the burn time.

8. The battery capacity may become ineffective about 80% of its value after 300-500 charge/discharge cycles. The battery can may 3 years life span under good care.

9. The battery voltage and capacity decrease apparently at low temperatures, especially near or below ice point. The capacity decreases 5%-10% at freezing (burn time decreases 50%). At -20°C, the capacity decreases 30% (burn time decreases 70%). The battery performance will return normal when the temperate gets up to 70°F/20°C. The battery will lose around 1% of its capacity per day when you store the battery at normal room temperature. Battery temperate should never exceed 104°F/40°C, it will lose about 5% of its capacity per day.

10. If you do not use the battery for a long time, be sure to fully recharge every 3 months. Please store the battery in a cool and dry place.

AUTO SAFE MODE

1. When the signal " N " turns on, it means the battery is low. You should charge your light.



Steady-Blue

2. When the signal " N " flashes, it means that is in very low power stage, then the safe mode will be on and cannot be changing mode accordingly. The light may have an hour left for usage. (Depending on which mode the light was on before entering safe mode, it would affect the run time of safe mode before battery is completely drained.)



Flashing-Blue

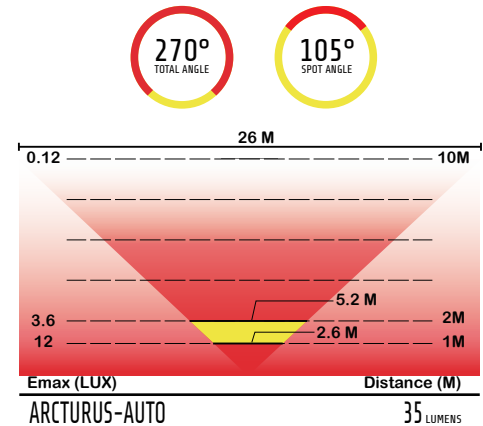
RUN TIME

Hold for 3 seconds to toggle between automatic status and normal status.

Mode	Lumens	Run Time	Recharge time
Mode1	10	3:45	
Mode2	15	2:20	
Mode3	35	1:20	
Double click		(Auto safe) around 1 hr	2 hrs
FL1	10	13:00	
FL2	35	5:00	
FL3	35	8:00	
DAY FLASH (DOUBLE BLAST)	70	16:30	

Weight: 30 g

* The time of recharging depends on which method (wall charger or computer) is being used.



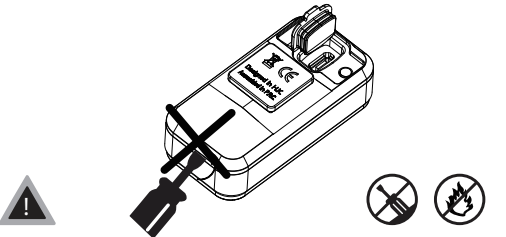
SIMPLE PROBLEMS ANALYSIS AND SOLUTION

- 1. Problem: The light is not on**
- Solution: Check if the battery still has power
- Check if the power button is pressed hard

HOW TO CLEAN AND CARE THE LIGHT

*Make sure to clean the dust and dirt on the light with soft damp cloth after every ride.

*Water resistant is for rain water only. Do not submerge the battery or the whole light into water when cleaning.



CAUTION: When riding at night, please follow the guidelines below:

- *Carrying a flash light is recommended.
- *Use caution when handing, the light may get hot.
- *Unplug the light if not in use.
- *Unplug connector by the plug, never by the cable.
- *Do not dismantle the light.
- *Provide sufficient airflow to the light for cooling during use.
- *Do not control any part of the system under water.
- *Do not look directly at light.
- *Do not leave the light on and unattended.
- *Keep the light away from fire and combustible materials.
- *Do not store head unit when hot or straightway after use.
- *Unplug the light, charger and cable once the battery is fully charged.
- *This light is for bicycle use only.

WARRANTY

MOON warrants to the original purchaser of this product that the product is free from defects in material and workmanship for a period of one year. This warranty does not apply to damage due to heat, physical damage resulting from abuse, neglect, improper repair, improper fit, or alterations of the fixture. This warranty is in lieu of all other agreements and warranties, general or specific, express or implied and no representative or person is authorized to assume liability on behalf of MOON in connection with the sale and use of this product.

MOON reserves the right to request the return of any product submitted for warranty consideration. All customers should contact the local dealer or regional distributor for warranty service.

To make a claim, first call local dealer or regional distributor. Some issues may be resolved upon the initial call. If return of the product is necessary, please refer to the following instructions:

- *We recommend that items be sent by a traceable method (such as FedEx or UPS). MOON is not responsible for lost or misdirected packages.
- *Please include your full contact information (name, address, phone number, and email (if applicable)), and a description of the issue.
- *Address items to: local dealer or regional distributor

What is not covered: MOON Lights are covered by a ONE YEAR LIMITED WARRANTY from the date of purchase. This covers the lights and cables only. It does not cover the battery or battery internals.

Batteries are covered by 120 days warranty.

For more information please contact us at cs@moon-sport.com. <http://www.moon-sport.com>

*The specifications and design are subject to change without notice.