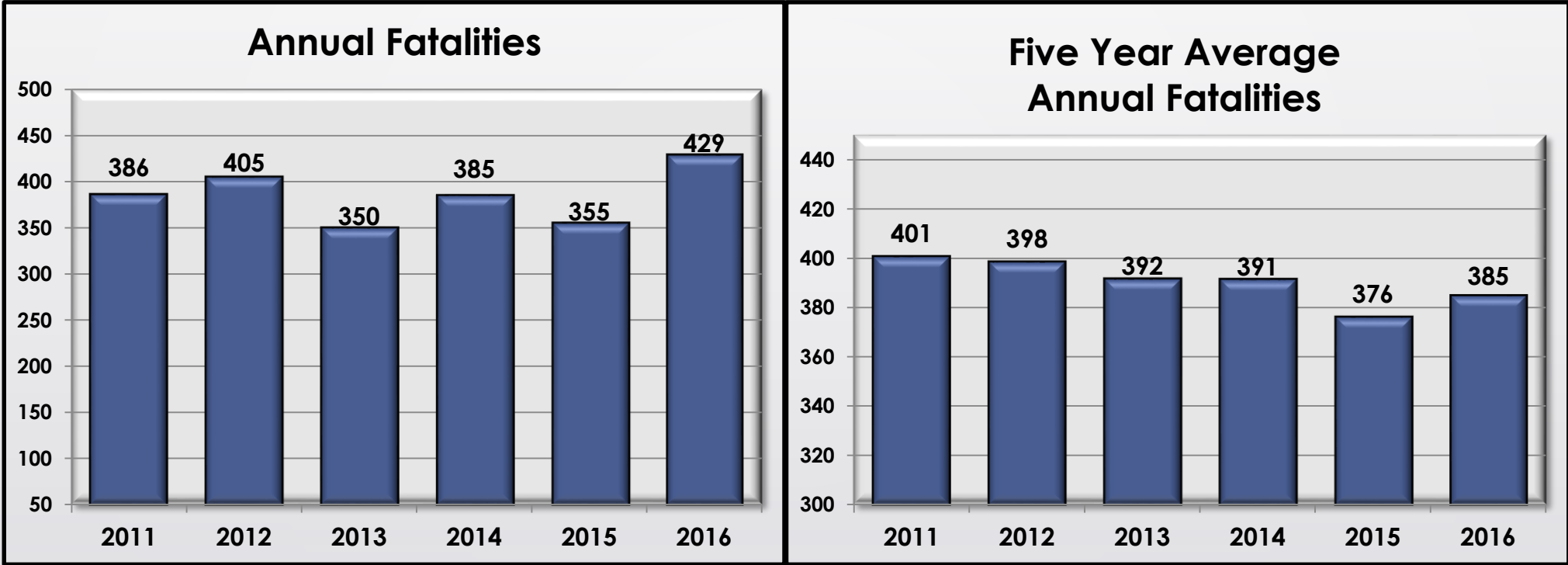


2016 Dashboard Report

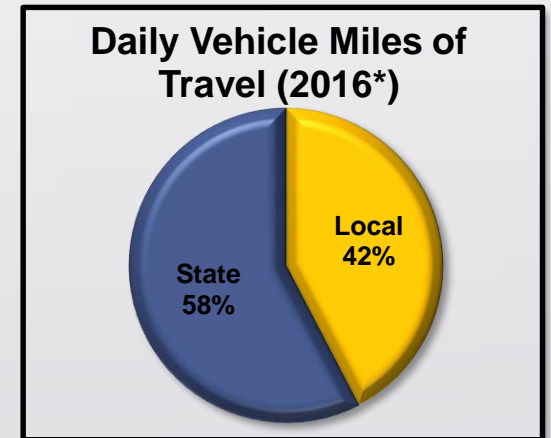
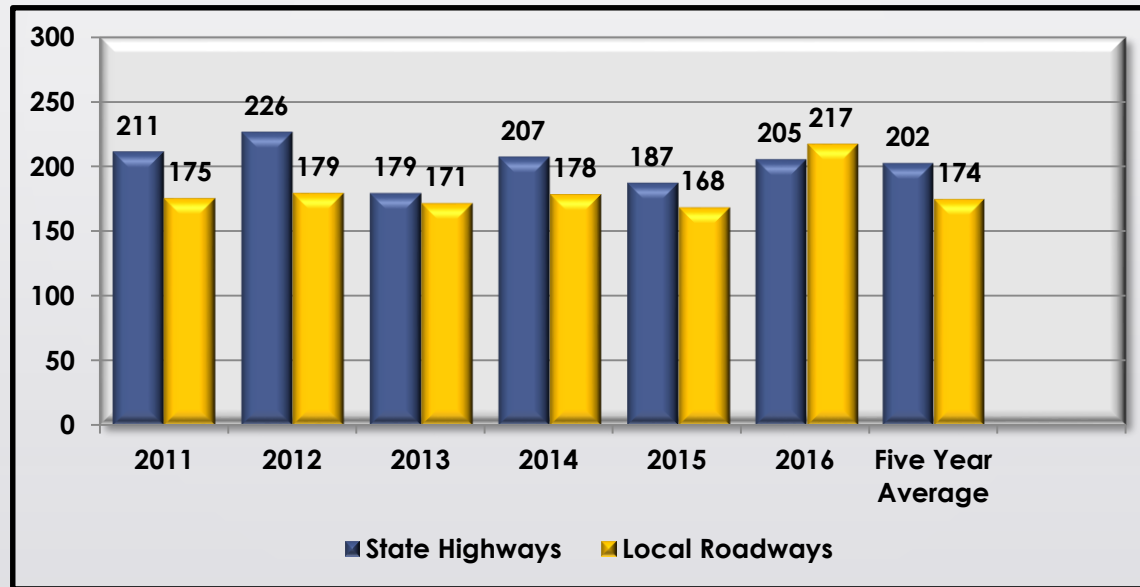
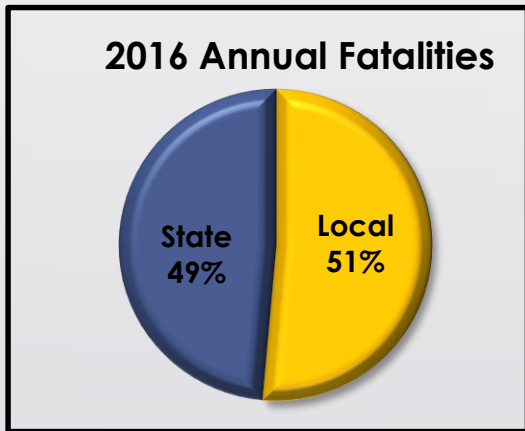


Statewide Fatalities



Local and State

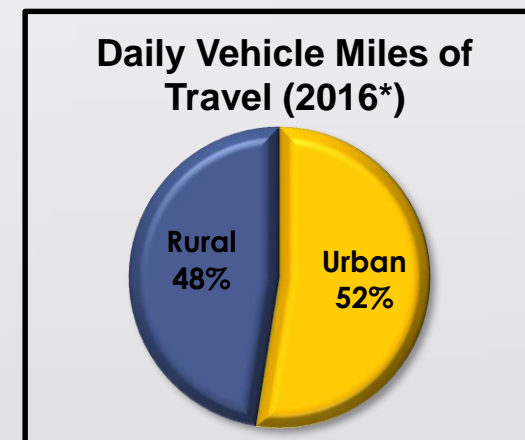
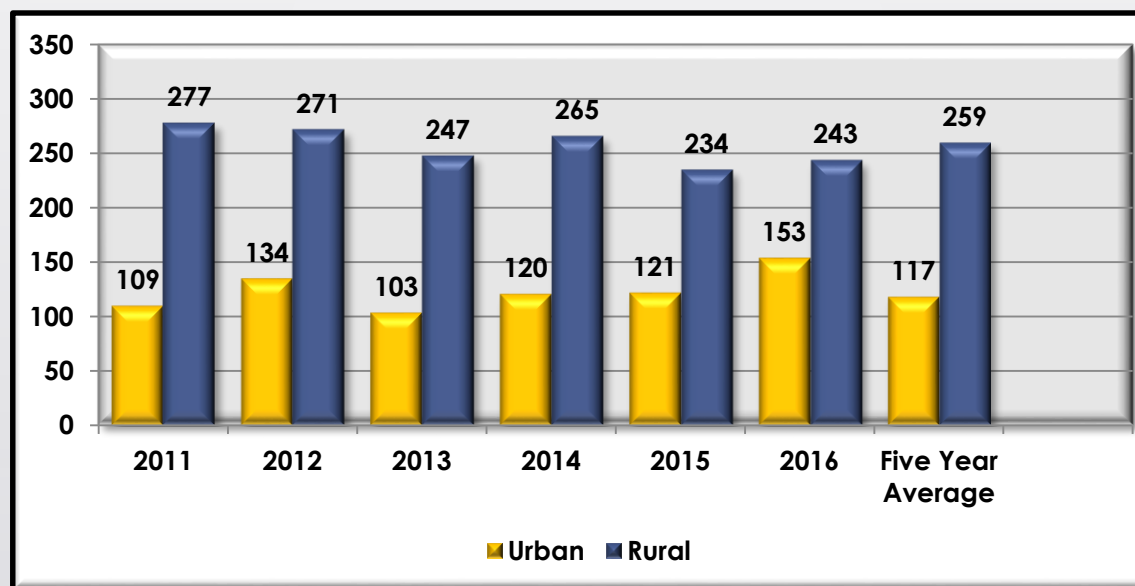
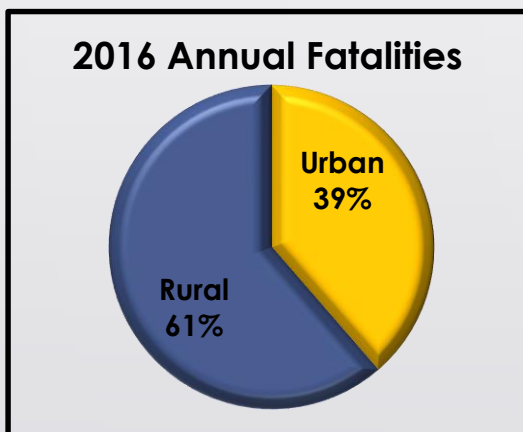
Local Roadways			State Highway System		
2016 Annual	5 Year (2011-2015)	Percent Change	2016 Annual	5 Year (2011-2015)	Percent Change
Local Fatalities	Fatality Average		State Fatalities	Fatality Average	
224	174	29%	205	202	1%



*preliminary data

Rural and Urban

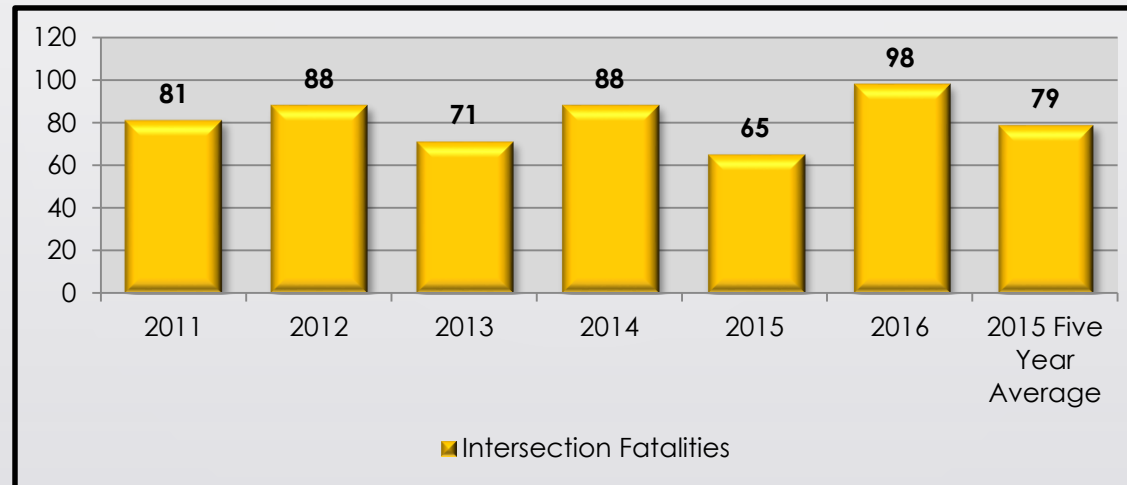
Rural Roadways			Urban Roadways		
2016 Annual	5 Year (2011-2015)	Percent Change	2016 Annual	5 Year (2011-2015)	Percent Change
Rural Fatalities	Fatality Average		Urban Fatalities	Fatality Average	
243	259	-6%	153	117	31%



*preliminary data

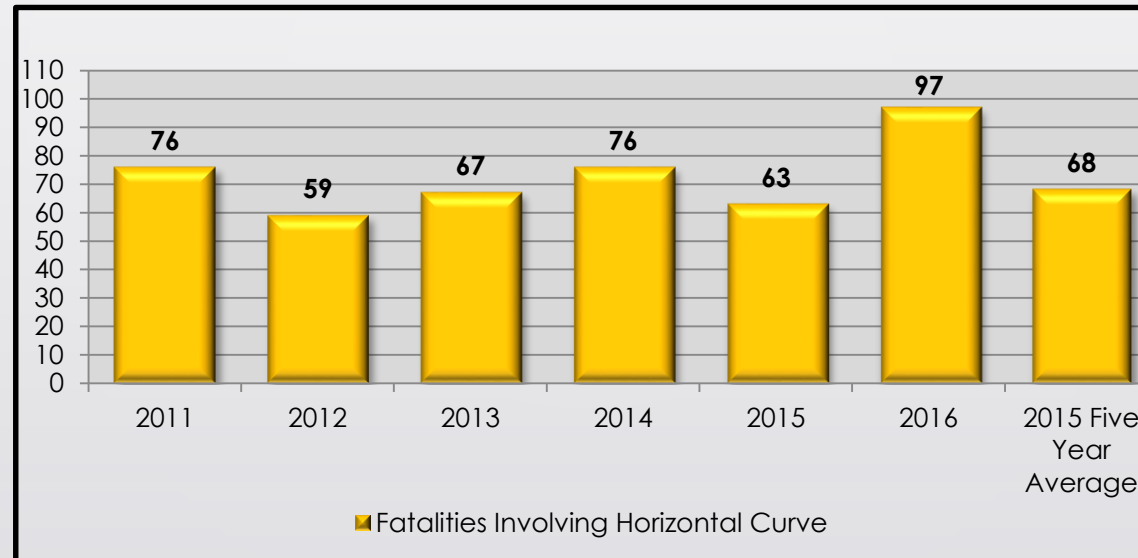
Intersections

Intersections		
2016 Annual Intersection Fatalities	5 Year (2011-2015) Fatality Average	Percent Change
98	79	24%



Curves

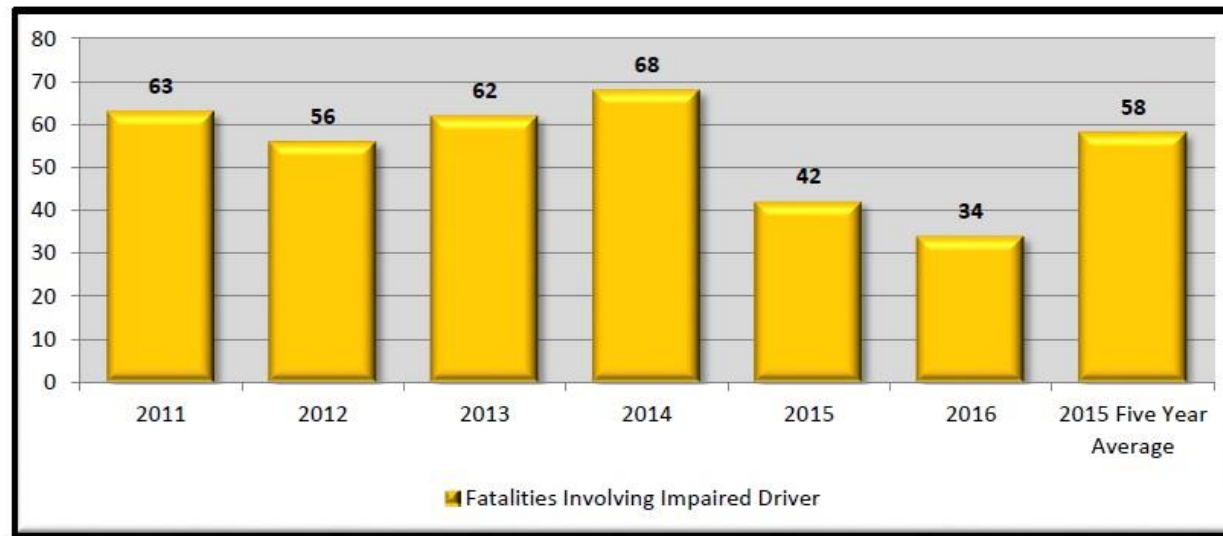
Curves		
2016 Annual Fatalities Involving Curves	5 Year (2011-2015) Fatality Average	Percent Change
97	68	



Impaired Driver

2016 Annual Fatalities Involving Impairment	5 Year (2011-2015) Fatality Average	Percent Change
34	58	-42%

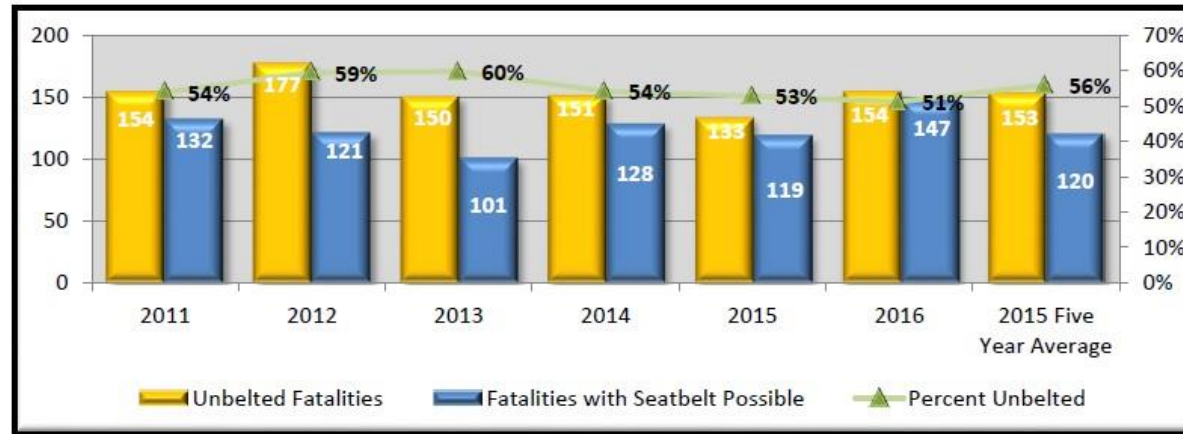
*Note: This does not include the 2106 fatalities that are still awaiting or have pending toxicology results



Occupant Protection

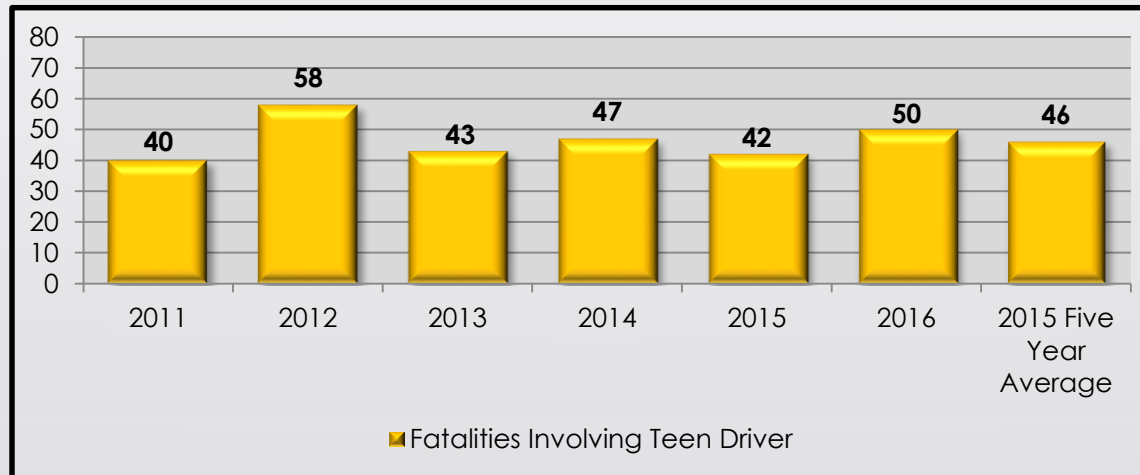
2016 Annual % Unbelted Fatalities	5 Year (2011-2015) Average % Unbelted	Percent Change
51%	56%	-9%

*Excludes Unknown Usage, ATV, Motorcycle, RV, Farm Equipment, and Pedestrian



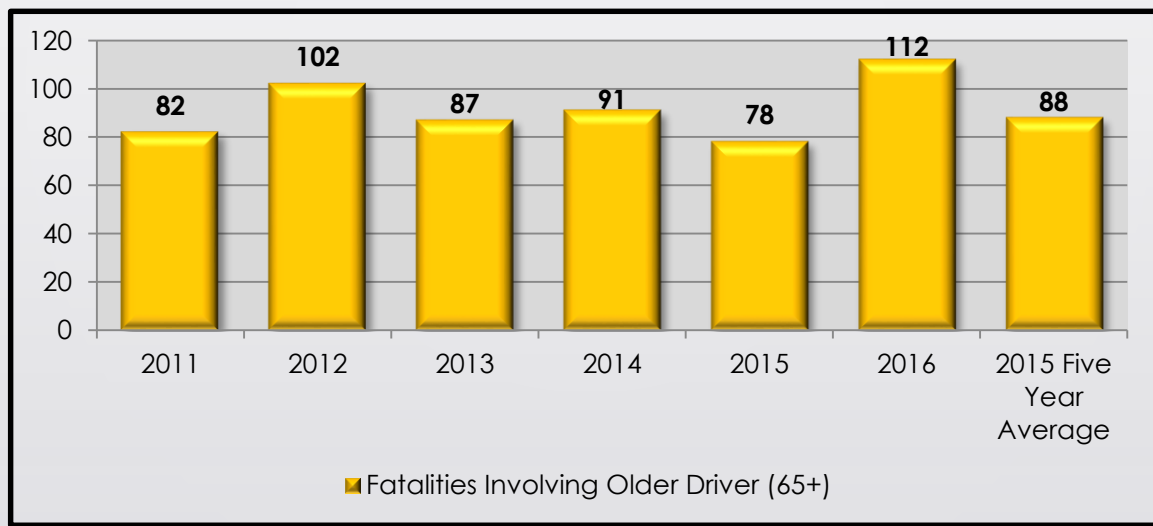
Teen Driver

Teen Driver (Age 14-19)		
2016 Annual Fatalities Involving Teen Drivers	5 Year (2011-2015) Fatality Average	Percent Change
50	46	



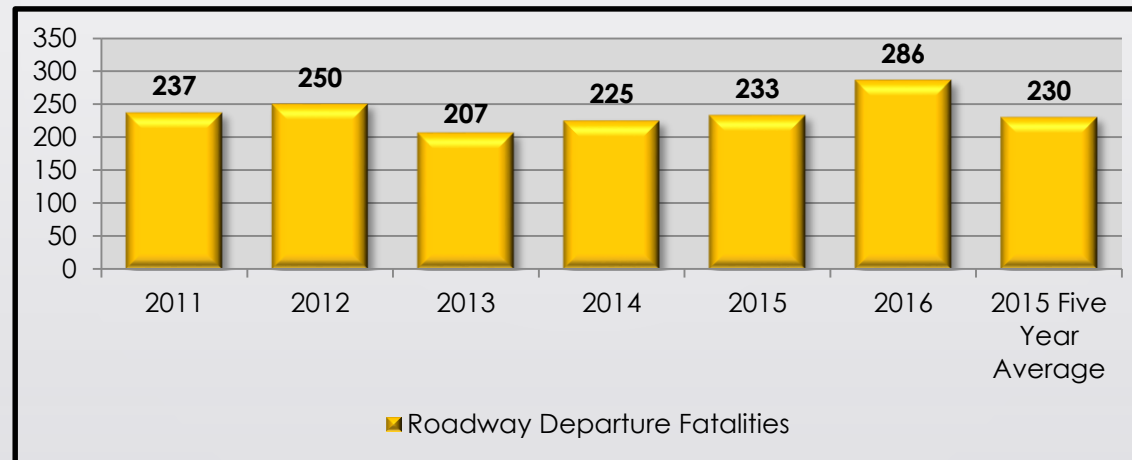
Older Driver

Older Driver (Age 65+)		
2016 Annual Fatalities Involving Older Drivers	5 Year (2011-2015) Fatality Average	Percent Change
112	88	27%



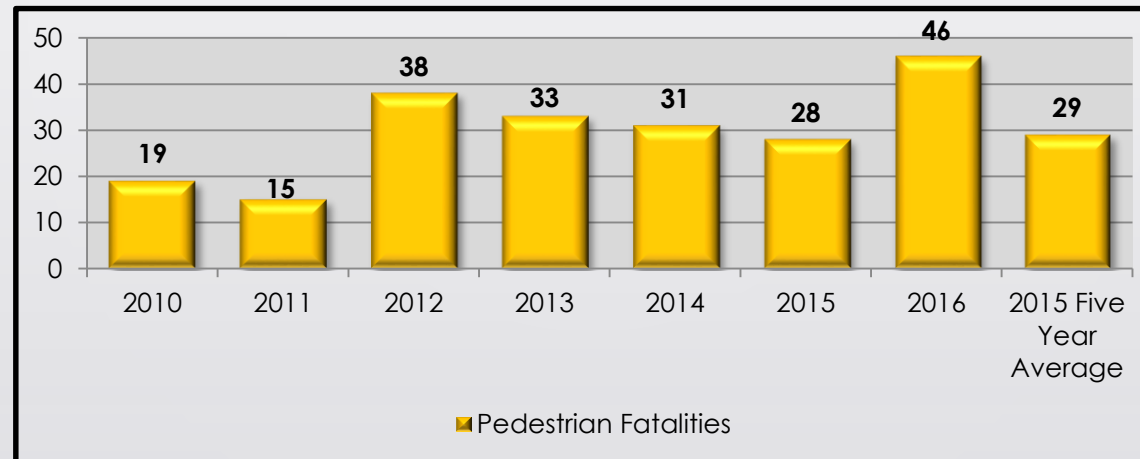
Roadway Departure

Roadway Departure		
2016 Annual Roadway	5 Year (2011-2015)	Percent Change
Departure Fatalities	Fatality Average	
286	230	24%



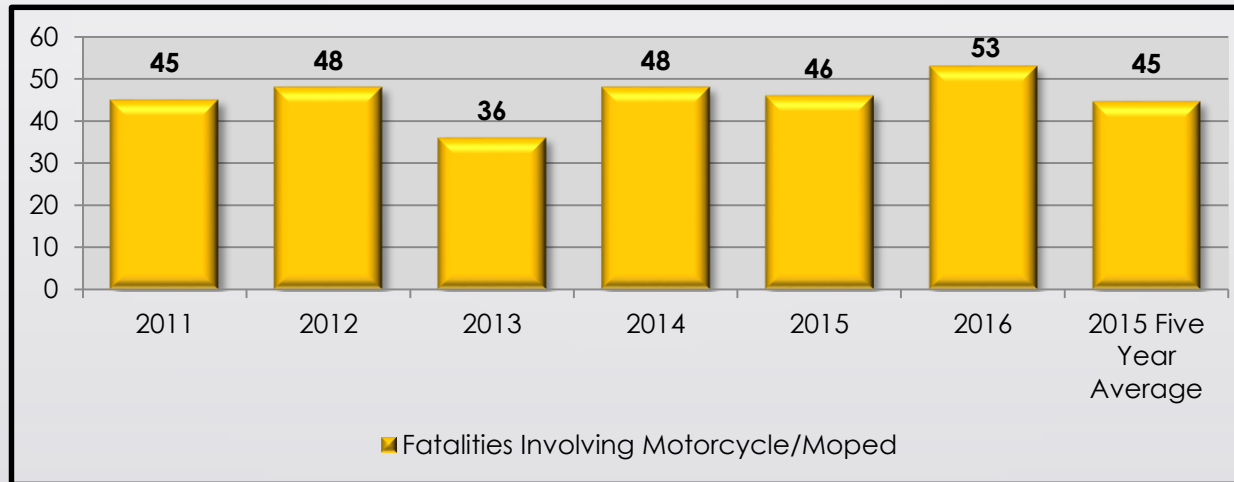
Pedestrians

Pedestrians		
2016 Annual Pedestrian Fatalities	5 Year (2011-2015) Fatality Average	Percent Change
46	29	
		59%



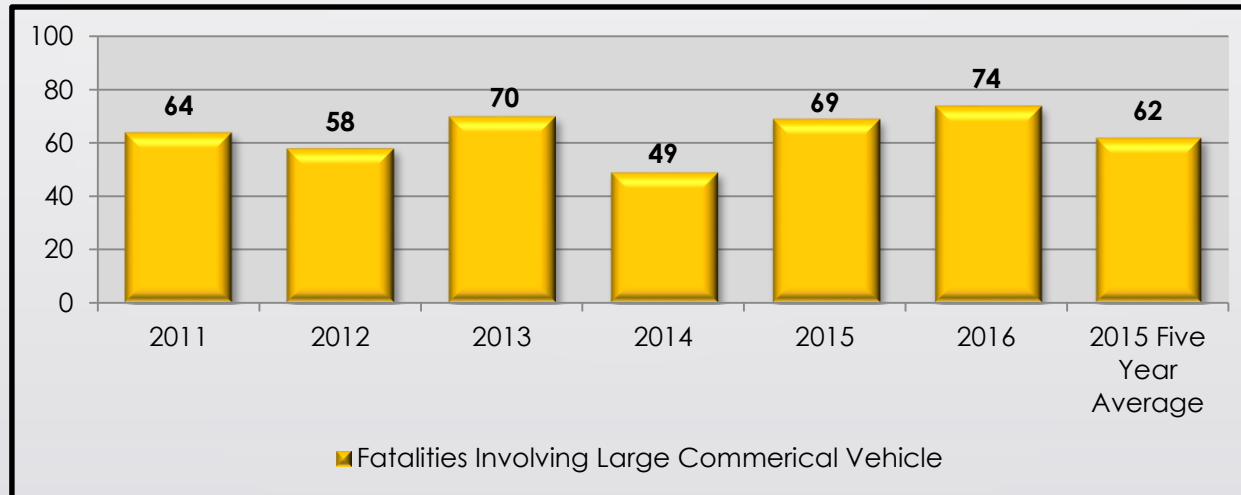
Motorcycles and Mopeds

Motorcycles and Mopeds		
2016 Annual Fatalities Involving Motorcycle/Moped	5 Year (2011-2015) Fatality Average	Percent Change
53	45	18%



Large Commercial Vehicles

Large Commercial Vehicles		
2016 Annual Fatalities Large Commercial Vehicles	5 Year (2011-2015) Fatality Average	Percent Change
74	62	19%



Cumulative Fatalities by Category (2012-2016)

