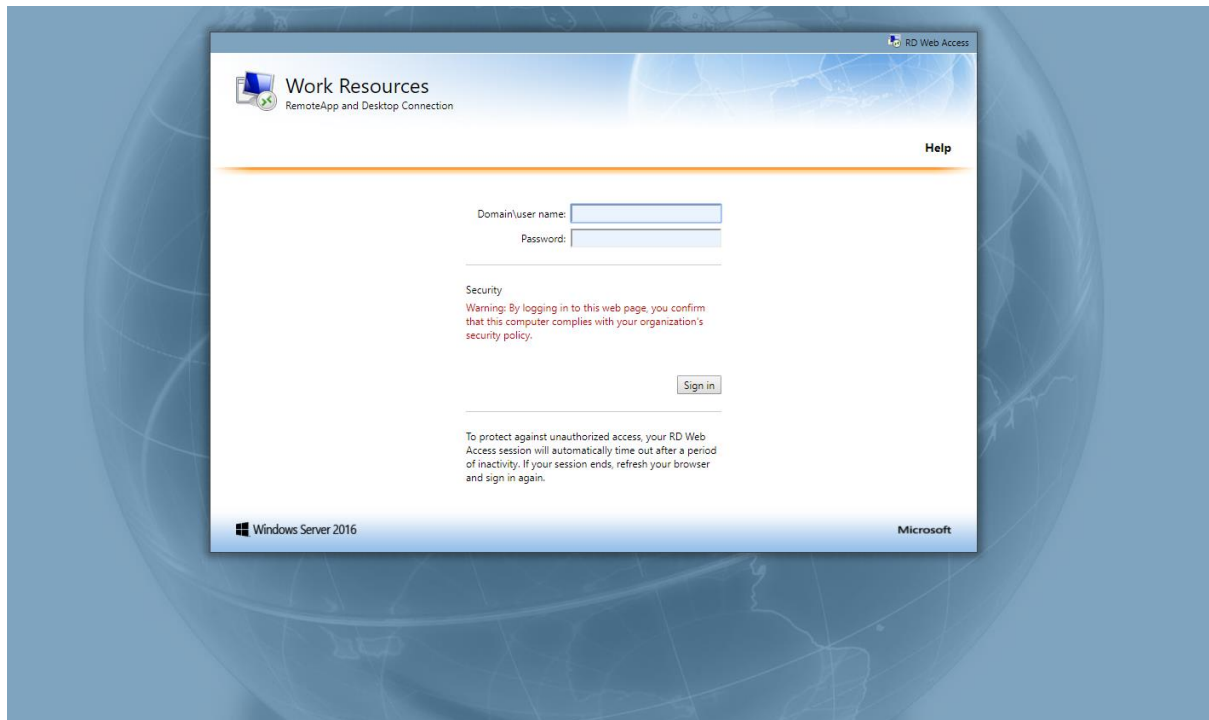


1. Click the link below, or copy and paste it into your browser:

<https://vdi.sthsch.com/RDWeb>

2. The login page should appear like this:

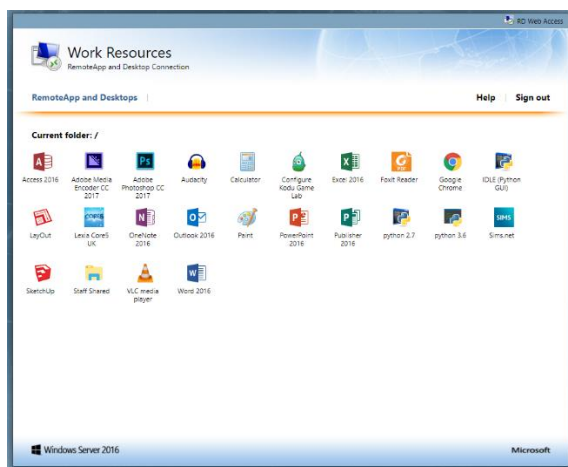


3. In the login box type **sth** and then your school network username (e.g.12smithj), then enter your password and click the Sign In button.

Domain\user name:

Password:

4. Once you click login you will see something like this.



5. To run an App or access the Staff Shared/My Documents folder just click on the relevant icon. **Note: Depending on your browser, the program will either open straight away or it may download an RDP file which you will then need to open.**

A box will appear asking the following, click the Connect button to allow it to run.

