

K-SPAN

2016

April / May

Volume 76 - Issue 04



Photo courtesy of the Bureau of Land Management

By Bob Wick

Photos and articles can be submitted to:

Kspan@email.com



June 22-26, 2016
International Convention
Toronto, Ontario Canada
Toronto Metro Convention Centre
<http://www.kiwanis.org/convention/2016>



Key Leader

Kiwanians, we ask you to print and share with their members,
Key Club and Builders Clubs members too thank you!



July 10, 2016
Kiwanis Flathead Lake Cruise
\$30 Adults, \$20 Kids
RSVP
bamonaco77@gmail.com

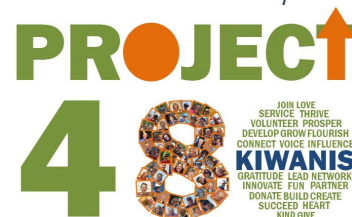


Spiritual Aims

Rough Time

Lauren Damschen Memorial

Goodbye Papa Paul



MEMBERSHIP UPDATE
CLUB LEADERSHIP
TRAINING



August 11-14, 2016
District Convention
Medicine Hat, Canada
[Page One](#)
[Page Two](#)



DIVISION
SNAPSHOTS

See what your fellow clubs are up to

- Division 4
- Division 6
- Bootlegger Ball
- Harlowtown Kiwanis Show
- Division 7
- Division 3
- Divisions 6 and 9
- Division 1
- Divisions 1, 2, and 8
- Division 5 and 2



March 3-5, 2017
MidWinter Conference
Radisson Colonial
Helena, MT



July 13-16, 2017
International Convention
Palais des Congress
Paris, France



June 28-July 1, 2018
International Convention
Paris Hotel
Las Vegas, Nevada



June 27-30, 2019
International Convention
Coronado Springs
Orlando, Florida
Walt Disney World



JOINT DISTRICT CONVENTION

Registration

Quick Links

Convention Line Up



Kiwanis Liquor
Liability

Know the facts in advance

Over
view

KI
Policy

App



2016 INTERNATIONAL CONVENTION

Welcome Message

Info Sheet Page One

Info Sheet Page Two



2017 INTERNATIONAL
CONVENTION
TOUR AND CRUISE

Share Successes and View Your Impact on Montana

WEBPAGE



KSpan:

How can I get more information about my club in the K-Span or Facebook page? If you have any news, projects, or fundraisers for the District newsletter, please contact Hana at kspace@email.com. The KSpan comes out six times per year.



Kiwanis Liquor Liability

The Summer special event season is underway and some Kiwanis events may involve Beer & Wine. It is **critically important** that clubs are legally & technically correct concerning Liquor Liability Insurance.

Click for
Kiwanis
Alcohol
Policy

Click for
MT Dept.
of
Revenue
Permit

In past years, Liquor Liability was "Excluded", or NOT COVERED by the Kiwanis General Liability Insurance program.

This has changed. Since "Liquor Liability" is now included in the Kiwanis Insurance program, your club can now responsibly sell beer and wine at a FUND RAISING even with the appropriate State of Montana permit. **YOU MUST HAVE THE LEGAL PERMIT**, or the insurance does not apply!

- A Kiwanis club must first qualify as a 501(c)3 and/or 501(c)4. If you are not legally registered as a non-profit, you are out of luck!
- You will need to secure a state permit (see the link above or on the K-Span appendix to sell beer and table wine) from the Montana Department of Revenue / Liquor Control Division.
- Your application must be signed-off by local Law Enforcement (Police or Sheriff) to approve the event.
- The cost is \$10.00 per day, not to exceed 10 days if multi-day.
- A 501(c)3 organization can have a maximum of 3 permits per year. A 501(c)4 can have a maximum of 12 permits per year.
- There is no provision or option for the sale of HARD LIQUOR; so don't go there!
- Send the check with the application to the Montana Department of Revenue and allow a minimum of ten days processing time.
- The application must be approved by the Montana Department of Revenue / Liquor Control Division, who will send you a permit.
- With approved permit in hand; I am told you can contact your local beer/wine dealer to purchase at wholesale cost.

"LIQUOR LIABILITY" provides insurance coverage for Defense of Settlement costs for a claim where the Club is legally liable due to negligent action in the sale of beer or wine that was the proximate cause of injury.

- In 2008 an estimated 11,773 people were killed in the USA in alcohol impaired driving crashes.
- Nearly 1/4 of all alcohol-impaired fatalities involved impaired drivers between the ages of 25 and 34.
- Men compromise about 83% of all alcohol impaired drivers involved in fatal crashes.
- Folks, you can blow .08 BAC having consumed about 3 drinks in 1 hour!

CAUSES OF LEGAL ACTION RESULTING IN A CLAIM:

- Server does not make a reasonable attempt to determine age resulting in serving a minor,
- Knows or should know the consumer is intoxicated,
- Serves a known abuser,
- Vendor forces or coerces the consumption (for example drinking games),
- Or tells the consumer that the beverage contains no or light alcohol (fraud).

For example, a person is over-served and starts a fight and injures another patron, gets in a car and puts it in D instead of R thus crashing into the bar which injures patrons; or someone is served resulting in alcohol poisoning or other personal medical problem; or someone gets in a car accident driving home and injures themselves or a 3rd party; or someone serves a minor on a fake I.D. killed another driver. The Montana Liquor Liability claim results in a \$3,000,000 settlement against the bar.

Kiwanis International would prefer that you serve food and beer or wine like a spaghetti supper with wine or beer & brats tailgate. These would be responsible fund raising events. International would frown on a rock concert or kegger event!

With this new opportunity comes new responsibilities. Bear in mind that bar/tavern owners have many business controls in place for I.D. patrols, providing security, bartender training programs, free taxi ride home programs, etc., to avoid and prevent the occurrence of the Liquor Liability claims. Responsible bar owners do not allow bartenders to drink on the job to ensure their good judgment.

In researching this matter, I spoke to a local lawyer, Department of Revenue / Liquor Control Shelly Chinch, Miles City Beer wholesale, and cleared this with Lisa Hendricks and Kiwanis International.

Prudent Risk Management suggests the club develop a written business plan for new events involving the sale of beer or wine. A "Who, What, When, and Where" analysis including safety precautions, security, and securing cash money. As a District Risk Manager, I am happy to review plans with your club. Feel free to call me or have clubs call me with their questions.

John S. Menyhart, CIC
Risk Manager, Montana District
OFC (406) 234-0280 FAX (406) 234-7107
CELL (406) 951-3509





“I absolutely loved this weekend. It was really inspirational and made me open my eyes.”

I'd like you to consider going to a Key Leader weekend. Our world needs servant leaders and I think you have what it takes to be one. Please visit Key-leader.org to register today! Transportation may be provided.

Sincerely, Betsy Pahut

**July 22-24, 2016 - Hungry Horse MT
Glacier Bible Camp
406-560-5311 or mtkeyleader@yahoo.com**

What is Key Leader?

If you want to take your leadership skills to a whole new level, then this weekend is for you. It's a weekend of growth, leadership, personal development, fun and friends. Key Leader combines hands on learning, group interactions and focused discussions to help you grow as a leader and a person.

Leadership

It's more than a position. It's about the choices you make every day.

Friendship

As you challenge yourself to stretch and grow, you'll learn how to reach out and make deep and lasting connections.

Awareness

How well do you know yourself?
Do you have the courage to pursue excellence in everything you do?

KEY LEADER®
A KEY CLUB WEEKEND LEADERSHIP EXPERIENCE

Key-leader.org/weekends



[/keyleaders](https://www.facebook.com/keyleaders)



[#keyleader](https://twitter.com/keyleader)



[#keyleader](https://www.instagram.com/keyleader)



Carol Clyde

Dr. Carol Clyde joined Cottey College in 2014 and serves as Director of the Serenbetz Institute for Women's Leadership, Social Responsibility, and Global Awareness and an Assistant Professor of Leadership. Carol's abundant career related to community engagement, volunteerism and leadership has included positions at Texas Christian University, Southern Methodist University, Lynn University, Florida Atlantic University and Virginia Wesleyan College. She has a Master of Education degree in Educational Policy Planning and Leadership from The College of William and Mary, a Master of Arts degree in Dispute Resolution from Southern Methodist University and a Doctor of Education degree in Educational Leadership – Higher Education Administration from Florida Atlantic University. She continued her education at Southern Methodist University where she earned a Certificate in Executive Coaching and a Master of Arts in Dispute Resolution.



Carol is an internationally published author on topics related to Experiential Learning, Civic Leadership Development and Holocaust Education. Carol teaches a variety of leadership courses and seminars for undergraduate students and community leaders. Carol is active in a variety of community organizations including Families in Crisis of Vernon (MO) County. She is the former Executive Director of DFW Labrador Retriever Rescue, is a former Board member of the Texas Leadership Forum (a program of the Today Foundation), and is a Past President of The Leadership Consortium of North Texas Colleges and Universities.

Kiwanians, we ask you to print and share with their members, Key Club and Builders Clubs members too - thank you!

This camp truly changes lives and we ask that all clubs support this endeavor by sponsoring students or the bus. We especially need donations to help acquire a bus.

Cost for bus rental to pick up these kids around the state generally runs upwards of \$6000. If you would like to support a student (\$250 for regular/\$225 for Key Club) or make a donation towards the bus, please feel free to mail a check to:

Montana District of Kiwanis
1150 Cobb Hill Rd
Bozeman MT 59718
In re line: Key Leader





Memorial For Past Governor Lauren Damschen

June 25th, 2016

11:00 am

Hope Lutheran Church
1506 W Pennsylvania Ave
Anaconda Montana
Lunch Following

Please RSVP to Roger Baker at mdkroger@bresnan.net or
406-494-7955 to arrange a headcount for lunch.



Paul Harry Grosvold

February 1, 1963 – May 14, 2016

Great Falls Kiwanis and the Montana District of Kiwanis mourn the loss of Kiwanian and Scout leader extraordinaire "Papa Paul." He was amazing. He touched so many lives and set a powerful example. He bravely fought cancer for a year and leaves behind his beloved son, Erik. In lieu of flowers the family requests donations be made to a scholarship fund for Paul's only son, Erik. Donations can be made to The Erik Grosvold Scholarship Fund at Stockman Bank.



PROJECT 48

ONE MEMBER, PER CLUB, PER MONTH
PROJECT480.org

JOIN LOVE
SERVICE THRIVE
VOLUNTEER PROSPER
DEVELOP GROW FLOURISH
CONNECT VOICE INFLUENCE
KIWANIS
GRATITUDE LEAD NETWORK
INNOVATE FUN PARTNER
DONATE BUILD CREATE
SUCCEED HEART
KIND GIVE

Governor Bill is encouraging every club to bring in one new member per month. If this is attained each club will add 12 new members for the year and the district will add 480 new members. This is very workable for all clubs. Please look at adding a new member a month so you have more hands to help with all the great work your clubs perform. We currently have a net gain of 70 members. Let's keep up the great work. More Kiwanians mean more Kiwanis service to the kids. ***Secretaries please remember to clean up your rosters throughout the year and not wait until September.***

CHALLENGING OUR BOUNDARIES OF WHAT KIWANIS WILL BE...

JUNE 18th IN HELENA
or
JULY 23rd IN BILLINGS

Kiwanis Clubs across the District are invited to participate in a half day Regional Training Event ("Event") at either location. Its purpose:

ONE, to provide CLE (Club Leadership Education), whether for incoming officers or refresher training for returning officers;
TWO, to be introduced to some new and exciting membership-strengthening resources, and to meet Kiwanians who are committed to working with Clubs interested in growing **and growing stronger**.

**CLE WILL NOT BE AVAILABLE AT DISTRICT CONVENTION THIS YEAR,
AS "DCON" WILL CONVENE IN MEDICINE HAT, ALBERTA (August 11-14).**

**CLE AND MEMBERSHIP-ENHANCING RESOURCES HAVE BEEN COMBINED THIS YEAR
BECAUSE, REPEATEDLY, THE ISSUES, CONCERNS, AND QUESTIONS ASKED
BY INCOMING/RETURNING OFFICERS AT CLE ARE THOSE
WHICH THESE RESOURCES DIRECTLY ADDRESS.**

Cathy Tutty, the Lt. Gov.-Elect for Division 3 and a District trainer who has provided well-received CLE (and other) training at recent Mid-Winter and District Conventions, will provide this training. Kiwanis International recently asked Cathy to provide similar training at the Toronto Int'l Convention (June 23-26) – which says a lot about the caliber of training being offered in Helena and Billings! Cathy's "signature" training style is often described as being very engaging and interactive. It's much more than content alone (though there is much of that), and it isn't delivered by means of lecture. The strong and plentiful reviews she has received from Montanan Kiwanians participating in past sessions are the best indicator of what Clubs are being offered this summer.

There is no cost for this training.
Training begins at both venues at noon on Saturday, with lunch provided.
The session will adjourn at 4 p.m.

This event takes on added importance for Kiwanians who are both interested in and committed to growing and strengthening their clubs – **because it provides the resources to do both!**

If more information is desired, or if you want to sign-up either as an individual or as a Club, please contact:

Cathy Tutty
tuttyirish@gmail.com
406-498-5411

Chuck Amdahl
chuckamdahl-kiwanis@hotmail.com
406-465-6948

And did you know...

Kiwanis International identifies the Montana District as a pace-setter throughout North America for our recently demonstrated successes in membership.

Thank you for the good and needed service you provide to children and to your communities!
District Formula Co-Chairs

Glen Wheeler and Chuck Amdahl



A Rough Time



Steve Bostrom attends the Helena Kiwanis Club and serves as our District Chaplain. Steve is a descendant of Swedish homesteaders, husband of Via (39 years), father of eight, grandfather of nine, loves Helena and serves as State Minister for his denomination, the Presbyterian Church in America. You can email him at stevebostrom@gmail.com.

It was a rough time. One club member lost his beloved wife. Most of the club came to her funeral. Then another club member nearly died when a freak windstorm capsized his boat. He had on a hat with a light – a hat he'd gotten at a silent Kiwanis auction. Someone saw him waving that hat in the growing dark. That person called 911. Later, just in the nick of time, another club member, our Sheriff, astride a jet ski, pulled him out of the lake. Thank God.

As a pastor I've known rough times too. Twelve years ago, our church family lost a 21-year old soldier to an IED in Iraq. An overflow crowd came to his funeral to support his grieving family.

Afterwards, the father of a young woman – she was a peer of that soldier – came to me. With pain in his eyes he said: "I expect the next funeral to be our daughter's." He feared she would lose the war – with anorexia.

Then, the six-year old daughter of one of our leaders – the youngest of five children – suddenly diagnosed with an inoperable brain tumor – was given less than six months to live.

And then our youth pastor was arrested...

It was a rough time.

That "roughness" is expressed in a 1980 poem, "In This Fog," by Billy Graham's wife, Ruth: "Sunk in this gray / depression / I cannot pray. / How can I give / expression / with no words to say? / This mass of vague / foreboding / of aching care, / love with its / overloading / short-circuits prayer. / Then in this fog of tiredness, / this nothingness, I find / a quiet, certain, knowing / that *He* is kind."

I asked, "God of severity and mercy, what is your purpose in weaving all this together?"

The mother who had lost her soldier son helped with an answer. "When I went to the Christian bookstore, I saw row after row after row of books on Christian Living. I finally had to ask where to find anything about Christian Dying. A very compassionate clerk led me to a miniscule section. We got two books – 25% of what they had."

Scripture

As a church, how could we help those who mourn? I looked at Scripture. The Scriptures tell us the truth about the sorrows we broken people have living in a broken world. No sentimental haze obscures that reality – about two-fifths of the Gospels are devoted to depicting the "passion" (literally, the "suffering") of our Savior. And his passion steps into the lives of his followers – we each "take up our cross daily" (Lk. 9:23).

Although I thought about preaching about our sorrows from Jesus, Paul, David and other Psalmists, I settled on the "weeping prophet," Jeremiah – not his large book – but his book of crafted alphabetical poems – Lamentations. This poignant lament gives words to the horrors of a two-year siege – followed, in 587 B.C., by the Babylonians' near obliteration of Jerusalem. The worst things that could happen in this world happened there.

Why not profit from an entire book the Holy Spirit devoted to grief?! "Laments complain, shout, and protest. In vulnerability and honesty, they cling obstinately to God and demand for God to see, hear, act"

("Lamentations and the Tears of the World," Kathleen O'Connor).

Songs

As I preached from Lamentations, I needed songs. The mother of the soldier told me that coming to church could be difficult – particularly music could be too "happy-clappy."

The Psalter helped. The Psalmist helped us sing: "My God, my God why have you forsaken me?" and "How long, O Lord, how long?"

I found few laments in our contemporary hymnals. Older hymnals – like Gadsby's – first published in 1814 – had some. #307 by Hart gives us these words to sing:

"And must it, LORD, be so? / And must Your children bear / Such various kinds of woe, / Such soul-perplexing fear? / Are these the blessings we expect? / Is this the lot of God's elect? / Howe'er grievous the way, / Dear Savior, still lead on, / Nor leave us 'til we say, / 'Father, Your will be done.' / At most we do but taste the cup / For You alone did drink it up."

Creeds – and our Historic Community of Faith

Of course, we needed to keep coming back to Jesus. Reading the creeds together gave us another way to get to him. Heidelberg 1: "Question. What is your only comfort in life and in death? Answer. That I am not my own, but belong—body and soul, in life and in death—to my faithful Savior, Jesus Christ. He has fully paid for all my sins with his precious blood, and has set me free from the tyranny of the devil. He also watches over me in such a way that not a hair can fall from my head without the will of my Father in heaven; in fact, all things must work together for my salvation. Because I belong to him, Christ, by his Holy Spirit, assures me of eternal life and makes me wholeheartedly willing and ready from now on to live for him."

It was during that "rough time," I learned these profound words were written in 1576 by Dutch men in their early forties. To be alive at forty meant they had avoided decimating plagues and war. Spain waged war against Holland's Protestants off and on for 82 years, 1566-1648. Such was the setting for the Heidelberg Catechism. Let's listen to our tested Christian forbearers.

What about Montana – and Us?

What about Montana? Perhaps you've heard that our state is so patriotic that during WW I and WW II a great many of our men went to war. Compared to other states, a disproportionate number did not come home. And that has brought sustained economic implications – and other challenges too. On average, we still send more military away than other states – about one in ten. Montana has it's own Lamentations.

In your rough times, so do you.

Do you have a Savior who knows your suffering? Does he help you bear your cross? Do you have a church family that points you to Jesus as they help you bear your burdens? Look in the Scripture; look for songs for your soul; look in the creeds; look for a community of faith. And pray. Ask God to give substantial answers to deep questions your soul asks during a rough time.



JOINT WESTERN CANADA / MONTANA DISTRICT CONVENTION



A Sunshine State of Mind Under the Big Sky.

- Share, Learn and Grow by attending workshop sessions (Formula, I-Plan, Communication, Social Media, Fundraising);
- Enjoy fun and fellowship - reconnect with old friends and make new friends;
- Recharge your batteries and re-energize by seeing the impact Kiwanis has in communities - actually making a difference;
- Celebrate Club success and achievement;
- Get ready to experience Medicine Hat!

Kiwanis Western Canada District and the host club of Medicine Hat are excited to invite you to the Joint Montana / Western Canada District Convention. This will mark the 7th time that our two great districts have gathered together to share, learn, grow together and enjoy Kiwanis fellowship.

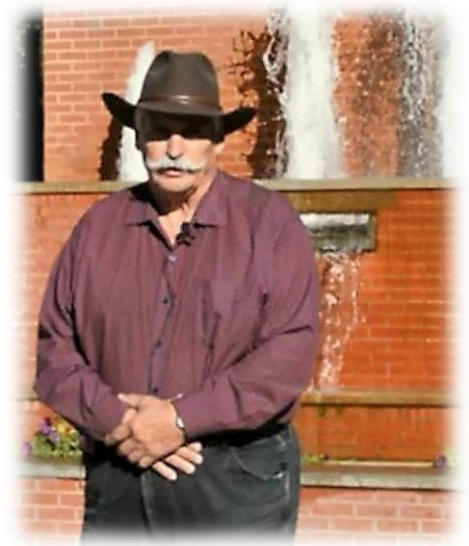
I invite you to join us in Medicine Hat, August 11th to 14th to be part of this great event!

Bill Grady

WCA District Governor Elect 2015 / 2016 - Convention Co-Chair

Sandy Seifert

Convention Co-Chair



Quick Link Buttons

[Click To Register](#)

[Directions](#)

[Convention Agenda](#)

[Companions Program](#)

[10 Reasons to Attend](#)

[Contact Information](#)



JOINT WESTERN CANADA / MONTANA DISTRICT CONVENTION

Line-Up of Speakers and Workshop



Formula for Membership Growth

Join Kiwanis International's Regional Development Manager Roy Hedeem sharing the secrets to growing your club and adding energy to your club. More members make for more service!

I Plan for the Future

Learn more about the I-Plan Framework. Board members participate in a strategic planning workshop entitled "I - Plan" named for the four "I" themes (Inspiration, Impact, Image and Investment) that districts and clubs should consider as they plan for their future.

Thinking Out Loud ! Planning for the Future !

Patty Schachter from [P Schachter & Associates](#) - Your Strategic Thinking Partners leads a strategic planning workshop to brainstorm challenges and issues in strategic planning. In an interactive workshop, participants will identify potential solutions and approaches, as clubs utilize the Kiwanis "I-Plan" framework.

Communications in the 21st Century

Sharing the Kiwanis message of service is a challenge. Will we continue to be "the best kept secret"? Join WCD Communications Chair, (the Doctor) Roland Sabourin in an interactive session including branding, social media, and external media. Get hands-on support!

Eliminate Project Update

Although Kiwanis have met the \$110 Million Dollar fundraising pledge the work continues in the field to Eliminate MNT. Get the update on fundraising efforts and the next phase of eradicating MNT from UNICEF Canada's Francis Graham.

Ten Reasons To Attend

1. Celebrate Success
2. Reconnect with Friends and make New Friends
3. Share Ideas
4. Learn and Grow
5. Develop Personal Skills
6. Elect District Leadership and Influence the Future
7. Recharge Your Batteries
8. Be Part Of History
9. Have Fun
10. Pick Your Favorite Reason!



Service Leadership Program Updates

Changes and updates from CKI, Key Club and Aktion Club Advisers. If youth are the future of our organization, understand what your club needs to do to sponsor an SLP and appreciate the benefits.

Companion's Program

Companions can enjoy the sites, sounds and shopping of Medicine Hat while the "other half" attends the convention. The Pioneer Village hosts the Friday evening fellowship dinner.

Entertainment

[Meaghan Reist](#) and Nolan headline at the Governor's Banquet on Saturday evening. Meaghan Reist's music is storytelling through songwriting. Her intent is to open hearts, spark consideration, and sing truth about things that matter.

Socialize

- Test your knowledge of Kiwanis Trivia with former Kiwanis International trustee Roy Bird. Guaranteed to tickle your funny bone and stretch your memory!
- Donate some new or "slightly used" treasures and then take home some new treasures from the Silent Auction.
- Join the Governor's Hospitality suite to meet and mingle with your old friends and meet Kiwanians from Montana
- The Convention Service Project will be supporting "Teddy Bears" for patients program at the regional hospital. Bring a 6-12 inch teddy bear or plush toy to the Medicine Hat convention!



SEE YOU IN TORONTO



2016
TO
RON
TO

Canadian culture. International influence. That's Toronto. And that's where we'll be in 2016. Join us for next year's convention—in a city that blends traditions and passions from more than 100 cultures. It's the perfect place to celebrate 100 years of Kiwanis in Canada!

**101st Annual Kiwanis International Convention,
Toronto, June 23–26, 2016**



WELCOME TO TORONTO

Toronto is Canada's largest city and one of North America's most vibrant destinations for leisure and business travellers. Situated on Lake Ontario, Toronto is one of the southernmost cities in Canada and has nearly the same latitude as northern California and Cannes, France. Toronto and the surrounding areas are home to more than 5.5 million people. Toronto is the cultural, entertainment, and financial capital of Canada.



Travel Document Requirements for Entry into Canada

Visitors must have valid travel documents to enter Canada. Document requirements vary depending on which country you are travelling from. For specific information on travel documents and to find out if you require a visa to enter Canada as a visitor, please refer to cbsa.gc.ca and cic.gc.ca.

! **Canadian entry requirements are changing** As of March 15, 2016, **Electronic Travel Authorization (eTA)** will become mandatory for visa-exempt foreign nationals travelling to Canada by air (not by land or sea.) The authorization is electronically linked to your passport, so no additional documents are necessary. It is valid for five years or until your passport expires, whichever comes first. To avoid any issues at the airport, you should get your eTA as soon as you begin planning your trip to Canada. **US citizens** do not need an eTA; however, proper identification must be presented at the border. To find out if you need an eTA or to apply online, visit Canada.ca/eTA

Languages Spoken

The two official languages of Canada are English and French. In addition to these, the top five languages spoken in Greater Toronto are Italian, Chinese, Cantonese, Punjabi and Tagalog. More than 100 languages are spoken in the Greater Toronto Area.

Toronto is Accessible


Toronto is an international gateway and major North American hub.

Pearson International Airport is centrally located with over 65 airlines offering more than 1,100 international and domestic daily flight arrivals and departures.

Billy Bishop Toronto City Airport, located minutes from the downtown core, is served by both Porter Airlines and Air Canada with air connections to regional Canadian and U.S. destinations.

Climate/Clothing

Toronto celebrates four seasons. Here are the average temperatures you can expect for our city:

	Average °C	High °C	Low °C
January	-3	0	-6
February	-5	-1	-5
March	0	4	-4
April	6	12	1
May	12	18	6
June	17	24	11
July	21	27	14
August	20	26	13
September	15	21	9
October	9	14	4
November	3	7	0
December	-3	0	-6



What to Pack?

Summer: Light cottons, sun hats and shorts are great for the sunny, hot weather typical of summer in Toronto.

Spring/Fall: Layers work best as the temperature goes from warm to cool from day to evening. Bring a light jacket and a sweater or two.

Winter: Bundle up with a warm coat, hat, scarf, gloves and lined boots.





Currency, Taxes & Tipping

The currency is the Canadian dollar. For denominations under five dollars, Canadians use coins, including what are affectionately known as the “Loonie” (one-dollar coin) and “Toonie” (two-dollar coin). Daily currency exchange rates appear in newspapers and online, and are posted at banks throughout the city.

The Harmonized Sales Tax (HST) is a 13% tax that is applied to most purchases of taxable supplies of goods and services in the Province of Ontario.

If you're happy with the service you receive, a 15-20% tip on the pre-tax bill is a standard expression of appreciation.



Medical & Health Insurance

Even a minor illness or injury while on a trip can cause a great inconvenience. It is recommended that all travellers check their medical and accident insurance before leaving to ensure they are up to date.



Mobile Roaming & Pre-Planning

If you plan to use your phone frequently while you're travelling abroad, you may want to consider options that keep costs at bay. **Check with your service provider for travel packs.** Look for free Wi-Fi hotspots to reduce your data usage while travelling. Another option to consider is mobile rentals.



Getting Around

Public Transit

Travel throughout the city like a local on the TTC! The Toronto Transit Commission (TTC) is the quick and convenient way to get around Toronto. The subway system links with buses and streetcars. You can freely transfer between subway/RT, streetcar and bus, but make sure you obtain a transfer (a slip of paper) when and where you pay your fare.

Taxis

There are a number of different taxi companies in Toronto to get you around town. Keep in mind that fares are standard, metered and non-negotiable. Take note of the Passengers Bill of Rights posted on the back of the driver's seat. The driver should start the meter at the beginning of your ride and stop it when you reach your destination. Refuse to ride in a taxi without an operational meter.

UP Express

The UP Express makes getting between Union Station and Pearson International Airport easier and faster. Trains depart every 15 minutes and it only takes 25 minutes!



Check fares and schedules and buy tickets online at upexpress.com.



July 13-16, 2017

Kiwanis International 2017 Convention

Montana and Western Canada Tour and Cruise



Past International President and Past Montana District Governor Dave Curry is putting together a cruise before the 2017 Kiwanis International Convention in Paris, France for both the Montana and Western Canada districts. Tentative options include:

- ✦ a couple of days in Venice,
- ✦ Italy before the cruise,
- ✦ a cruise docks in Dubrovnick, Croatia which is a medieval down in the Dinaric Alps,
- ✦ docking in Ephesus (Kusadasi), Turkey which was a capital of Imperial Rome with Venetian, Byzantine, and Ottoman influences,
- ✦ tender in Santorini, Greece for a romantic setting of volcanic beauty, high cliffs, red and black sand beaches, and white-washed towns,
- ✦ dock in Katakolon, Greece to feel the Olympic spirit where the ancient games were held for centuries,
- ✦ flying to Prague after the cruise,
- ✦ and then to Paris.

From Paris we can take a day trip to Normandy and Dave Curry is also exploring Lourdes.

The Mediterranean Cruise itself would start July 1, 2017. If you would like to book the cruise, Dave Curry would need a \$500 deposit. The nice thing about booking earlier is that sometimes you get upgraded to nicer cabins. This has happened to me on more than one occasion.

The package before the cruise and following the cruise, and airfare cannot be quoted until it is a year out. Dave Curry is working on this and hopes to have it before the district convention in August.

If you would like further information, please call Dave Curry at 406-723-8067 or you can email him at dacurry07@gmail.com. Please forward to whoever you think might be interested.



DIVISION 4

Hardin Kiwanis

Kids Day Parade

Hardin Kiwanis had entrants in the 2015 Kids Day parade. The Hardin club organizes a parade for kids during Little Big Horn Days. They offer four \$100 prizes for best animal, best mobile, best individual and best group. Each entrant also receives a free movie ticket.

Hugh O'Brien Leadership Camp

Hardin Kiwanis sponsored two students to attend the Hugh O'Brien Leadership Camp in Missoula.

Beer and Wine Tasting

Hardin Kiwanis held a beer and wine tasting social for prospective members, officers, and combined it with a silent auction. They raised over \$2200 for our youth projects



Heights Kiwanis of Billings

The hard working group of Heights Kiwanis served hamburgers, hot dogs, and hot chocolate at Special Olympics



Heights Kiwanis of Billings

Bootlegger's Ball

Billings Kiwanis held a speakeasy night of dinner, auction, games, poker and dancing to raise funds for Landon's Legacy Miracle League Park. See more photos of this success story here: [!\[\]\(19d44b37fb4fa155bf9d60c77a3d3cb2_img.jpg\)](#)

Billings Bike Rodeo

Local bike shops accepted slightly used bicycles that were repaired, tuned, and given to a child free of charge. Fifty bikes were fitted to fifty children.

Movies In The Parks

The 2016 season of Billings Kiwanis Movies in the parks is set to begin. This community outreach is done in conjunction with Firefly Movie Company and Billings Park in Rec and sponsored by Singh Contracting, Brewer Pediatric and Orthodontic Dental Center and Midland Empire Chapter of Credit Unions.



DIVISION 6

Headwaters Kiwanis

Headwaters Kiwanis held their annual fun run supporting Three Forks summer recreation programs.



Harlowton Kiwanis

Annual Kiwanis Show

Harlowton Kiwanis held their annual Kiwanis Show. To see the photos from this wonderful night of fun and fellowship, click here: [▶](#)

Kiwanis Scholarship Winners

Congratulations to the Harlowton Kiwanis Scholarship Winners, Jesse Tudor and Rachel Hiner. We wish you both the best!"

Student Of The Month

Each month Harlowton hosts a "Student of the Month." May's student is Cody Nelson who is a "Step Above The Rest!"

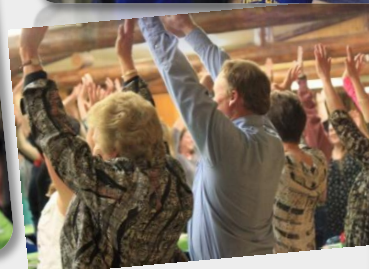
59th Annual Scholarship Banquet

Harlowton Kiwanis held it's 59th Annual Scholarship Banquet which recognizes students in Harlowtown High School who achieve a 3.5 GPA each of the last three quarters.



Belgrade Kiwanis

The Belgrade Kiwanis 7th Annual Scholarship Golf Scramble with a Twist was a huge success. The 9-hole course hosted 18 teams. One \$1000 scholarship and two \$750 scholarships were awarded to graduating Belgrade High Students.



**Thank You To Those That Attended The
Bootlegger's Ball
To Support Landon's legacy Miracle League Park**



ANNUAL HARLOWTON KIWANIS SHOW



DIVISION 7

Malta Kiwanis

Pancake Breakfast

Malta Kiwanis and Key Club worked together cleaning several miles of Highway 2, both sides!!

Birthday Bag Head Start

Malta continued our Birthday Bag project enabling each Head Start student to celebrate their big day. Malta continues collecting aluminum pull tabs with the elementary students.

Malta Car Show

Malta is now preparing their famous French fries and burgers for the Malta Car Show on June 4 from 10 am to 2 pm. The downtown streets of Malta are closed off, and this year it is also a multi-year Class Reunion. All are welcome.

The club meets the first and third Tuesday evenings at 6 pm at the West Side Cafe. Come visit!

Glasgow Kiwanis

Bring Up Grades

Third quarter BUG certificates were presented to the 4th and 5th graders at Irle School May 11 along with coupons for Flip Burgers. The 6th grade BUG winners for both quarters will be treated to an ice cream social May 27 at the Eastside Middle School.

Red Cross Blood Draw

The Glasgow Kiwanis club provide snacks for the participants of the Red Cross Blood Drawings.

Boy Scouts

The Glasgow Kiwanis club has sponsored Boy Scouts since 1976, celebrating 40 years. The Montana Kiwanis Foundation and the Glasgow Kiwanis Club helped with the replacement of OLD water heaters at the Scout Park near Fort Peck, with energy efficient models. The park (leased from the Corps of Engineers) serves many groups including 4-H, Church youth groups, family reunions, Boy Scout, Girl Scout and Cub Scout activities.

Children's Museum

The Glasgow Kiwanis club cleaned the wildlife exhibit at the children's museum. Lt. Governor Charles Wilson even put his dentistry skills to use on an alligator!



Havre Kiwanis

The Havre Kiwanis Club has been awarded a \$2000 matching grant from the Sleeter Fund, and the \$4000 will be used to refinish the interior of four cabins at Camp Kiwanis south of Havre in Beaver Creek State park. In the past the Havre Kiwanis Club has helped them with replacing windows, replacing door with handicapped doors, and sidewalks.

DIVISION 3

Dillon Kiwanis

For Kiwanis One Day, Dillon Kiwanis conducted a general cleanup of Kiwanis Park. They dismantled and stored remaining Christmas decorations and they cleaned the park.

Sunrise Kiwanis Of Butte

East High Leaders Of Lunch Builders Club

The Sunrise Kiwanis Builders Club prepared cookies bags for Teacher Appreciation Day and held their end of the year pizza party.

Bring Up Grades

Sunrise held the first in their rounds of the BUG assemblies for West Elementary, Butte Central, and Hillcrest Hornets.



Silver Bow Kiwanis Of Butte


Butte Central Builders Club

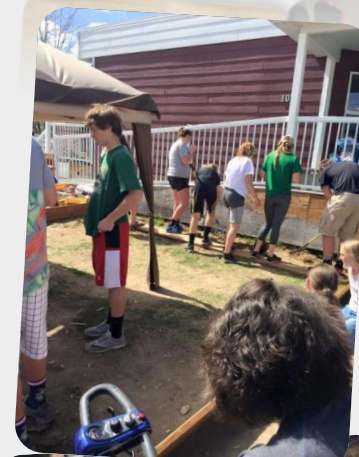
Butte Central Builder's Club built a huge sandbox at Noah's Ark Daycare. What an amazing team of kids!

Pints For Playgrounds

In support of their continuing playground project, Silver Bow Kiwanis held a Pints for Playgrounds event raising \$175 in donations at the Butte Brewing Company.

Butte Central Key Club

Just for fun, we thought we'd share the "talent" competition video of the boys in the Butte Central Key Club. Click the arrow to brighten your day. 



DIVISION 6

Bozeman Kiwanis

The Bozeman Kiwanis celebrated Kiwanis One day on May 21 by helping the Bozeman Community build a new North Fort Playground at Longfellow School. In addition to manpower, President Paul presented checks totaling \$3,500 towards the project (\$2,000 from the Bozeman Kiwanis and \$1,500 from the Montana District Foundation). The fort/playground is anticipated to serve 10,000 children over the next 30 years.

The Bozeman Kiwanis Club is ramping up to provide 100 children's sandboxes built by club members, given to families free of charge, sand included!



DIVISION 9

Boulder Kiwanis

The Boulder Kiwanis club held a super adorable Easter egg hunt and had a homemade pie membership drive social. That's right Boulder Kiwanis had THE EASTER BUNNY and HOMEMADE PIE! Seriously Awesome!

Capital City Kiwanis of Helena

Capital City Kiwanis of Helena stored food for the Stamp Out Hunger postal food drive at the Kmart parking lot! It's was incredibly fun! They also happen to have the newest member of our Montana Kiwanis family!



DIVISION 1

Salmon Kiwanis of Idaho

Teacher Appreciation

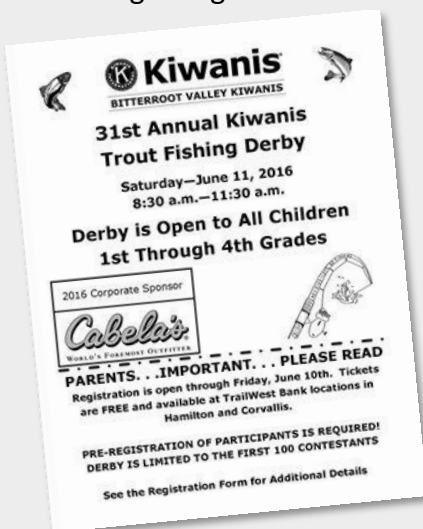
Salmon Kiwanis served coffee cookies juice and fruit to Teachers at Salmon High School. Thank you to our teachers.



Bitterroot Valley Kiwanis

Fishing Derby

SAVE THE DATE! Bitterroot Valley Kiwanis will host its 31st Annual Kiwanis Trout Fishing Derby on Saturday, June 11th from 8:00 am to 11:30 am for 1st through 4th graders.



Sentinel Kiwanis of Missoula

55th Birthday

Missoula Sentinel partied, worked, and honored 55 years of serving the community before 7:30 am.

Air Tanker Tour

Sentinel Kiwanis took a tour of the Neptune Aviation and the next-gen Air Tanker, the BAe-146.

Lyle R. Heath Service Award

It is with great pleasure that Sentinel Kiwanis announces the recipients of the Lyle R. Heath Community Service Awards for 2016. The adult award was presented to David Watt. The youth award was presented to Jessica Beers.

Special Olympics Area Games

Many members of the Sentinel Kiwanis volunteered in all areas where needed for the Special Olympics Area Games.

Krispy Kreme Delivery

The Sentinel Kiwanis club Krispy Kreme delivery continues to support Kiwanis Kids.

Clark Fork River Clean Up

A small and mighty Sentinel Kiwanis crew cleaned up unique garbage at the Clark Fork river clean up.

Garden City Brewfest

Sentinel Kiwanis held a successful fundraising day at the Garden City Brewfest.

Key Club Scholarships

Sentinel Kiwanis gave our three scholarships to their sponsored Key Clubs: Loyola Sacred Heart, Hellgate High School, and Florence-Carlton High School.



DIVISION 1

Missoula Kiwanis

Pancake Breakfast

Thank you for coming out to support kids everywhere by making, serving, and eating pancakes, sausage, apple sauce, juice, coffee, and milk.

72nd Annual Basketball Banquet

Missoula Kiwanis held the 72nd annual basketball banquet on April 19th. This program had 198 students from 11 schools who were organized into 22 teams.

Student Of The Month

March's Student of the Month was Cole Amish.

Reserve Street Clean-Up

As part of Kiwanis One Day, twelve volunteers from all the K-Family cleaned up trash along Reserve Street on a cloudy Saturday morning.



DIVISION 2

Shelby Kiwanis

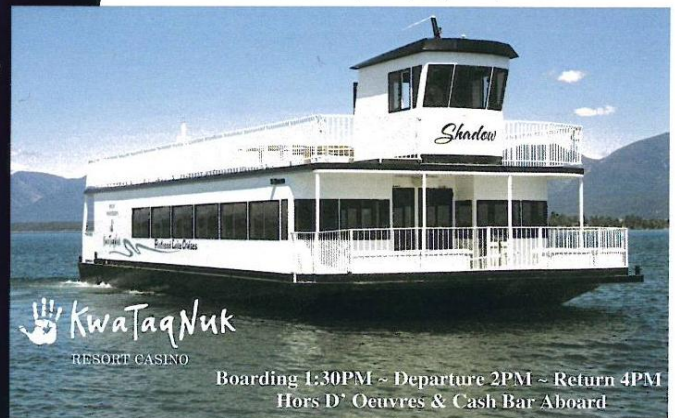
Shelby KITE Festival

First Annual Kiwanis Shelby Kite Festival was a success! They had great music and good food. The weather didn't stop all from having a good time! Can't wait to see you next year!



The Kiwanis Club's Private Flathead Lake Cruise

Join the Kiwanis Club aboard
KwaTaqNuk Resort Casino's lake cruiser,
The Shadow, on July 10, 2016!



Boarding 1:30PM ~ Departure 2PM ~ Return 4PM
Hors D' Oeuvres & Cash Bar Aboard

\$30 Adults ~ \$20 Children Under 10

RSVP by June 24, 2016 to bamonaco77@gmail.com

DIVISION 5

Sidney, Glendive, Miles City, Billings Golden K Intra and Inter Club Meeting

Intra and Inter Division Meeting

It was a great day. Four clubs, Billings Golden K, Miles City, Glendive, and Sidney had a intra and inter club meeting. Two members of Key Club, Governor Bill Jones, Lt. Gov Chuck Rushing, and Gov. Elect Bob Keene were in attendance. It may not be a record but approx 3,140 total people miles were traveled.



Miles City Kiwanis

Softball Concessions

Miles City Kiwanians faithfully run the concessions at the softball field.

Rural Track Meet & Spelling Bee

Performing all kinds of volunteer duties, Miles City Kiwanians help with the running of the track meeting and spelling bee each year.

Bucking Horse Sale BBQ

In one of the biggest events for Miles City each year, Miles City Kiwanians run the BBQ after the Bucking Horse Sale and Parade.



Glendive Kiwanis

Uganda Tender Mercies Orphanage - AIDSpiritUSA

You can follow Karen and Chuck's trip to Uganda to support and service the Uganda Tender Mercies Orphanage. You can follow their trip at www.AidSpirit.org.



DIVISION 2

Great Falls Kiwanis

Monthly Socials

Great Falls is hosting monthly evening events for members and/or potential members who cannot make our weekly Tuesday meetings.



KIWANIS FOUNDATION OF MONTANA

Outreach Giving of Montana District of Kiwanis

October 1, 2015 through **May 15, 2016**

Outreach is the "fund raising" program that allows the Kiwanis Foundation of Montana to give financial support to our district youth and helps the foundation provide scholarships to high school and college students. This year 17 \$1000 scholarships were awarded to students by the foundation. So far this Kiwanis year, 65% of the 41 clubs have contributed to the youth financially by giving to outreach. Many thanks to those clubs! That means, of course that 35% have not yet given. I attach the latest report so you can each see if your clubs are on this short list and decide if you wish to encourage them to give to our district youth. There is still time.

		KEY CLUB	CIRCLE K	BLDERS CLUB	KEY LDR	SPON'D YOUTH	ADMIN ENDOW
Division One							
Hamilton Bitterroc	\$	508.00	\$ 100.00	\$ 100.00	\$ 25.00	\$ 215.00	\$ 43.00
Missoula	\$	802.00	\$ 100.00	\$ 100.00	\$ 25.00	\$ 460.00	\$ 92.00
Missoula Sentinel	\$	694.00	\$ 100.00	\$ 100.00	\$ 25.00	\$ 370.00	\$ 74.00
Grant Creek	\$	150.00	\$ 50.00	\$ 50.00	\$ 25.00	\$ -	\$ -
Division Two							
Great Falls	\$	376.00	\$ 100.00	\$ 100.00	\$ 25.00	\$ 105.00	\$ 21.00
Shelby	\$	-					
Division Three							
Anaconda	\$	-					
Butte Silver Bow	\$	520.00	\$ 100.00	\$ 100.00	\$ 25.00	\$ 225.00	\$ 45.00
Butte Sunrise	\$	418.00	\$ 100.00	\$ 100.00	\$ 25.00	\$ 140.00	\$ 28.00
Dillon	\$	454.00	\$ 100.00	\$ 100.00	\$ 25.00	\$ 170.00	\$ 34.00
Division Four							
Billings Golden K	\$	652.00	\$ 100.00	\$ 100.00	\$ 25.00	\$ 335.00	\$ 67.00
Billings Heights	\$	466.00	\$ 100.00	\$ 100.00	\$ 25.00	\$ 180.00	\$ 36.00
Billings Yellowstone							
Division Five							
Glendive	\$	250.00	\$ 100.00	\$ 100.00	\$ 25.00	\$ 25.00	
Miles City	\$	550.00	\$ 100.00	\$ 100.00	\$ 25.00	\$ 250.00	\$ 50.00
Sidney	\$	543.00	\$ 100.00	\$ 100.00	\$ 25.00	\$ 265.00	\$ 53.00
Division Six							
Belgrade	\$	-					
Bozeman	\$	604.00	\$ 100.00	\$ 100.00	\$ 25.00	\$ 295.00	\$ 59.00
Harlowton	\$	157.00	\$ 100.00		\$ 25.00		\$ 32.00
Tombstone	\$	321.00	\$ 100.00	\$ 75.00	\$ 25.00	\$ 80.00	\$ 16.00
Division Seven							
Glasgow	\$	150.00	\$ 100.00				\$ 50.00
Havre	\$	228.00	\$ 100.00		\$ 25.00	\$ 65.00	\$ 13.00
Malta	\$	352.00	\$ 100.00	\$ 100.00	\$ 25.00	\$ 85.00	\$ 17.00
Division Eight							
Columbia Falls	\$	280.00	\$ 100.00	\$ 100.00	\$ 25.00	\$ 25.00	\$ 5.00
Kalispell	\$	350.00	\$ 100.00	\$ 100.00	\$ 25.00	\$ 50.00	\$ 50.00
Kalispell Glacier	\$	-					
Polson	\$	388.00	\$ 100.00	\$ 100.00	\$ 25.00	\$ 115.00	\$ 23.00
Division Nine							
Helena	\$	850.00	\$ 100.00	\$ 100.00	\$ 25.00	\$ 430.00	\$ 170.00
Total Received							
	\$	10,063.00	\$2,250.00	\$1,925.00	\$550.00	\$ 500.00	\$ 3,860.00
Paid Out 3/1/2016			\$2,000.00	\$1,675.00	\$475.00	\$ 425.00	
Paid Out 3/31/2016			\$150.00	\$150.00	\$ 50.00	\$ 50.00	

KIWANIS INTERNATIONAL POLICY C - GENERAL

6. Alcohol Guidelines

Alcohol may be served or consumed at Kiwanis events in a legal and responsible manner, provided such serving or consumption is done in accordance with the customs and applicable laws where the club or other Kiwanis entity is located. (10/83) (1/13)

Because the presence of alcohol at a function greatly increases the risk of personal injury, Kiwanis clubs and other Kiwanis entities must be conscious of liability exposure whenever alcohol is offered. All Kiwanis entities should adhere to the alcohol guidelines established by Kiwanis International when providing alcohol at an event; see Procedure 173 – Alcohol Guidelines for Kiwanis Clubs and Other Kiwanis Entities. (10/83) (1/13)

KIWANIS INTERNATIONAL PROCEDURE 173 – ALCOHOL GUIDELINES FOR KIWANIS CLUBS AND OTHER KIWANIS ENTITIES

When providing alcohol at a Kiwanis event, Kiwanis clubs and other Kiwanis entities should adhere to the following guidelines. (1/13)

The preferred method is to transfer the risk by hiring a licensed entity to provide the alcohol. A certificate should be requested from the entity naming your club and Kiwanis International as an additional insured on its alcohol liability policy. When it is not possible or practical to hire a professional entity, the following steps should be taken to reduce the chance of an occurrence:

- Prevent underage service; check identification on all patrons 40 and younger. (1/13)
- Alcohol consumption must remain on the premises, with prominently displayed signs that inform attendees of this requirement.
- Entrance to the facility or event must be staffed by club members.
- Control consumption and avoid over-serving.
- Food should be readily available at the event.
- Minors at event limited to areas without alcohol.
- Enlist volunteer support in watching over the grounds.
- Consider the presence of local police.
- Be sure to check with the local municipality, state or province whether a license is required for your event. If a license is required and one is not obtained, there will be no coverage for an injury attributable to alcohol. Coverage will not be provided without a valid license.

(1/13)

The Kiwanis alcohol liability insurance coverage offered to clubs in the U.S., Canada, and the Caribbean is intended to protect the majority of those clubs that sell alcohol at an event under the following circumstances: (1/13)

- There are up to 500 participants at the event.
- The event is a one-day event.
- Alcohol receipts are less than 50 percent of the total receipts.

(1/13)

Clubs that conduct events that are outside of the above circumstances are requested to purchase primary alcohol liability for the event, with limits of at least US\$1,000,000 per occurrence. The Kiwanis insurance policy would be in excess of the event coverage. (1/13)

Coverage under Kiwanis International's alcohol liability insurance is intended to protect Kiwanis from third-party liability. No coverage is provided to club members, volunteers, or employees for their injury. (1/13)



Montana Application for Special Permit to Sell Beer and Table Wine

*A copy of your IRS tax- exempt certificate must be attached or on file with the department.
Please send your complete application and the appropriate fee to us at least (3) three days before your event.*

Section 1 – General Information

Note: If the name of the applicant is an individual, list the individual's name below. If the name of the applicant is a partnership, limited liability partnership (LLP), corporation, or limited liability corporation (LLC) list the business' name below.

Name of Applicant(s): _____ FEIN/SSN: _____

Contact Person: _____

Telephone: _____ Fax: _____

Where is your principal place of business? _____
(Street Address, City, State Zip Code)

Name of Event: _____

Location of Event: _____
(Street Address, City, State Zip Code)

Date(s) for which special permit is desired: _____

Section 2 - Type of Organization and Fees

Type of Organization: _____

- ➔ \$10 per day - 501(c) (3) Organization (limit 3 per year)
\$10 per day - 501(c) (3) Intercollegiate athletic fund-raising organization (limit 12 per year)
\$10 per day - 501(c) (4) Civic League or Organization (limit 12 per year)
\$10 per day - 501(c) (6) Chamber of Commerce or business league (limit 12 per year) *
\$10 per day - Accredited Montana post secondary school (limit 3 per year)
\$10 per day - Organization operated to raise funds for a needy person
\$10 per day - Veterans or fraternal organizations that hold a liquor license (limit 3 per year)
\$1,000 per season - Professional Sports Organization (seasonal)
\$1,000 per season - Junior Hockey Team (seasonal)
* Chamber of Commerce or business league need to provide proof of liquor liability insurance.

\$ _____ Total Amount Enclosed

Office Use Only - Acct No: _____

Amount Paid: \$ _____ Amount Owed: \$ _____

Tax-Exempt Certificate Yes _____ No _____

Permit Number: _____

No. of Permits: _____ of _____

Section 3 – Local Law Enforcement

Please have your local law enforcement official complete this section prior to sending in your application.

I, _____, hereby ☐ **Approve** ☐ **Disapprove**
of the above event.

Signature

Title

Date

Section 4 - Declaration and Affidavit

We understand beer and table wine can only be sold and consumed within the enclosure where the event is held and only on the above date(s). We state that the location of the event is not within 600 feet and on the same street as a school or church.

We will follow all the laws, rules and ordinances relating to the sale of beer and table wine. We understand that a violation of any law or rule relating to the sale of beer or table wine will be reason to revoke the permit. Any authorized employee of the department, its representative or any peace officer will have the right to examine the location of the event at any time.

This application needs to be signed by all individuals, partners or members. In the case of a corporate applicant, it may be signed by one shareholder or officer with authority to sign.

I/We declare under penalty of false swearing that the information provided on this application and its attachments are true, correct, and complete.

Signature

Date

Printed Name

Title

Signature

Date

Printed Name

Title

Mail completed application as well as all necessary documents to:

Montana Department of Revenue

Liquor Control Division

PO Box 1712

Helena, MT 59624-1712

Questions? Contact us at:

Phone: Toll Free at 1-866-859-2254 (in Helena, 444-6900)

Fax: (406) 444-0722