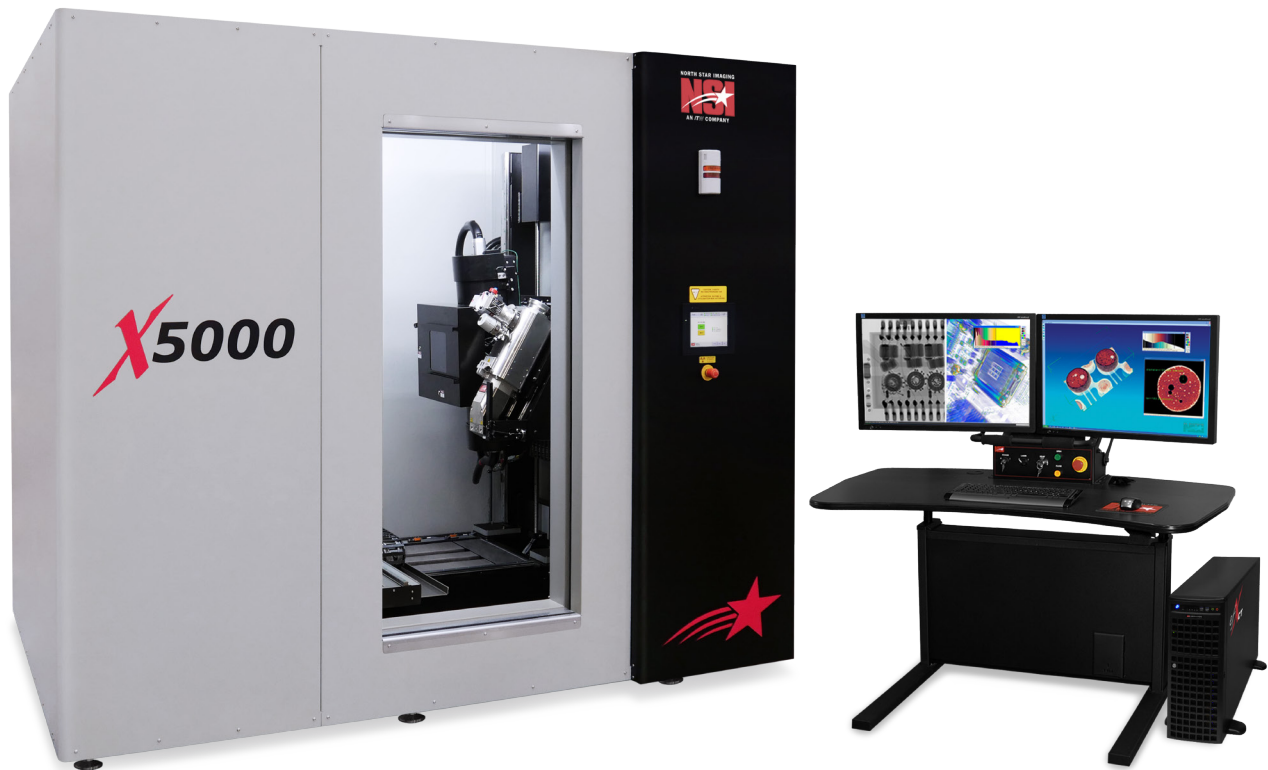


# X5000<sup>®</sup>

Universal & Flexible



2D Digital Radiography & 3D Computed Tomography

**450 kV**

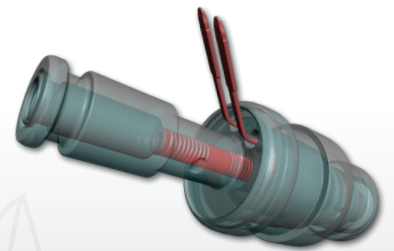
max X-ray Energy

**>3000X**

Geometric Mag

**32 in x 48 in**

[81 cm x 121 cm] nominal part envelope



# Flexibility to Choose

North Star Imaging's team of experts will help you select the best combination of X-ray source and X-ray detector for your application. The system boasts a large scanning envelope and excellent ergonomics for loading sizable objects while still maintaining the sensitivity to inspect even the smallest of items.

## System Capabilities

Geometric Magnification	>3000x
Overall Maximum System Resolution	~500 nm

## X-Ray Source

Voltage Range	10 kV to 450 kV
Minimum Focal Spot Size	~500 nm
X-Ray Tube Types	Nano-focus Micro-focus Mini-focus
Dual Tube Configuration	Optional

## X-Ray Detector

Detector Types	Flat Panel (DDA) Linear Diode Array (LDA)
Grade Options	Standard Premium ASTM
Maximum Detector Size	16 in x 16 in [40 cm x 40 cm]
Dual Detector Configuration	Optional

## Manipulator

Maximum Sample Weight	500 lb [227 kg]
Axis Travel	Vertical: 48 in [121 cm] Horizontal: 32 in [81 cm] Tilt: +20° / -20° Rotation: 360° Continuous
Nominal Part Envelope	Diameter: 32 in [81 cm] Height: 48 in [121 cm]

## Virtual Detector Dimensions Using a 16 in x 16 in [41 cm x 41 cm] Detector

	Standard	w/ vorteX	w/mosaiX
Diameter	~16 in [40 cm]	~16 in [41 cm]	~39 in [100 cm]
Height	~16 in [40 cm]	~57 in [145 cm]	~57 in [145 cm]

## Cabinet

	240 kV	450 kV
Width	107 in [271 cm]	107 in [271 cm]
Depth	80 in [203 cm]	80 in [203 cm]
Height	92 in [233 cm]	92 in [233 cm]
Weight	14800 lb [6170 kg]	29000 lb [13200 kg]

All cabinets are steel/lead/steel construction that meet or exceed 21 CFR 1020.40 and EN 61010-2-091 2012.

Exact specifications vary depending on tube, detector, and other optional configurations

## Contact us for a consultation and quote for your project:

North Star Imaging Minnesota

PHONE: (763) 463-5650

TOLL FREE: 1-800-635-8392

EMAIL: sales@4nsi.com

4nsi.com

North Star Imaging California

PHONE: (949) 346-1299

EMAIL: scanning.ca@4nsi.com

4nsi.com

North Star Imaging Massachusetts

PHONE: (617) 600-6284

EMAIL: scanning.ma@4nsi.com

4nsi.com

North Star Imaging Europe

PHONE: +33 (0) 1 48 17 02 00

EMAIL: sales.eu@4nsi.com

4nsi.eu

North Star Imaging United Kingdom

PHONE: 07557 034195

EMAIL: sales.uk@4nsi.com

4nsi.eu

North Star Imaging China

PHONE: (86)-18516 332 893

EMAIL: sales.asia@4nsi.com

4nsi.com

NSI has representatives located throughout Europe, Asia, and many other countries.

Visit us at [4nsi.com](http://4nsi.com) or email [sales@4nsi.com](mailto:sales@4nsi.com) for more details.

Copyright © 2017 North Star Imaging, Inc. All rights reserved.

