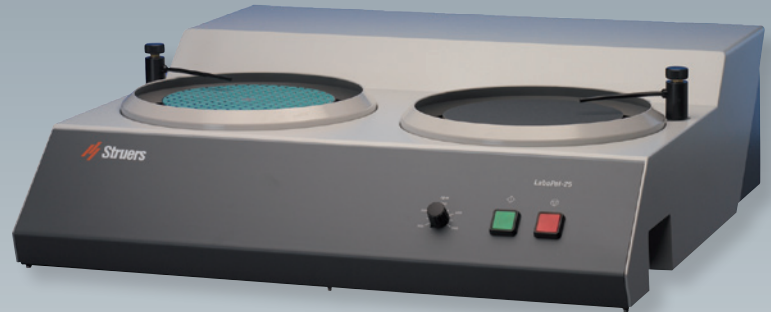


LaboPol-1, 200 mm disc



LaboPol-25, 250 mm discs



LaboPol-35, 300 mm disc



Large selection of grinding and polishing machines

The LaboPol series consists of 8 machines with different disc sizes and speed ranges, covering all possible applications.

Three system sizes

LaboPol is available in three different disc sizes: 200 mm, 250 mm and 300 mm dia.

Variable or fixed speed

With speeds from as low as 12 rpm, a maximum of 1200 rpm or fixed speeds for less demanding tasks, there is always a LaboPol for your preparation requirements.

Manual or automatic preparation

All machines in the LaboPol series can be used for manual grinding and polishing.

With a LaboForce specimen mover they can be upgraded for more automatic preparation, and with a LaboDoser also automatic dosing and timer control can be added.

Machines for grinding, lapping and polishing

User-friendly and easy operation

Quick exchange of grinding, lapping and polishing discs

Table-top design in corrosion-resistant material

Automation with the specimen movers LaboForce-1, LaboForce-3 and LaboForce-Mi

The LaboPol grinding, lapping and polishing machines are produced in many different versions:

LaboPol-1 is the single speed basic version in the LaboPol series. The 250 rpm speed is appropriate for both manual preparation and automatic fine grinding and polishing.

LaboPol-2 is the two speed version with 250 and 500 rpm. 500 rpm is used for manual plane grinding and 250 rpm for automatic fine grinding and polishing with the specimen mover LaboForce-3.

LaboPol-4: With low, variable speed of between 12-120 rpm LaboPol-4 is suited for the gentle preparation of sensitive materials.

LaboPol-5: The variable rotational speed of between 50 - 500 rpm is controlled by an electronic servo system that keeps the selected speed constant, independent of the load. LaboPol-5 is suitable for laboratories handling a wide variety of materials.

LaboPol-6: With a variable speed of between 120 - 1200 rpm, LaboPol-6 is the perfect choice when polishing with alumina. The very high speed guarantees fast material removal and short polishing times.

LaboPol-21 is a two disc, single speed machine with 250 rpm. LaboPol-21 is the successor of the well-known Knuth-Rotor which has been used in many laboratories since the Fifties. LaboPol-21 can be used for manual grinding or polishing on either disc. However, also one specimen mover can be mounted on LaboPol-21. This makes it possible to use one disc for manual preparation and the other for semi-automatic fine grinding or polishing.

LaboPol-25: When speeds other than 250 rpm are required, LaboPol-25 is ideal. It is similar to LaboPol-21, but has variable rotational speed of between 50 - 500 rpm.

LaboPol-35 also has continuously variable speed from 50 - 500 rpm. With a disc size of 300 mm dia. it is perfectly suited for the manual preparation of large specimens and, together with LaboForce-Mi for the automatic preparation of mineralogical specimens.

User-friendly and easy operation

The machines in the LaboPol series are designed to provide all the necessary functions to make them easy to operate and extremely user-friendly.

The LaboPol machines are ideal for the small volume materialographic laboratory, or in a high volume lab as supplementary equipment for preparation requirements outside the daily routine. Especially LaboPol-1, -2, -4, -5 and 6 take up little space in your lab and can be placed where it is most convenient for the operator, on standard laboratory furniture.

Quick exchange of lapping, grinding and polishing discs

The LaboPol machines can be used to fulfil all kinds of materialographic preparation requirements. They can be used for grinding, lapping and polishing with all different types of consumables. All preparation discs can be exchanged easily. Therefore, when only a moderate preparation capacity is required, all processes may be carried out with just one LaboPol and a number of discs, depending on the number and type of preparation steps required.

Since non adhesive SiC Foils can be used, only one MD-Disc is necessary for all different preparation steps, from plane grinding to final polishing.

LaboPol can be used for grinding with all the consumables available in the MD-System, with SiC Foil and for polishing with diamonds, oxide polishing suspensions OP-S, OP-U, OP-A or alumina.

Table-top design in corrosion-resistant material

The LaboPol series is produced in identical, stylish, functional, easy-to-clean cabinets of tough, corrosion-resistant material. They are equipped with a water tap and drain outlet.

Automation through specimen movers

If the number of specimens increases or if, for other reasons, the need for automation should arise, LaboPol can be automated by mounting a specimen mover, (see special brochure). With this combination, up to 3 specimens (8 on LaboForce-Mi) can be fine ground, lapped or polished simultaneously. An investment in LaboPol enables future upgrading to automation to meet the growing demands. Three different specimen movers are available.



With LaboPol/LaboForce, the operator may lap, grind or polish as required through a quick and simple exchange of discs

LaboForce-1 is the basic specimen mover, running at a speed of 8/10 rpm and the force on each individual sample can be adjusted between 2 and 20 N.

LaboForce-1 is the correct, economic choice when there are only limited requirements to the preparation time.

LaboForce-3 is a specimen mover running at a speed of 200/240 rpm. With LaboForce-3, the LaboPol becomes a versatile semi-automatic preparation system. The force on each individual sample can be adjusted between 5 and 40 N. The speed of 200/240 rpm results in a short preparation time.

Both specimen movers have a capacity of 1 - 3 specimens and are equipped with an adjustable drip lubricator.

LaboForce-Mi can be mounted on and connected to LaboPol-35, which means that it does not need a separate power connection and that it can be started and stopped together with the LaboPol-35.

LaboForce-Mi is designed for the preparation of mineralogical specimens. Grinding, lapping and polishing, all can be carried out on the same system.

With a speed of 3/4 rpm and an adjustable force between 2.5 - 20 N, LaboForce-Mi is ideally suited for the lapping and polishing of mineralogical specimens.

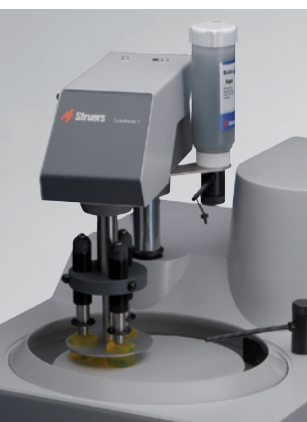
Up to 8 specimens can be prepared at the same time.

High level of reproducibility

A complete line of accessories and consumables allows the use of all the most recent preparation techniques on LaboPol which ensures that the highest specimen quality can be achieved.

Automatic dosing unit

LaboDoser can be connected to LaboPol and LaboForce, turning the LaboSystem into an automatic preparation system. Dosing of 4 different diamond suspensions, lubricants or all-in-one diamond suspensions together with a built-in timer allows running of an entire preparation step unattended. LaboDoser provides a unique opportunity to upgrade your LaboSystem and at the same time cut back on consumable costs and reduce preparation time.



LaboForce-1



LaboForce-3



LaboForce-Mi on LaboPol-35

Technical data	Cat.no.	LaboPol-1 05186327	LaboPol-2 05426327	LaboPol-4 05436327	LaboPol-5 05206327	LaboPol-6 05416327	LaboPol-21 05296327	LaboPol-25 05866327	LaboPol-35 06116327 06116416
Motor	Motor	1/3 x 200-240 V / 50-60 Hz							1/3 x 200-240 V / 50-60 Hz 1 x 100 V / 50-60 Hz
	Output	250 W		80 W	250 W				1000 W
	Speed	250 rpm	250/500 rpm	12-120 rpm	50-500 rpm	120-1200 rpm	250 rpm	50-500 rpm	
Grinding/ polishing disc	Dia	200-230 mm / 8-9"				200-250 mm / 8-10"			300 mm / 12"
	No. of discs	1				2			1
Fittings	No. of water taps	1				2			1
	Splash rings	1				2			1
Connected specimen movers	LaboForce-1	Possible		Recommended	Possible				
	LaboForce-3	Recommended		Possible	Recommended				
	LaboForce-Mi								Recommended
Accessories	Lid	05186901					05156901		05556901
Dimensions	Width	410 mm / 16.1"				700 mm / 28.6"		515 mm / 20.3"	
	Depth	670 mm / 26.4"				690 mm / 27.2"		720 mm / 28.3"	
	Height	315 mm / 12.4"				220 mm / 8.7"		315 mm / 12.4"	
	Weight	22 kg / 48.5 lbs				28 kg / 62 lbs		49 kg / 108 lbs	



Struers A/S
Pederstrupvej 84
DK-2750 Ballerup,
Denmark
Phone +45 44 600 800
Fax +45 44 600 801
struers@struers.dk
www.struers.com

AUSTRALIA & NEW ZEALAND

Struers Australia
27 Mayneview Street
Milton QLD 4064
Australia
Phone: +61 7 3512 9600
Fax: +61 7 3369 8200
info.au@struers.dk

BELGIQUE (Wallonie)

Struers S.A.S.
370, rue du Marché Rollay
F- 94507 Champigny
sur Marne Cedex
Téléphone +33 1 5509 1430
Télécopie +33 1 5509 1449
struers@struers.fr

BELGIUM (Flanders)

Struers GmbH Nederland
Elektraweg 5
3144 CB Maassluis
Telefoon: +31 (10) 599 7209
Fax: +31 (10) 5997201
netherlands@struers.de

CANADA

Struers Ltd.
7275 West Credit Avenue
Mississauga, Ontario L5N 5M9
Phone +1 905-814-8855
Fax +1 905-814-1440
info@struers.com

CHINA

Struers Ltd.
No. 1696 Zhang Heng Road
Zhang Jiang Hi-Tech Park
Shanghai 201203, P.R. China
Phone +86 (21) 6035 3900
Fax +86 (21) 6035 3999
struers@struers.cn

CZECH REPUBLIC

Struers GmbH
Organizační složka
Havičková 361
CZ-252 63 Rostoky u Prahy
Phone +420 233 312 625
Fax: +420 233 312 640
czechrepublic@struers.de

DEUTSCHLAND

Struers GmbH
Carl-Friedrich-Benz-Straße 5
D-47877 Willich
Telefon +49 (0) 2154 486-0
Fax +49 (0) 2154 486-222
verkauf@struers.de

FRANCE

Struers S.A.S.
370, rue du Marché Rollay
F-94507 Champigny
sur Marne Cedex
Téléphone +33 1 5509 1430
Télécopie +33 1 5509 1449
struers@struers.fr

IRELAND

Struers Ltd.
Unit 11 Evolution@ AMP
Whittle Way, Catcliffe
Rotherham S60 5BL
Tel: +44 0845 604 6664
Fax: +44 0845 604 6651
info@struers.co.uk

ITALY

Struers Italia
Via Monte Grappa 80/4
20020 Arese (MI)
Tel. +39-02/38236281
Fax +39-02/38236274
struers.it@struers.it

JAPAN

Marumoto Struers K.K.
Takara 3rd Building
18-6, Higashi Ueno 1-chome
Taito-ku, Tokyo 110-0015
Phone +81 3 5688 2914
Fax +81 3 5688 2927
struers@struers.co.jp

NETHERLANDS

Struers GmbH Nederland
Elektraweg 5
3144 CB Maassluis
Telefoon: +31 (10) 599 7209
Fax: +31 (10) 5997201
netherlands@struers.de

ÖSTERREICH

Struers GmbH
Zweigniederlassung Österreich
Ginzkeyplatz 10
A-5020 Salzburg
Telefon +43 662 625 711
Fax +43 662 625 711 78
austria@struers.de

POLAND

Struers Sp. z o.o.
Oddział w Polsce
ul. Jasnogórska 44
31-358 Kraków
Phone +48 12 661 20 60
Fax +48 12 626 01 46
poland@struers.de

ROMANIA

Struers GmbH
Sucursala Sibiu
Str.Scoala de Inot, nr. 18
RO-550005 Sibiu
Phone +40 269 244 558
Fax +40 269 244 559
romania@struers.de

SCHWEIZ

Struers GmbH
Zweigniederlassung Schweiz
Weissenbrunnenstraße 41
CH-8903 Birmensdorf
Telefon +41 44 777 63 07
Fax +41 44 777 63 09
switzerland@struers.de

SINGAPORE

Struers Singapore
627A Aljunied Road,
#07-08 BizTech Centre
Singapore 389842
Phone +65 6299 2268
Fax +65 6299 2661
struers.sg@struers.dk

SUOMI

Struers Suomi
Kalevankatu 43
00180 Helsinki
Puhelin +358 (0)207 919 430
Faksi +358 (0)207 919 431
finland@struers.fi

SWEDEN

Struers Sverige
Ekbacksvägen 22
168 69 Bromma
Telefon +46 (0)8 447 53 90
Telefax +46 (0)8 447 53 99
info@struers.se

UNITED KINGDOM

Struers Ltd.
Unit 11 Evolution @ AMP
Whittle Way, Catcliffe
Rotherham S60 5BL
Tel: +44 0845 604 6664
Fax: +44 0845 604 6651
info@struers.co.uk

USA

Struers Inc.
24766 Detroit Road
Westlake, OH 44145-1598
Phone +1 440 871 0071
Fax +1 440 871 8188
info@struers.com

Struers' equipment is in conformity with the provisions of the applicable International Directives and their appurtenant Standards. (Please contact your local supplier for details)

Struers' products are subject to constant product development.

Therefore, we reserve the right to introduce changes in our products without notice.