



Mamautari Newsletter

MFMRD Bairiki, Tarawa P.O Box 64 Phone no: 21099 Fax no: 21120

Volume 1 issue 4. 29 July 2009

Kanoan am Beeba iteranibaa

<i>Kiribati-Tuvalu Bilateral Fishing Agreement.</i>	1
<i>Fisheries, Li- censing and En- forcement Unit News.</i>	2
<i>Fisheries Divi- sion</i>	3
<i>Planning News</i>	4
<i>Mineral Unit</i>	5
Ana kainaomata Na- beina	6

Rongorongo aika Kimototo:

Katanoata ibukin te tagging..... 2

Ana komete MFMRD Open Day
ao Kaongoraa man te aobiti..... 3

ECO FARM & Auti ni Kamwai-
toro 4

Students Informations..... 5

Management Option Workshop..6

KIRIBATI-TUVALU BILATERAL FISHING AGREEMENT



Hon Taberannang Timeon, te Minita n te Botaki n Akawa ao Karikirakean Kaubwaira mai Marawa n raonaki iroun Peter Tong, ni maroroia ma ana Prime Minister Tuvalu n ana lounge Otintaai Hotel.

N te bong ae te kauabong 14th Tuurai 2009 ao e karaoaki te maroro I marenan te Minita man te Botaki n Akawa ao Karikirakean Kaubwaira mai Marawa ae Taberannang Timeon ao ana Prime Minister Tuvalu ae Apisai Ielemia n te Otintaai Outero.

Oin te maroro aio bon ongoraeakinan ana bubuti te tautaeka n Tuvalu iaon kariaiakan tewaana ana kaibuke ni karaun n akawa inanon marawan Kiribati.

Te babaire iaon aio e mena inanon bain te Botaki n Akawa imwain ae kanakoa ana kariaia Kaebineti iaona.

Man Te FLEU

Te ibuokanibwai ni karikirake iaon Kaibuke Ni karaun imarenan te Tautaeka Ni Kiribati ma Te kambwana n Akawa mai Taiwan ae Fong Kuo Fishing Company.

Iai te kantaninga bwa ena tauraoi teuana ana karikirake te Botaki n Akawa iaon te ibuokanibwai ni karikirake iaon tewaana te kaibuke ni karaun are ena karaoia ma te kambana mai Taiwan ae Fong Kuo Fishing Company.

Ibukin aio ao ea tia naba ni karaoaki te maroro ibukin karaoan te karikirake aio imarenan te Minita man te Botaki n Akawa ao Karikirakean Kaubwaira mai Marawa ao ana tia tei te kambwana n akawa aio n ana lounge te Otintaai Hotel n te moanibong ae 13 iai bongin Tuurai 2009 imarenan te aoa 2 ao te aoa 4 n te bwakantaai.

N te maroro aio ao a bon rinanoi ana babaire te Kaebineti ibukin kateakin te karikirake are ena karaoaki iaon kaibuke ni karaun are ana waakinna rabwata aika uoua aikai.

Mai mwiin te maroro ao aikai bwaai aika a tia n rinanoki:

- Aron tein te tibatiba iaon te aro ni bwaibwai nte kambana ae 51% ana bwai Te Tautaeka n Kiribati ao 49% tibwan Fong Kuo..
- Kabuburaan tibwangan te Tautaeka ni Kiribati ibukin kabutakin te karikirake aio man te mwaiti ae \$10 mwanen Amerika n teuana te metric ton nakon te mwaiti ae \$12 mwanen Amerika

n teuana te metric ton. Aio are ena ikotaki nakon te mwaiti are 51%.

- Kateakin te kambwana ni karikirake aio n te tai ae waekoa ena moa man te tai are kaota iai nanona te tautaeka ni Kiribati bwa ea tauraoi ao mani kona ni waakina te karikirake nakon te rabwata ae te Western and Central Pacific Commission (WCPFC) ao man tia naba ni kabwakaa tibwangan ae US \$12.165 million.

- Ena riai moa ni kabutaki tii tewaana te kaibuke ao man noraki aron ana kakamwakuri inanon teuana te ririki. Ngkana e taraaki bwa enakoraio ao ena manga karekeaki te kauowaa ao te kateniwaa n ririki ake imwiina ma te kantaninga bwa ena reke te ka-awaa inanon te ririki 2012.

A kantaningaaki kaimoana ke taan mwakuri iaona bwa I-Kiribati ma tii taian aobitia ake ana roko mai Taiwan ibukin te moan ririki.

KANUANGA

I BUKIN TE DART TAEKI TE DART TAEKI AE BABOBO
\$10 US
ANAN TE IKA MAI TADOK UOUA NAKON NOKAN BUKITOUA (cm)

I BUKIN TE ACOUSTIC TAEKI TE DART TAEKI AE MIBIN
\$50 US
ACOUSTIC TAG INSERTED

I BUKIN TE ARCHIVAL TAEKI TE DART TAEKI AE AORANTI
\$250 US
IAI TE ARCHIVAL TAEKI N AORANTI TE IKA
KI NA KONA N NOKA TE AORANTI

1. Ingimea ma ati ake a kanikinaeaki n te babobo e na bon akea riki kanikina tabeua irarikina ma e kona ni iai riki te kauoua ae bon aekan naba anne ni iteran nukana are teuana

2. Te kanikina ae kirin e bon kaotia ba bon iai te aekaki n taeki teuana inanon birotana

3. Ingimea ma ati ake a kanikinaeaki n te kanikina ae e aoranti e boni kaotia ba bon iai naba te aekaki n taeki teuana ae kaokoro riki inanon naba birotana.

Reitaki ma te Fisheries Licensing, Enforcement Unit ibukin rongorongona ae bwanin ke tareboon nakon 21099 ibukin bwaninin rongorongona.



E karaoa ana moan Bowii ana komete MFMRD ibukin ana Open Day n te kauabong 27/07/09 n ana tabo te Fisheries I Tanaea.

Kaongoraa tabeua man te aobiti

E karairaki ni wiiki aika nako temanna te aobitia are kamwanangaaki man te Mechanical Unit nakon te abamakoro ae Arorae ibukin karaoan te uruaki are riki nakon te tianaraita are kamaiua te auti ni kamwaitoro n te abamakoro aio.

N ana rongorongona te aobitia aio ao e taekinna bwa irarikin te uruaki nakon te tianaraita ao bon iai naba te kanganga are e riki nakon te mitiini ni karao aiti buraoiki inanon naba te auti ni kamwaitoro aio. Aio are ea kona ni karika uareken mwaitin te aiti are ena otinako ni katoa bong.

Man te kanganga aio ao e roota naba aron aia kareke mwane taan akawa n te abamakoro aio ibukin karinan aia ika ni katoa bong.

E ngae n anne ao e reitia n taku te aobitia aio bwa a tia ngkai ni karaoaki ao man taobaraeaki kanganga aikai imwiin mwakuriaia ma te aobitia aio. Irarikin anne ao e bon reke ana tai ni karaoa te kataneiaai nakon teure e tabe ma bwaai aikai iaon te abamakoro anne bwa eaonga ni uare-reke aron te kanganga ae noraki ngkai.

Man Te Fisheries Division

Aki teke nanon te taakete

N te kaabong te week ae nako ao a karaoa mwanangaia kain te Hatchery Unit mai Tanaea nakon te Abamakoro ae Abaiang. Oin te mwananga aio bon tuoakin ke noran maiuraoin taian kereboki ake a kabwakaaki inanon naman Abaiang inanon Maati te ririki aio.

N aron rongorongona ao e kananokawaki bwa eaki teke nanon te taakete are a mwananga iai kain te tiim aio iaan te kanganga ni mwaitin aia gas ake a uotii. Te bwai ae riki e bon aki tau mwaitin te gas are e uotaki bwa ti uoua ni kabotauaki ma ana buburan te tabo are ana

karaoa iai aia kataratara.

E ngae n anne ao n okiia kain te tiim man te abamakoro aio ao a bon reke naba uotaia n oki taian were ao taian bun ake a kantaningaaki ba ana karaoa aia mwakuri iaioia. Ibukin taian were ana bon karaoa te kaabong iaona n te aro are a na manga kona ni uotaki nakon taabo tabeua n ai aron ae a karaoia nakon taian kereboki.

Iai te katautau bwa taian bun ake a uotaki ana tauraoi ni kabwakaaki inanon naman Tarawa I eta.



Tamneina mai tinanikuna



Tamnein nanon te Multi purpose room.

Kakamwakuri n aobitin te Botaki n Akawa are I Tanaea

N tamnei aika I eta aikai ao bon rabwatan teuana te aobiti I Tanaea are e wakinaki te mwakuri n onobwai ao ni katamaroa nako iai ibukin kabonganakina n itera aika mwaiti.

E taekinaki bwa aio teuana te ruu are ena bon kamanenaaki irouia taan mwakuri mai Tanaea ibukin karaoan tabeua aika kakaokoro. Ma e ngae n anne ao ena kona n riki te aobiti aio ba kanga te tabo are ena kona ni karaoaki iai te angareirei n te tai are e kainanoaki iai ke ena kona naba n riki bwa te tabo ni workshop ao a mwaiti riki.

Irarikin aikai ao e aranaki te aobiti aio bwa te Multi-Purpose room ao tiaki tii ngaia ma aio are ena bon rang ibuobuoki ibukin aron noran aia kakamwakuri kain te aobiti mai Tanaea.

Rongorongo *Man Te Planning Unit*

\$29,400,000 Yen ke US\$ 300,000.00 te mwaiti ni mwane ibukin boon bwain nanon auti ni kamwaitoro ake I Tabiteuea Meang ao Tabiteuea Maiaki.



Te moan tia Koroboki man te Botaki n Akawa ao Karikirakean Kaubwaira mai Marawa, Ribanataake Awira ngke e tiaina ma temanna man te Mission of Overseas Fishery Cooperation Foundation of Japan.

Iai te mwaiti ni mwane ae mwaitina \$29,400,000 Yen ke US\$300,000.00 are e tiainaaki beebana iroun te moan tia Koroboki man te Botaki n Akawa ao Karikirakean Kaubwaira mai Marawa ao ana aomata te kambwana mai Tiabaan ae te Mission of Overseas Fishery Cooperation Foundation of Japan.

Te mwane aio are ena bon kabonganaaki ibukin boon bwain nanon nako taian auti ni kamwaitoro ake a kateaki I Tabiteuea Meang ao Tabiteuea Maiaki.

Aio te karikirake are boutokaaki ao man mwanenaki iroun te kambwana teuana mai Tiaban ae te Mission of Overseas Fishery

Cooperation Foundation of Japan ke MOFCFJ are kinaki ngkai bwa OFCF.

Ake a tiaainaa beeba aio bon te moan tia koroboki n te Botaki n Akawa ae Ribanataake Awira ma ana kauatobo mai Tiaban ae Fujita man te MOFCFJ.

E karaoaki te tiaina n te katenibong 7 th July 2009 n ana aobiti te moan tia koroboki n te headquarter I Bairiki. Noora tamneina I eta.

Kan roko n tokina te mwakuri

Iaoni kawaina n tebenako ao n tokanikai aron te mwakuri iaon te auti ni kamwaitoro are e karaoaki n te tabo ae Buariki ibukin Tarawa I eta.

E taekinaki bwa ai bon tii mwakuri ni katamaroa aika uarereke ake a kainanoaki ibukin katiaan raoi te auti ni kamwaitoro aio ao are e kantaningaki nakon moan te namwakaina aio.

Irarikin anne ao te mwakuri iaon auti ni kamwaitoro ake I Tabiteuea Meang ao Tabiteuea Maiaki ae bon waakinako naba. Iai te kantaninga bwa ena bobonga te mwakuri iaomia inanon naba te ririki aio.

ECO FARM

E kukurei ni katanoata ECO FARM bwa a tauraoi ngkai ni kabonakoaki mai irouna bwaai n aron aikai:

Bwaai aika kabonakoaki	Tein booia
Smoke fish	\$9.00/kg
Fresh Egg	\$0.50c each
Fresh milk fish	\$3.00/kg
Firewood	\$10.00/truck
Tano	\$22.00/ truck (2 ton)
Fingerlings (tawaa)	\$0.10 each

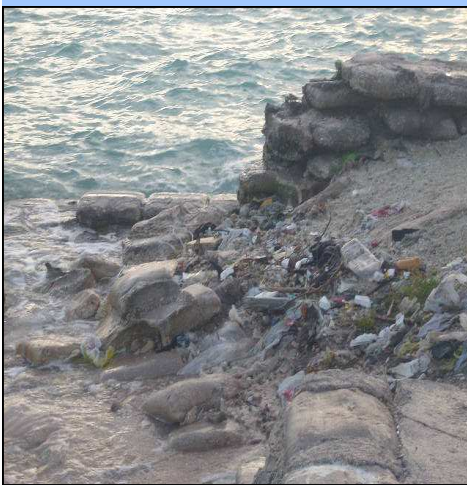
Ibukin rongorongona ae bwain ao reitaki ma ngaira iaon te namba ae 28212.

Mineral Unit

Student's Help Center:

Ko kainanoa buokam n am bwai n reirei iaon baikai inano aikai? Reitaki ma te Mineral Unit ibukin buokam iaon te tareboon namba ae 21099, extn 120.

- Te kai rootaki imataniwiin te aba (Coastal Erosion)
- Bwaai ake a kona ni karekea te kanganga nakon mataniwiin te aba (Factors contributing to Coastal issues)
- Aanga n totoko nakon te kanganga ae te kai rootaki imataniwiin te aba (Ways for minimizing/ preveting coastal issues)



Need Mamautari Newsletter
Delivered to your email!

Drop us an email at:

subscribe@mfmrd.gov.ki

OR

call (00686)21099

©MFMRD

BIBITAKIN KANOAN TE BONG, EL NINO AO MWAINGINGIN TE TANO MAI MATANIWIIN TE ABA



Kaain te tiim nako Mwaiana

Teuana mai buakon bwaai ake iai rekerakeia ma aron mwaingingin te tano bon te bwai ae ataaki bwa te El Nino Southern Oscillation ke ENSO.

Mwaingingiin te tano e irira aron butin te aira are e uouotaki ni butin ke kawain te ang are e noraki n angiin te tai bwa e nanako mai maiaki mainiku ni wairio (Southern Easterly prevailing wind). N te tai are e kaoti ke n reke iai te bwai ae e aranaki bwa te ELNino ao ena uringaki bwa butin te ang are e kairiira butin te aira ma te tano ena bon rootaki n te aro are ena bure butina ao mai ikanne are e kona n roota aron butin te tano n roko I mataniwiin te aba.

Mai ikai are e kona ni karika naba te kanganga nakon mataniwiin te aba. N reitaki ma aio ao a mena ngkai iaon Kiribati temanna te tia rabakau man te kuura ae rietata ae te Kansas University n raonaki iroun temanna ataecin te kuura aio ibukin karaoan aia kaakaae ni irekereke ma bibitakin mataniwiin te aba are e katautauaki bwa iai rekerakeia ma te bwai ae aranaki bwa te EL Nino ke ENSO (EL Nino Southern

Oscillation).

Oin rokoaia naakai bon kakaeen koauan te kantaninga are te bibitaki ni kanoan te bong ni irekereke ma te bwai ae te EL Nino e kona n roota mwaingingin te tano mai mataniwiin te aba.

A kantaningaaki bwa ana kabanea e kaan teuana te namwakaina n tiku iaon Kiribati ao man karoko n abamakoron Kiribati aika Maiana, Aranuka ao Beru n te itera Maiaki. Ana bon raonaki naba naakai iroun temanna te aobitia man te Mineral Unit ao ai temanna man te Environment.

N te tai aio ao e mena ngkai rabwatan te tiim iaon te abamakoro ae Maiana ike e katautauaki bwa ana kabanea teuana te wiiki iai. N okiia ao ana manga kaea te abamakoro ae Aranuka ike ana kabanea naba teuana te wiiki iai ao imwina a kawara naba Beru n te itera maiaki.

Ana ka-20th ni kainaomata Nabeina



Kanuringaan te Inaomata bon kanuringan te maeu ae teimatoa, ao e teimatoa ibukina b'a e teimatoa te rau ao te mweraoi inanon ara kaawa nako, ara abamakoro aika kakaokoro n reitaki ma Kiribati ae bwanin. E reitia man taku bwa "te rau ma te mweraoi kanga ai aron te tano ae tamaroa are e kainnaoia te aroka bwa ena bwebwerake man kairikiua aika raoiroi mani bongana ibukin maeura n te bong teuana ma teuana."

Aikai tabeua ibuakon ana taeka te Minita man te Botaki n Akawa ao Karikirakean Kaubwaira mai Marawa ake e taekinii nakoia kain Nabeina ni kauringaan ana ka-20th ni inaomata Tarawa

teinaieta are a karaoia kaain Nabeina n te kaonobong 25th July 2009.

E waakinaki kanoan te bong anne ma te nebonebo iaan te kainiman, ao n rimwiaki ni kanoan te mwaneaba ao ai takakaron nako tinaniku n aron te nete, te butibooro, te kaunrabwata ao a bati riki.

E bwaranako kanoan te bong anne ngke e boo aua n te bwakan taai ao e okirikaaki ana tiim te Minita n te bwakantaai naba anne.

EVENTS: Management Option Workshop.

The management option workshop commonly known as MOW was first initiated in 2005. The main objective of this workshop is for FFA Secretariat to brief its members on issues relating to the Tuna Commission and to consolidate members' positions relating to areas of interest that they wish to pursue at the Scientific Committee (SC), Technical Compliance Committee (TCC) and the Western and Central Pacific Fisheries Committee (WCPFC) 6th meetings.

At this management workshop there were 8 priority areas that the WCPFC5 identified that will be discussed and finalized at the WCPFC6 in French Polynesia this December. The 8 priority areas include the following;

1. The Commission Regional Observer Program (ROP)
2. The Commission Vessel Monitoring System (VMS)
3. The Completion of MCS Data Rules
4. Review of IUU procedures
5. Transshipment Measure/Non-CCM Carriers/Bunkders
6. Development of a proposal for control of nationals
7. Development of process for monitoring compliance
8. Charter Arrangement

The workshop was held in Nadi, Fiji from the 13th-17th July 2009. It comprises of all FFA Member Countries.

Funding sources for this workshop were provided from the New Zealand and Australian Governments.